

# Garbage and Recycling System Facilities Plan

Project Overview  
WA County GRAC, June 8, 2023



# Purpose of Meeting

1. Introduce the System Facilities Plan project
2. Provide an overview of what we have learned so far
3. Highlight learnings specifically related to WA County
4. Offer ways to contribute and track project



# Regional Waste Plan strategic priorities



Foster inclusive prosperity and workforce equity



Reduce impacts of products and trash and advance environmental



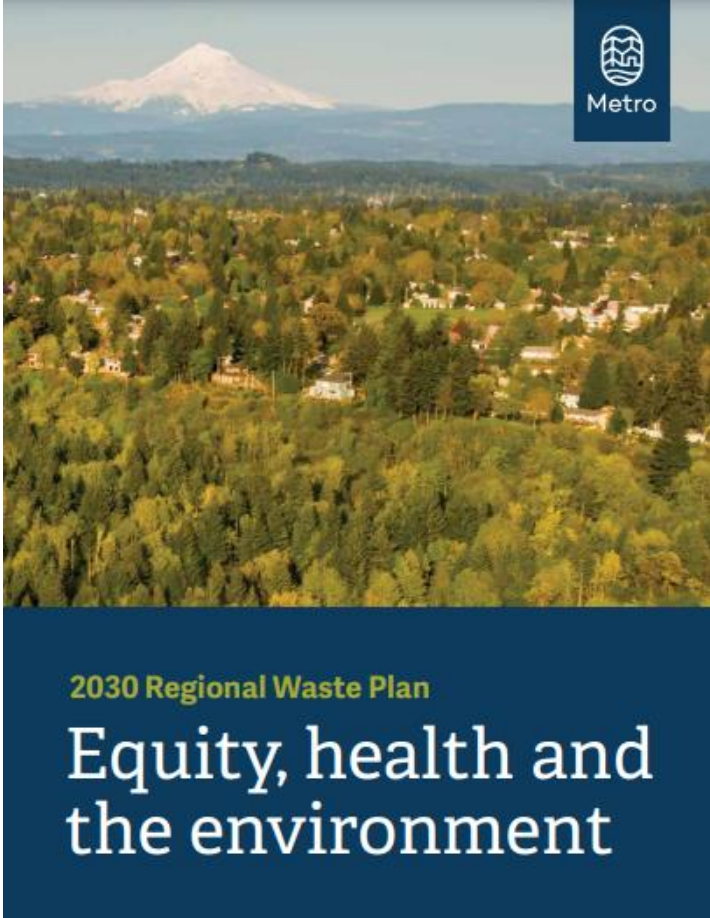
Strengthen systems for recovery of recyclables, food scraps and yard



Provide excellent service and equitable system access

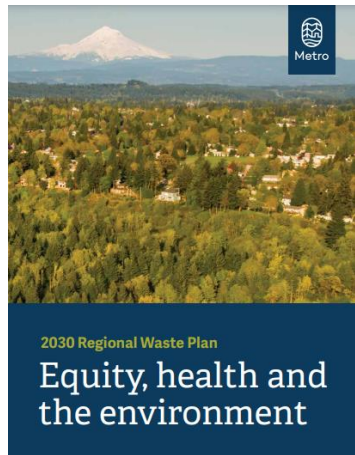


Prepare for emergencies and garbage and recycling system

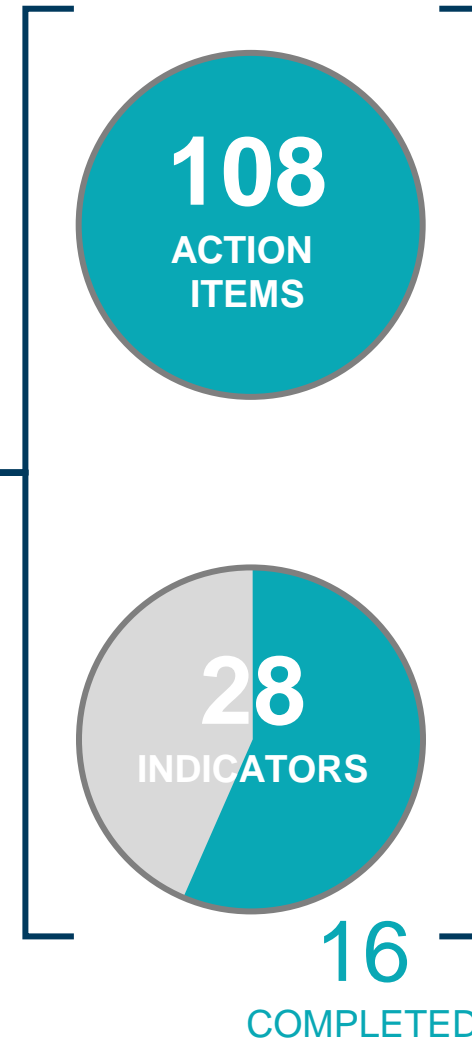
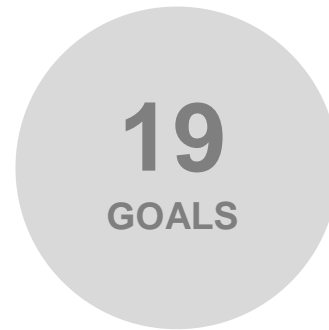




# What does the progress report cover?



Regional Waste Plan



Annual  
Progress Report

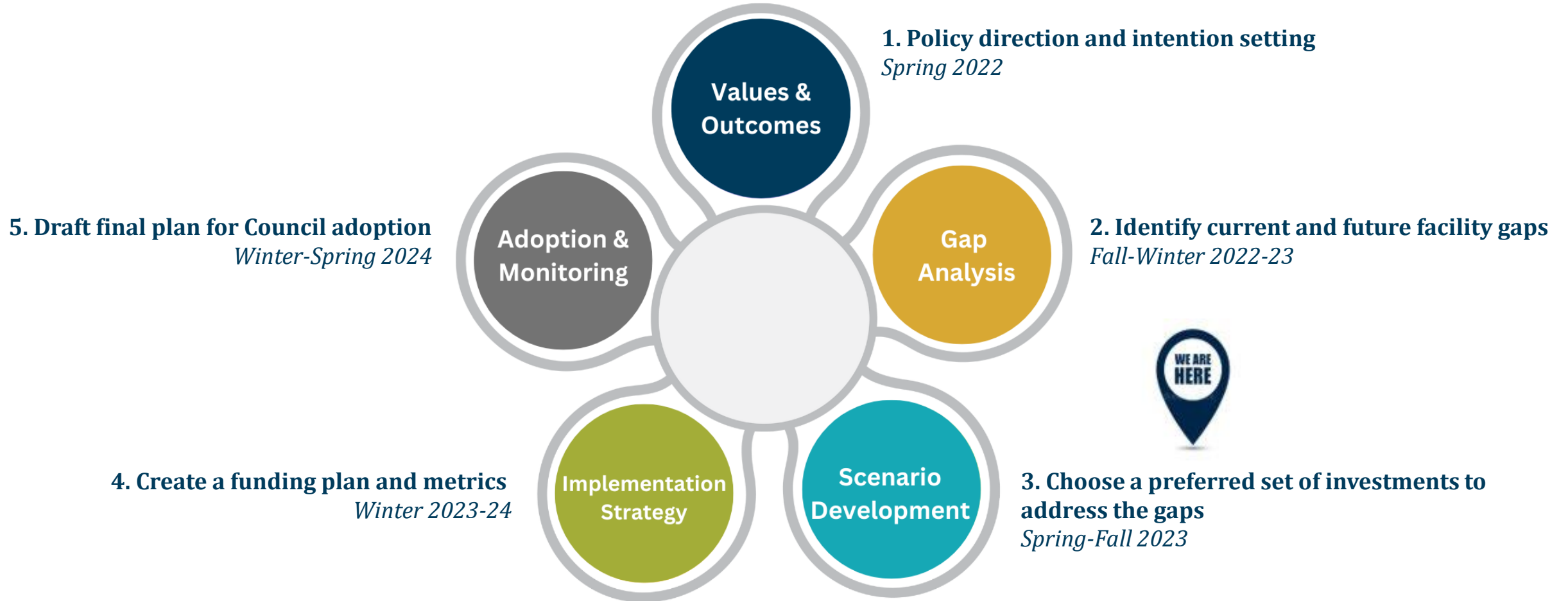
# System Facilities Plan

## Regional Waste Plan Goal 16

Maintain a system of facilities, from smaller recycling drop-off depots to larger full-service stations, to ensure equitable distribution of and access to services.



# Project Overview



# Phase 1: Project Values & Outcomes



Healthy people and environment



Resource conservation



Environmental literacy



Economic well-being



Excellent service; equitable system access



Operational resilience



Community restoration



Community partnerships



Community investment



Tribal consultation

Values &  
Outcomes



# Phase 2: What We Did



## Engaged stakeholders



Metro Facility and Committee Engagements



## Analyzed input

Most common facility gaps:

1. More places to take residential self-haul waste
2. More locations to drop-off large household items
3. More places to take hard-to-recycle items
4. Improved services and amenities at transfer facilities
5. More household hazardous waste facilities
6. Flexible (warehouse) spaces for reuse and repair

Gap Analysis





# Community Advisory Group Tour/Video



[Link to view video](#)



# Phase 3: Technical Analysis

## Current State

- What facilities exist today?
- How much is being recycled, composted or reused compared to landfilled?
- How long does it take to drive to existing facilities?

## Needed Facilities

- What facilities are needed to reduce the demand for garbage services and focus on more reuse, repair and recycling?

## Priority Materials

- What materials should Metro focus on for infrastructure investments?









Gap  
Analysis

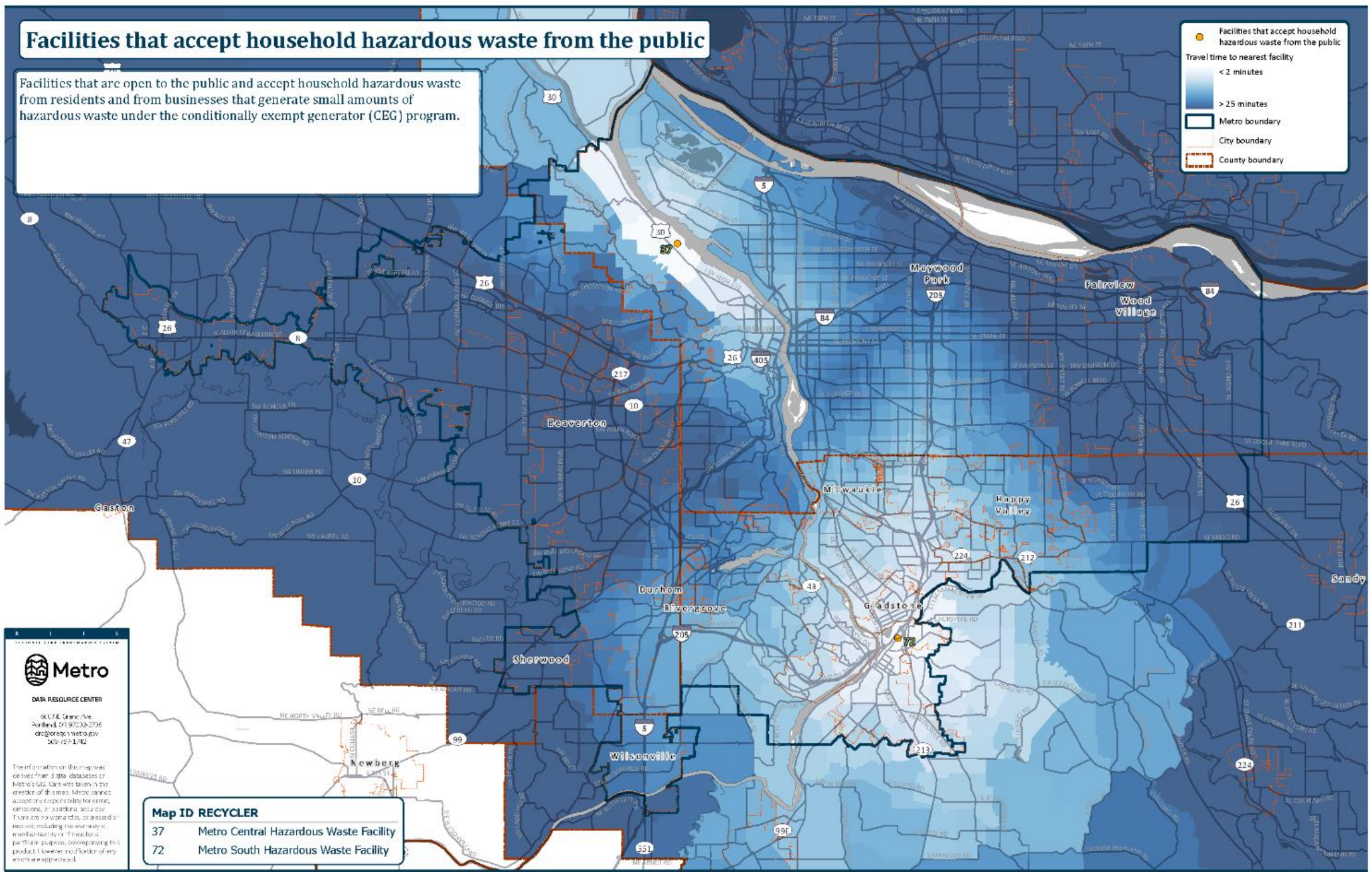




# Facilities that accept household hazardous waste from the public

Facilities that are open to the public and accept household hazardous waste from residents and from businesses that generate small amounts of hazardous waste under the conditionally exempt generator (CEG) program.

 Facilities that accept household hazardous waste from the public  
 Travel time to nearest facility  
 < 2 minutes  
 > 25 minutes  
 Metro boundary  
 City boundary  
 County boundary



  
**Metro**  
 DATA RESOURCE CENTER  
 900 NE Grand Ave  
 Portland, OR 97232-2726  
 org@metro.gov  
 503-941-1432  
 The information on this map was derived from digital databases of Metro's GIS. It was taken in the creation of this map. Metro cannot accept any responsibility for errors, omissions, or outdated accuracy. There are no warranties, expressed or implied, including the warranty of merchantability. This is for a particular purpose, so comparing this product to other products of any other is appreciated.

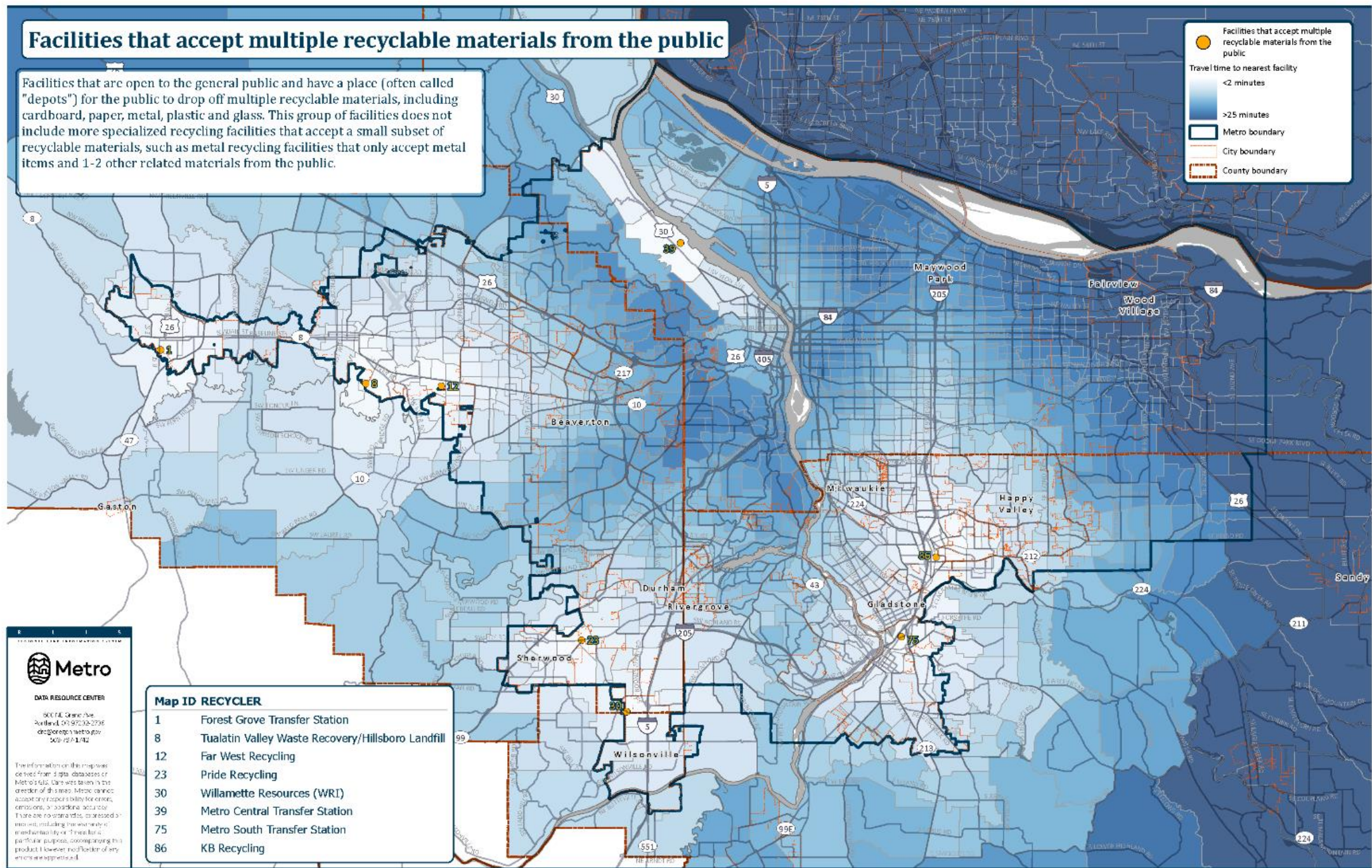
**Map ID RECYCLER**  
 37 Metro Central Hazardous Waste Facility  
 72 Metro South Hazardous Waste Facility



# Facilities that accept multiple recyclable materials from the public

Facilities that are open to the general public and have a place (often called "depots") for the public to drop off multiple recyclable materials, including cardboard, paper, metal, plastic and glass. This group of facilities does not include more specialized recycling facilities that accept a small subset of recyclable materials, such as metal recycling facilities that only accept metal items and 1-2 other related materials from the public.

● Facilities that accept multiple recyclable materials from the public  
 Travel time to nearest facility  
 <2 minutes  
 >25 minutes  
 Metro boundary  
 City boundary  
 County boundary



**Metro**  
 DATA RESOURCE CENTER  
 800 NE Grand Ave.  
 Portland, OR 97232-2798  
 dr@oregonmetro.gov  
 503-754-1742  
The information on this map was derived from digital databases or Metro's files. Data was taken in the order of this map. Metro cannot accept any responsibility for errors, omissions, or positional inaccuracies. There are no warranties, expressed or implied, including the accuracy, completeness, or timeliness of the information. This product is provided "as is" without any warranty of any kind, expressed or implied.

**Map ID RECYCLER**

1	Forest Grove Transfer Station
8	Tualatin Valley Waste Recovery/Hillsboro Landfill
12	Far West Recycling
23	Pride Recycling
30	Willamette Resources (WRI)
39	Metro Central Transfer Station
75	Metro South Transfer Station
86	KB Recycling



# Phase 3: Develop Scenarios

## What is scenario planning?

A practice through which communities plan for an uncertain future by exploring multiple possibilities of what might happen.

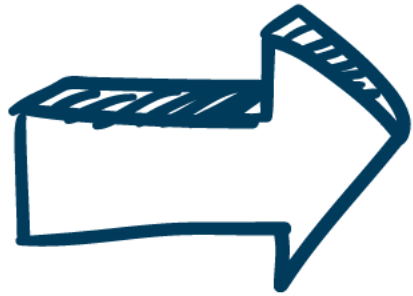
- Assists communities in thinking in advance about the many ways the future could unfold.
- Supports decision-making about projects, policies and investments.
- Provides a framework for talking about potential future outcomes.



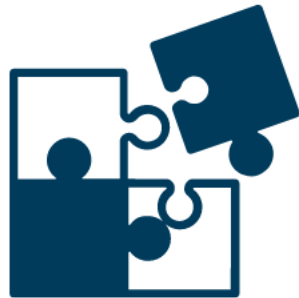


# What is the scenario planning process?

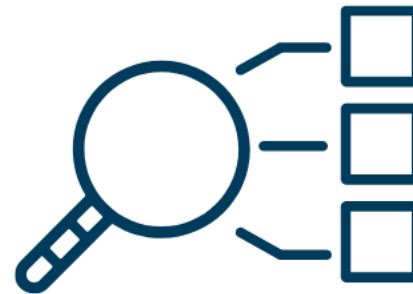
**1. Identify Values & Outcomes**



**2. Identify System Gaps**



**3. Develop Plausible Scenarios**

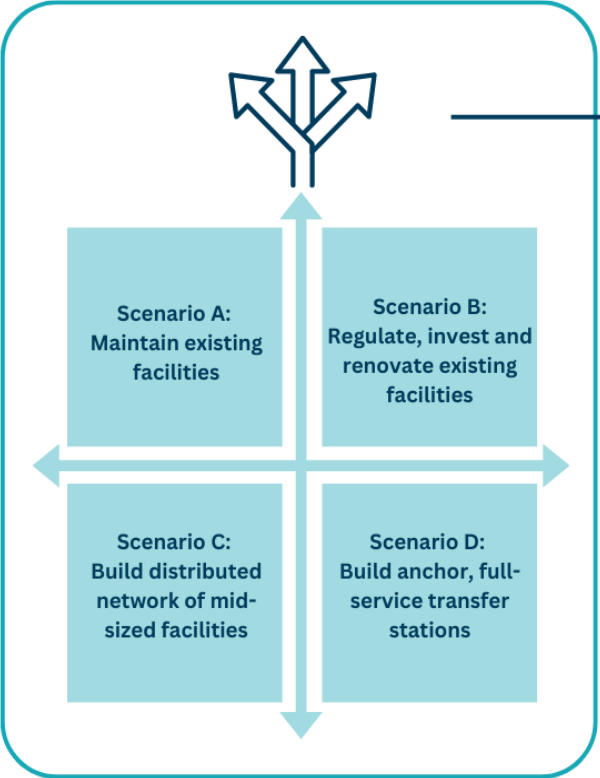


**4. Assess and Discuss Implications & Paths**



# Draft Scenario Approach

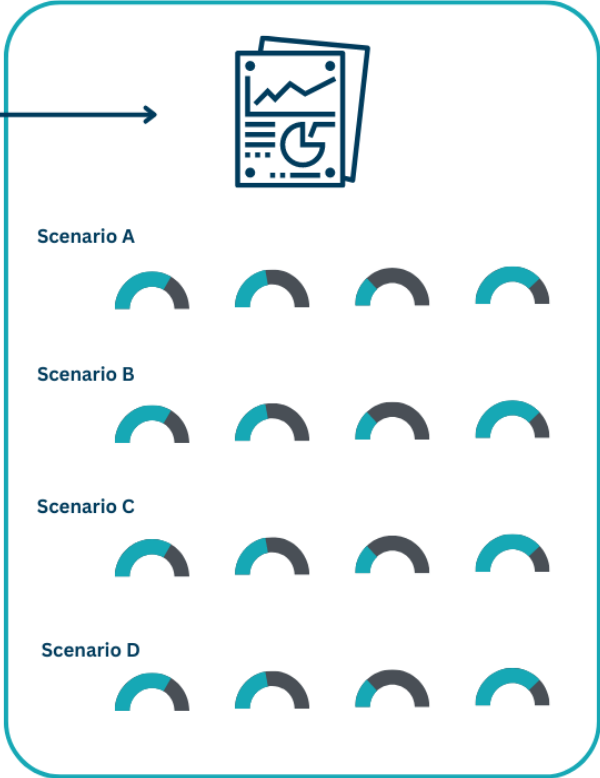
## Develop Possible Scenarios



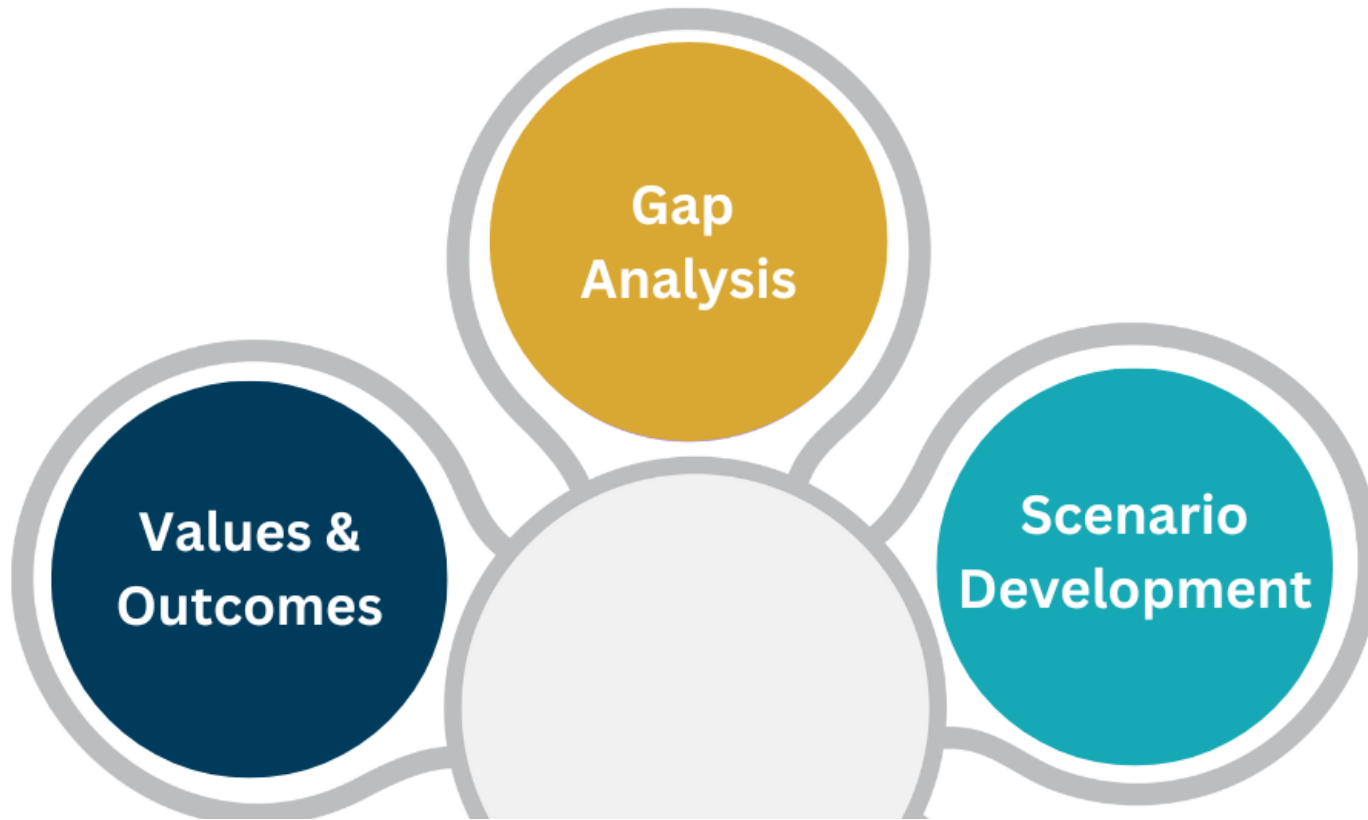
## Build Out Key Information



## Evaluate Based on Criteria



# What's Next: Phase 3



**Phase 3: Choose a preferred set of investments to address the gaps**

*Spring-Fall 2023*

- Develop draft scenarios
- Engage stakeholders (Sept)
- Continue Tribal Engagement
- Seek decision by Metro Council (Nov)



# Project Contact Information

**Project website:** [oregonmetro.gov/systemfacilitiesplan](http://oregonmetro.gov/systemfacilitiesplan)

**Project manager:** [estee.segal@oregonmetro.gov](mailto:estee.segal@oregonmetro.gov)

thank you

