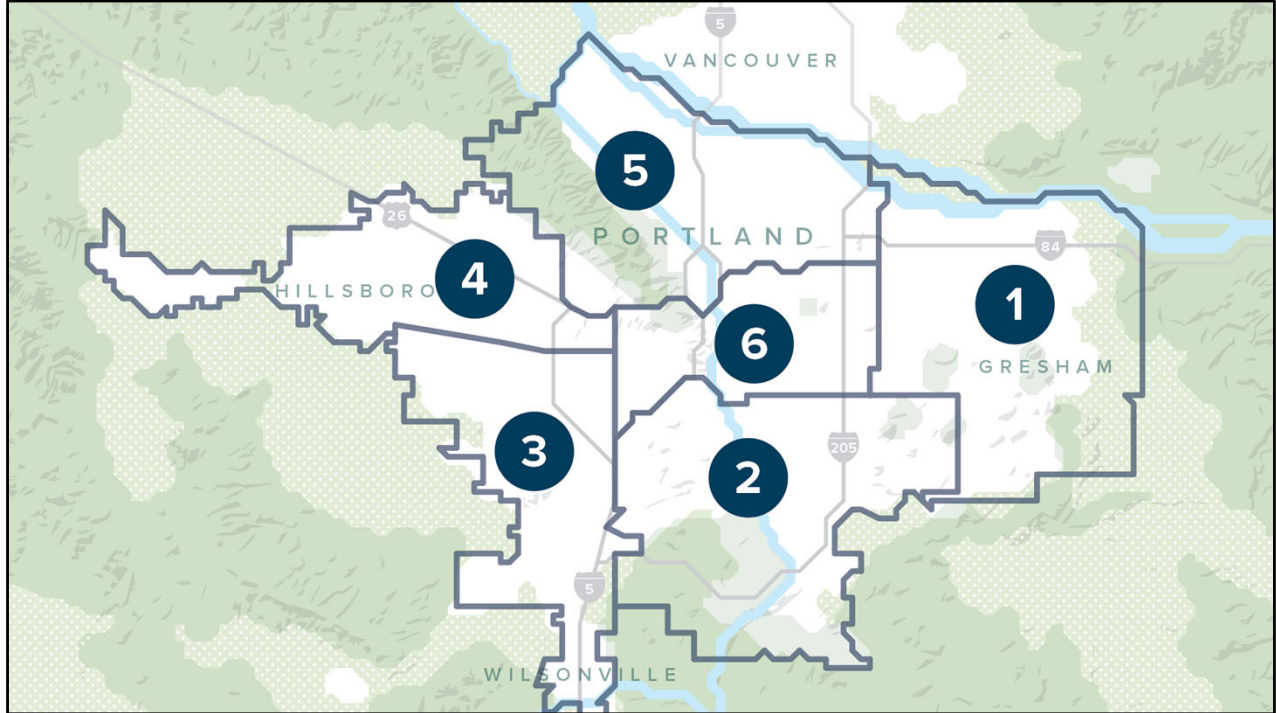




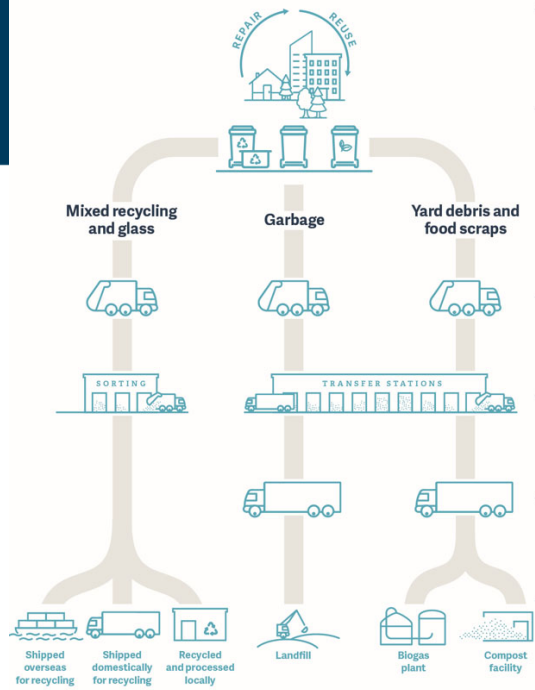
Garbage and Recycling System Overview
Garbage and Recycling Advisory Committee
January 12, 2023



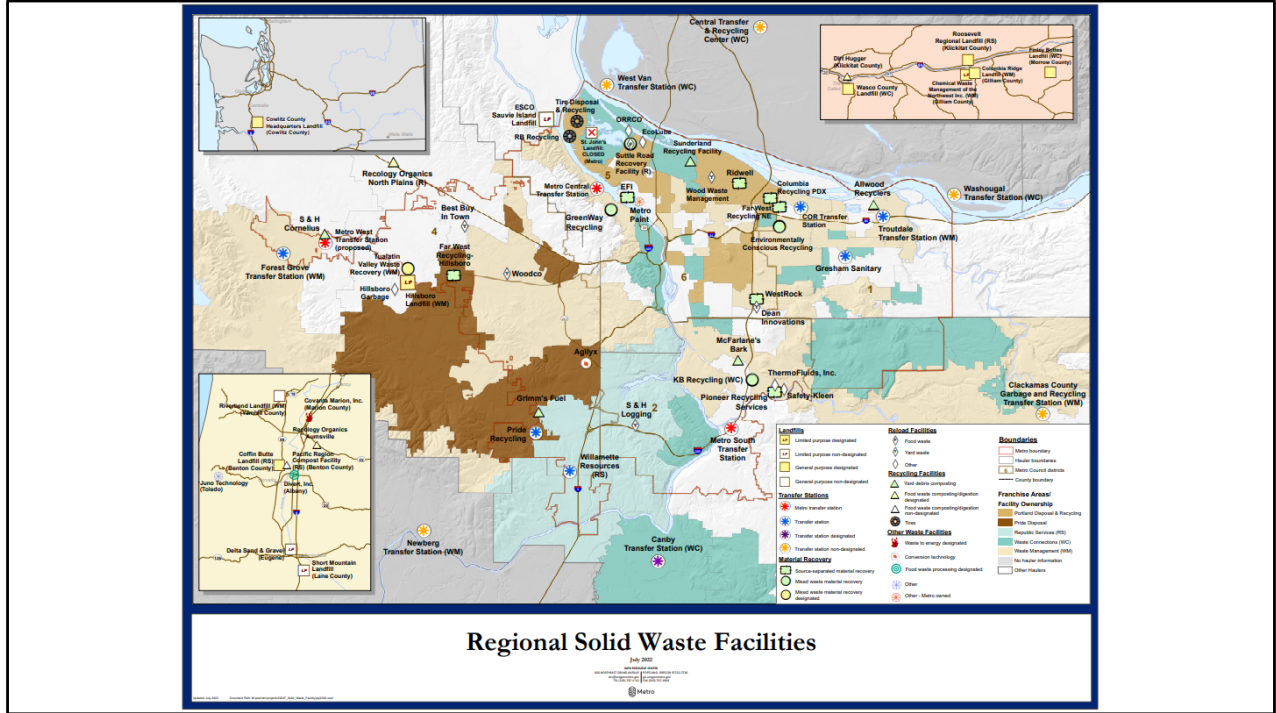
Metro serves more than 1.5 million people in Clackamas, Multnomah and Washington counties. The agency's boundary encompasses Portland, Oregon and 23 other cities – from the Columbia River in the north to the bend of the Willamette River near Wilsonville, and from the foothills of the Coast Range near Forest Grove to the banks of the Sandy River at Troutdale.

- Metro Council President Lynn Peterson
- District 1: Councilor Ashton Simpson
- District 2: Christine Lewis
- District 3: Gerritt Rosenthal
- District 4: Councilor Juan Carlos González**
- District 5: Mary Nolan
- District 6: Duncan Hwang

System Snapshot

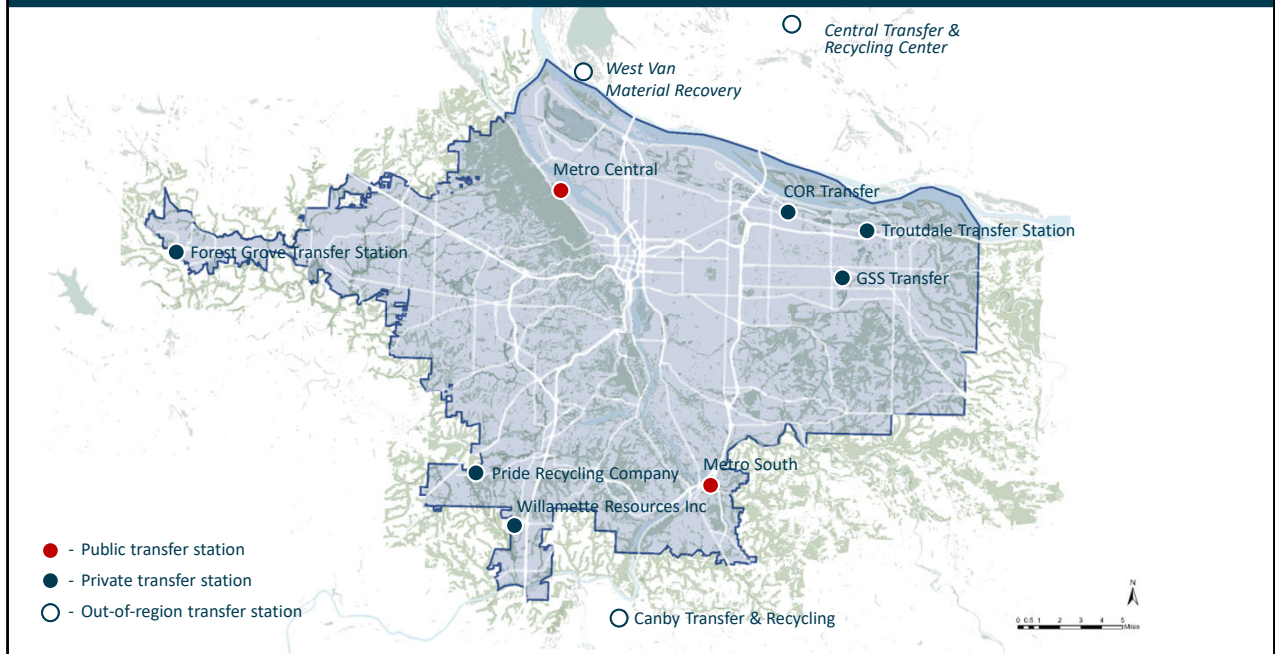


Metro is responsible for the planning, management and oversight of the regional solid waste system. Metro is also responsible for assuring waste and recyclables are managed in an appropriate way and at properly authorized facilities through a system of licenses, franchises and agreements designed to protect the environment, ensure public health and welfare, and mitigate nuisance conditions.



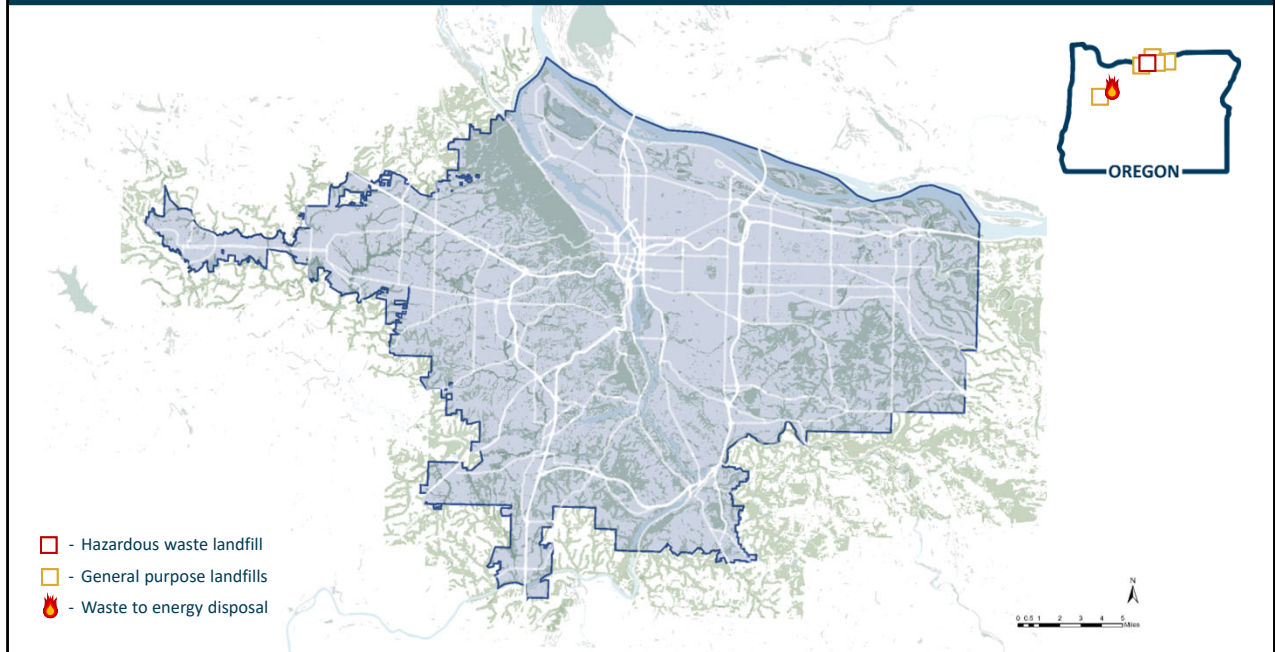
To view the most current map visit: www.oregonmetro.gov/solid-waste-facilities-map

Regional Solid Waste System – Putrescible waste transfer stations



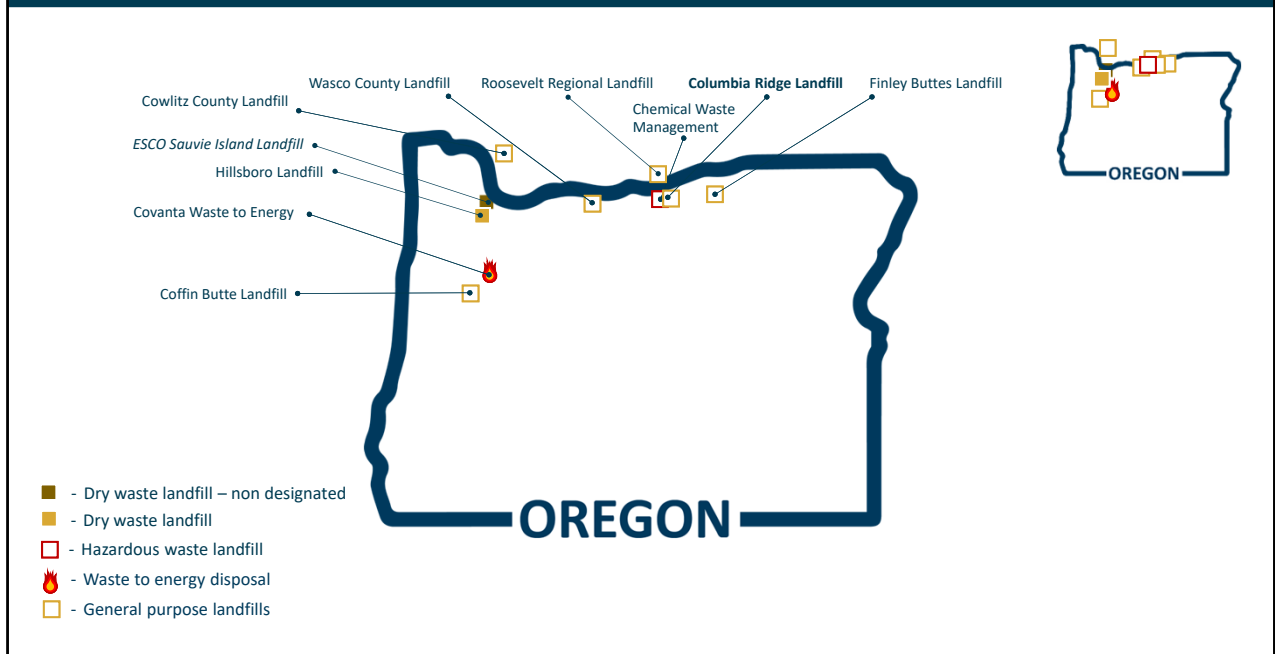
Note: the maps in this presentation are a distilled depiction of a complex and dynamic system and are intended to be used for informational purposes only and with the context provided when presented. Many facilities represented in these maps are authorized by Metro through different mechanisms to accept multiple waste types and perform multiple solid waste management activities that may not be identified in an effort to illustrate Metro's solid waste system as of the date of the presentation in an abbreviated format. For more information, contact hila.ritter@oregonmetro.gov.

Regional Solid Waste System – Landfills & disposal sites



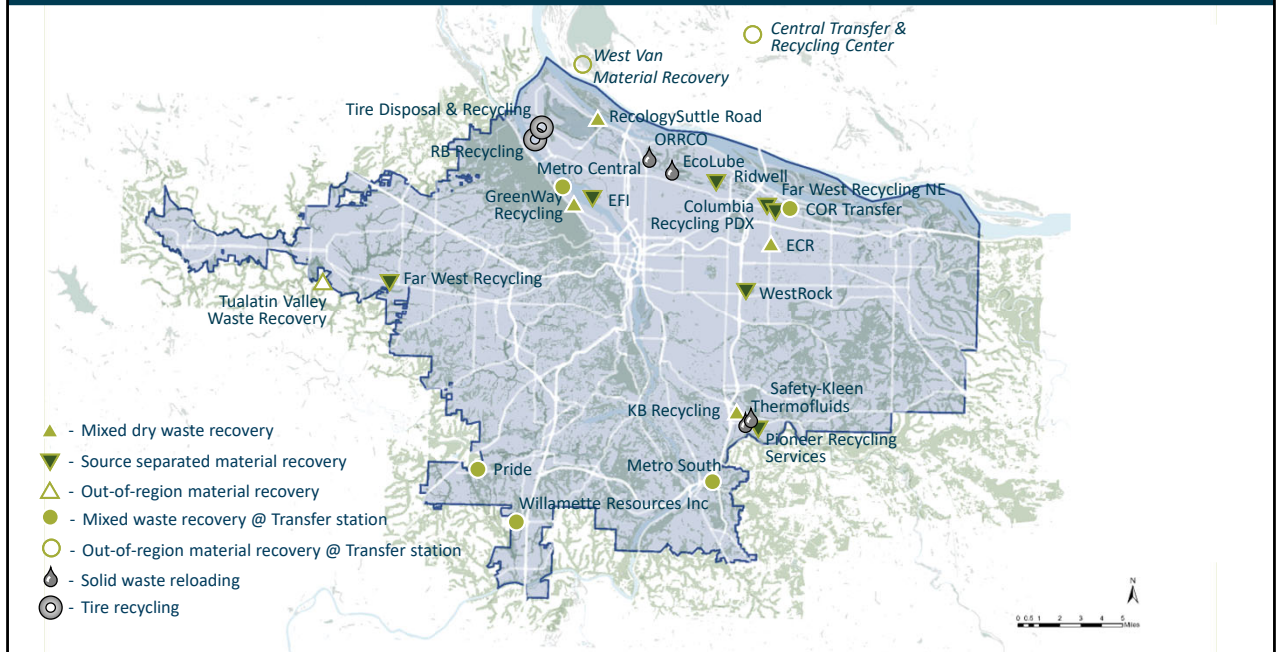
Note: the maps in this presentation are a distilled depiction of a complex and dynamic system and are intended to be used for informational purposes only and with the context provided when presented. Many facilities represented in these maps are authorized by Metro through different mechanisms to accept multiple waste types and perform multiple solid waste management activities that may not be identified in an effort to illustrate Metro's solid waste system as of the date of the presentation in an abbreviated format. For more information, contact hila.ritter@oregonmetro.gov.

Regional Solid Waste System – Landfills & disposal sites



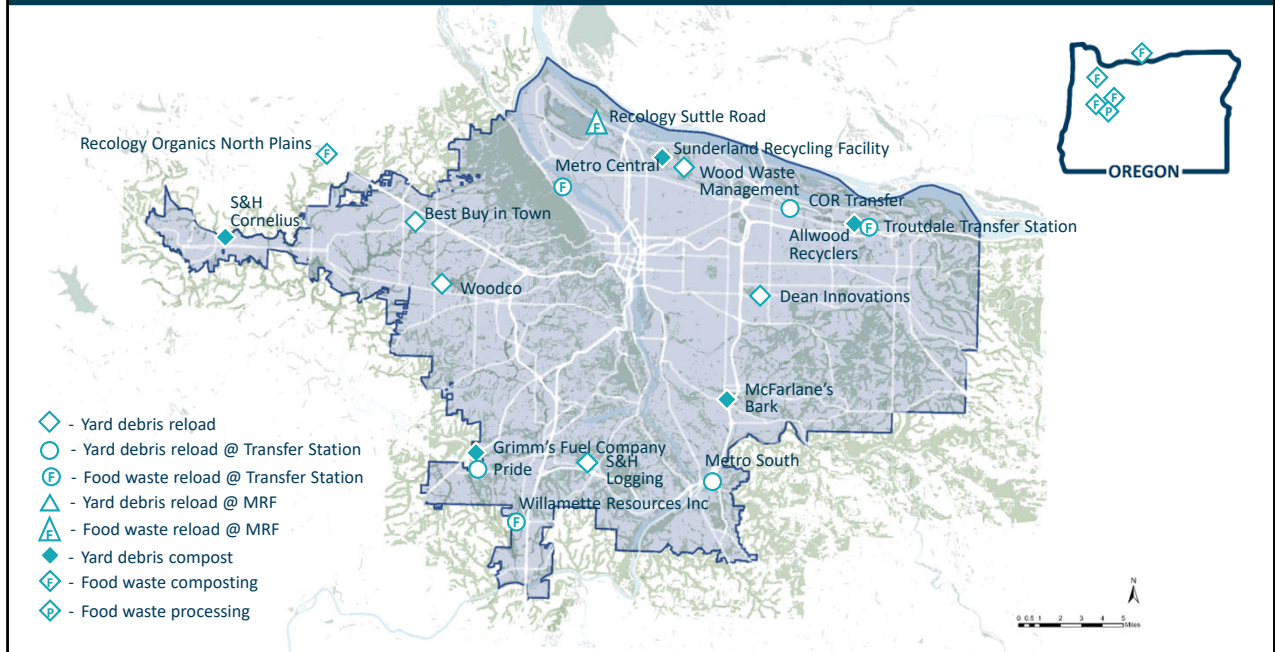
Note: the maps in this presentation are a distilled depiction of a complex and dynamic system and are intended to be used for informational purposes only and with the context provided when presented. Many facilities represented in these maps are authorized by Metro through different mechanisms to accept multiple waste types and perform multiple solid waste management activities that may not be identified in an effort to illustrate Metro's solid waste system as of the date of the presentation in an abbreviated format. For more information, contact hila.ritter@oregonmetro.gov.

Regional Solid Waste System – Material recovery & reload facilities



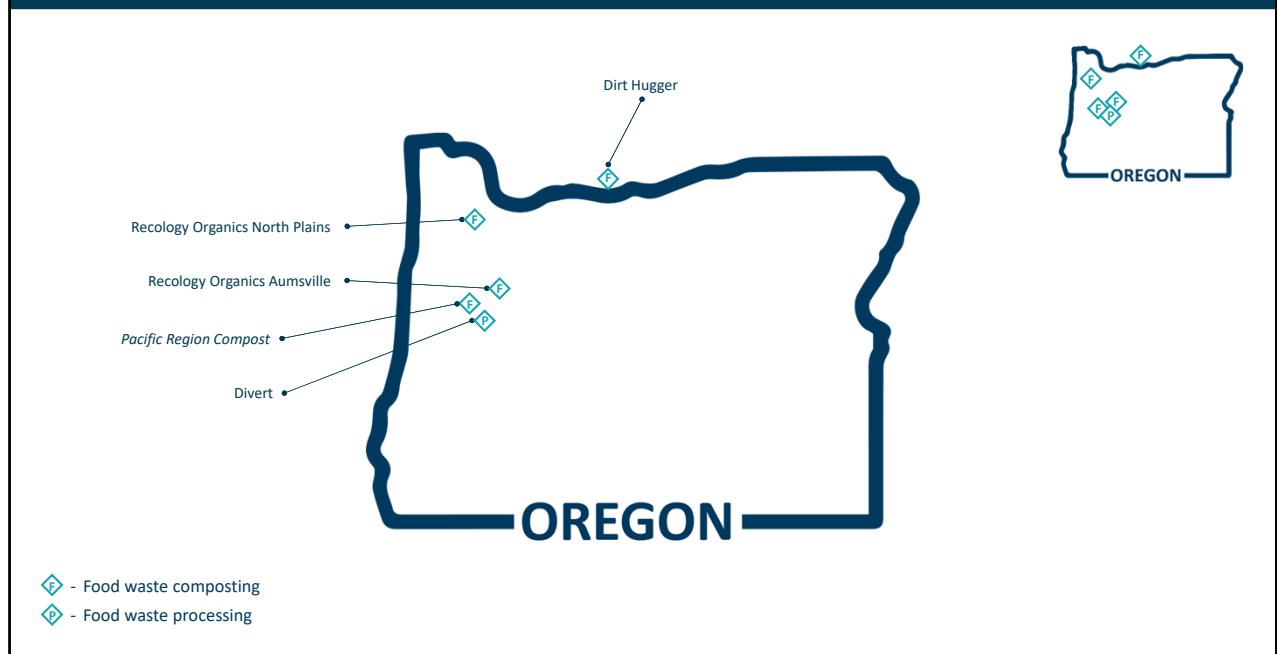
Note: the maps in this presentation are a distilled depiction of a complex and dynamic system and are intended to be used for informational purposes only and with the context provided when presented. Many facilities represented in these maps are authorized by Metro through different mechanisms to accept multiple waste types and perform multiple solid waste management activities that may not be identified in an effort to illustrate Metro’s solid waste system as of the date of the presentation in an abbreviated format. For more information, contact hila.ritter@oregonmetro.gov.

Regional Solid Waste System – Compost & yard debris facilities



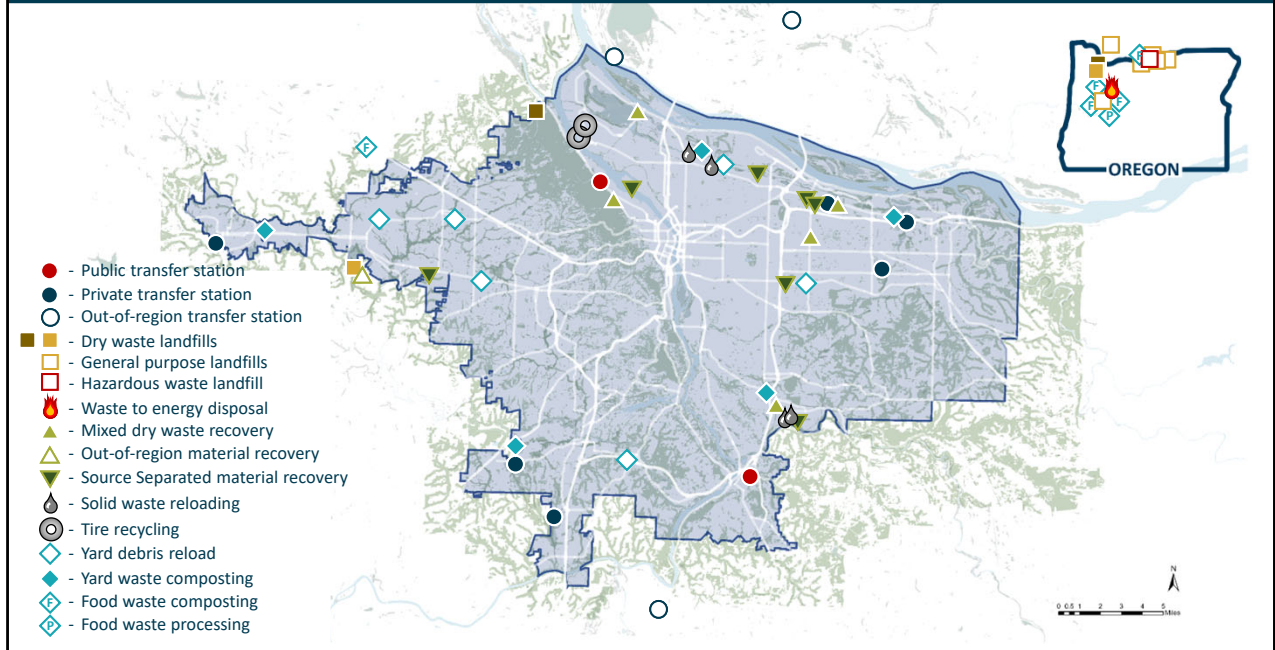
Note: the maps in this presentation are a distilled depiction of a complex and dynamic system and are intended to be used for informational purposes only and with the context provided when presented. Many facilities represented in these maps are authorized by Metro through different mechanisms to accept multiple waste types and perform multiple solid waste management activities that may not be identified in an effort to illustrate Metro's solid waste system as of the date of the presentation in an abbreviated format. For more information, contact hila.ritter@oregonmetro.gov.

Regional Solid Waste System – Compost & food waste processing facilities



Note: the maps in this presentation are a distilled depiction of a complex and dynamic system and are intended to be used for informational purposes only and with the context provided when presented. Many facilities represented in these maps are authorized by Metro through different mechanisms to accept multiple waste types and perform multiple solid waste management activities that may not be identified in an effort to illustrate Metro's solid waste system as of the date of the presentation in an abbreviated format. For more information, contact hila.ritter@oregonmetro.gov.

Regional Solid Waste System – July 2022



Specific types and amounts of waste generated in the Metro area are authorized to go to specific facilities through a system of solid waste facility licenses, non-system licenses, franchises and designated facility agreements.

Questions?

Hila Ritter, Solid Waste Compliance Coordinator

Hila.Ritter@oregonmetro.gov

503-964-0021

My gender pronouns: she, her hers

