

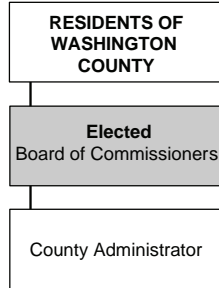


at a glance ...

Mission

To provide excellent and cost-effective services that support healthy, peaceful, safe and sustainable communities; and encourage meaningful participation in community activities and County governance.

Structure

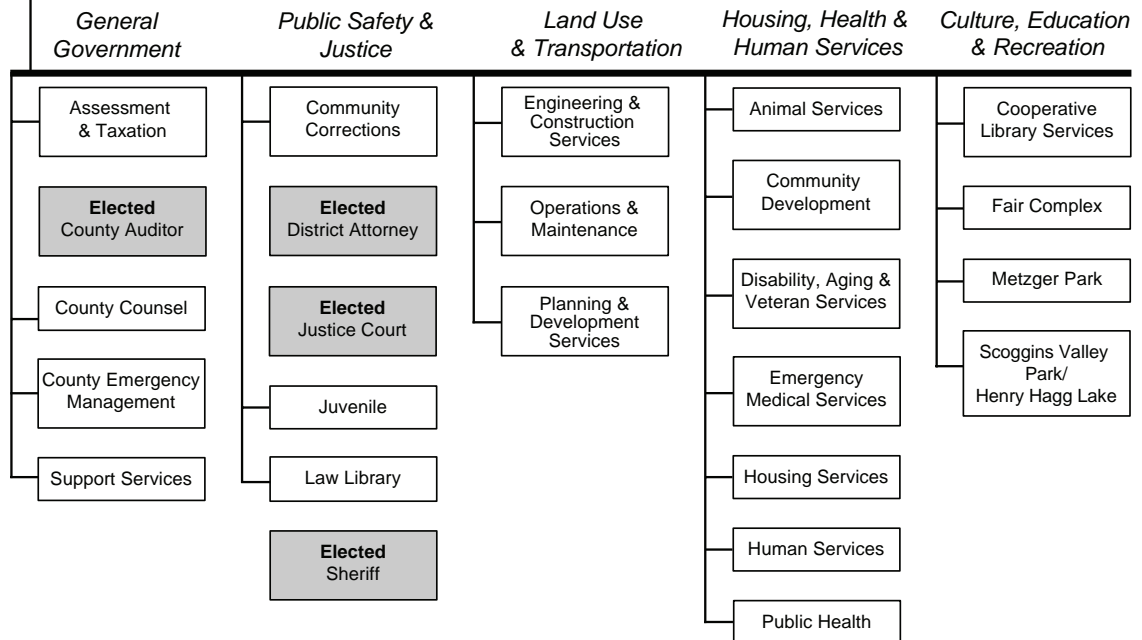


Governance

- Council/manager form of government
- Chair full-time, elected at-large
- Five-member Board
- Four Commissioners part-time, elected by district

Employees

2,188 full-time equivalent positions



County Strategic Plan

Fundamental Principles:

Washington County...

- Is one of many participants in the continuum of services.
- Provides services of countywide benefit.
- Prioritizes services according to its Finance Plan.

Methods of Service Delivery:

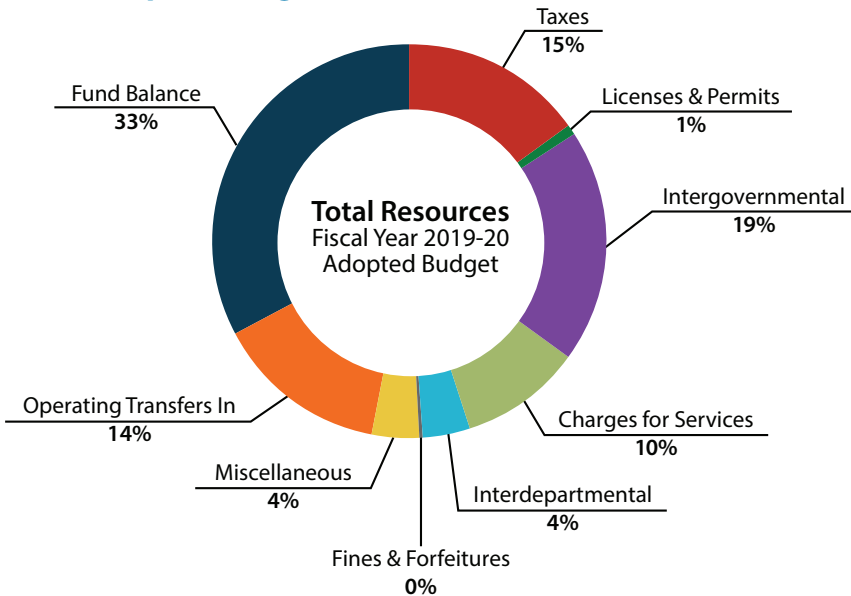
- Direct service—directly involved in service provision.
- Supporting the agenda—supports others' activities.
- Partnerships—partners with others to provide services.

Countywide vs. Municipal Services:

- County Strategic Plan dictates that countywide property tax dollars will be expended on those services that are of countywide benefit and furthermore, that those services are to be provided on a prioritized basis according to the priorities of the community.
- Municipal services benefit specific sub-areas and groups within Washington County. Cities, geographically limited special districts, or user fees typically fund these services.

County Administrative Office
 254 N First Avenue
 Hillsboro, Oregon 97124
 503-846-8685 • Fax 503-846-4545
www.co.washington.or.us

Total Adopted Budget for Fiscal Year 2019-20



Resources

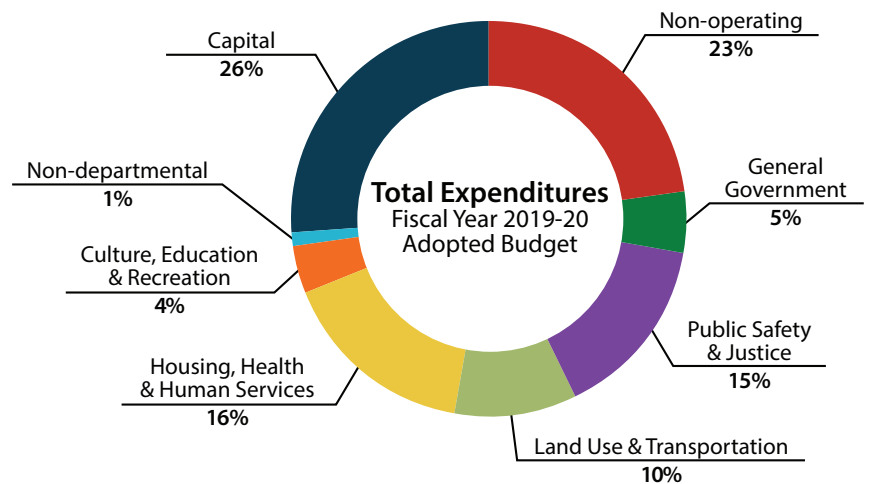
Taxes	\$214,706,974
Licenses & Permits	13,501,299
Intergovernmental	265,055,222
Charges for Services	145,394,592
Fines & Forfeitures	3,078,800
Interdepartmental	50,400,418
Miscellaneous	55,768,472
Operating Transfers In	197,800,772
Fund Balance	460,814,075

Total: \$1,406,520,624

Expenditures by Functional Area

General Government	\$75,419,738
Public Safety & Justice	206,503,495
Land Use & Transportation	135,363,881
Housing, Health & Human Services	221,371,913
Culture, Education & Recreation	61,681,932
Non-departmental	12,640,733
Capital	364,430,404
Non-operating	329,108,528

Total: \$1,406,520,624



Major initiatives and projects

Diversity, Equity and Inclusion

As providers of vital public services, Washington County's charge is to know, respect, reflect and serve the diverse people of Washington County. Critical to that effort is making a clear and honest assessment of our organizational culture and a commitment to continuous improvement regarding diversity, equity and inclusion (DEI). It also means examining and reforming government systems and practices used in the delivery of public services to ensure equitable outcomes for our employees and the community. The Board of County Commissioners has directed staff to begin a long-term, comprehensive strategic plan for DEI over the next five years. More info: <https://www.co.washington.or.us/CAO/diversity-equity-and-inclusion.cfm>

Affordable Housing

For nearly 70,000 households in Washington County, more than 30% of family income is required to cover rent or mortgage costs. Despite having higher-than-average wages at the top of the state's labor market, Washington County is also home to over 25,000 households earning less than \$25,000 in income per year. Washington County is working collaboratively with Metro, and our city and nonprofit partners, to expand the supply of affordable housing. Using regional bond funds, we anticipate investing in 1,316 additional affordable housing units in our community by 2026. These regional dollars are helping Washington County make progress towards a more affordable community. More info: <https://www.co.washington.or.us/Housing/AffordableHousingBond>

Public Safety and Library Levies

Proposals to replace and renew local option levy funding for the Public Safety and the Cooperative Library systems are to appear on the ballot in 2020. Replacing the Public Safety Levy would maintain funding for roughly 16% of countywide public safety services, including special enforcement teams, jail, work-release center, prosecution, probation and parole, juvenile services and shelters for victims of domestic violence. Renewing the Library Levy would continue funding for the centralized services of the Cooperative and payments to the system's 15-member libraries. The local option levy provides 40% of the library system's total revenue. More info: <http://www.co.washington.or.us/levies>

County Administrative Office
254 N First Avenue
Hillsboro, Oregon 97124
503-846-8685 • Fax 503-846-4545
www.co.washington.or.us