



CPO7

Bethany Rock Creek Sunset West

June 2023 Meeting Agenda Monday, June 12, 7-8 pm In person at the Springville Elementary School Cafeteria 6655 NW Joss Road, Bethany, OR 97229

This agenda has been provided to you by CPO 7 community volunteers.

AGENDA

7:00 pm | Welcome and Agenda Updates

7:05 pm | Community Briefings

- Updates from our service providers, as resources allow, from Washington County Sheriff's Office, Tualatin Hills Park & Recreation District (THPRD), Tualatin Valley Fire & Rescue (TVF&R), and Tualatin Valley Water District (TVWD)

7:15 pm | Discussion of future of CPO 7

- What has your CPO done for the community in the last 20 years?
- Are there still things you'd like for your CPO to do for your community?
- What can you do to ensure the future of your CPO?

7:20 pm | Feature Topic

Sale of Surplus Elementary School Site in Beaverton School District

Steven Sparks, Executive Administrator for Long Range Planning from Beaverton School District will join us to answer our questions about:

- The potential sale of the elementary school site on 174th east of Westview High School to a developer planning to develop 66 new home lots on the site
- Beaverton School District Long Range Facility Plan's "target" school sizes
- Beaverton School District enrollment history and projections
- Enrollment history and projections of schools located in CPO 7
- The 2022 Capital Bond investments in CPO 7 Schools.

Wrap up with a Q&A session with attendees and Mr. Sparks

7:50 pm | It's your CPO!

- Attendee announcements, questions, comments, suggestions for future meeting topics.

8:00 pm | Adjournment

Miss a meeting? Were you unable to attend the meeting this month or did you miss an earlier meeting? Our meetings are now posted on our YouTube channel—Washington County CPO 7.

Do you have questions? Do you have questions about something that is happening in your neighborhood? Email CPO 7 at CPO7leaders@gmail.com, we may have answers for you. If not, we will direct you to someone that can help.

CPO 7 MEETINGS

Join your neighbors at monthly CPO 7 meetings to discuss timely local issues. Meetings usually include one or more guest speakers who provide valuable information on current topics.



CPO 7 CONTACT
cpo7leaders@gmail.com

CPO 7 STEERING COMMITTEE
All CPO 7 Steering Committee positions are open. Consider volunteering for your local CPO! Email CPO 7 (see above) for more info.

WASHINGTON COUNTY CONTACT
Samsam Abdi
Community Engagement Program Coordinator
samsam_abdi@washingtoncountyor.gov
503-757-0747
WashCoCPO.org

CPO7 

[www.facebook.com/
CPO7WashCo](http://www.facebook.com/CPO7WashCo)



[https://nextdoor.com/agency-
city/or/washington-county/](https://nextdoor.com/agency-city/or/washington-county/)



[www.YouTube.com/
Washington County CPO 7](http://www.YouTube.com/WashingtonCountyCPO7)

The mission of Community Participation Organizations in Washington County is to encourage and empower public involvement.

CPO7 | WashCoCPO7.org

WashCoCPO.org
Washington County CPO Program
155 N First Avenue, Suite 370 MS20, Hillsboro, OR 97124

CPO Program
Neighbors Working Together!

PRESORT STD
US POSTAGE
PAID
PORTLAND, OR
PERMIT 1

Land Use Projects



ONLINE > Follow the projects being proposed in your community, how and when you can provide your comments about projects, and whether projects get approved.

Projects Under Review: <https://webapps.washingtoncountyor.gov/projects-review/>

Comment on a Project: <https://webapps.washingtoncountyor.gov/projects-comment/#top>

Notices of Decision: <https://webapps.washingtoncountyor.gov/notices-of-decision/>

Frequently Discussed Project Applications: <https://www.washingtoncountyor.gov/current-planning/frequently-discussed-project-application>

Opportunities to Participate

Camping survey found here: <https://www.washingtoncountyor.gov/housing/news/2023/05/24/time-place-manner-public-camping-regulation-community-engagement>

Upcoming work on SNR: <https://www.washingtoncountyor.gov/ut/planning/snr-focused-look>

CPO Accomplishments

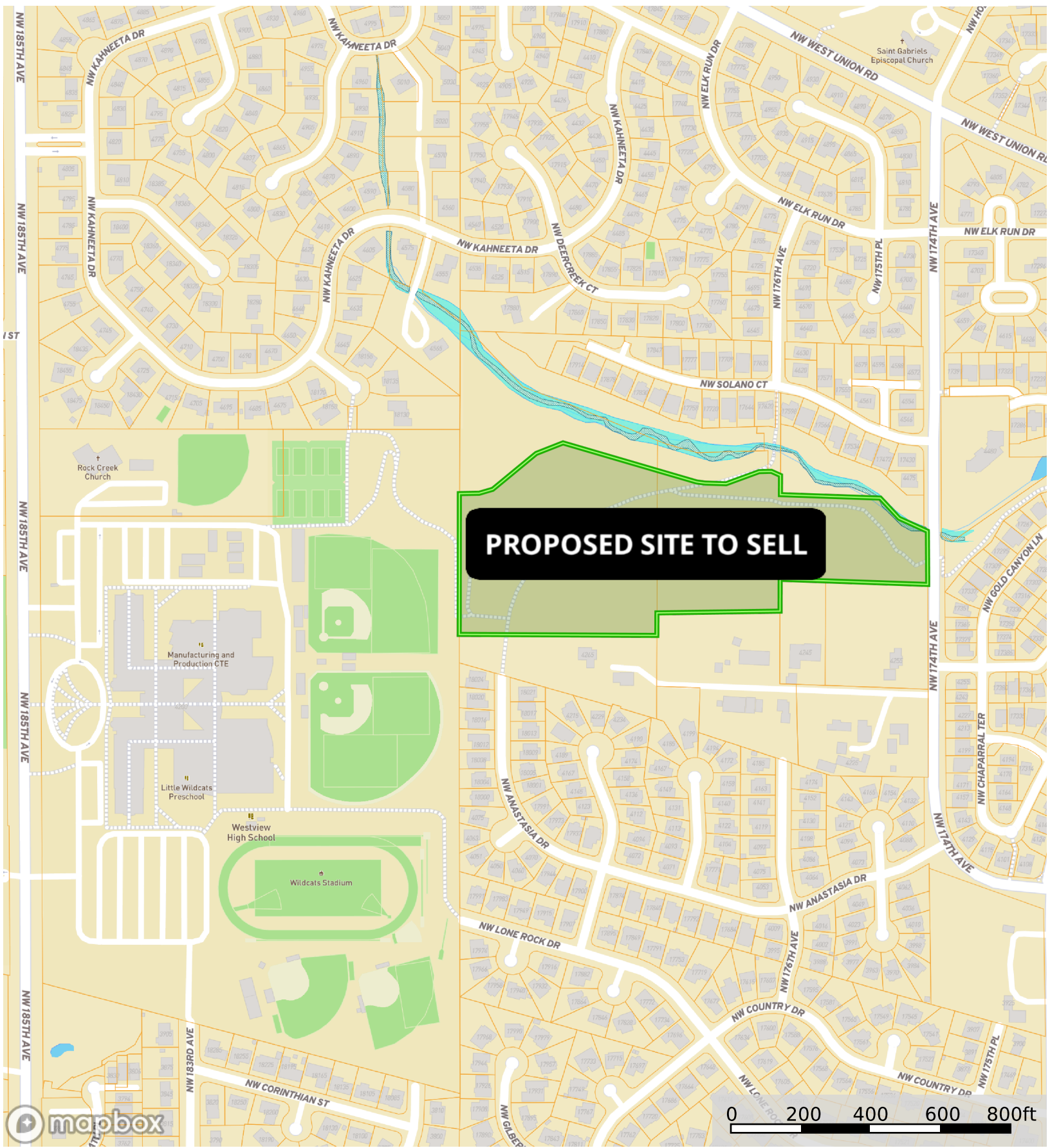
Prepared by CPO 7 volunteers

CPOs do much more than just hold monthly meetings. CPO 7 leaders serve as the eyes and ears of our community. As leaders we often identify and seek solutions for problems facing our community. Below is a partial list of CPO 7 issues tackled by CPO leadership in the 2000s.

CPO 7 Accomplishments from 2002 to present:

- Identified need for all new development within THPRD's planning area to be annexed to THPRD as a Condition of Approval. In conjunction with CPO 1, we played an important role in adoption of the Ordinance codifying this annexation requirement.
- Preserved a corridor to realign Saltzman Road to Springville Road by working through the Ordinance process.
- Ensured that Bethany residents would have a voice in planning for North Bethany by holding our elected Board of Commissioners responsible for governance of North Bethany. Additionally, we supported the urbanization of this area, allowing development of North Bethany to move forward without delays caused by appeals.
- Two CPO 7 representatives served on the North Bethany Stakeholder Working Group. Additional members served on work groups that followed the initial planning.
- Played an important role in ensuring PCC would take responsibility for moving their entrance to align with the street to the south as part of the planned improvements to Springville Road.
- Advocated for protected pedestrian crossings, including the Westside Trail crossing at Laidlaw Road and the Waterhouse Trail Crossing at Springville Road
- Worked to support THPRDs request for extension of the trail connection between the Rock Creek Trail/Westside Trail to Springville Road through Multnomah County.
- Identified for Board of Commissioners the need for ballot drop boxes at the Bethany and the Aloha Libraries.
- Successfully worked with City of Hillsboro to eliminate plans to install a red light camera at the 185th/Evergreen intersection.
- Recommended representatives from our CPO 7 membership to serve on the 2014/2015 TSP update.
- Worked with TriMet, Cedar Mill Bible Church and CPO 1 to secure a park and ride lot in the Cedar Mill Bible Church parking lot.
- Evaluated and submitted needed bike and pedestrian improvements within our CPO to the County's Bike/Ped list for consideration during the URMDAC funding process.
- Recommended representatives on road advisory committees for:
 - Cornell Road between 173rd and Evergreen Parkway
 - Cornell/Murray Blvd. Intersection
 - Filbert Road mitigations which resulted in right turns onto Saltzman Road
 - Saltzman Road from Bronson to Cornell
 - Bethany Blvd. expansion from Highway 26 to West Union
 - Saltzman Road between Bayonne and Laidlaw Road

- Springville Road between 185h and entrance to PCC
 - Saltzman Road/Thompson Road intersection realignment
- Ensured BSD was aware that SDCs paid to THPRD when new schools were constructed could be used for playground improvements at said school.
- Worked with BSD to improve communications to development community through their Service Provider Letters.
- Filed an appeal on a land use application to ensure an off-site sidewalk was constructed to allow children from the approved development to the nearby school.
- Worked with BSD to ensure developer was required to construct off-site sidewalks within county ROW to allow children from the approved development to walk to Findley School.
- Worked to connect North Bethany sidewalks to THPRD Trail when developers failed to make connections.
- When fire hydrant identified to be used to supply construction with water on Kaiser Road was causing traffic snarls, we requested it to be moved to a less congested area.
- Worked with TriMet to move bus stop signs installed in sidewalk to planter strips on Laidlaw Rd.
- Played a role in clarifying where fire stations can be located.
- Submitted suggested names for North Bethany streets for developers to utilize.
- Have written multiple letters demonstrating community support for THPRD grant applications.
- Wrote a letter of support for a federal grant for the widening of Bethany Blvd. over Hwy. 26.



PROPOSED SITE TO SELL

- Proposed Elementary Site
- 100 Year Floodplain
- 500 Year Floodplain
- Floodway
- Special
- Unmapped/ Not Included

North Bethany Elementary Links

Sato Elementary

[At a Glance Profile](#)

2021-2022
Student enrollment: 761 students
Class size: 27 v 22 Oregon average

Rock Creek Elementary

[At a glance profile](#)

2021-2022
Student enrollment: 435 students
Class size: 25 v 22 Oregon average

Bethany Elementary

[At a glance profile](#)

2021-2022
Student enrollment: 399 students
Class size: 25 v 22 Oregon average

Springville Elementary

[At a glance profile](#)

2021-2022
Student enrollment: 774 students
Class size: 26 v 22 Oregon Average

Considerations of Elementary School Locations

How many arterials or neighborhood collectors are we asking young children to cross? Springville Rd, West Union, 185th, Kaiser, and Joss Ave are all arterials and collectors with heavy construction traffic in the morning and afternoons.

- [It's About my Children's Independence](#)

Do we have local control to make those routes actually feel safe for parents?

- [Neighborhood Streets Program: A county program needing reform](#)

Is bussing/driving to a large 750+ student school necessary?

- [The School Bus Driver Shortage is a Problem We Didn't Have to Have](#)