

CPO 6 meeting 12-07-23

Meeting start – 701p

Attendance – about 35 people

Welcome & Intro

Public Safety Update

Sheriff's Office – Lucy Bailey updating

- Shared calls map for November
- Common for package thefts this time of year, please do call

TV Water District – Frank Reed updating

- Water flushing upcoming (opening hydrants to flush)
 - o Expect to see open hydrants, not a concern
- 209th & Farmington site expected to be wrapped up early next year
- Fluoride to fluoridated areas paused due to construction on B-H Hwy tying in mains, started Monday but will take 1-2 weeks to hit the effect, might need supplemental fluoride.
- Not too late to winterize house, know how to turn off external water

Tualatin Hills Park & Rec Update

Tim Bonnin updating

- THPRD looking at options to stabilize funding for services to maintain current levels of service – establish local levy tax members to look into options. Recommends local option levy May 2024, 5-year levy of 50c per \$1000 assessed value. Funding will save positions and maintain facilities
- Sat Dec 9 – Sensory Santa at Conestoga 10a
- Tues Dec 12 – In-person Parks & Facility Advisory meeting at Cedar Hills 6p
- Wed Dec 13 – Board of Directors Meeting TV Water District at 6p
- Friday Dec 15 – Elsie Stuhr Day at Elsie Stuhr Center
- Friday Dec 15 – Dive-in Movie at Conestoga, 6p
- Wed Dec 20 – Nature & Trails advisory committee meeting
- Friday Dec 29th – Joyous Kwanzaa Celebration 5p
- Question – bathroom construction, but with upcoming levy, will that cost be included
- Question – concern about recent court issue making parks a legal issue. Person on trail accessed a beach, fell, and the court case said recreational immunity (prevent from being sued if someone is hurt) didn't apply because they were walking to rec.

TVFR E62 Update

- Not a lot of change, this is a training station so training new hires
- Busy station – 3900 calls over last year (medical, auto, fire, etc)
- No major incidents or abnormal events

- Heads-up that in May 2024, going to go out for renewal of local option levy, used for TVFR funding. Currently funds 92 firefighter/paramedic positions, going for increase of 36 more positions. Current levy expires June 2025, trying to get ahead of it
- Question – when/where E62 moving? Still looking at 185th & Pheasant location, but increased costs from when project started impacting timelines

Main Agenda:

Update on the SW 209th Ave Project – Jed Corley updating

The screenshot shows a Beamer presentation slide with a black header containing a blue arrow icon and the text "Work completed". The slide content is a bulleted list of project updates. At the bottom left is the URL "www.co.washington.or.us" and at the bottom right is the page number "2".

- Widening 209th Avenue from the railroad crossing at TV Hwy to the south project limits at Eggert Way
- Street lighting, concrete walks, cycle track, landscaping and base paving on the west side of 209th Avenue, south of railroad crossing.
- Right-turn lane on Blanton Street approaching 209th Avenue from the west.
- Storm system for the project is 95% installed.
- Water main replacements on 209th Avenue and TV Hwy
- Curb and sidewalk on the north side of TV Hwy and on 209th Avenue, north of TV Hwy
- Westbound lanes of TV Hwy are reconstructed and base paved.

Will have 90-day closure of 209th south of TV to raise the road by about 3' to redo rail crossing

The screenshot shows a Beamer presentation slide with a black header containing a blue arrow icon and the text "Additional project coordination". The slide content is a bulleted list of coordination items. At the bottom left is the URL "www.co.washington.or.us" and at the bottom right is the page number "3".

- Tualatin Valley Water District:
 - New water mains on 209th Avenue and TV Hwy
- City of Hillsboro:
 - New water main; highlight fiber on 209th Avenue
- Clean Water Services:
 - Stormwater system on 209th Avenue and on Alexander Street
- South Hillsboro Development:
 - Additional right-turn lanes on 209th Avenue southbound at Industrial Way, and eastbound Blanton Street at 209th Avenue
- Oregon Department of Transportation:
 - Reconstruction of 1,500 feet of TV Hwy centered on the 209th Avenue intersection
- Portland & Western Railroad and Union Pacific Railroad:
 - Reconstruction of at-grade railroad crossing of 209th Avenue at TV Hwy

→ 209th Avenue: Looking north toward Blanton Street

- 209th Avenue south of TV Hwy was widened to the west
- Traffic is moved onto the completed portion during reconstruction of existing roadway



www.co.washington.or.us

4

→ 209th: Looking north from railroad crossing at TV Hwy

209th Avenue is right-in/right-out for north and southbound traffic at TV Hwy to facilitate the reconstruction of the center of TV Hwy through the 209th Avenue intersection



www.co.washington.or.us

5

→ TV Hwy: Looking west near east project limits

- In the second of three stages to reconstruct about 1,500 feet of TV Hwy centered on the 209th Avenue intersection
- Includes raising the intersection about 3 feet to smooth the approach to the upgraded railroad crossing to the south



www.co.washington.or.us

6

Click to add notes

→ Next steps

- The center of TV Hwy is currently under construction to raise it to the new roadway grade. Completion estimated February 2024.
- Reconstruction of the south third of TV Hwy, including the railroad crossing reconstruction from February-July 2024. This includes a 90-day closure of 209th Avenue between TV Hwy and Industrial Way at the end of this stage.
- Reconstruction of 209th Avenue, south of the railroad tracks. Completion expected in summer 2024.
- Final paving, striping and landscaping is the final stage. Completion estimated in September 2024.

www.co.washington.or.us

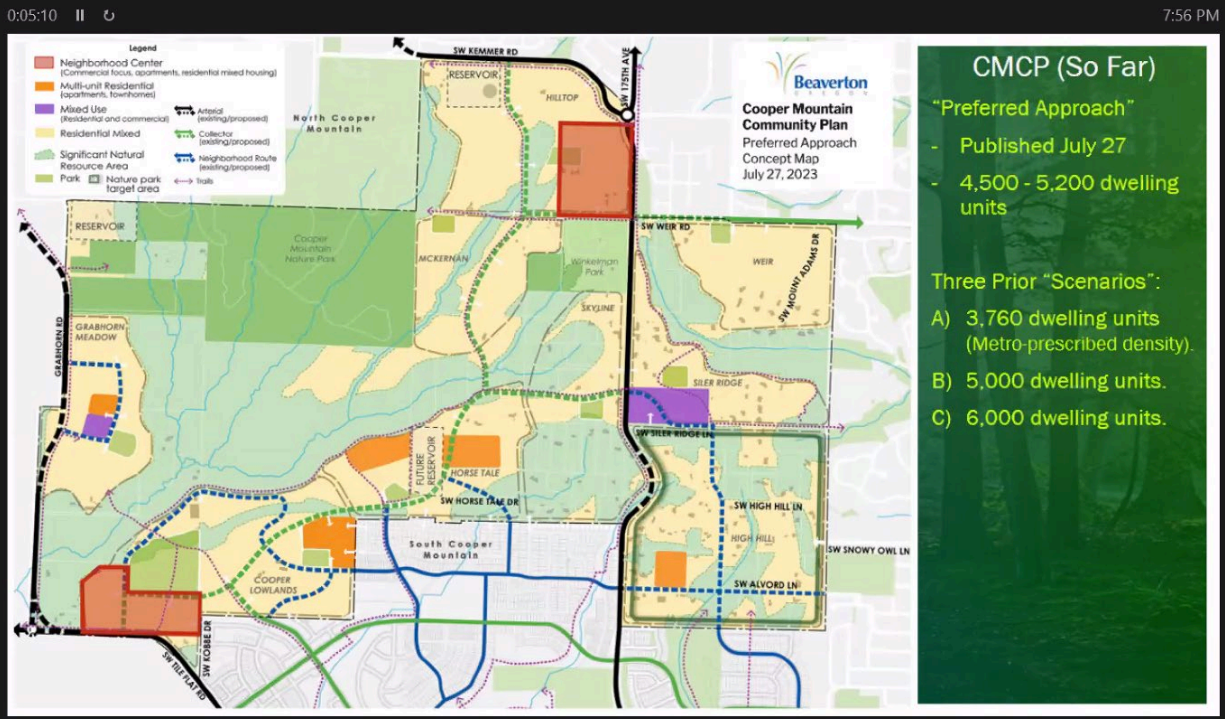
7

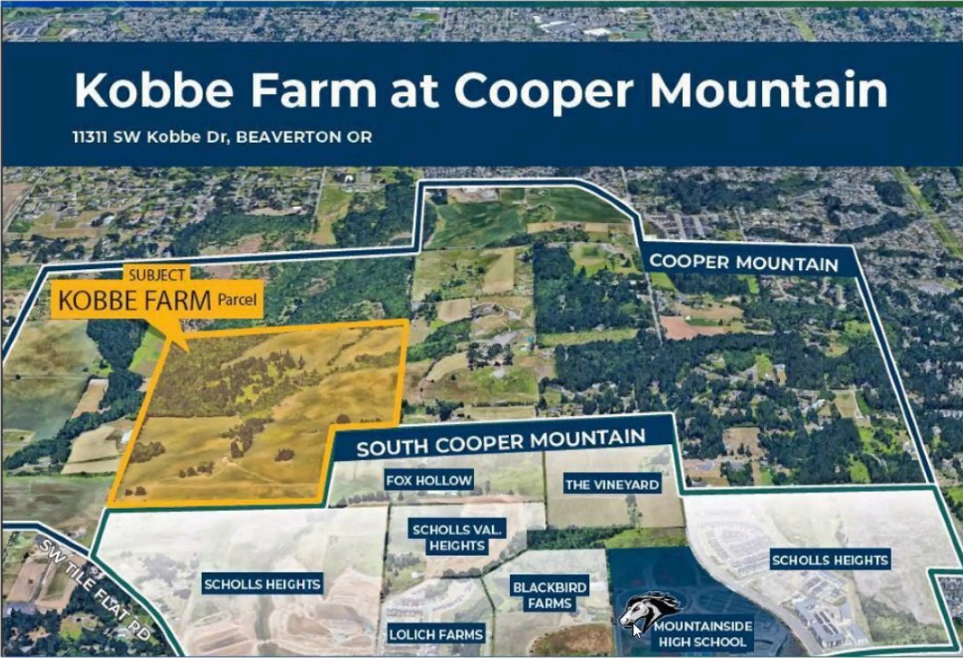
Friends of Cooper Mtn Update
Dick Schouten updating

- Friends of Cooper Mountain – private citizens, not affiliated with any boards or agencies
- In existence for about 3 years, other principles include John Griffiths, Wendy Kroger, Victoria Franklin, and the late Tom York.

What Has Happened Since Our Last Visit (Spring)

- Continuing Grassroots Advocacy – Multiple Meetings with or Letters to:
 - Beaverton City Council: For the protection of the identified “Significant Natural Resource Areas” (SNRA) within the Cooper Mountain Community Plan area...before development closes the door.
 - Metro Council: To encourage Metro to re-ignite its moribund land acquisition efforts within its Cooper Mountain regional target area.
 - Washington County Commission, Beaverton City Council, and THPRD: To partner with Metro in the land acquisition effort on Cooper Mountain by committing Local Share, System Development Charge, or other funds.
- Cooper Mountain Community Plan (“CMCP”) Reviews at the City of Beaverton:
 - Planning Commission Work Session (May 3): Notable SNRA preservation sentiment.
 - City Council Work Session (July 18): Staff sought direction and Council encouraged SNRA protections.
 - CMCP “Preferred Alternative” map published by City Planning Staff (July 27).
- Sept. 18: THPRD (with owner permission) hosts tour of Kobbe Farm for public officials.
- October 4: Kobbe Farm (194 acres) goes on the market.
- November 28: Washington County Commission votes \$1M for Cooper Mountain Nature Park Expansion.





Kobbe Farm

- On the market as of October 4
- 194 acres
- Price: Unspecified
- Next to (south) of Nature Park.
- Largest and most resource rich private parcel within CMCP area

What's Next with the City of Beaverton?

- City Planning Staff requires additional time to formulate the proposed zoning map and development rules for the CMCP.
- So...Planning Commission review of the same pushed from October 11 to "early 2024".
- Expect release of the proposed final CMCP map/rules to the community in "early 2024".
- City Council work session/review of the same sometime later in 2024.

How Can CPO-6 Help?

- **Advocate to the Beaverton City Council:**
 - Strong protections for significant natural resource areas in the final CMCP.
 - Riparian corridors, rare prairie and upland habitat, mature tree canopies, wildlife corridors, etc.
 - Extensive setbacks between new developments/roads and SNRA under the CMCP.
 - Strong tree preservation code overlay and require that new roads avoid wildlife corridors.
 - That the City commit its "Local Share" funds (\$5M) toward expanding the CMNP.
 - Allocated to Beaverton from Metro's \$475M 2019 "Parks & Nature" Bond measure.
 - City request that Metro re-invigorate dormant land acquisitions on CM.
 - Prioritize the willing seller opportunity with the resource-rich adjacent Kobbe Farm parcel.
- **CPO-6 letters to Metro/THPRD supporting natural area acquisitions on CM.**
 - Metro Councilor: Gerritt Rosenthal. Metro Council President: Lynn Peterson.
 - THPRD General Manager: Doug Menke

Other

Mike McDermott – concern about townhouse developments with density on roads that have roads zoned commercial

Vienna – concerns about crossings without sidewalks and cars not stopping near schools. Will be reaching out

Bruce – Dec 19th CCI meeting 7p, will have Commissioner Katheryn Harrington present (virtual meeting)

Adjourn 816p