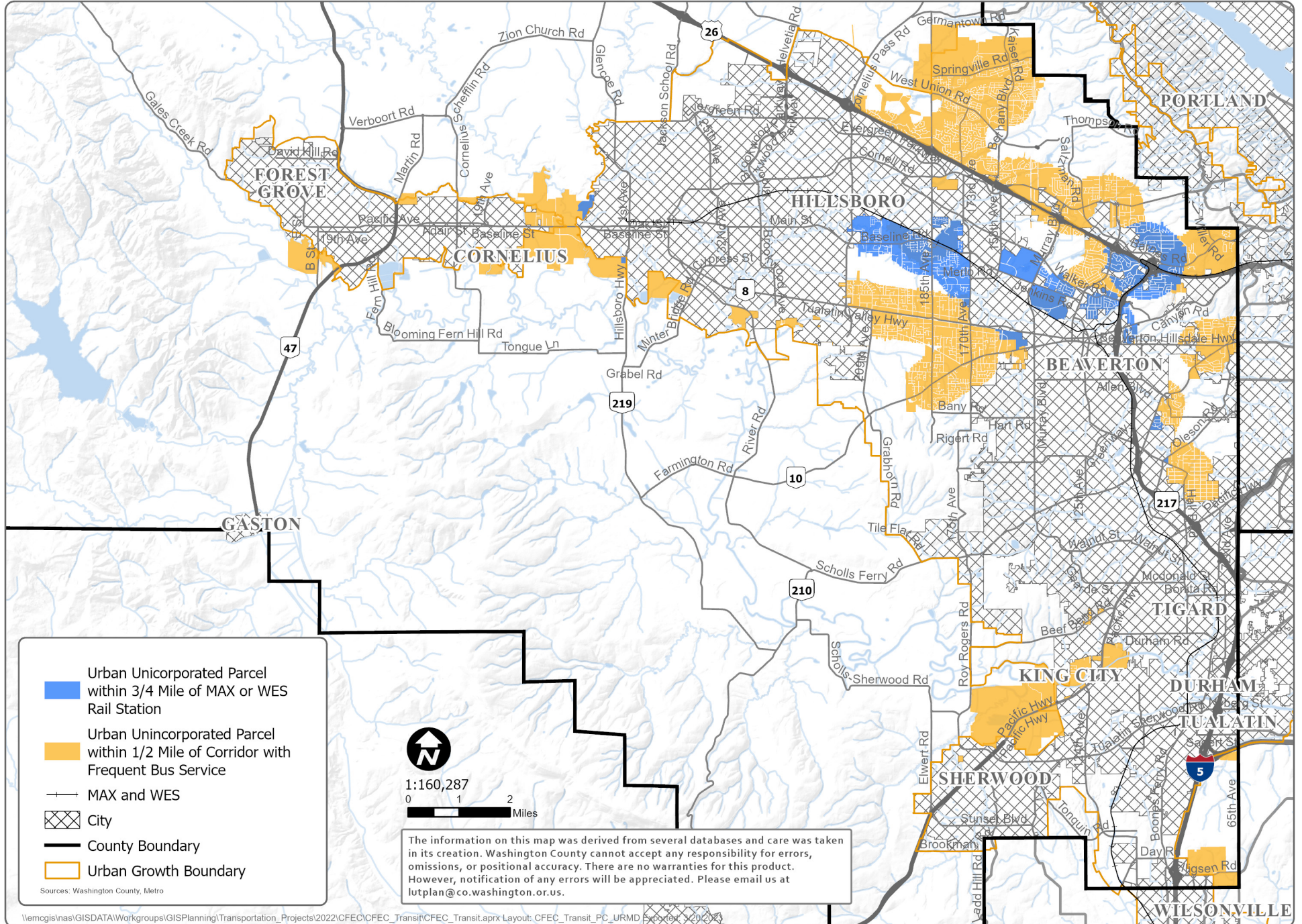


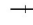







CFEC - Parcels with Reduced Parking Requirements in Urban Unincorporated Area

Based on Existing Rail and Bus Service in December 2022



 Urban Unincorporated Parcel within 3/4 Mile of MAX or WES Rail Station
 Urban Unincorporated Parcel within 1/2 Mile of Corridor with Frequent Bus Service
 MAX and WES
 City
 County Boundary
 Urban Growth Boundary

Sources: Washington County, Metro


 1:160,287


The information on this map was derived from several databases and care was taken in its creation. Washington County cannot accept any responsibility for errors, omissions, or positional accuracy. There are no warranties for this product. However, notification of any errors will be appreciated. Please email us at lutplan@co.washington.or.us.