



# STATEWIDE TRANSPORTATION IMPROVEMENT FUND

FY 2023-25 TRANSIT INVESTMENT  
PROPOSAL AND PUBLIC ENGAGEMENT  
OVERVIEW

TRANSIT ADVISORY COMMITTEE  
MEETING #4

| September 21, 2022

Land Use & Transportation

[www.co.washington.or.us](http://www.co.washington.or.us)

## → Goals today

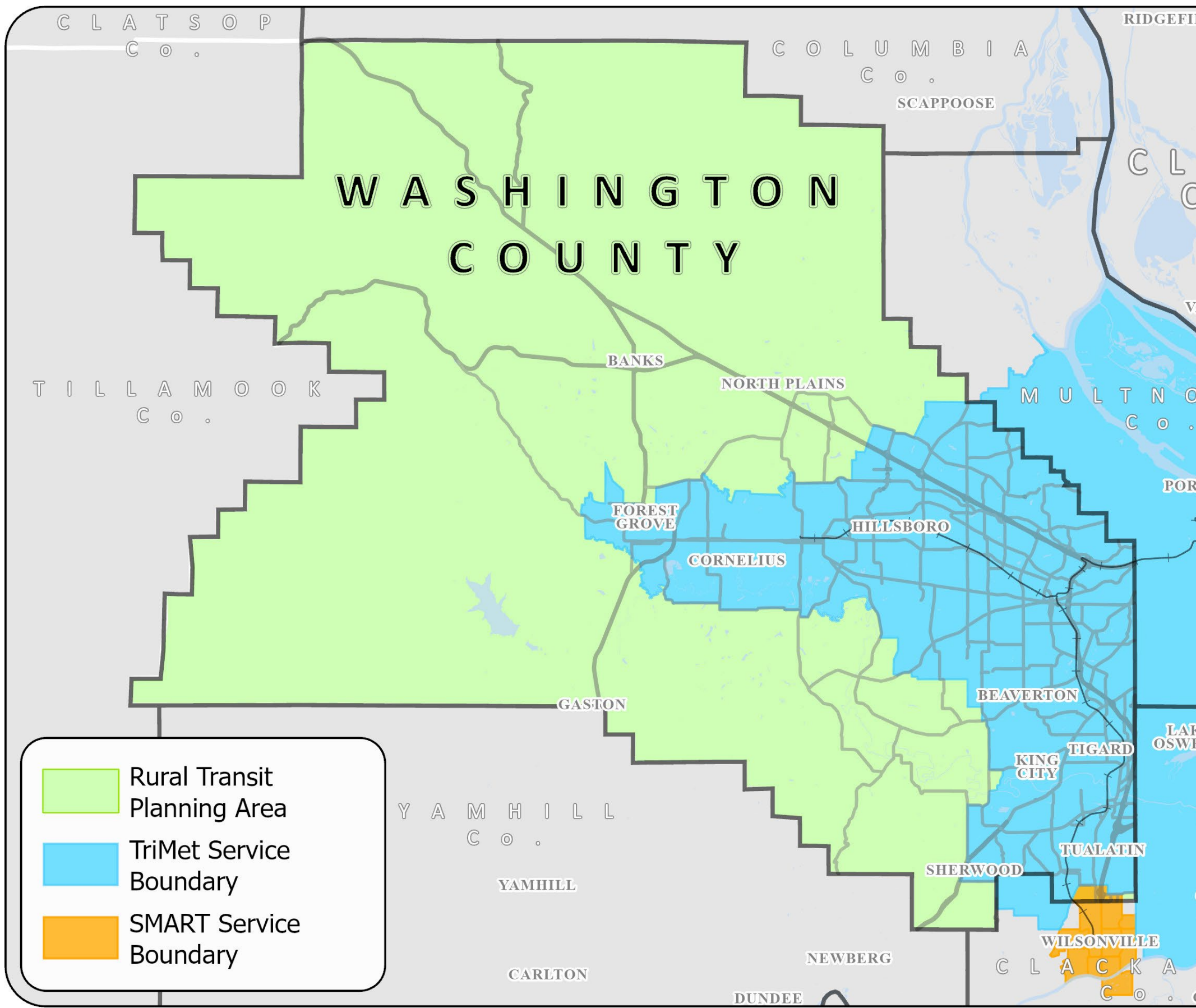
- Review public comments
- Recommend FY 2023-25 STIF priorities and updates to the Transit Development Plan



# Statewide Transportation Improvement Fund

- Established in HB 2017 with employee payroll tax
- Funds public transportation statewide to:
  - Maintain and expand the existing system
  - Expand services to communities with a high percentage of low-income households
  - Coordinate among transit providers to reduce service fragmentation
  - Improve the frequency and reliability of service connections between communities
  - Provide transit services for students in grades 9-12





# County Transit Committee

## Recommend transit priorities for STIF to Board:

- Service for areas outside TriMet, SMART districts
- Connect areas to TriMet district
- Community connectors in areas not well served by fixed-route transit in district

# → Public comment opportunity

- Raise virtual hand
- Up to 3 minutes

# → Community engagement summary

## Online survey

- End of July-Aug 31
- 168 survey responses

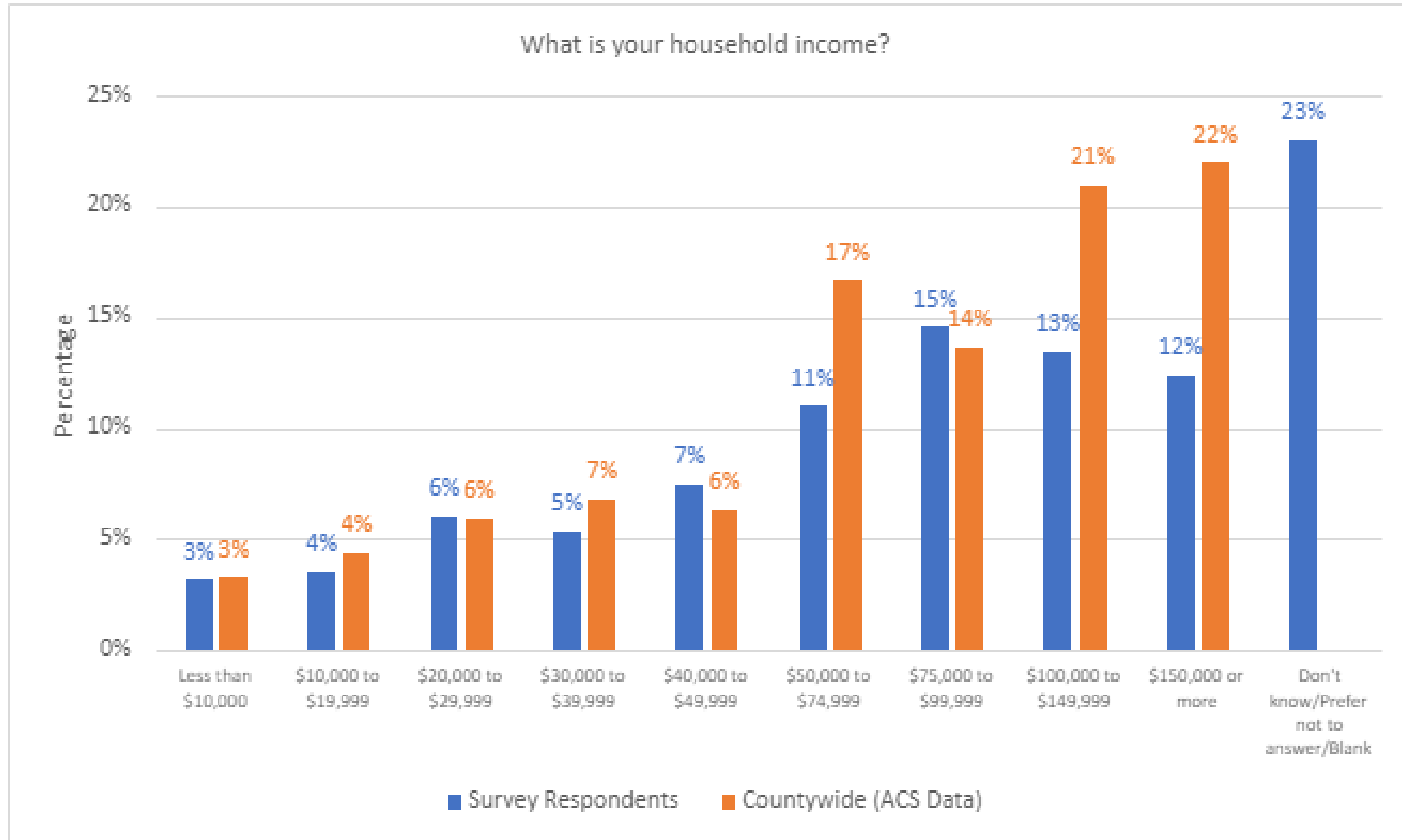
## Tabling events

- 11 events
- 114 survey responses

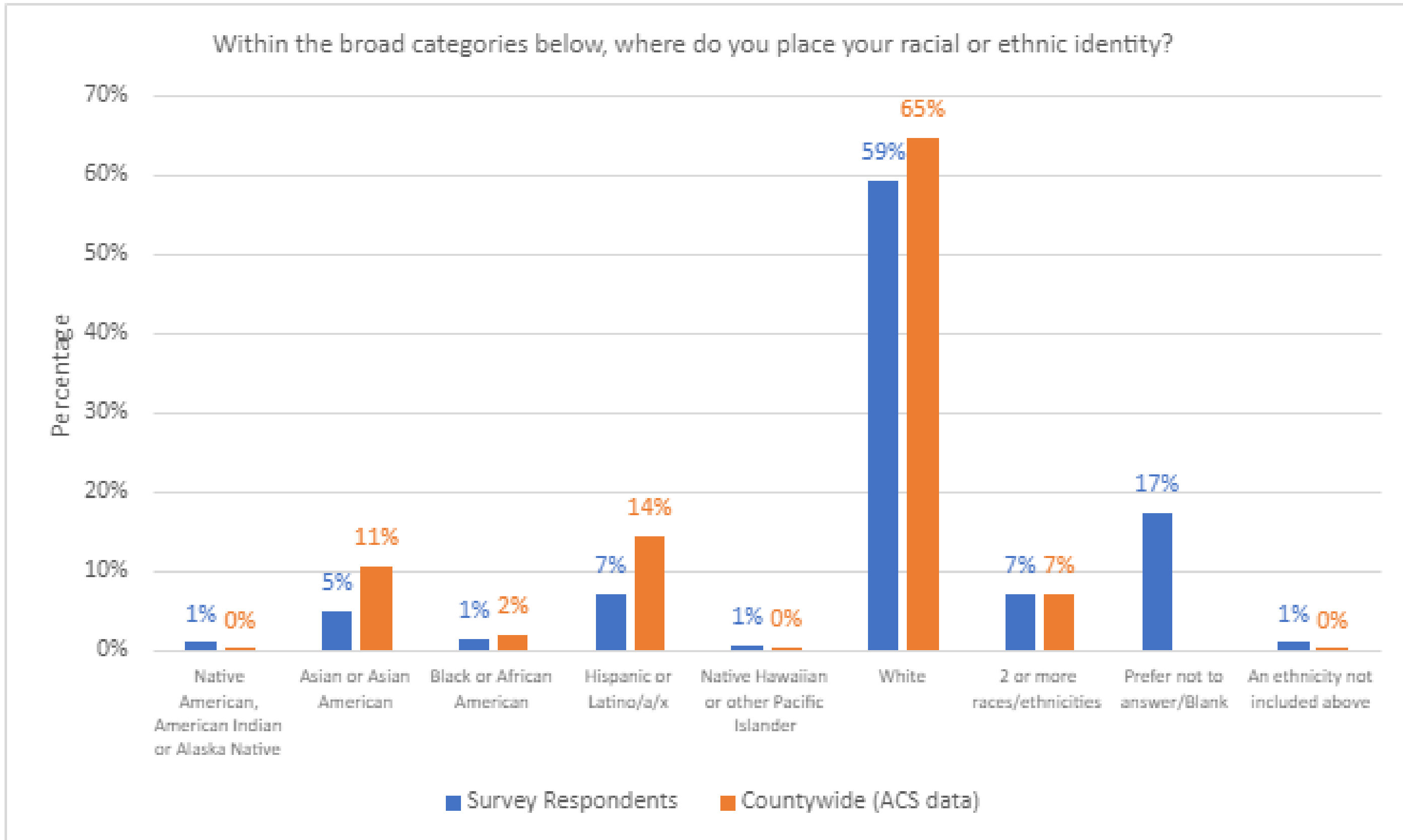
## Stakeholder briefings

- Tualatin Rotary
- Hillsboro Transportation Committee
- CPO 1
- Westside Economic Alliance

# → Survey participants – household income

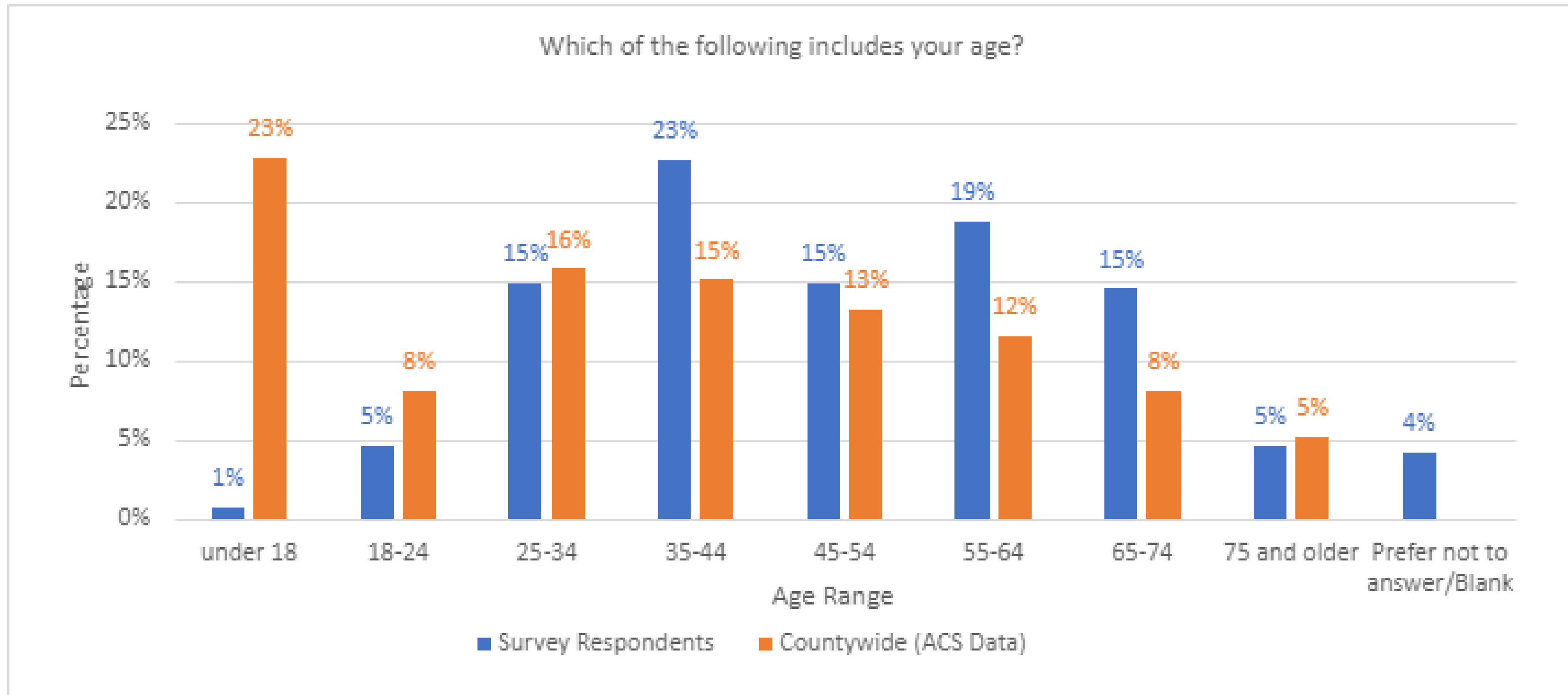


# → Survey participants – race or ethnicity





# → Survey participants – age



## → Public comment summary

- Majority of respondents (over 60%) are likely to use transit regularly in the future
- More frequent, direct or express transit, reduced service fragmentation and improved access would encourage respondents to use transit more
- Greater interest in connecting to recreational opportunities, work, other transit, and shopping
- Universal pass, coordinated planning tools and stops would encourage respondents to use cross-county services

# → Public comment summary

## What would encourage you to use transit more frequently? (Select all that apply)

	ONLINE SURVEY		PAPER SURVEY		COMBINED	
	Total	%	Total	%	Total	%
More Community Connector shuttle services	54	11.0%	26	9.2%	80	10.3%
More frequent transit service	73	14.9%	26	9.2%	99	12.8%
Improve connections among services operated by different transit agencies	57	11.7%	39	13.7%	96	12.4%
More comfortable ways to walk to transit	55	11.2%	46	16.2%	101	13.1%
More comfortable ways to bike to transit	41	8.4%	34	12.0%	75	9.7%
Better and more Park-and-Ride facilities	39	8.0%	37	13.0%	76	9.8%
More direct or express transit service	80	16.4%	40	14.1%	120	15.5%
Expand service hours to better serve work shift times	39	8.0%	22	7.7%	61	7.9%
Other	51	10.4%	14	4.9%	65	8.4%
<b>Total</b>	<b>489</b>	<b>100%</b>	<b>284</b>	<b>100%</b>	<b>773</b>	<b>100%</b>

# → Public comment summary

## What destinations do you most need to access with transit? (Select all that apply)

	ONLINE SURVEY		PAPER SURVEY		COMBINED	
	Total	%	Total	%	Total	%
Connect to work	81	19.7%	48	19.4%	129	19.6%
Connect to area schools	20	4.9%	17	6.9%	37	5.6%
Connect to parks, recreation and destinations	90	21.9%	51	20.6%	141	21.4%
Connect to shopping	61	14.8%	42	16.9%	103	15.6%
Connect to and other transit providers	68	16.5%	50	20.2%	118	17.9%
Connect to other essential services	62	15.1%	27	10.9%	89	13.5%
Connect to affordable housing	13	3.2%	12	4.8%	25	3.8%
Other	16	3.9%	1	0.4%	17	2.6%
<b>Total</b>	<b>411</b>	<b>100%</b>	<b>248</b>	<b>100%</b>	<b>659</b>	<b>100.0%</b>

# → Public comment summary

## What would encourage you to use transit more frequently? (Select all that apply)

	ONLINE SURVEY		PAPER SURVEY		COMBINED	
	Total	%	Total	%	Total	%
More Community Connector shuttle services	54	11.0%	26	9.2%	80	10.3%
More frequent transit service	73	14.9%	26	9.2%	99	12.8%
Improve connections among services operated by different transit agencies	57	11.7%	39	13.7%	96	12.4%
More comfortable ways to walk to transit	55	11.2%	46	16.2%	101	13.1%
More comfortable ways to bike to transit	41	8.4%	34	12.0%	75	9.7%
Better and more Park-and-Ride facilities	39	8.0%	37	13.0%	76	9.8%
More direct or express transit service	80	16.4%	40	14.1%	120	15.5%
Expand service hours to better serve work shift times	39	8.0%	22	7.7%	61	7.9%
Other	51	10.4%	14	4.9%	65	8.4%
<b>Total</b>	<b>489</b>	<b>100%</b>	<b>284</b>	<b>100%</b>	<b>773</b>	<b>100%</b>

# → Public comment summary

## What changes would encourage you to use cross county services? (Select all that apply)

Asked online only	ONLINE SURVEY	
	Total	%
More transit connections to cross-county services	55	13.0%
More frequent cross-county service trips	41	9.7%
Better coordinated stops to make transfers more convenient	56	13.5%
Universal pass program among transit providers	78	18.5%
Reduced fares to destinations like the Coast	51	12.1%
Better marketing	43	10.2%
Coordinated planning tools and scheduling	74	17.5%
The system works well for me as is	23	5.5%
Other	0	13.0%
<b>Total</b>	<b>421</b>	<b>100%</b>





# Public comment summary

## Do you agree with the proposal for expanding community-connector shuttles?

- Majority didn't disagree with tiers

"These seem like they cover the needs."

"I am impressed at the scope of the system and enhancements, and no other opportunities come to mind."

## Are there other opportunity areas you would like to see considered for future community-connector shuttle services?

"Better connectivity between Intel Jones Farm campus and the light rail."

"...add services to Cooper Mountain- North and South."

"...residential neighborhoods north of Hwy 26 to Sunset Transit Center."

"A ride connect that can be hailed using a cell phone, like a ride share."

"We need transit in the Minter Bridge rd area to the MAX and to shopping and medical appts."

"Any area in the county where low-income families live should have priority (equity!)"



# FY2023-2025 STIF fund and revenue forecast

Source	Total Biennium
Outside TriMet District (STIF formula funds)	~\$840,000
Regional Coordination	~\$5,801,000
Carry forward + overage	~\$439,000
STIF Discretionary grant/other competitive	TBD
Total	~\$7,080,000

- \* 115% of ODOT August 2022 forecast, assumes 55/45 split with SMART Outside TriMet District
- Overage represents additional revenue generated that exceeds 22/23 budgeted funding
- Carry forward represent anticipated 22/23 unspent funds
- *Regional Coordination funding is allocated by TriMet's HB2017 Advisory Committee*



# STIF formula fund budget proposal - DRAFT

## Program

### westLink

- Add service to meet demand

### Rural Demand Response

- Continue to make service available to general public

### Interregional Coordination

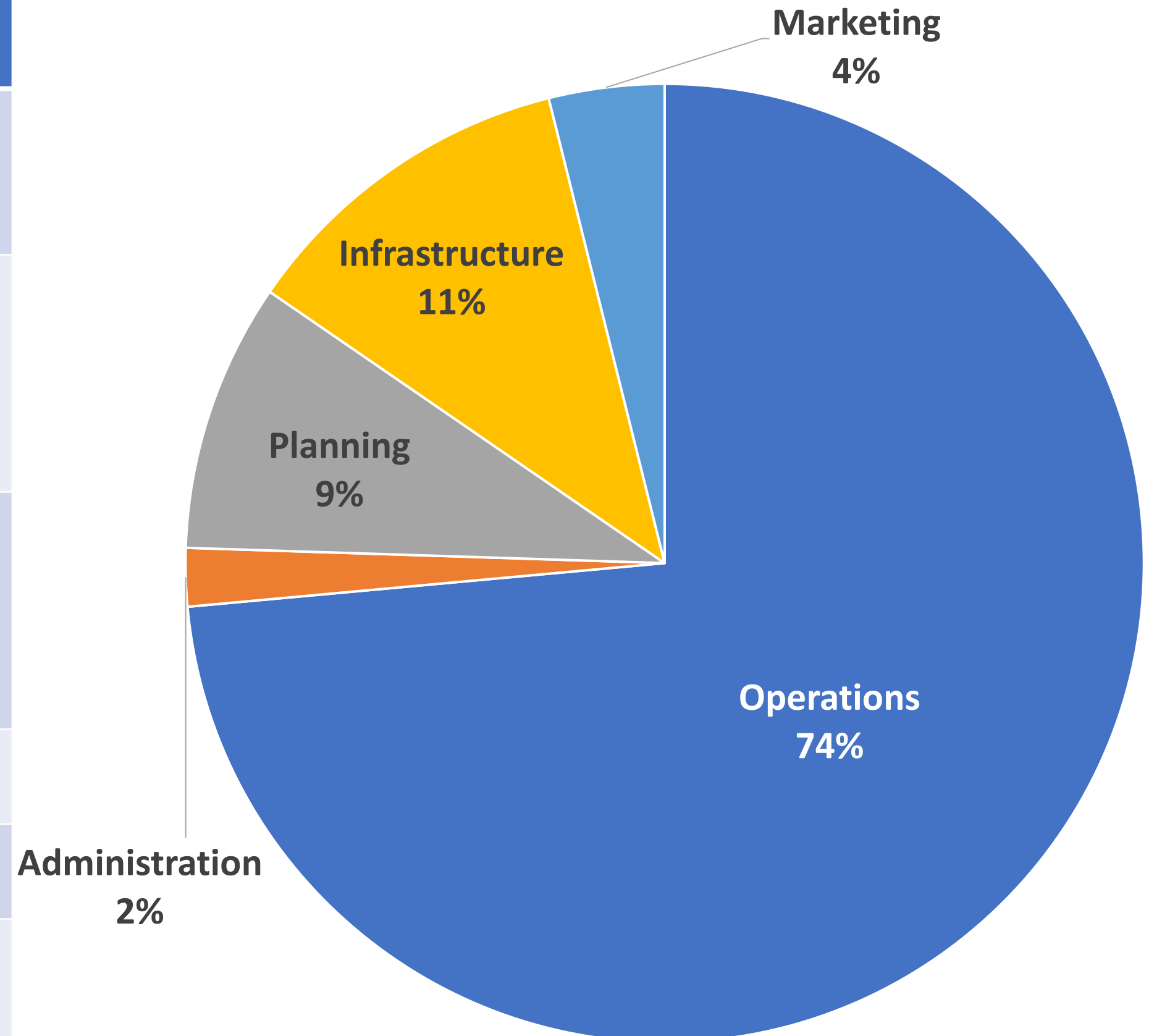
- Better coordinated marketing and trip planning

### Rural Workforce Shuttle

### Ride Connection marketing

### Infrastructure

- Stop improvements and EV charging





# Regional Coordination proposal - DRAFT

## Program

### Maintain current/committed

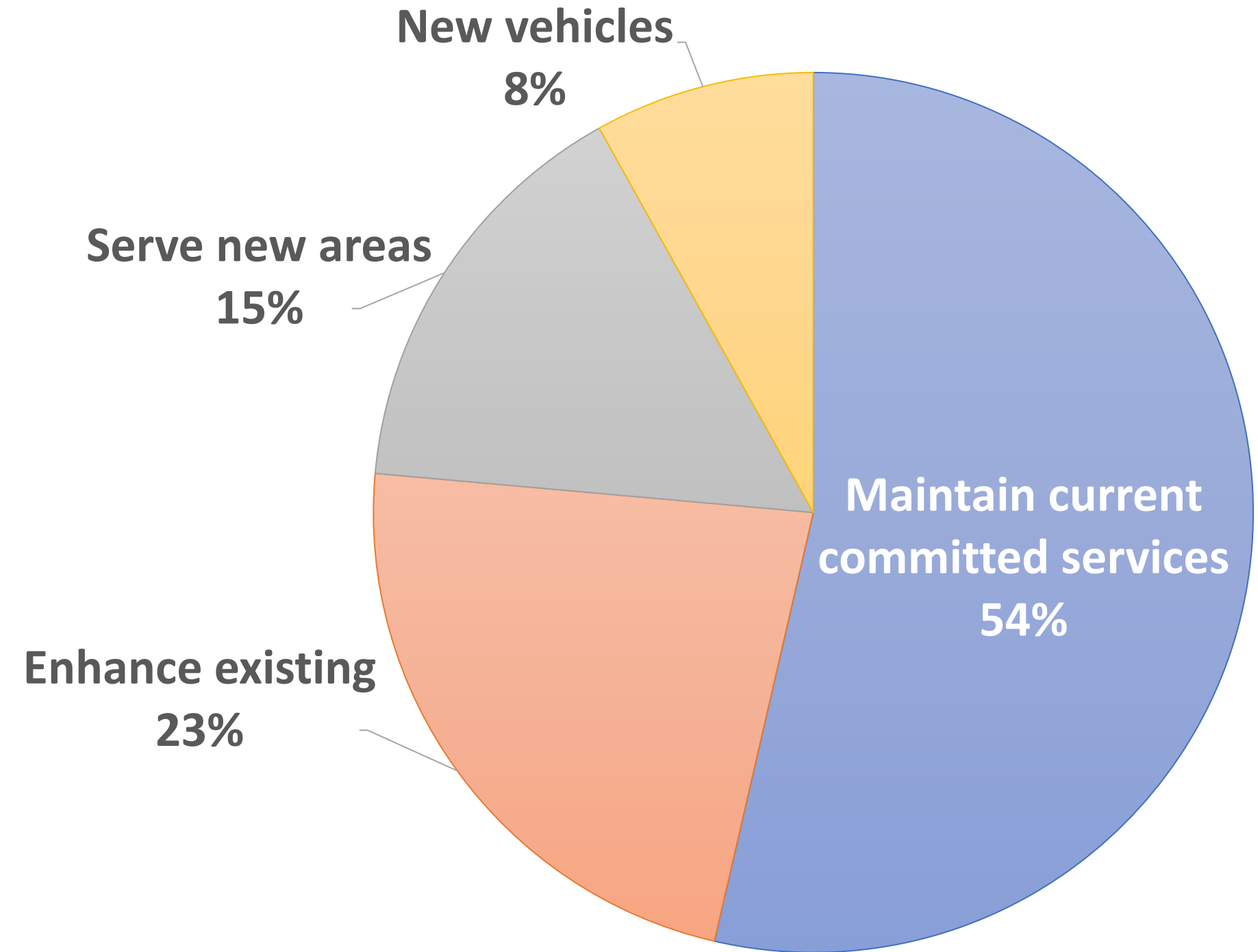
- GroveLink, North Hillsboro, Tualatin shuttle (Red and Blue)

### Enhance

- Cornelius weekday
- North Hillsboro deviation/peak
- Tualatin Green line-grant funded FY23

### Serve new areas

Four new vehicles



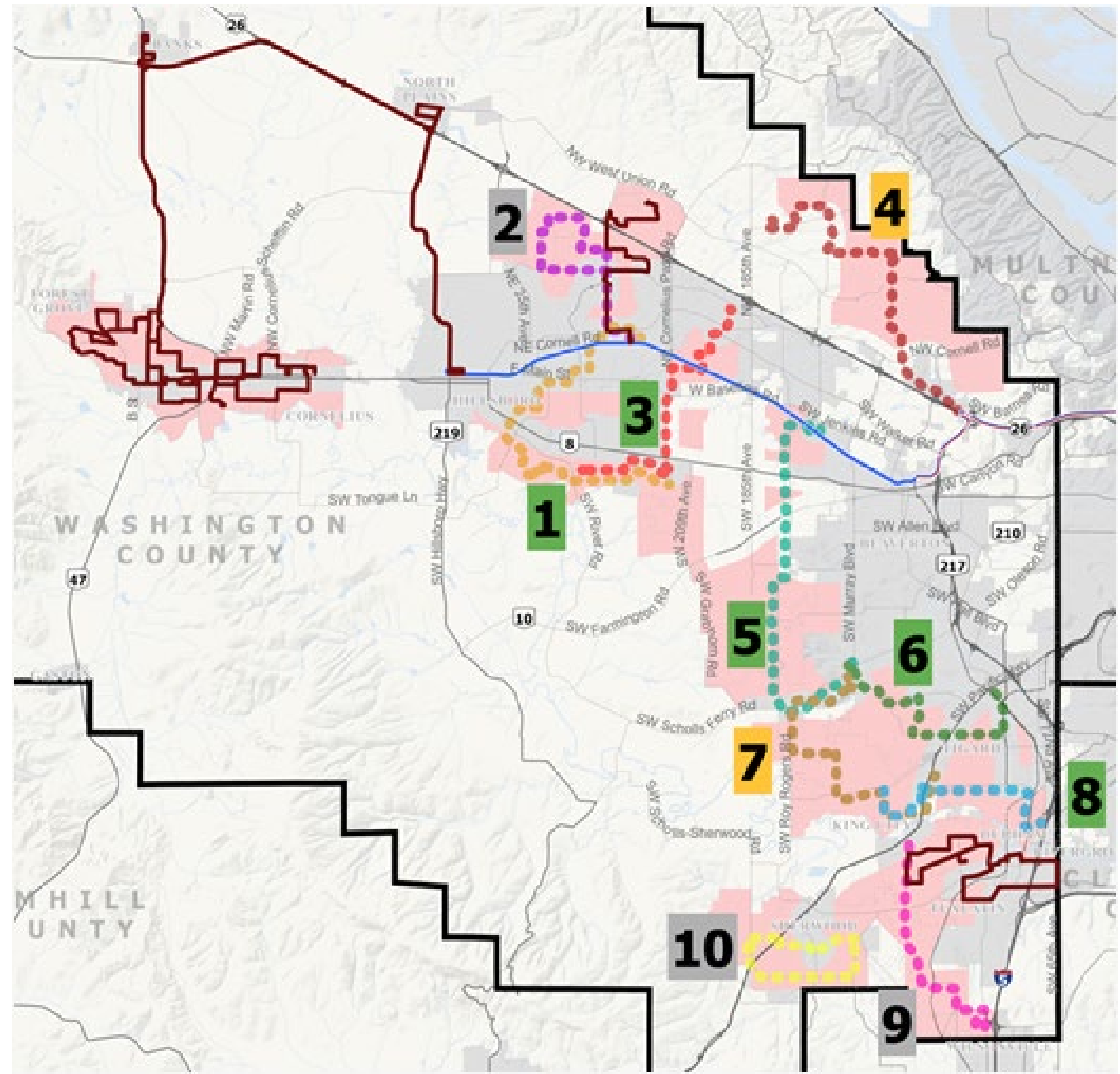
# → Serve new areas shuttle service concepts

Near-Term	
1	Witch Hazel/Orenco
3	South Hillsboro/Tanasbourne
5	South Beaverton/Cooper Mountain
6	Central Tigard
8	Durham/King City
Mid-Term	
4	Bethany/Cedar Mill
7	River Terrace/Bull Mountain
Long-Term	
2	Northwest Hillsboro
9	Basalt Creek
10	Sherwood

 Service Concepts

 Analysis Areas

 Existing Community Connector Shuttles







# Forward Together service proposal overlay

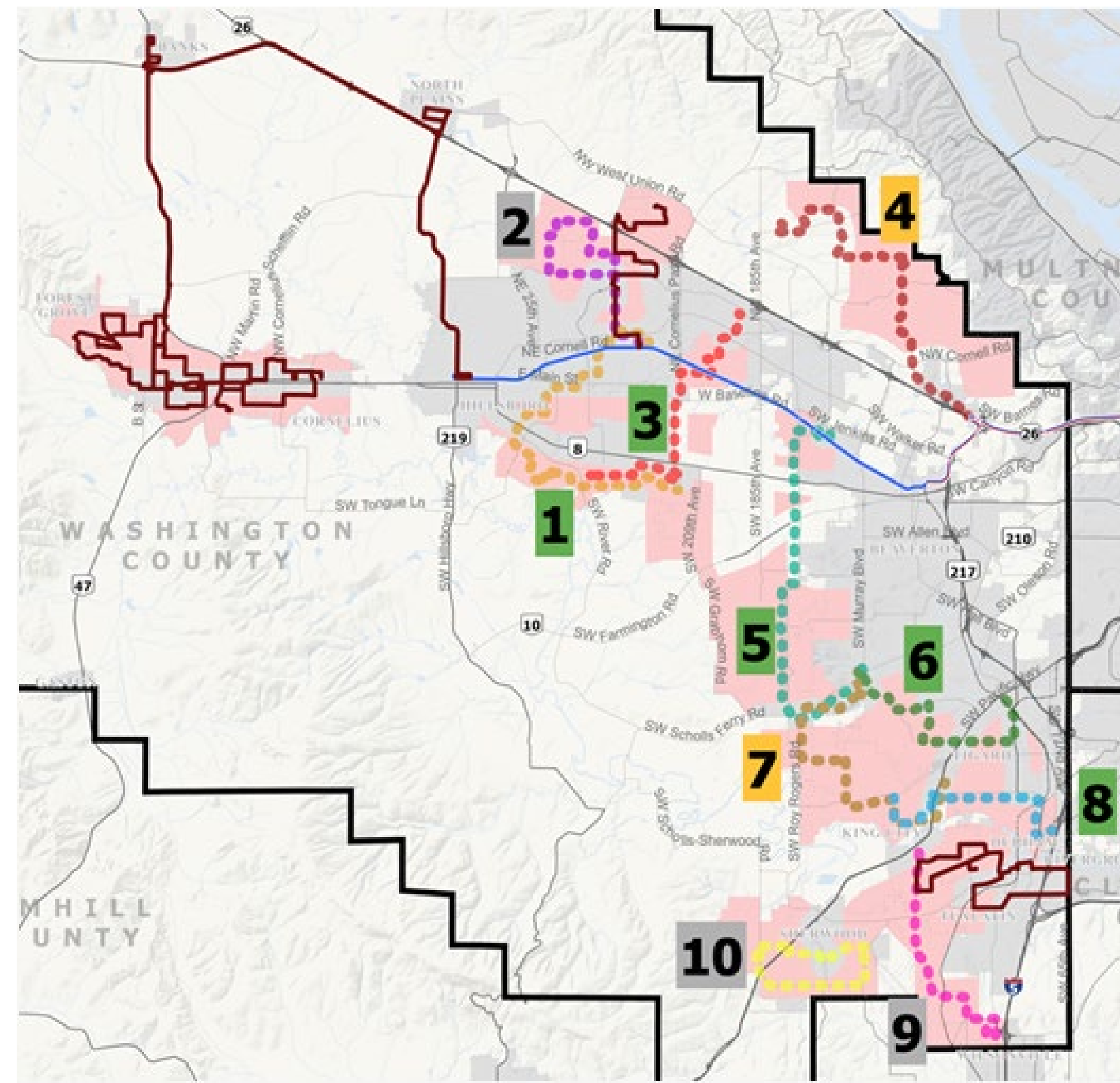
Near-Term	
1	Witch Hazel/Orenco
3	South Hillsboro/Tanasbourne
5	South Beaverton/Cooper Mountain
6	Central Tigard
8	Durham/King City
Mid-Term	
4	Bethany/Cedar Mill
7	River Terrace/Bull Mountain
Long-Term	
2	Northwest Hillsboro
9	Basalt Creek
10	Sherwood

TriMet service
No
Mostly
Partially
Mostly
No
No
No
No
Partially
No
No

Service Concepts

Analysis Areas

Existing Community Connector Shuttles







# Serve new areas - priority opportunities

Rank	Opportunity	Justification
1.	Durham/King City	<ul style="list-style-type: none"><li>• Scores higher in low-income households, low-wage jobs, older adults</li><li>• Restructure and leverage King City Ride-About</li><li>• Candidate for STF funding</li><li>• Serve Tigard High School, affordable housing and essential destinations</li></ul>
2.	PCC/Bethany/Cedar Mill/Sunset TC	<ul style="list-style-type: none"><li>• Scores higher in youth and affordable housing</li><li>• Replace Line 50 service</li><li>• PCC Rock Creek Campus as anchor</li></ul>
3.	South Beaverton	<ul style="list-style-type: none"><li>• Scores higher in low-income households, low-wage jobs, older adults</li><li>• TriMet Forward Together proposal includes service to priority areas covered by route concept</li></ul>
4.	Witch Hazel/Orenco	<ul style="list-style-type: none"><li>• Scores higher in 4 of 5 equity criteria</li><li>• Continues to be a gap in TriMet Forward Together proposal</li></ul>
5.	River Terrace/Bull Mountain	<ul style="list-style-type: none"><li>• Scores higher in low-income households and older adults</li><li>• Continues to be a gap in TriMet Forward Together proposal</li></ul>
6.	Basalt Creek	<ul style="list-style-type: none"><li>• Rapid job growth in area</li></ul>
7.	Sherwood	<ul style="list-style-type: none"><li>• Scores higher in youth</li></ul>
8.	Northwest Hillsboro/Jackson School Rd/25 <sup>th</sup> Ave/Brookwood	<ul style="list-style-type: none"><li>• Needs further evaluation</li><li>• Potential restructure of North Hillsboro service if TriMet Forward Together proposal is implemented</li></ul>

# → Serve new areas proposal - DRAFT

## Staff recommendation

- Advance eight as near-term opportunities in Transit Development Plan
- Align proposal with TriMet's Forward Together service plan
- Fund two of top three opportunity areas through Regional Coordination
  - King City to Bridgeport Village
  - Bethany/Cedar Mill/PCC
  - South Beaverton
- Seek discretionary grant for one



# Discretionary grant ideas

Project	Description
1. On-demand micro-transit pilot	<ul style="list-style-type: none"><li>• On-demand rideshare service that provides point-to-point service within a transit-deficient area</li><li>• Schedule a ride online or through a mobile app, then track a driver's arrival, just like other rideshare services</li><li>• Builds from technology upgrades implemented through a prior grant funded project</li></ul>
2. Stop improvements 2.0	<ul style="list-style-type: none"><li>• Both inside and outside TriMet service boundary</li><li>• ADA-compliant landing pads</li><li>• Shelters, benches, or seats</li><li>• Signs, wayfinding</li></ul>
3. Cross-county marketing and service plan	

## → Next steps

### Action (Fall, 2022)

#### Washington County Board of Commissioners

- October 11 work session
  - Present recommendation
  - Approve FY 2023-25 STIF priorities and advance to TriMet
- December
  - Adopt updated Transit Development Plan

#### TriMet HB2017 Advisory Committee

- Recommend STIF priorities inside TriMet district



Land Use & Transportation  
[www.co.washington.or.us](http://www.co.washington.or.us)