



Washington County Transit Committee

October 14, 2020



Agenda

- Public comment survey results to date
- Rural service needs and alternatives
- Regional coordination service needs and alternatives
- STIF Discretionary Grants
- Ride Connection outreach
- Public comment
- Next steps



Goal today

- Solicit input on additional outreach opportunities
- Solicit input on priorities for both the near term 2 year biennium to submit for funding and input on longer term 5 year improvements

Public comment summary

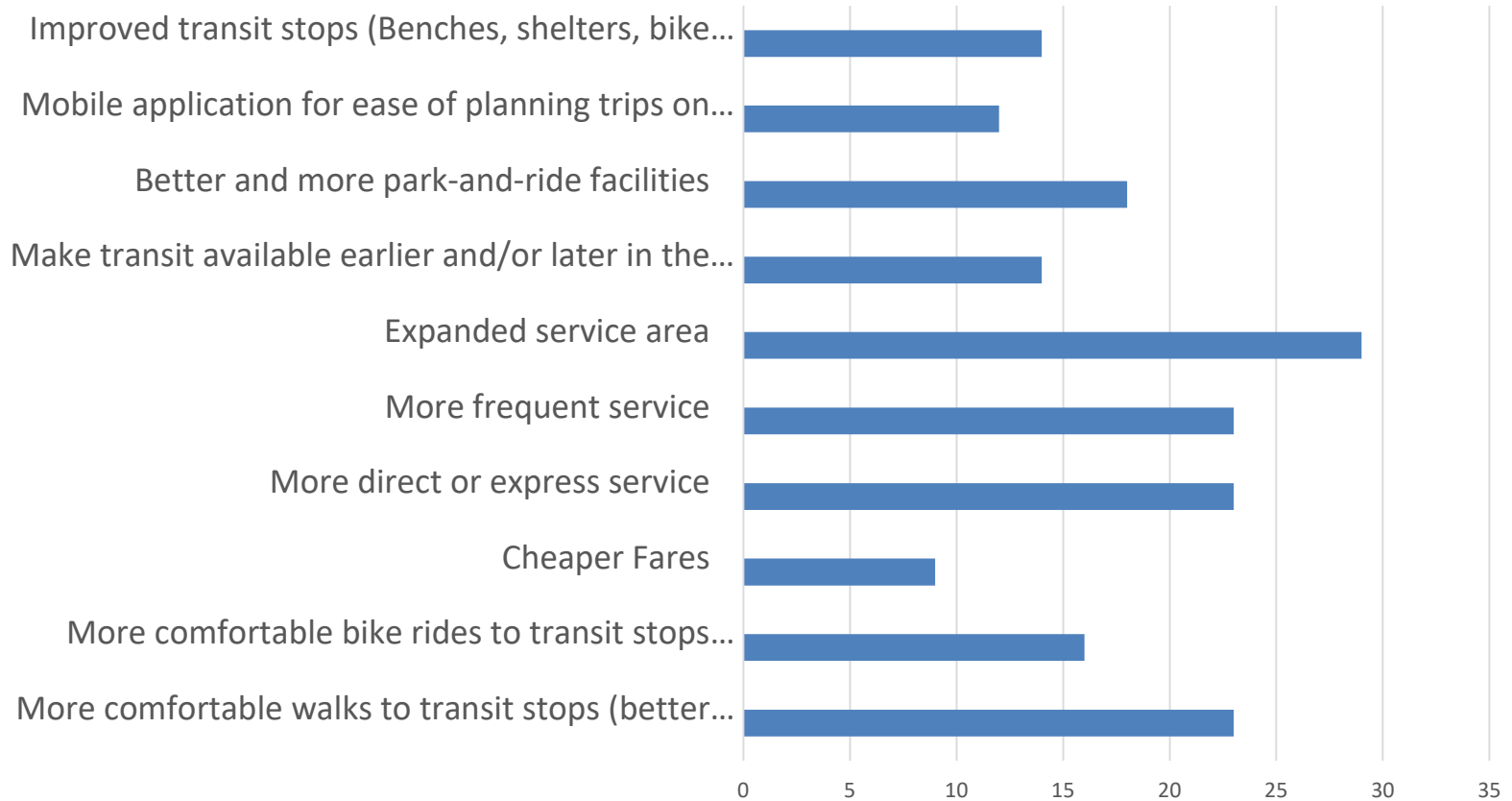
- 85 responses to date (81 English, 4 Spanish)
- Majority of respondents used transit less than 1-3 time/month pre-COVID
- 55% of respondents say they are neutral or likely to use Ride Connection/transit in future
- Expanded service is top ranking priority

“I did not know there were 2 transit stops in Banks until this survey.”

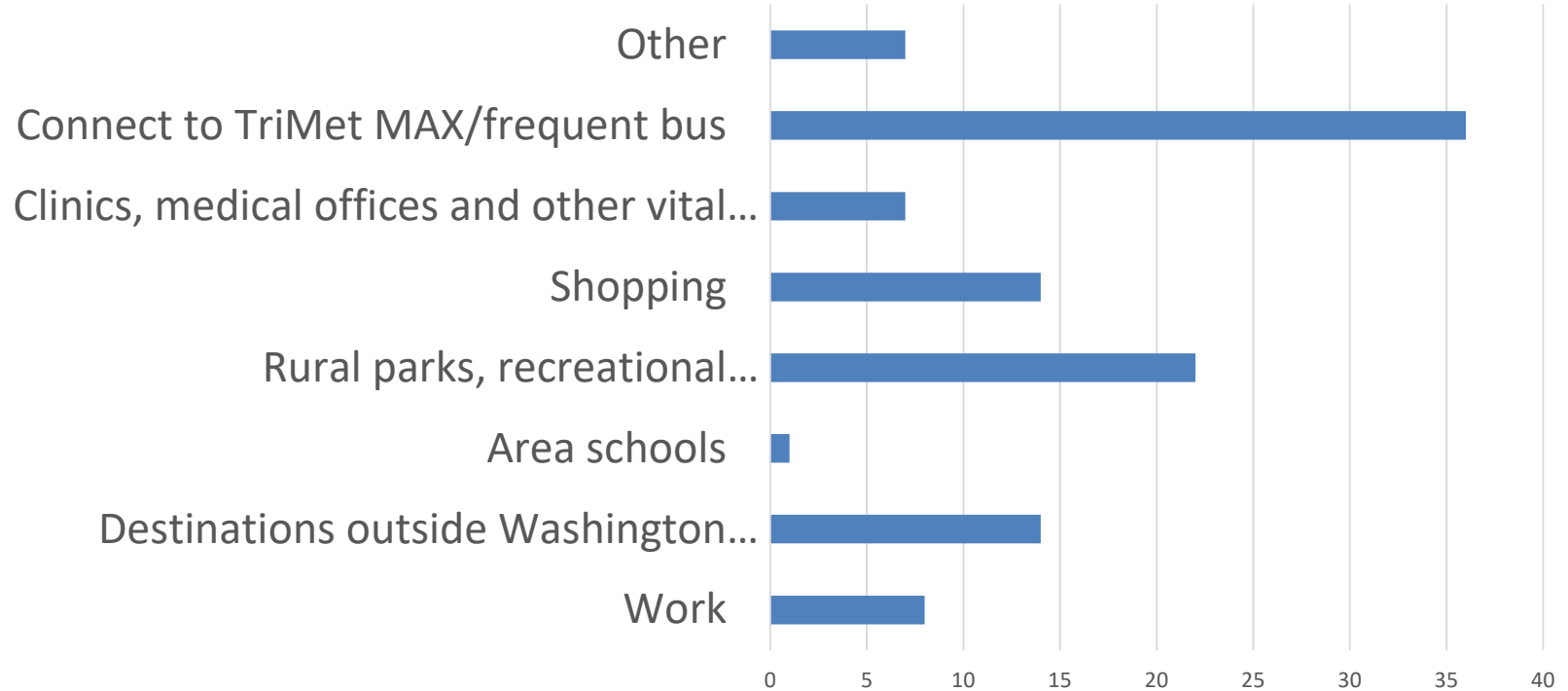
¡Ayuda!

“Absolutely no public transportation near southern Cornelius.”

What would encourage you to use transit more frequently?



To which of the following locations would you like to travel using public transportation?



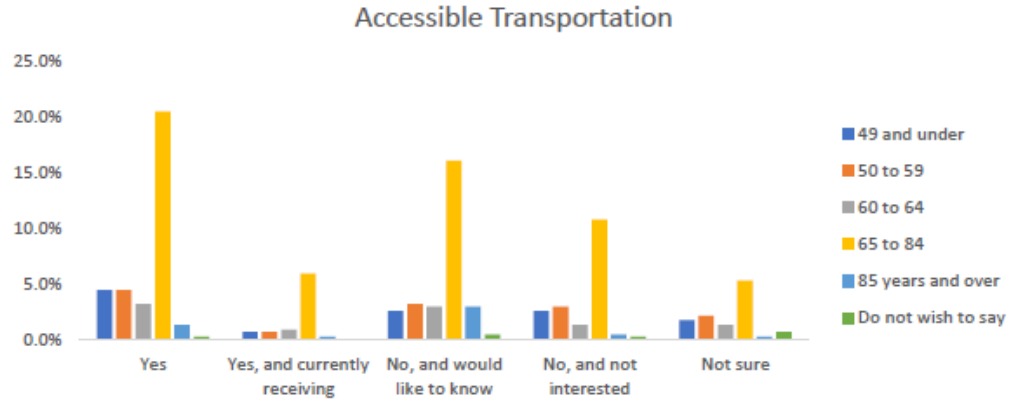


Outreach

- Social media
- Media buys (Spanish language)
- County and partner interested parties lists
- CPOs and other community newsletters
- Business recovery centers
- Other? (we'd like to document your efforts too)

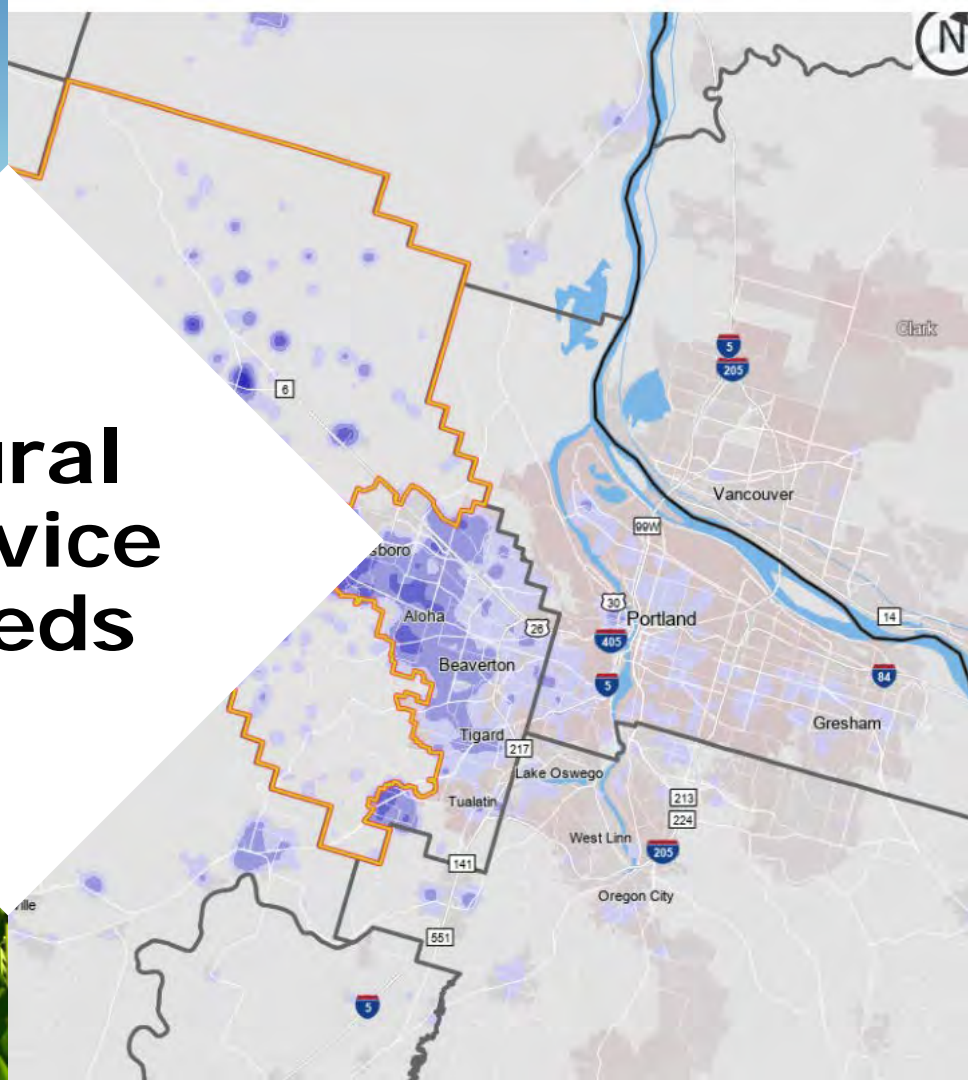
DAVS survey results show:

- Accessible transportation is #2 need
- Over 15% of people (65 – 85 yr old) would like info about accessible transportation
- Sources of information most useful: family and friends, online, health care provider, television.





Rural service needs



Infrastructure and capital needs

Bus stops

- ADA-compliant landing pads
- Shelters, benches, or seats
- Signs, wayfinding

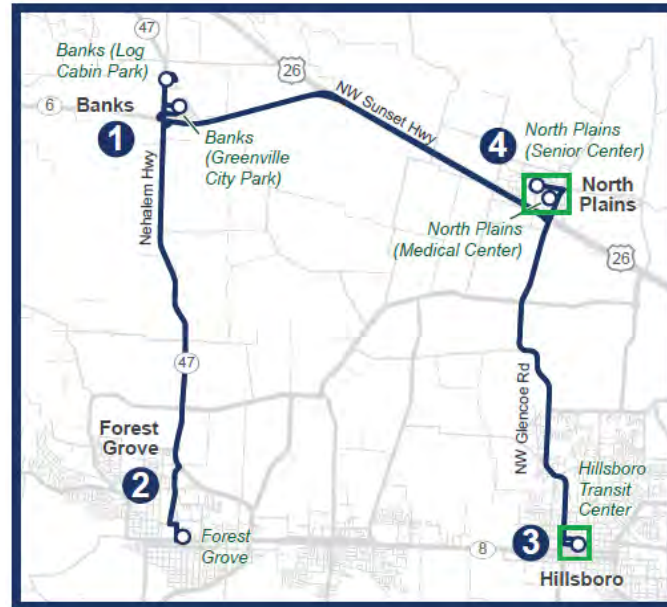
Other capital

- Trip planning platform
- Vehicles
- EV charging infrastructure



westLink

- Add weekend service
- More frequent weekday service
- Modify route



westLink

EAST Bound

RC	CC	TM	TM	TM	TM
Forest Grove Senior Center (20037 Douglas)	Banks: Greenville City Park (at NW Trellis Ct.)	Banks: Log Cabin Park (Main & Sunset)	North Plains: (Pacific & Glencoe)	North Plains: Senior Center (Commercial & 314th)	Hillsboro Transit Center
6:55	7:10	7:15	7:27	7:30	8:00
12:10	12:25	12:30	12:42	12:45	1:15
3:10	3:25	3:30	3:42	3:45	4:05
5:25	5:40	5:45	5:57	6:00	6:20

WEST Bound

TM	TM	CC	TM	RC	RC
Hillsboro Transit Center	North Plains: Senior Center (Commercial & 314th)	North Plains: (Pacific & Glencoe)	Banks: Log Cabin Park (Main & Sunset)	Banks: Greenville City Park (at NW Trellis Ct.)	Forest Grove Senior Center (20037 Douglas)
8:00	8:12	8:15	8:30	8:35	8:55
1:15	1:27	1:30	1:45	1:50	2:10
4:05	4:22	4:25	4:40	4:45	5:05
6:20	6:32	6:35	6:50	6:55	7:15

Rural work force shuttle

- More service in Gaston, south of Forest Grove/Hillsboro
- New service north of Forest Grove/Hillsboro
- Serve more businesses in Forest Grove
- Add weekend service



Source: Wikimedia



Source: Unite Oregon 12

Marketing

- Lack of awareness
- Better coordination between service providers
- Trip planning tools



Inter-regional coordination

- Add stops
- Add service
- Better coordinate stops

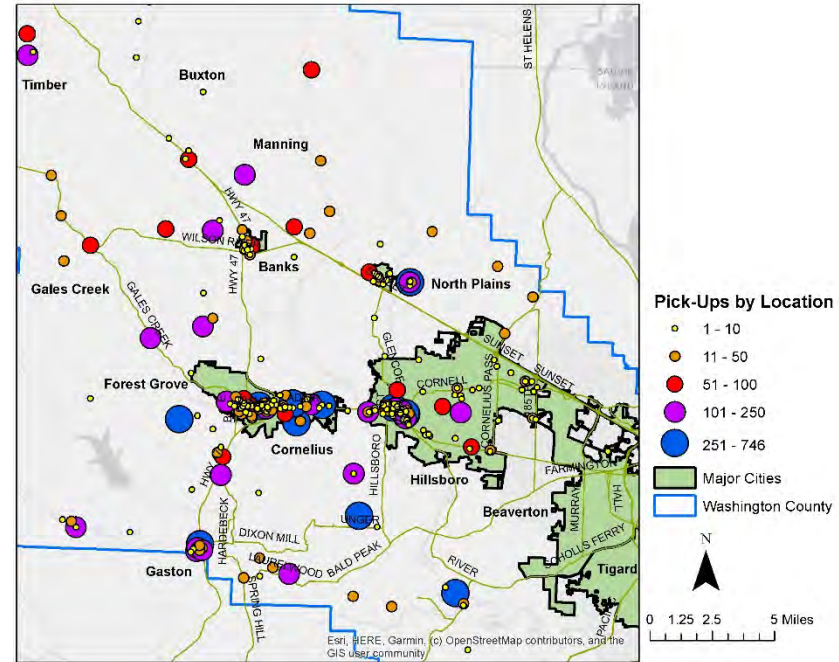


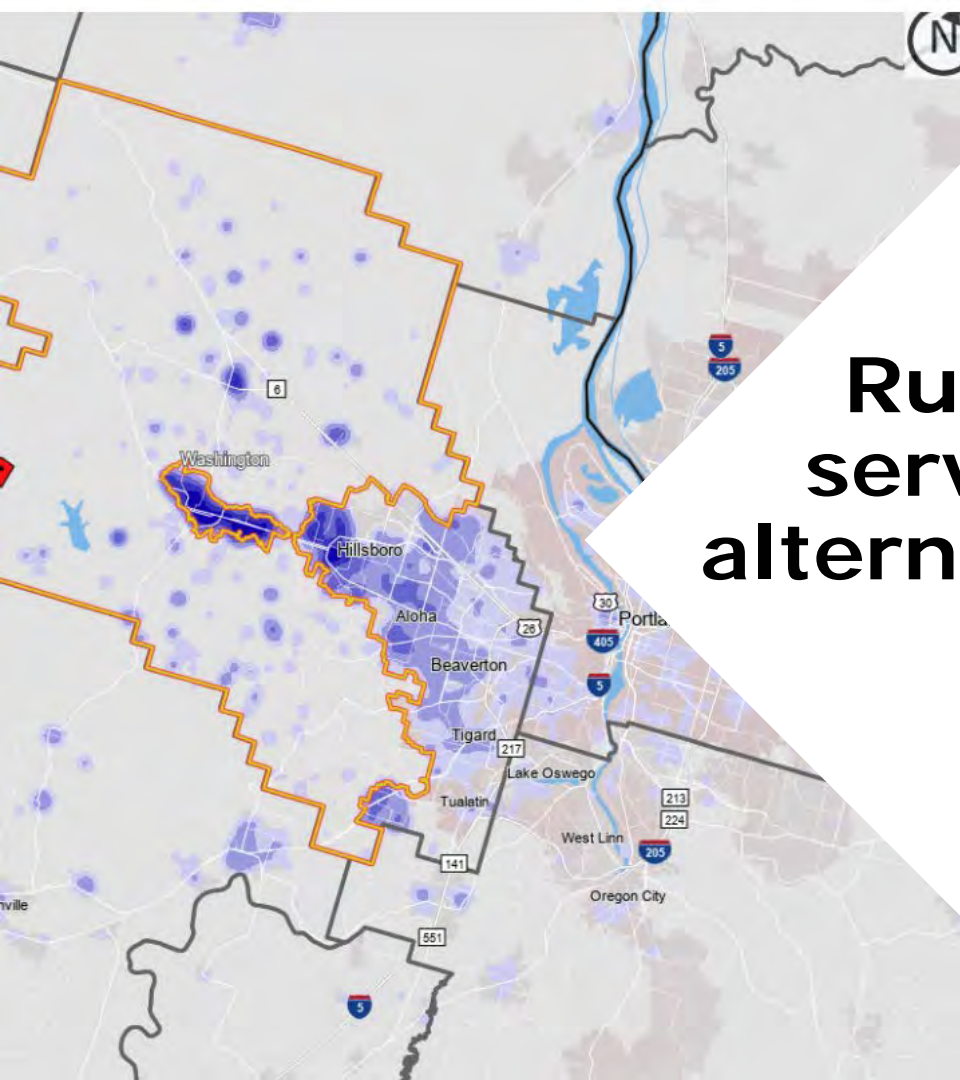
**Yamhill County
Transit Area**

Other needs

- Access rural recreation
- Expand coverage to respond to demand

**Rural Washington County Door-to-Door Pick-Ups
Jan. 1 - Dec. 31, 2019**





Rural service alternatives



FY 21 Budget - Rural

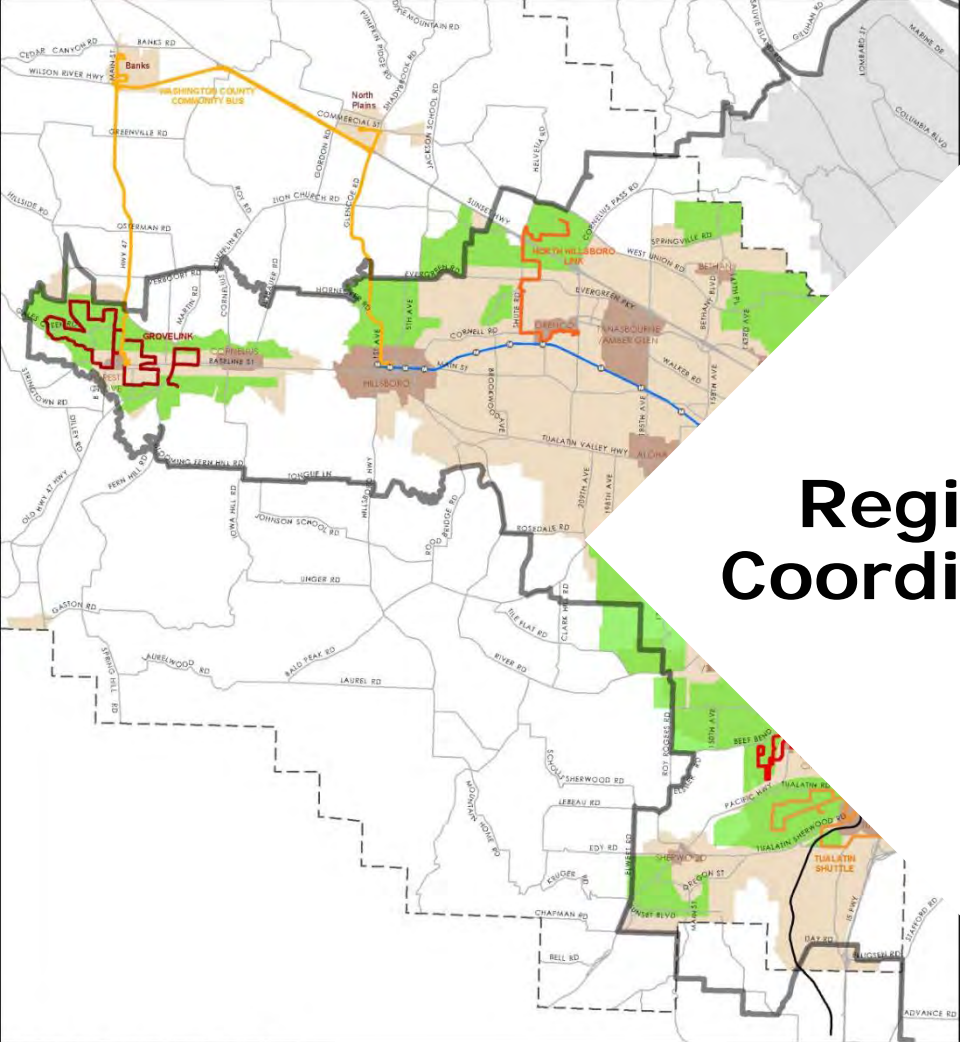
Program	Description	Budget
WestLink	2 additional midday runs	\$98,000
Demand Response	Expand service	\$103,000
Interregional Coordination	Connections with Tillamook, Columbia and Yamhill County providers	\$23,500
Rural Workforce Shuttle	Operations – new service	\$50,000
Marketing	Traditional and digital marketing campaign	\$15,000
Administration	Review program records, audit financial records	\$10,000
Total		\$299,500

Rural alternatives

Program	FY22-23	FY24+
westLink	X	
Demand Response		
Interregional Coordination	XXX Expand and promote, reflect survey – connect to TriMet, adjacent counties, fare reciprocity	
Rural Workforce Shuttle	XX Need to be implemented and monitor, improved access to jobs	Plan to expand/adjust
New pilot* * <ul style="list-style-type: none"> • New service to respond to demand • Serve parks and recreation areas • Agritourism connections • Link Seniors/low-income families to FDNP farm sites 	Quality of life, near-term should focus on safety net	X
Capital and infrastructure Stop, vehicles, technology	XX Improved trip planner, seamless across devices	
Marketing	XXXX continuous and with new service, additional language translations	

* *Planning and feasibility study needed





Regional Coordination



FY 21 Budget – Reg. Coord.

Program	Description	Budget
Operations	GroveLink, N. Hillsboro Link and Tualatin Shuttle	\$1,138,349
Marketing	Traditional and digital marketing campaign	\$15,000
Administration	Review program records, audit financial records	\$15,000
Total		\$1,168,349



Near-term (FY22-23)

- No new revenue
- Maintain planned services
- Seek additional revenue

Longer-term (FY24+) service alternatives

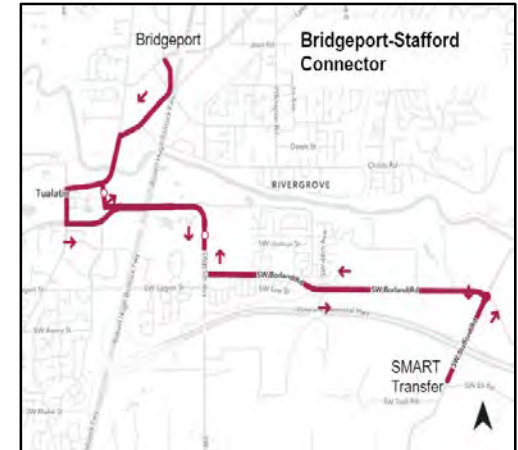
- Expand existing shuttles
 - Community circulator shuttle in Tualatin**
 - Further service expansion in Cornelius
- Add new service
 - South Beaverton, Copper Mountain, and Progress Ridge area
 - Metzger/Washington Square/Tigard industrial service **
 - South Hillsboro service**
 - North Bethany service**

– Map of shuttles

***Feasibility study needed*

STIF Discretionary proposals

Project	Cost
Community connector shuttle stop enhancements	\$325,000
I-205 Transit Corridor: Connecting Tualatin to Oregon City	\$862,650





Upcoming public comment

Ride Connection service enhancements

– Online survey

- Door to door expansion
- WestLink service
- GroveLink



Public Comment

- *Up to 3 minutes*



Next Steps

- Oct. 28
 - Review public comment
 - Seek recommendation for Board and submission to TriMet in November
 - project priorities for FY22-23 biennium