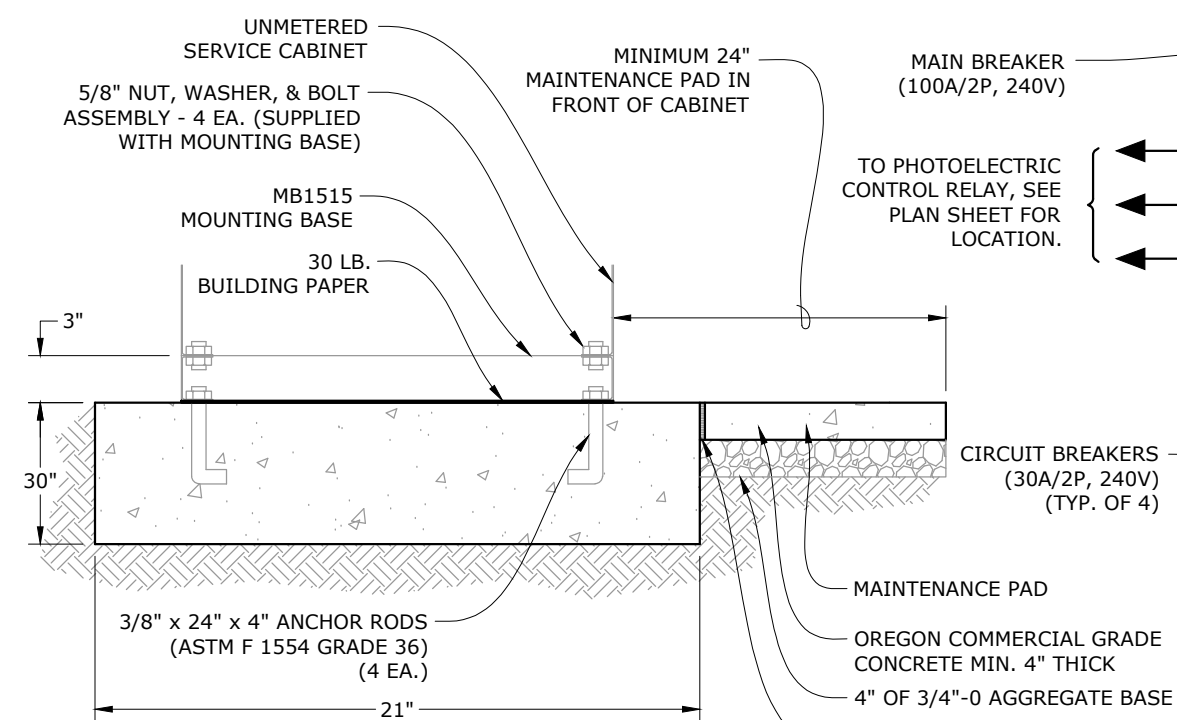


UNMETERED SERVICE CABINET FOUNDATION DETAIL

NOT TO SCALE

FOUNDATION NOTES:

1. USE OREGON COMMERCIAL GRADE CONCRETE PER SECTION 00440.
2. CAST CONCRETE AGAINST UNDISTURBED COMPACTED SUBGRADE.
3. ALL SCREWS, BOLTS, NUTS AND WASHERS SHALL BE GALVANIZED STEEL UNLESS NOTED OTHERWISE.



UNMETERED SERVICE CABINET FOUNDATION DETAIL

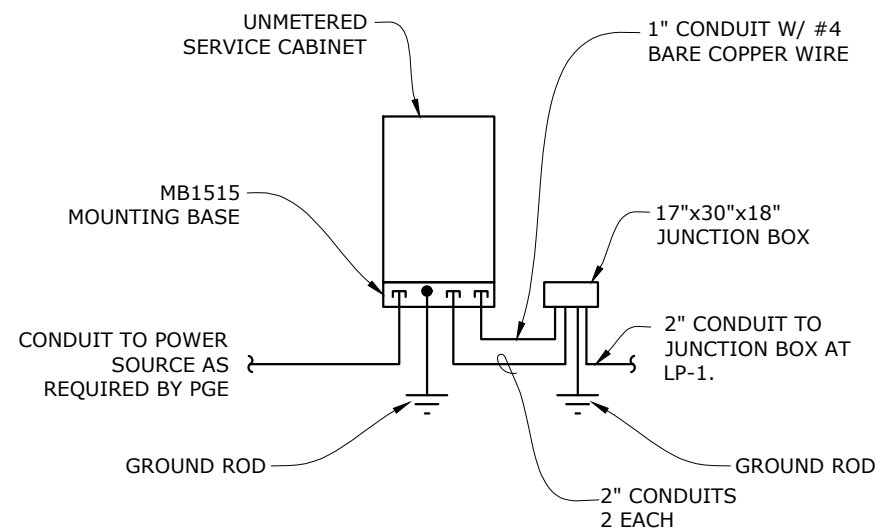
NOT TO SCALE

GENERAL NOTES:

1. THE UNMETERED SERVICE CABINET SHALL BE NEMA TYPE 3R, UL LISTED WITH PAD LOCKABLE DISCONNECT AND DISTRIBUTION SECTIONS.
2. THE FINISH OF THE UNMETERED SERVICE CABINET SHALL BE 316 STAINLESS STEEL.
3. THE UNMETERED SERVICE CABINET SHALL HAVE 1 EACH 100A 2-POLE MAIN BREAKER, 4 EACH 30A 2-POLE BRANCH BREAKERS, 4 EACH 30A 2-POLE LIGHTING CONTACTORS, AND 1 EACH 15A 1-POLE TEST SWITCH.
4. INSTALL MOUNTING BASE PER MANUFACTURER'S AND PGE'S RECOMMENDATIONS AND REQUIREMENTS.
5. FOLLOW NFPA 70E STANDARDS FOR ARC FLASH AND PROVIDE THE REQUIRED LABELING FOR THE SERVICE CABINET. ATTACH AVAILABLE FAULT CURRENT TO THE INSIDE OF THE CABINET WITH A PERMANENT LABEL.

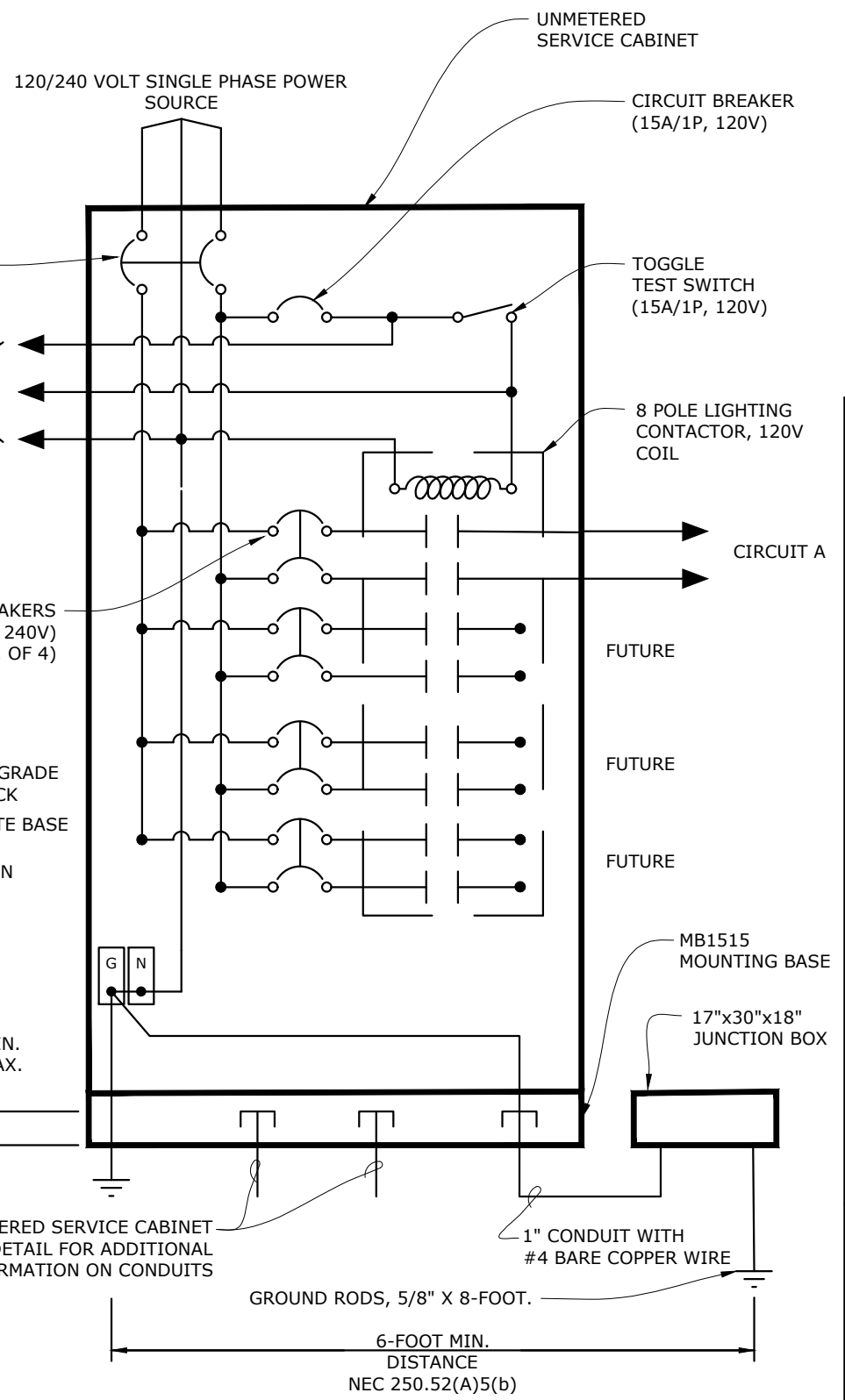
CONSTRUCTION NOTES:

1. INSTALL MIN. 3 FEET BEHIND FACE OF CURB PER AASHTO ROADSIDE DESIGN GUIDE 3.4.1.
2. ILLUMINATION CONDUITS SHALL HAVE A MINIMUM COVER OF 30 INCHES FROM THE FINISHED SURFACE UNLESS REQUIRED TO BE DEEPER BY PERMIT.



UNMETERED SERVICE CABINET DETAIL

NOT TO SCALE



UNMETERED SERVICE CABINET (USC) CIRCUIT DIAGRAM

NOT TO SCALE

ACCOMPANIED BY STANDARD DRAWING 6810, 6820, AND 6831

WASHINGTON COUNTY DEPARTMENT OF LAND USE & TRANSPORTATION ENGINEERING SECTION	UNMETERED SERVICE CABINET DETAILS	WASH. CO. #	6833
		EFFECTIVE DATE:	07/01/2024
PLOT STAMP: 06/27/24 2:18P NOAHL		CAD: 6833.DWG	