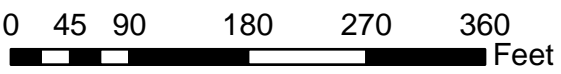


NOTE: NOISE ANALYSIS IS ONGOING. SOUND WALL LOCATIONS ARE TO BE DETERMINED

Esri, HERE, Garmin, © OpenStreetMap contributors, Washington County Geographic Infrastructure Group, Metro Resource Center

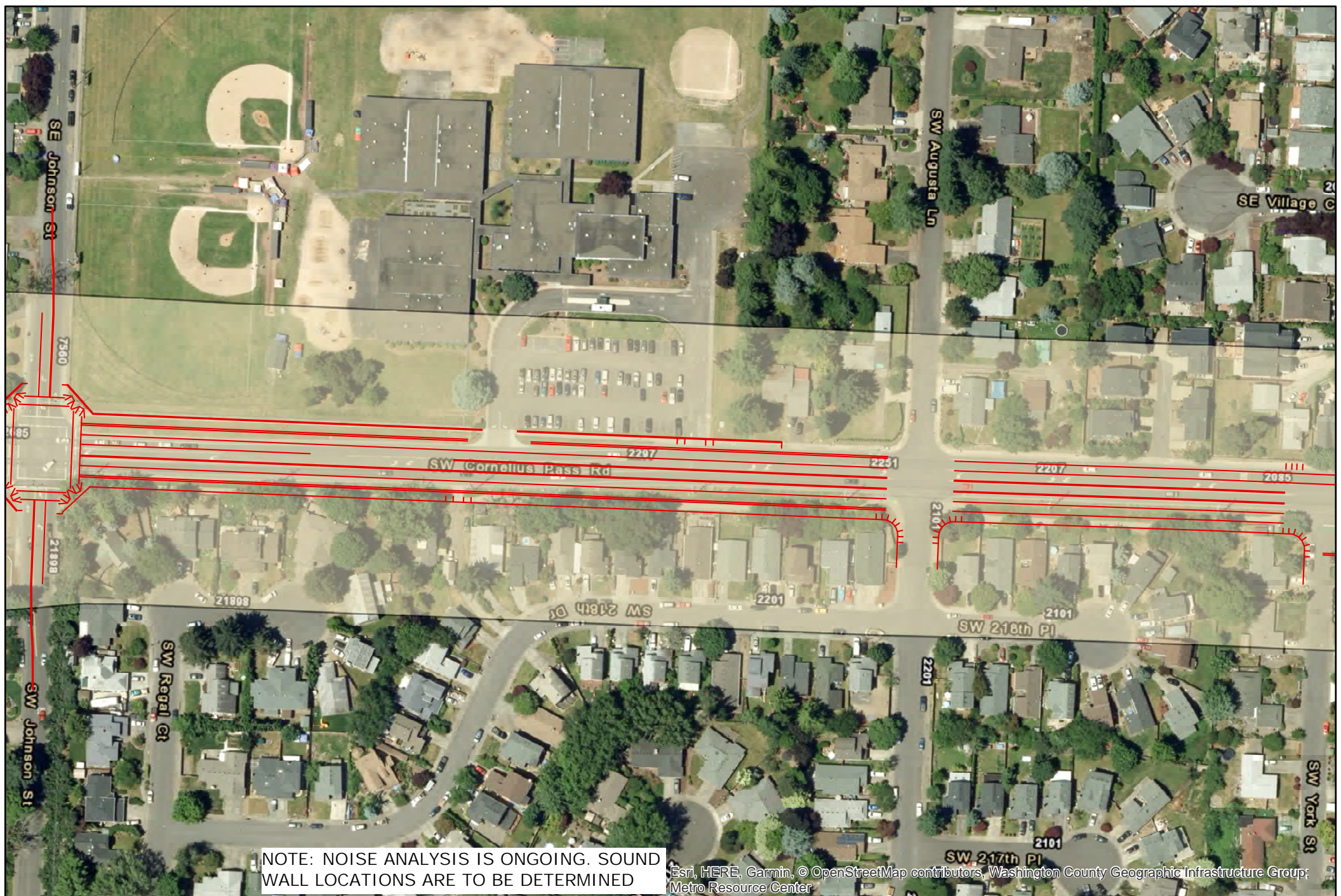
Legend

- Proposed Alignment
- Noise Evaluation Area



CORNELIUS PASS ROAD
Frances Street to Tualatin Valley Highway
 June 21, 2018

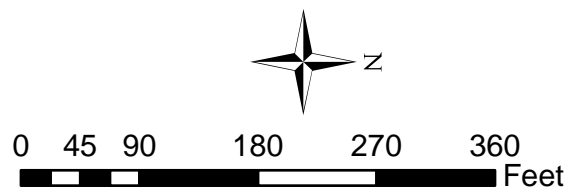




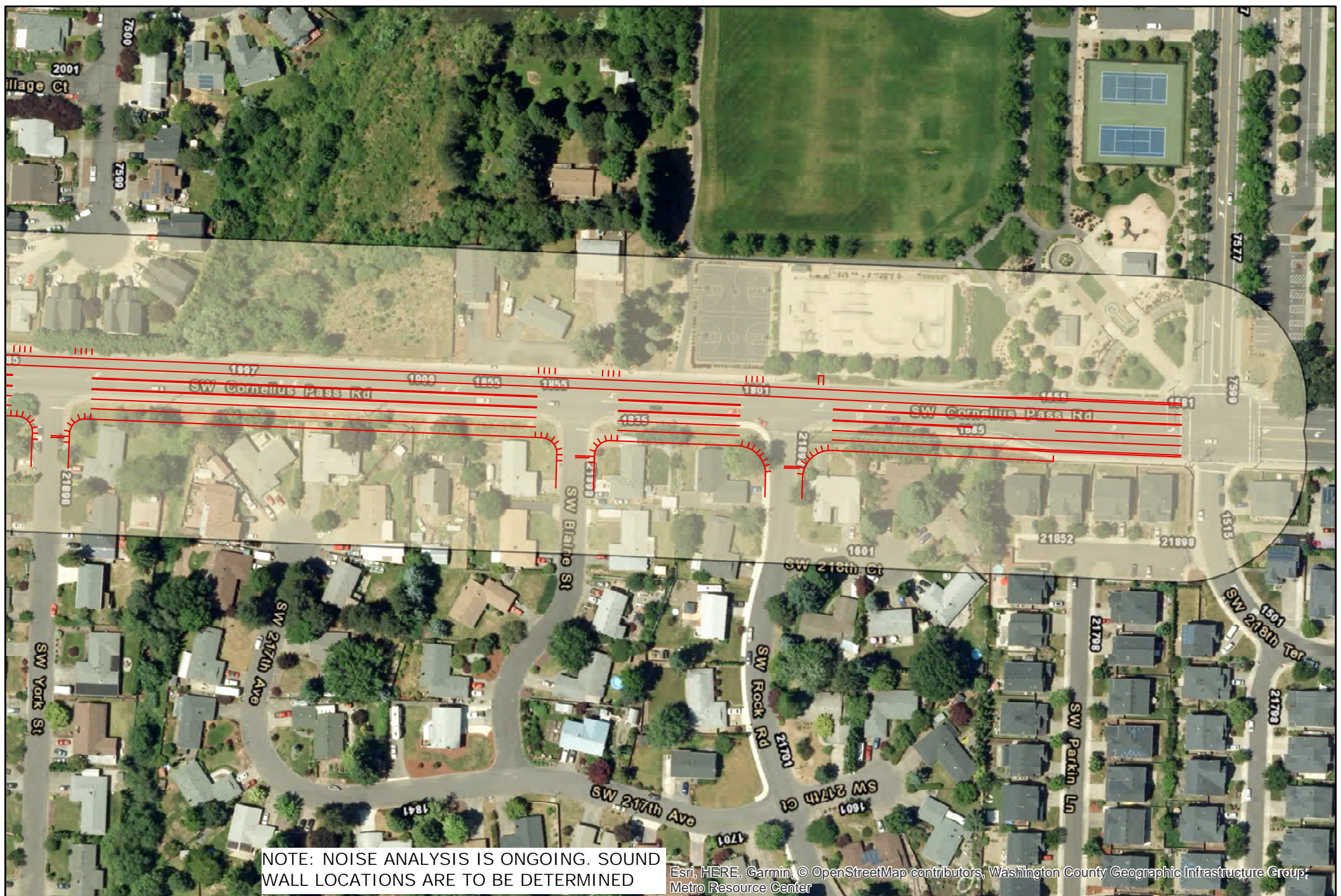
NOTE: NOISE ANALYSIS IS ONGOING. SOUND WALL LOCATIONS ARE TO BE DETERMINED

Esri, HERE, Garmin, © OpenStreetMap contributors, Washington County Geographic Infrastructure Group; Metro Resource Center

- Legend**
- Proposed Alignment
 - Noise Evaluation Area





CORNELIUS PASS ROAD
Frances Street to Tualatin Valley Highway
June 21, 2018




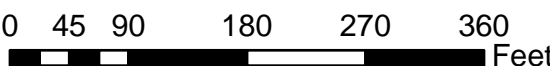
NOTE: NOISE ANALYSIS IS ONGOING. SOUND WALL LOCATIONS ARE TO BE DETERMINED

Esri, HERE, Garmin, © OpenStreetMap contributors, Washington County Geographic Infrastructure Group, Metro Resource Center

Legend

-  Proposed Alignment
-  Noise Evaluation Area

 N


 0 45 90 180 270 360 Feet

CORNELIUS PASS ROAD
Frances Street to Tualatin Valley Highway
June 21, 2018

