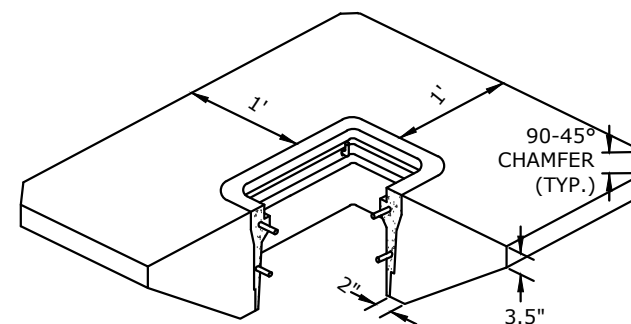


**TRAFFIC SIGNAL/ILLUMINATION JUNCTION BOX**

NOT TO BE USED IN TRAVEL LANES, SHOULDERS OR AREAS EXPOSED TO TRAFFIC.

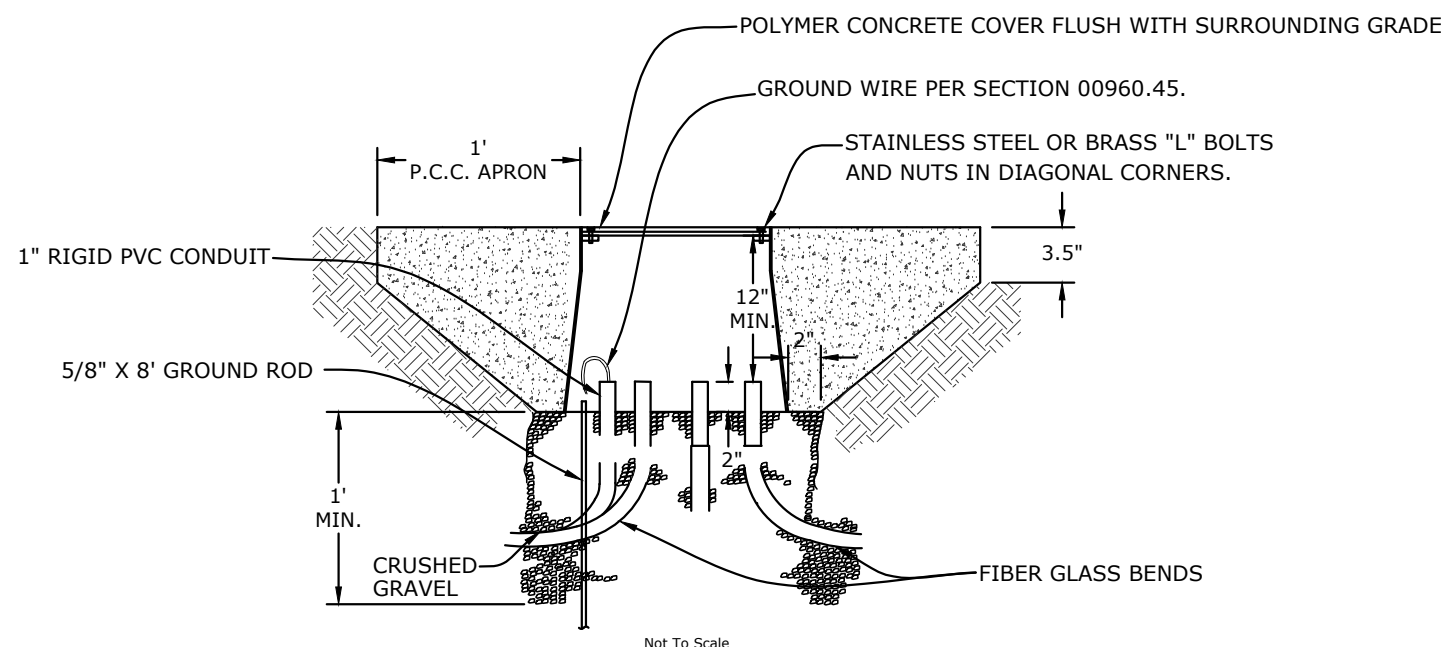


**CONCRETE APRON AROUND JUNCTION BOX**

(APPROX. 7 FT.<sup>3</sup> CONCRETE IN NEAT SECTION)

**GENERAL NOTES:**

1. CONDUITS SHOWN ARE FOR EXAMPLE ONLY. ADDITIONAL CONDUITS MAY BE REQUIRED AS SHOWN ON THE PLAN SHEETS.
2. FOR CONDUIT END TREATMENT REFER TO ODOT STANDARD SPECIFICATIONS FOR CONSTRUCTION, LATEST EDITION (SEE SECTION 00960.42) AND OREGON STANDARD DRAWING LATEST EDITION (TM472).
3. IN JUNCTION BOXES WHERE THERE ARE EXISTING WIRES AND CONDUITS, THE CONTRACTOR SHALL ADJUST THEM AS NECESSARY TO MAINTAIN THE SYSTEM WHEN WORK IS COMPLETE.
4. JUNCTION BOXES AND COVERS SHALL BE RATED TIER 15 ACCORDING TO ANSI/SCTE 77-2007.
5. JUNCTION BOXES SHALL BE INSTALLED BEHIND THE SIDEWALK OR IN THE PLANTER STRIP WHEN POSSIBLE.
6. REFER TO SPECIAL PROVISIONS AND STANDARD SPECIFICATIONS SECTION 00960 AND 00970 FOR APPROVED EQUIPMENT AND ADDITIONAL REQUIREMENTS.
7. JUNCTION BOXES SHALL BE FLARED WITH SIZE AS SHOWN ON PLANS.
8. FURNISH ELECTRICAL SPLICE MATERIAL MEETING THE FOLLOWING REQUIREMENTS:  
SPLIT BOLT - MADE OF SILICON BRONZE TO SECURELY JOIN THE WIRES BOTH MECHANICALLY AND ELECTRICALLY.  
INSULATING RUBBER TAPE - ELECTRICAL GRADE, NONDRYING, RUBBER BASED, ELASTIC TYPE CONFORMING TO ASTM D4388.
9. ILLUMINATION CONDUITS SHALL HAVE A MINIMUM COVER OF 30 INCHES FROM THE FINISHED SURFACE UNLESS REQUIRED TO BE DEEPER BY PERMIT.



**JUNCTION BOX INSTALLATION WITH APRON (NEAR ILLUMINATION POLE)**

NOT TO SCALE

**NOTES:**

1. ILLUMINATION CIRCUIT WIRES ARE NOT SHOWN. SEE ILLUMINATION PLANS.
2. ILLUMINATION CIRCUITS SHALL BE SPLICED ACCORDING TO GENERAL NOTE 8.

JB SIZE	W	L	D
JB 1	11"	18"	12"
JB 2	13"	24"	18"
JB 3	17"	30"	18"

**MINIMUM JUNCTION BOX DIMENSIONS**

ACCOMPANIED BY STANDARD DRAWING 6810, 6820, AND 6833

**WASHINGTON COUNTY**  
 DEPARTMENT OF LAND USE & TRANSPORTATION  
 ENGINEERING SECTION  
 PLOT STAMP: 06/27/24 2:16P NOAHL  
 CAD: 6831.DWG

**TRAFFIC ENGINEERING JUNCTION BOX DETAILS**  
 WASH. CO. # 6831  
 EFFECTIVE DATE: 07/01/2024