



Emergency Shelter Programs



- Congregate Shelter
 - Individuals and Couples- no minors
 - Walk-up Beds
 - Law Enforcement Beds – Drop-off protocols
- Non-Congregate Shelter
 - Not Suitable for Congregate/Medically Fragile
 - Families with and without minor children
- Alternative Shelter
- Youth Shelter

**Shelter participants must be able to complete Activities of Daily Living



Shelter Capacity by Location

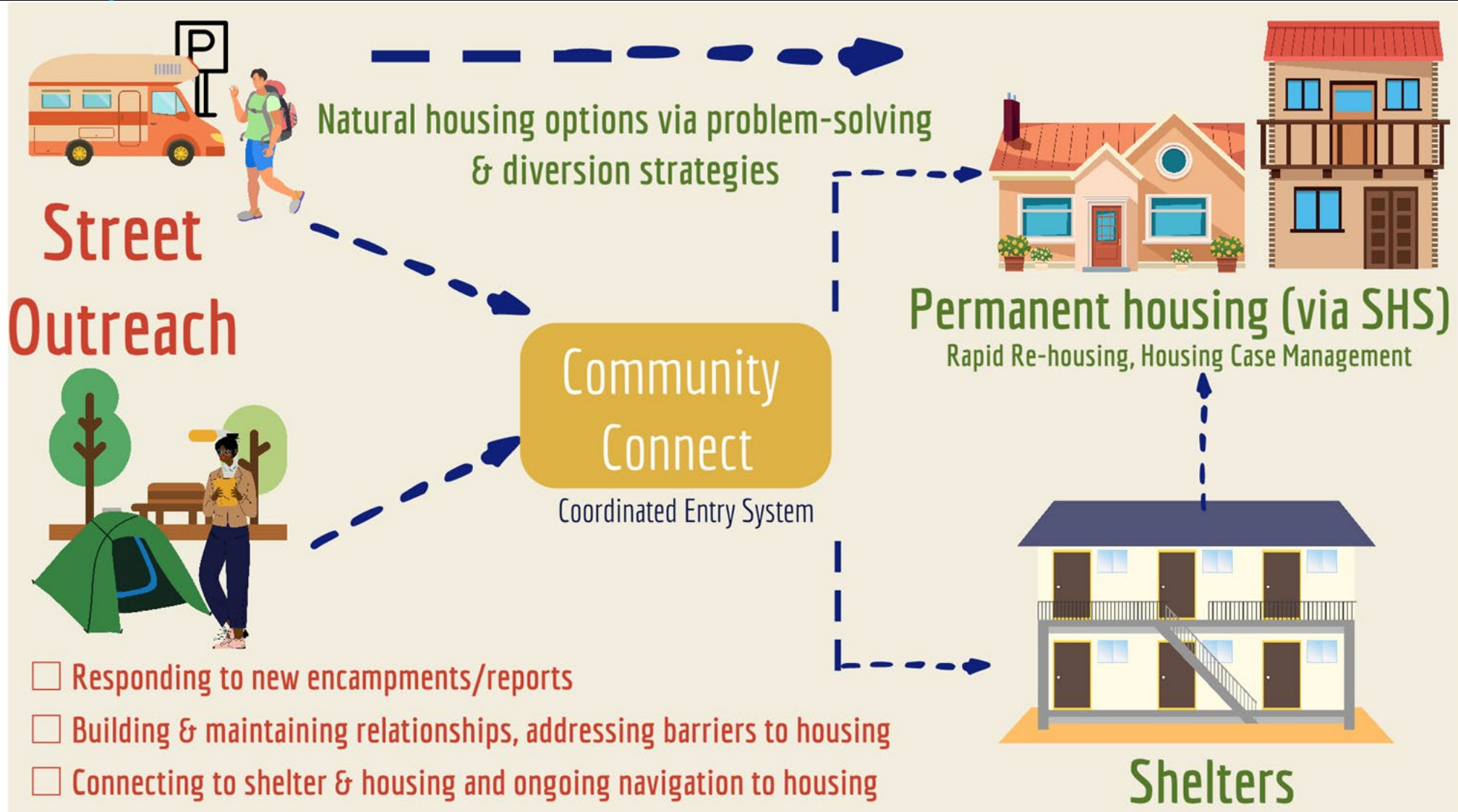
Location	Actual	2023-24
CoC	96	96
Hillsboro	115	115
Beaverton	85	85
Tigard-Tualatin/Sherwood	60	90
Western WC	70	70
TBD (Aloha Pods)	0	30
TOTAL WC	426	486

Shelter Capacity by Type

Type	Actual	2023-24
Congregate	177	177
Non-Congregate	207	237
Alternative	30	60
Youth	12	12
Total	426	486

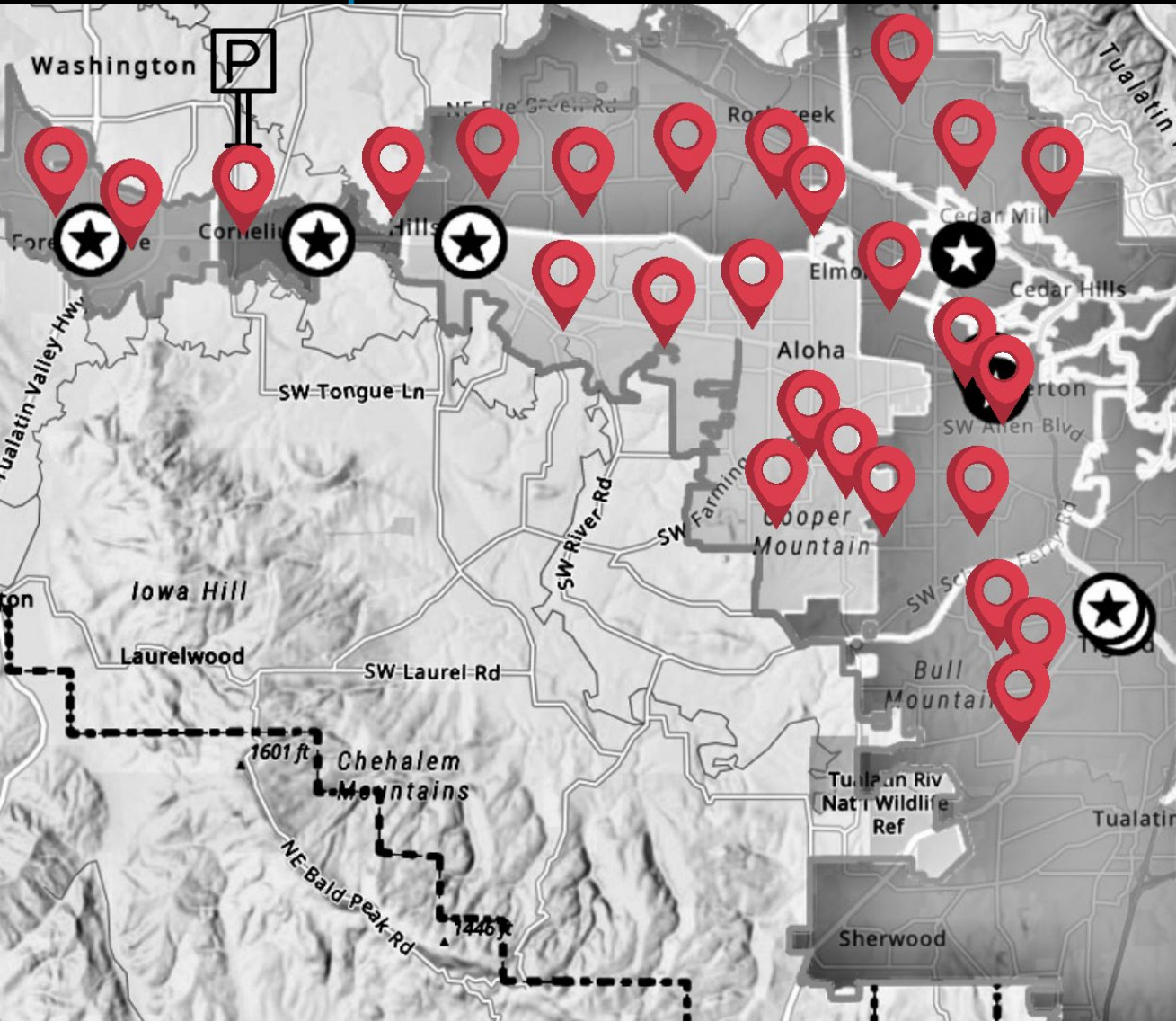


Street Outreach





Locally Coordinated Command Center (LC3)



By-Name List

- Intensive street outreach
- Specifically for unsheltered
- Organized by area
- Organized by priority
- Emphasis on finding appropriate shelter/housing options
- Collaboration across providers and with county

The goal is a comprehensive & dynamic list of everyone unsheltered in Washington County and a tool for collaborative problem solving.

All Referrals Prioritization

All referrals:

- Over 55 years old
- Medical or judicial discharge
- Length of literal homelessness
- ***Unsheltered status***
- Connection to Enhanced Case Management (Housing Case Management Services (HCMS), Rapid Re-Housing (RRH), Veterans Affairs Supportive Housing (VASH), Shelter + Care (SPC), Continuum of Care programs (CoC))

Congregate and Non-Congregate Shelter:

- 1st priority: households enrolled in an Enhanced Case Management Program

Family Non-Congregate Shelter:

- 1st priority: households with minor children enrolled in Enhanced Case Management
- 2nd priority: households with two or more adults enrolled in Enhanced Case Management
- 3rd priority: households with minor children
- 4th priority: households with two or more adults



Current Shelter Status



479 Individuals Sheltered

30 Beds open last night

91% total unit utilization

83 pending matches

50 days average length of pending referrals

23 days for congregate, 61 for non-congregate

863 total hh on waitlist

246 Families with Children – 51 unsheltered

605 Adult only HH- 327 unsheltered

Average Length of stay: 113 days non-congregate, 38 days congregate & youth

95% of HH w complete Phase 1 assessments

30% Enrolled in Housing Program