



Washington County

# Homeless Services

Medicaid Housing Related Social Needs: Housing Benefit

Housing and Supportive Services Network (HSSN) Meeting

June 5, 2024

Department of Housing Services

[co.washington.or.us](http://co.washington.or.us)



# Meeting Overview



Our aim is to cover the following topics:

- Medicaid 1115 Waiver HRSN
- Medicaid 1115 Waiver – Housing Benefit
- Washington County Hub
- Implementation Timeline
- Q + A

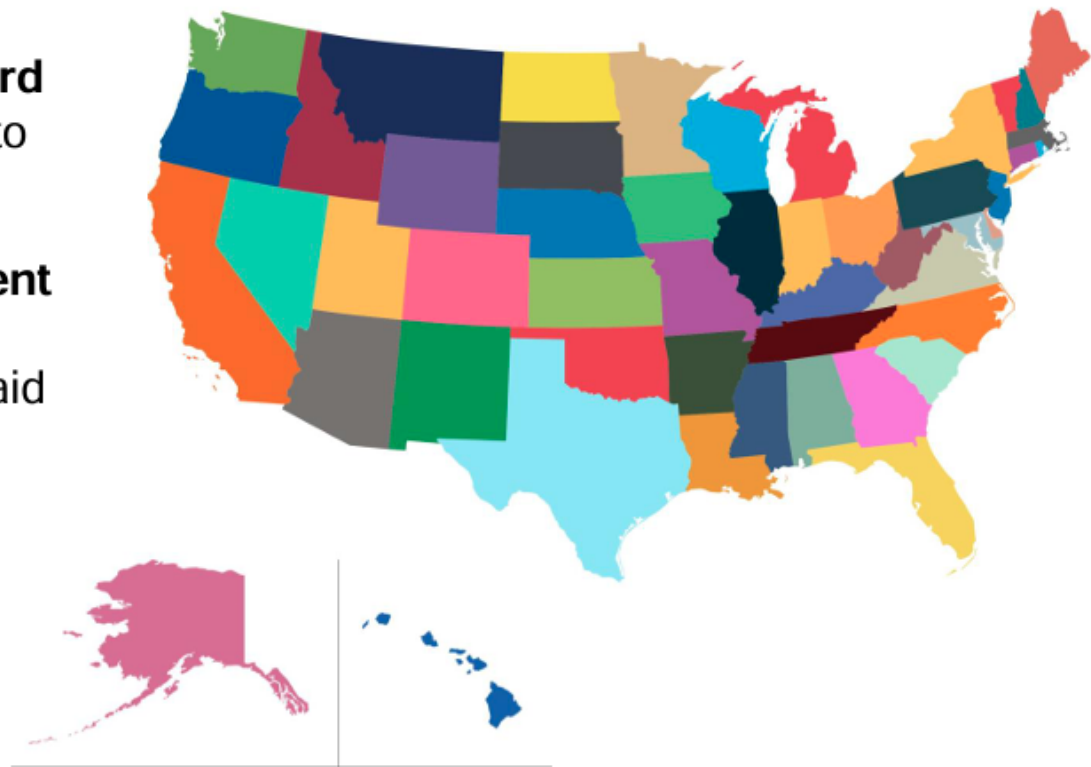


# Medicaid 1115 Waiver



## What is the 1115 Medicaid Waiver?

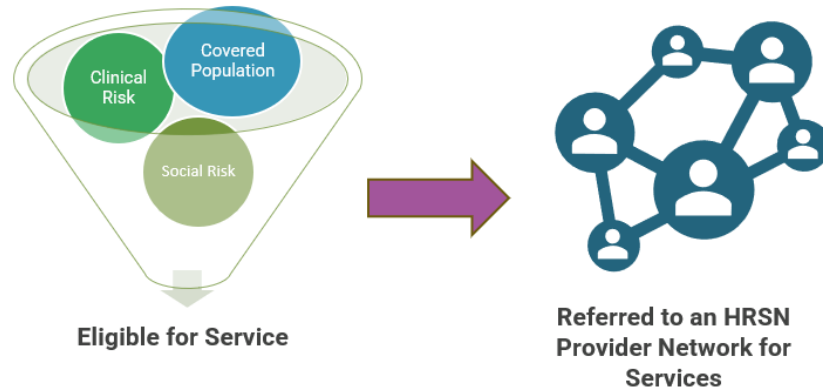
- The federal government has a **standard set of rules each state must follow** to get funds for Medicaid.
- States can **ask the federal government for permission to change** their Medicaid rules. This is called a Medicaid waiver.
- Oregon's new 1115 Medicaid Waiver includes **health related social needs (HRSN) services** as an OHP covered benefit.



[Oregon 1115 Waiver 2022-2027](#)



# Medicaid 1115 Waiver – Health Related Social Needs (HRSN)



## Health Related Social Needs

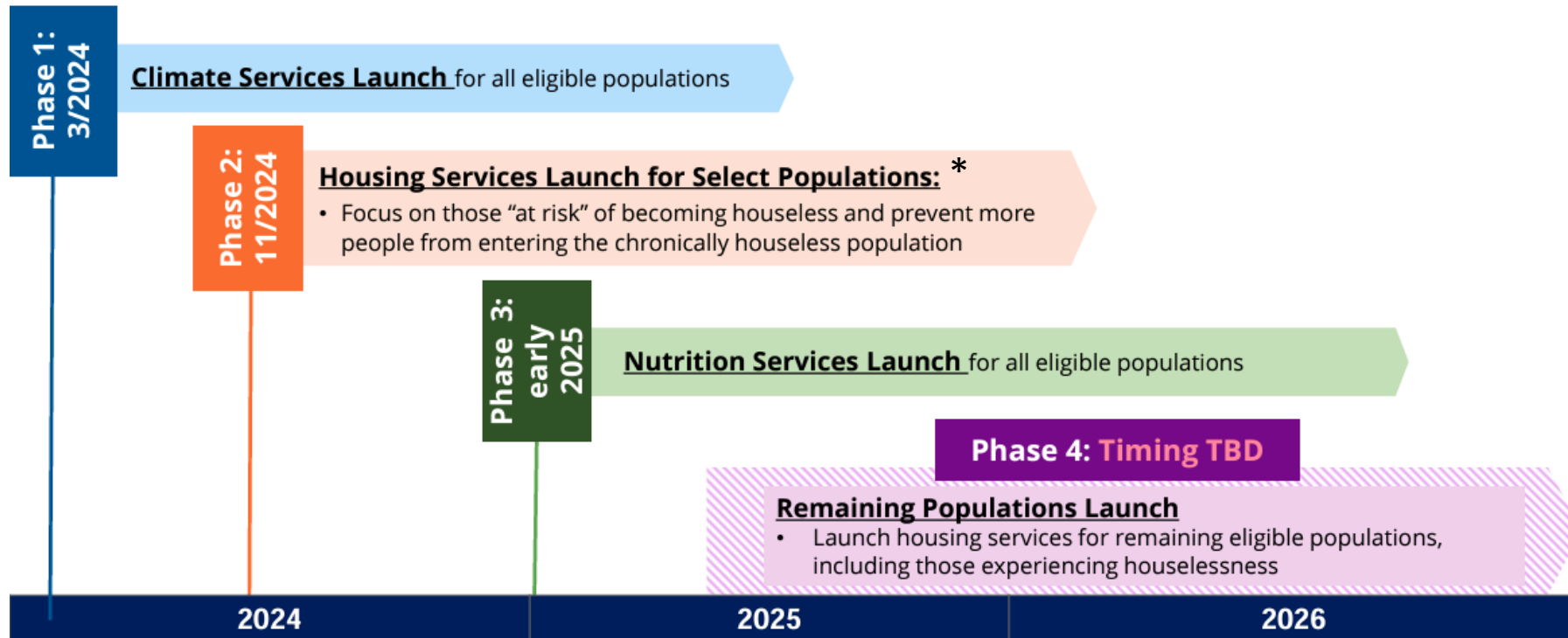
Covered Population	Clinical Risk	Social Risk	HRSN
<ul style="list-style-type: none"> <li>• Young adults with Special Health Care Needs (YSCHN)</li> <li>• Adults/youths discharged from Institution for Mental Disease</li> <li>• Adults/youths released from incarceration</li> <li>• Youth involved w/child welfare</li> <li>• Individuals transitioning to Dual Status</li> <li>• <b>Individuals who are homeless or at risk of homeless</b></li> </ul>	<ul style="list-style-type: none"> <li>• Complex behavioral health need</li> <li>• Developmental disability need</li> <li>• Complex physical health need</li> <li>• Needs assistance with ADLS/IADLS or eligible for LTSS Interpersonal Violence Experience</li> <li>• Repeated Emergency Department use and crisis encounters</li> <li>• Pregnant/Postpartum</li> <li>• Children &lt; 6 years of age</li> <li>• Adults &lt; 65 years of age</li> <li>• YSCHN</li> </ul>	<ul style="list-style-type: none"> <li>• Individual who resides in their own home/non-institutional primary residence for whom an A/C, heater, air filtration device, portable power supply (PPSs), and/or refrigeration units for meds is clinically appropriate as component of health services treatment or prevention.</li> <li>• <b>Is homeless or at risk of becoming homeless as defined by HUD</b></li> <li>• Meeting the USDA definition of low food security.</li> </ul>	<ul style="list-style-type: none"> <li>• <b>Climate Supports</b></li> <li>• <b>Housing Supports</b></li> <li>• <b>Nutrition Supports</b></li> <li>• <b>Outreach &amp; Engagement</b></li> </ul>



# Medicaid 1115 Waiver – Health Related Social Needs (HRSN)



## Health-Related Social Needs Services Timeline



\*Needs support to maintain their current housing

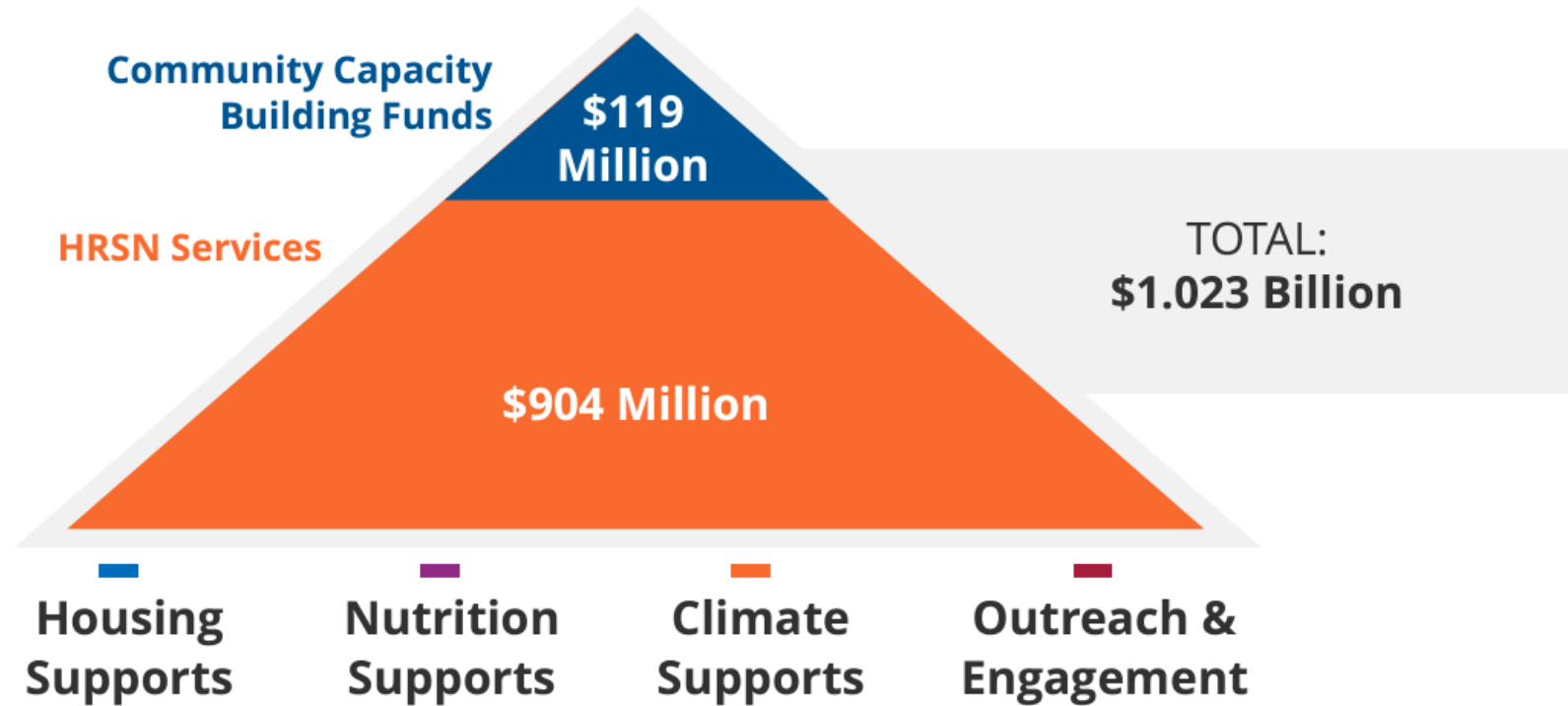




# Medicaid 1115 Waiver – Health Related Social Needs (HRSN)



## HRSN-Specific Funding Components





# Medicaid 1115 Waiver – HRSN: Housing Benefit



**\$904 million** available to provide **Health-Related Social Needs** services to eligible individuals through reimbursement to providers of:



Housing  
Supports



Nutrition  
Supports



Climate  
Supports



Outreach &  
Engagement

## Housing Supports

- Rental assistance or temporary housing (e.g. rental payments, deposits, utility assistance) for up to 6 months
- Home modifications (e.g. ramps, handrails, environmental remediation)
- Pre-tenancy and tenancy support services (e.g. housing application, moving support, eviction prevention)
- Housing-focused navigation and/or case manager

## Outreach and Engagement

- Engaging OHP members who may be eligible
- Verifying member's coordinated care organization or open card enrollment
- Sending HRSN request to appropriate CCO or OHA for open card
- Providing information and support to connect with other services (e.g. medical, peer, social, education, legal)



[HRSN Protocol: Housing Supports](#)



# HRSN Housing Services Providers



Service Provider  
and Vendors



Eligible Members



Care  
Coordinators



Community  
Connectors

## HRSN Provider Experience and Expertise:

1. Be accessible, including having the hours and staff necessary to be available to HRSN participants.
2. Demonstrate ability and/or experience with support at least one Priority Population.
3. Show they have qualified service delivery staff.
4. Provide trauma-informed, culturally and linguistically appropriate deliver of services.
5. Demonstrate responsible financial practices.
6. Follow all applicable federal and state laws.
7. Enroll as Medicaid provide in MMIS, OHA's electronic system that processes Medicaid claims.
8. Meet readiness standards related to doing business as an HRSN Service Provider.



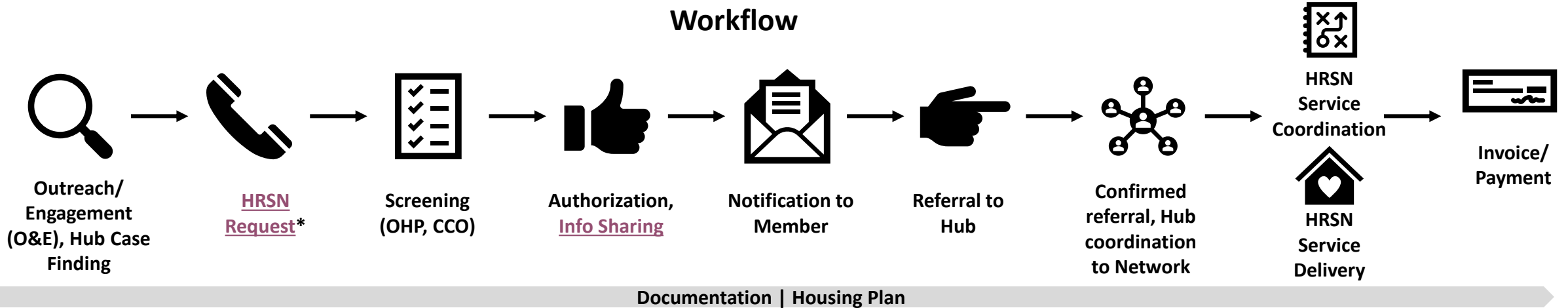
[HRSN Provider Journey](#)



[HRSN Member Journey](#)



# → Washington County Hub (Concept)



\*Example from Climate Supports



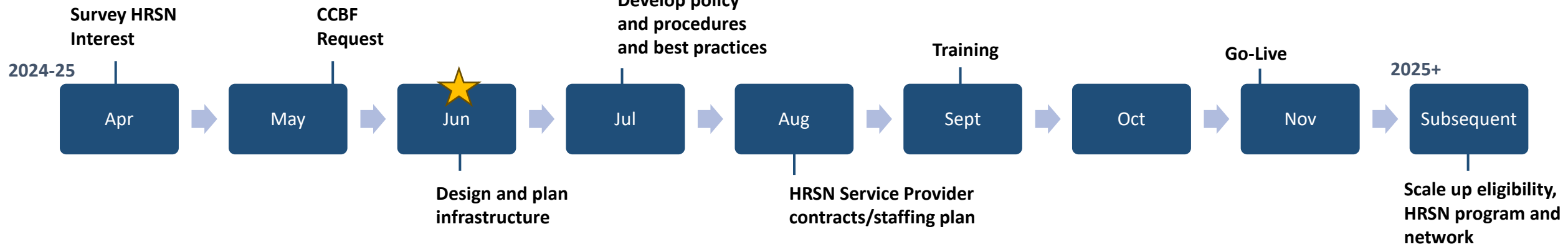
# Implementation Timeline (Proposed)



## Pre-Development

## Development

## Implementation





# Feedback



## Q + A

For follow-up questions, contact:

Leslie Gong

Health and Housing Integration Program Coordinator

[leslie\\_gong@washingtoncountyor.gov](mailto:leslie_gong@washingtoncountyor.gov)

For more OHA Updates:

- For additional updates and information, check our website:  
[www.oregon.gov/1115waiverrenewal](http://www.oregon.gov/1115waiverrenewal)
- Subscribe to OHA's bi-weekly waiver newsletter:  
<https://public.govdelivery.com/accounts/ORHA/signup/37696>
- For any past OHA presentations (partner sessions), please contact us: [1115waiver.renewal@odhsoha.oregon.gov](mailto:1115waiver.renewal@odhsoha.oregon.gov)



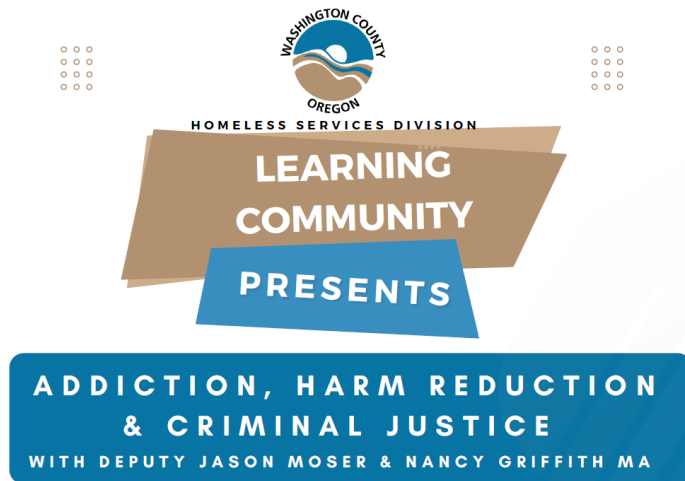


# Upcoming Events



## Behavioral Health Resources Network (BHRN)

Washington County has many providers who receive funding to provide substance use treatment and supports for free or low cost. The providers work together as a network to connect people to the right support for their needs. They can provide treatment and resources to any individual who resides within Washington County.



**Wednesday, June 12**  
**10:00 AM to 12:00 PM**

Public Service Building  
155 N First Avenue  
Rooms 105 & 115

Virtual Option Available

Questions? [lindsay\\_dent@washingtoncountyor.gov](mailto:lindsay_dent@washingtoncountyor.gov)