



# Washington County

## One Homeless Services System

*A vision for renewed governance*

Fall 2022

Department of Housing Services

[co.washington.or.us](http://co.washington.or.us)



# Current governance challenges

What we've heard:

*Its hard to understand how and where decisions are made*

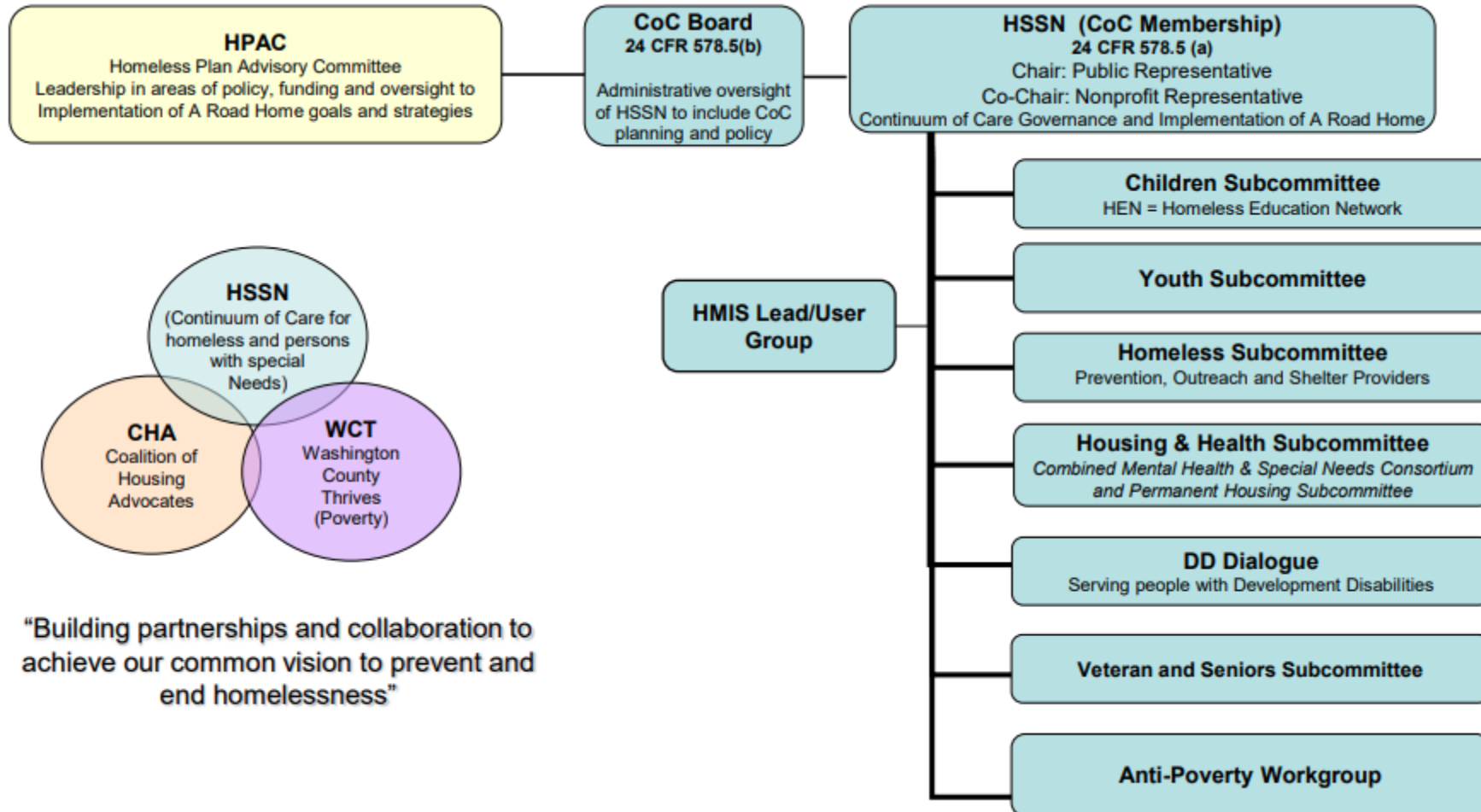
*It's challenging to provide guidance on a system plan, when we have separate plans for SHS programs and CoC funded programs*

*There are too many meetings with a lot of the same program updates*

*Its hard to understand how the system is working together and what we are prioritizing in Washington County*



# Historic advisory structure





# One Homeless Services System

What is Good Community Governance?





# Expectations for Governance

Requirement	HUD – CoC	Metro – SHS	Washington County
<b>Draft and Oversee System Plan</b>	Yes (A Road Home)	Yes (LIP)	Yes
<b>Equity Diversity and Inclusion</b>	Yes	Yes	Yes
<b>Coordinate with Other Systems and Funding</b>	Yes (ex: ESG, EFSP, and many more)	Yes	Yes
<b>Convene Stakeholders Community, People with lived experience</b>	Yes (HSSN)	Yes	Yes
<b>Ensure Client Civil Rights</b>	Yes	Yes	Yes
<b>Review/Approve Reports</b>	Yes (PIT, HIC, SPM, LSA)	Yes (Annual Work Plan Quarterly Reports)	Yes



# One Homeless Services System

*DRAFT* Goals for governance, guidance and engagement:

**Meaningful engagement** of our community and stakeholders to guide priorities, policy and program improvements

**Accessible participation** that build upon current success, expands involvement, and provides clarity in decision making processes.

**Unified governance** consistent with Washington County, HUD, and Metro requirements for oversight and advisement



# Process for One Governance





# Questions for discussion

## Breakout questions:

- What does good governance feel like?
- What other values should guide this work?
- What does “one homelessness services system” mean for Washington County?





# Next steps: One Governance

## Convene Steering Committee

### Seeking:

- 2-3 hours per month | 1 year commitment
- Seeking up to 15 members
- Representation from all current governance bodies

### Phase 1: To Do's

- Advise on early inquiry: outreach and research
- Draft community survey and discussion questions
- Represent/ be ambassadors to the process