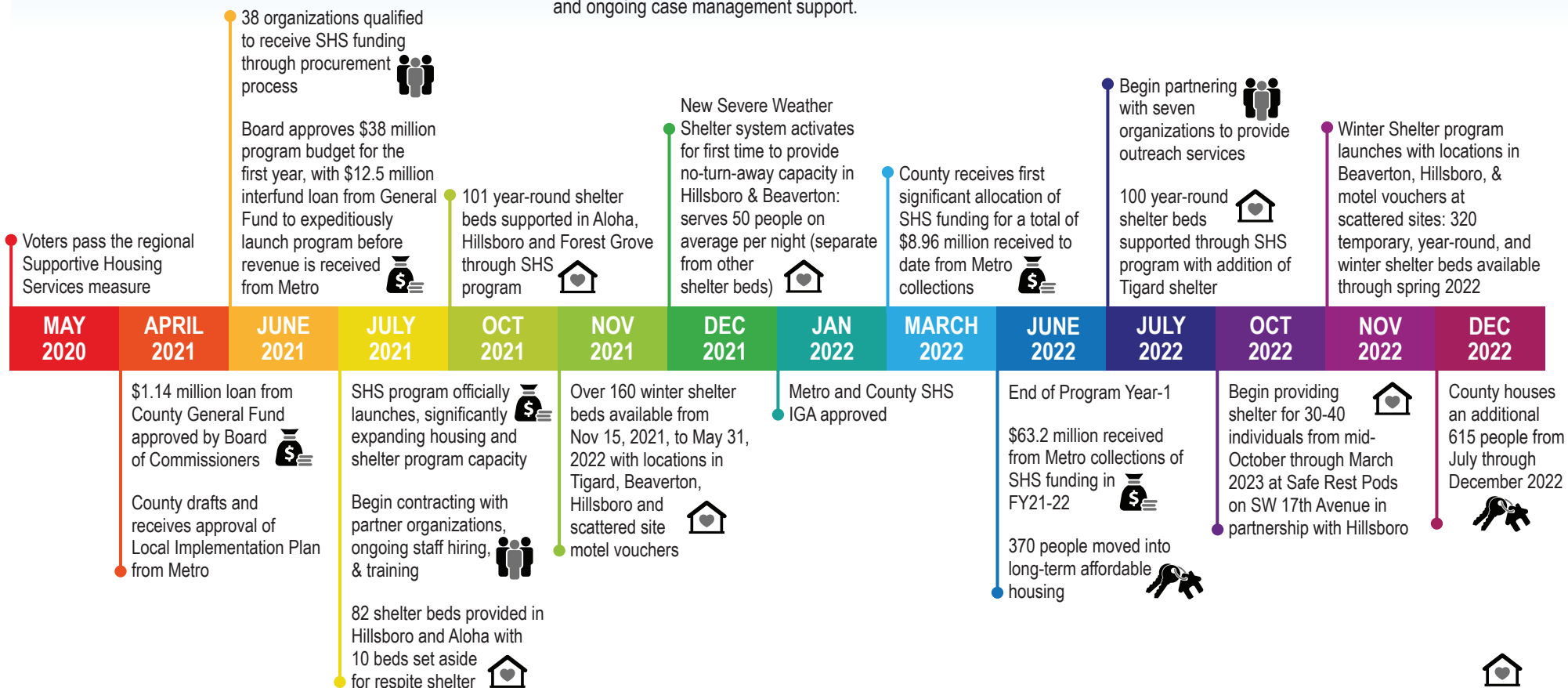




SUPPORTIVE HOUSING SERVICES Milestones & Achievements

The Supportive Housing Services (SHS) program is funded by the voter-approved 2020 Supportive Housing Services measure to address the needs of people experiencing and at risk of homelessness in our region. Supportive housing uses a data-backed housing first approach to ending homelessness with wrap around support to meet the needs of people with complex disabilities who have experienced prolonged homelessness. Prior to the approval of the SHS measure, resources were extremely limited for addressing homelessness, there were no year-round shelter options available to adults experiencing homelessness and annually we housed just 42 households in our community.

The SHS program prioritizes funding for rent assistance in the form of the Regional Long-term Rental Assistance (RLRA) program and housing supports (such as housing case managers and outreach workers) to connect people with available resources. Washington County has also expanded available shelter options to 320 beds including year-round, temporary and severe weather shelters. To date, the SHS program has housed over 614 people. The SHS system overall goal is to provide 1,650 supportive housing placements using RLRA and 250 year-round shelter beds. At full capacity, this will represent \$33 million in program funds between rent assistance and ongoing case management support.



SHS Milestone Highlights

1,000+ people Transitioned to supportive housing July 2021 through January 2023

320 beds Shelter capacity added to date including year-round, winter, and temporary shelter locations (Not including severe weather shelter capacity that activates during extreme hot and cold weather events)

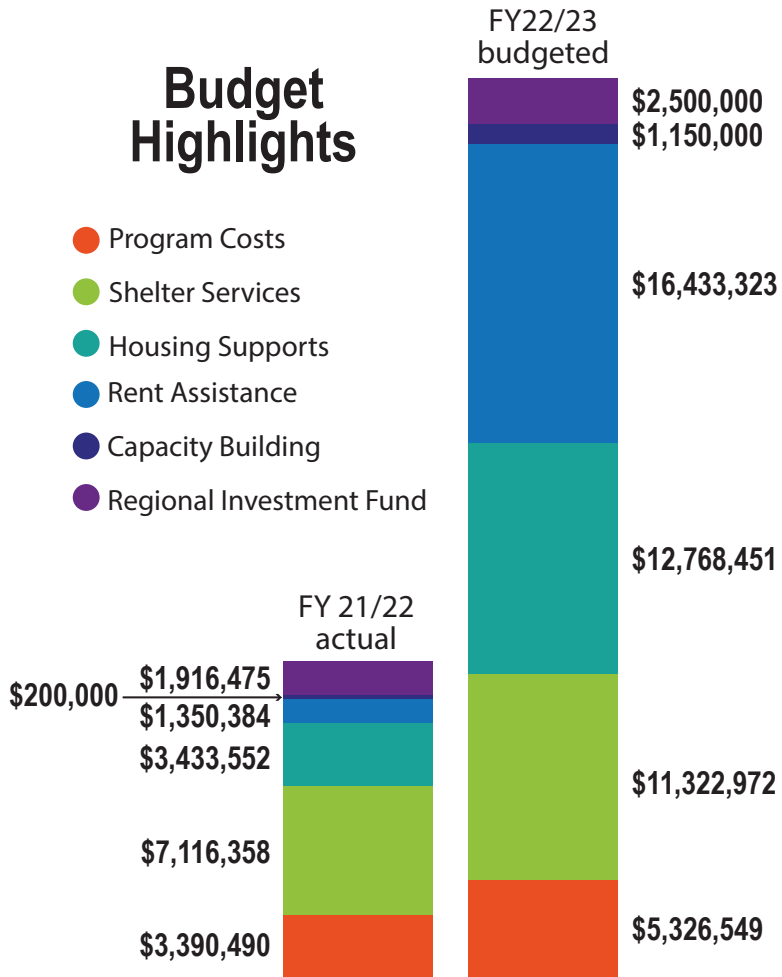
72 workers Housing worker capacity added to date



SUPPORTIVE HOUSING SERVICES

Budget Highlights

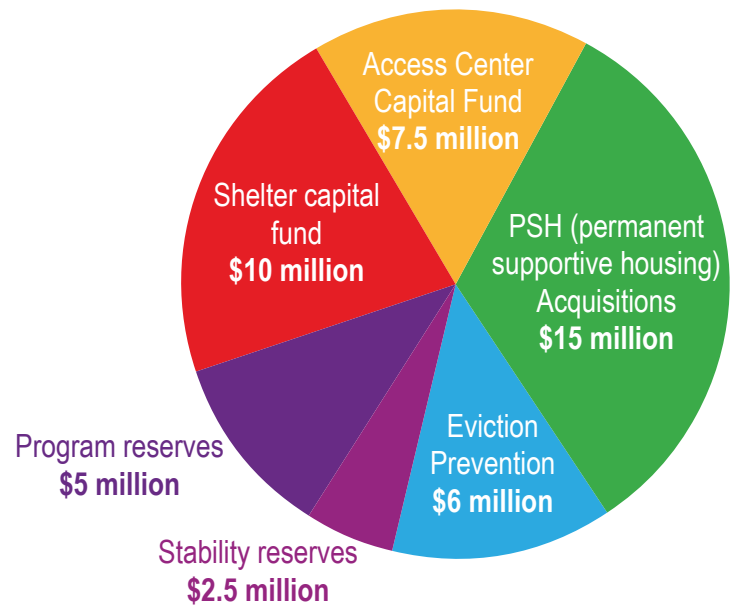
- Program Costs
- Shelter Services
- Housing Supports
- Rent Assistance
- Capacity Building
- Regional Investment Fund



One-time capital investment plan

To address underspending in the program budget as partners grow programming capacity in the first two years, the County will make significant one-time investments in capital and other system needs to address homelessness.

\$46 million planned for FY 22/23



Households moved and retained in housing

- New households placed each year
- Households supported annually

