

EMERGENCY RENT ASSISTANCE PROGRAM

Manager, Wendy Polanco

Assistant Manager, Eduardo Guzman Andrade



WHY?

According to Census ACS data for Washington County 39.08% of Washington County households rent in 2019, median monthly gross rent as a fraction of median household income was 20.07% in 2019.

Fair Market Rent in Washington County as of this year 2023

1 bedroom = \$1610

2 bedrooms = \$1839

3 bedrooms = \$2574

An unforeseen event like a sick family member or job loss can be devastating to a family's budget, making the risk of eviction very real. Our program focuses on identifying other solutions for renters.

Source: https://www.deptofnumbers.com/rent/oregon/washington-county/#pct_income

<https://www.rentdata.org/portland-vancouver-hillsboro-or-wa-msa/2023>

EMERGENCY RENT ASSISTANCE CRITERIA

EMERGENCY RENT ASSISTANCE IS AVAILABLE TO WASHINGTON COUNTY RESIDENTS WHO MEET ALL THE FOLLOWING CRITERIA:

- Have a rental contract with at least one household member included
- Have an Eviction notice for nonpayment of rent in hand for the current month in which you are applying.
- Are below the 50% Area Median Income (see annual income table below)

Household Size	50% AMI
1	\$37,300
2	\$42,600
3	\$47,950
4	\$53,250
5	\$57,550
6	\$61,800
7	\$66,050
8	\$70,300

HOW TO REQUEST A SCREENING FOR RENT ASSISTANCE



CALL

503-615-0770



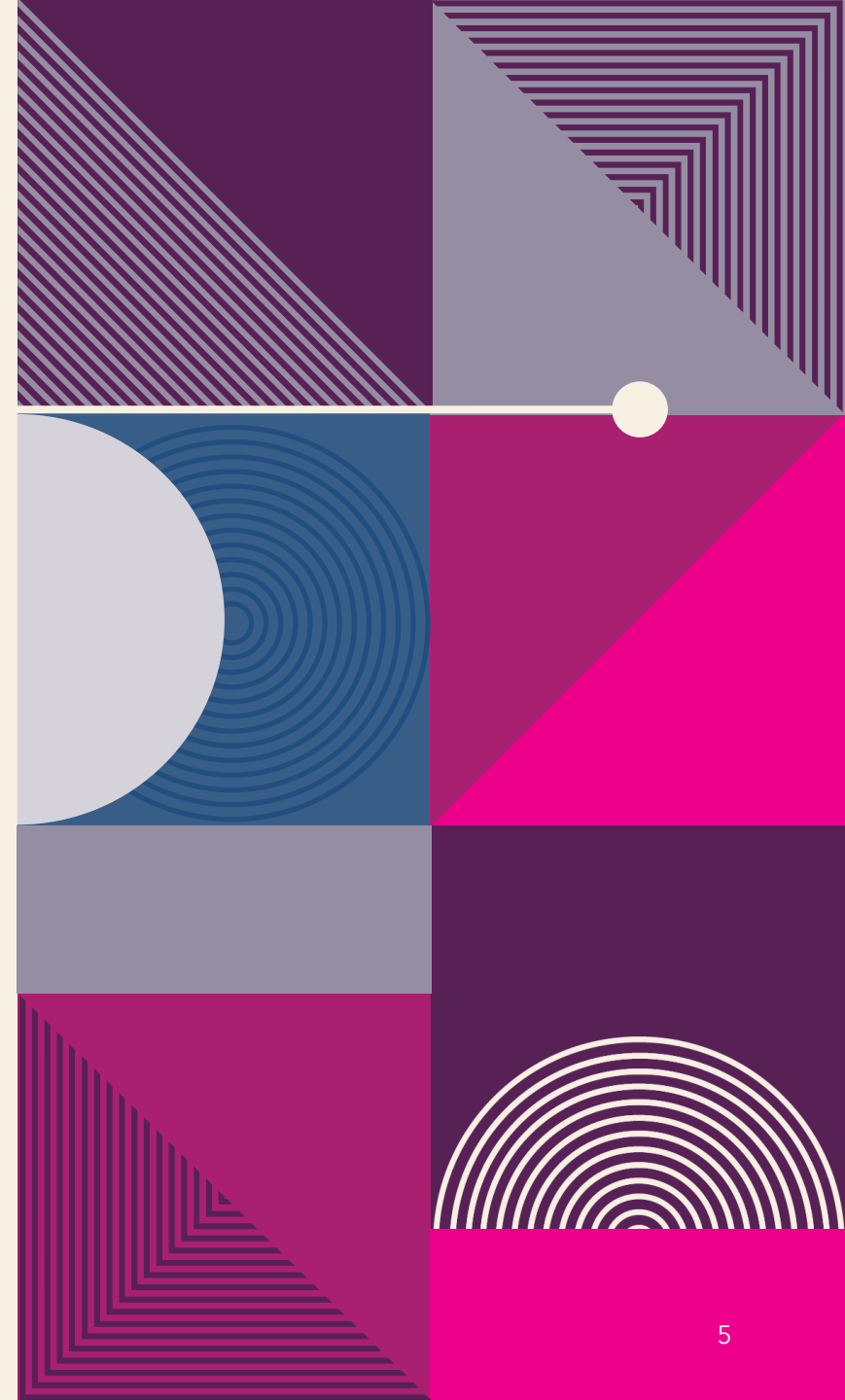
ONLINE WWW.CAOWASH.ORG

PROGRAMS>HOUSING
STABILITY> RENTER SUPPORT

- The Prevention line will open at 9AM on the 8th of each month. The line will close once all appointments are filled.
- Tenants can Submit an Online Screen Request on the 15th of the month at 6:00 pm
 - (if those dates fall on the weekend, requests will be taken the following Monday)

APPLICATION PROCESS

- REQUEST A SCREENING
- ONCE A HOUSEHOLD IS DEEMED ELIGIBLE, THEY ARE SCHEDULED A 90-MINUTE PHONE APPOINTMENT WITH A CAO STAFF MEMBER TO ENTER THE HOUSEHOLD DATA AND COLLECT NECESSARY DOCUMENTATION
 - ID's for all adults 18+
 - Verification of income the household has received
 - Non-payment eviction notice
 - Copy of signed rental contract/lease
- ONCE ELIGIBILITY HAS BEEN DETERMINED WE WILL CONTACT THE LANDLORD AND CLIENT WITH THE APPROVED PAYMENT AMOUNT
- GIVE US ONE TO TWO WEEKS TO MAIL THE CHECK TO THE LANDLORD AFTER THE INTAKE IS COMPLETE AND APPROVED
- SIX MONTH FOLLOW UP ASSESSMENT



CARE ASSESSMENT

CARE assessments connect clients to additional resources within our agency such as:

- Childcare and Resource Referral
- Community Connect
- Emergency Food
- Energy Conservation
- Financial Education
- Head Start
- Healthy Families
- Help Me Grow
- Housing and Homeless Services
- Utility Assistance

APPLICATION FLOWCHART

Client Intake

Prevention Line

Online Screen
Request

Crisis Intervention

Eviction Court

Partner Organization

Assessment

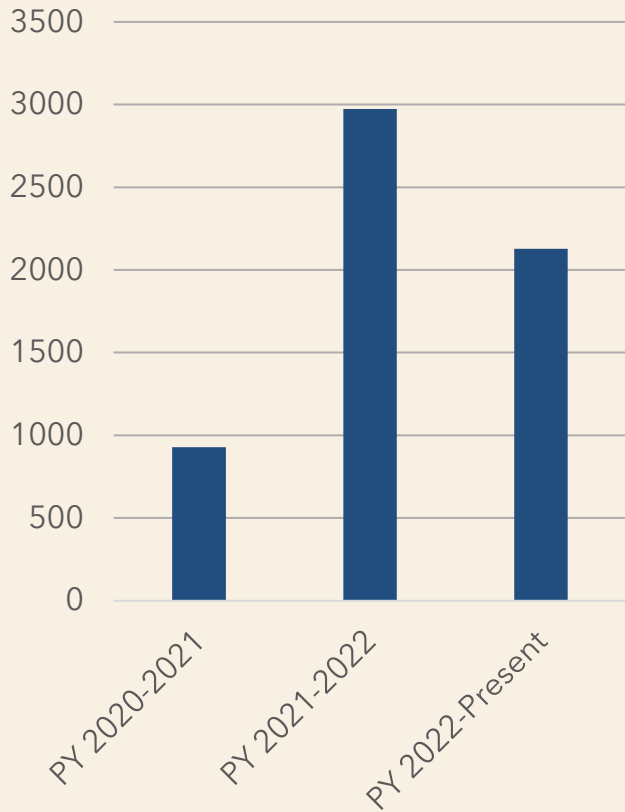
- Verify eligibility
- Collect household documentation
- Collect landlord information
- Submit funding request

Fund Approval

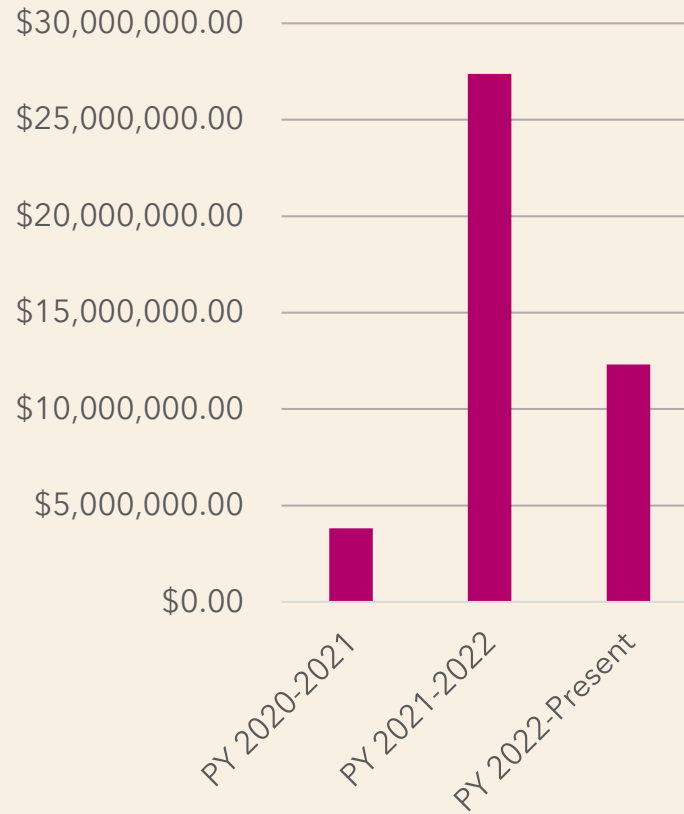
- Funding request is reviewed and sent to finance
- Finance sends out payment
- Payment should be received 1-2 weeks after approval

RESULTS

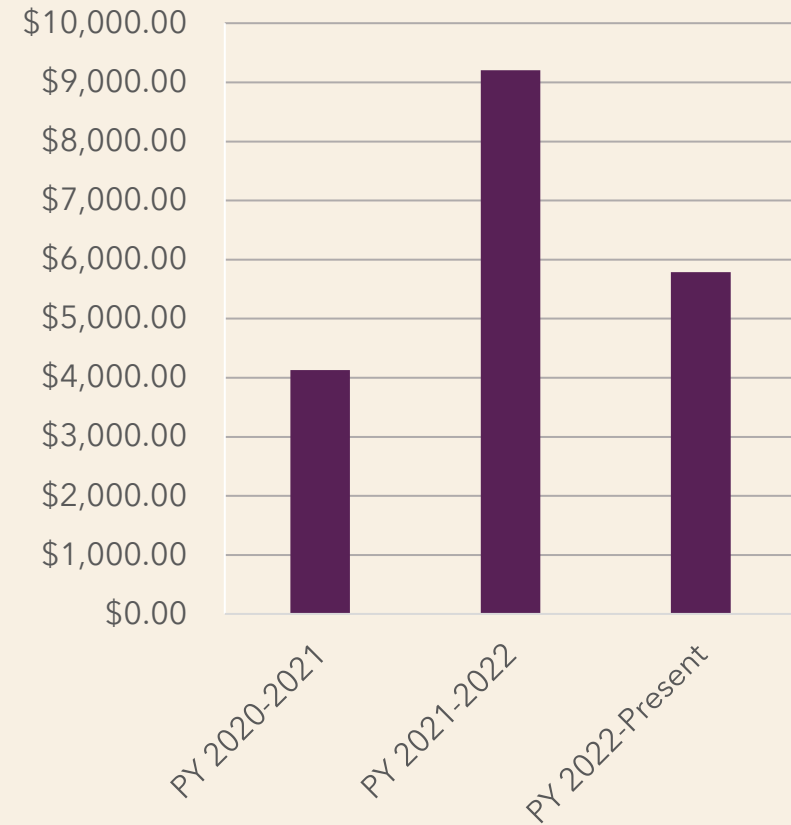
HOUSEHOLDS SERVED



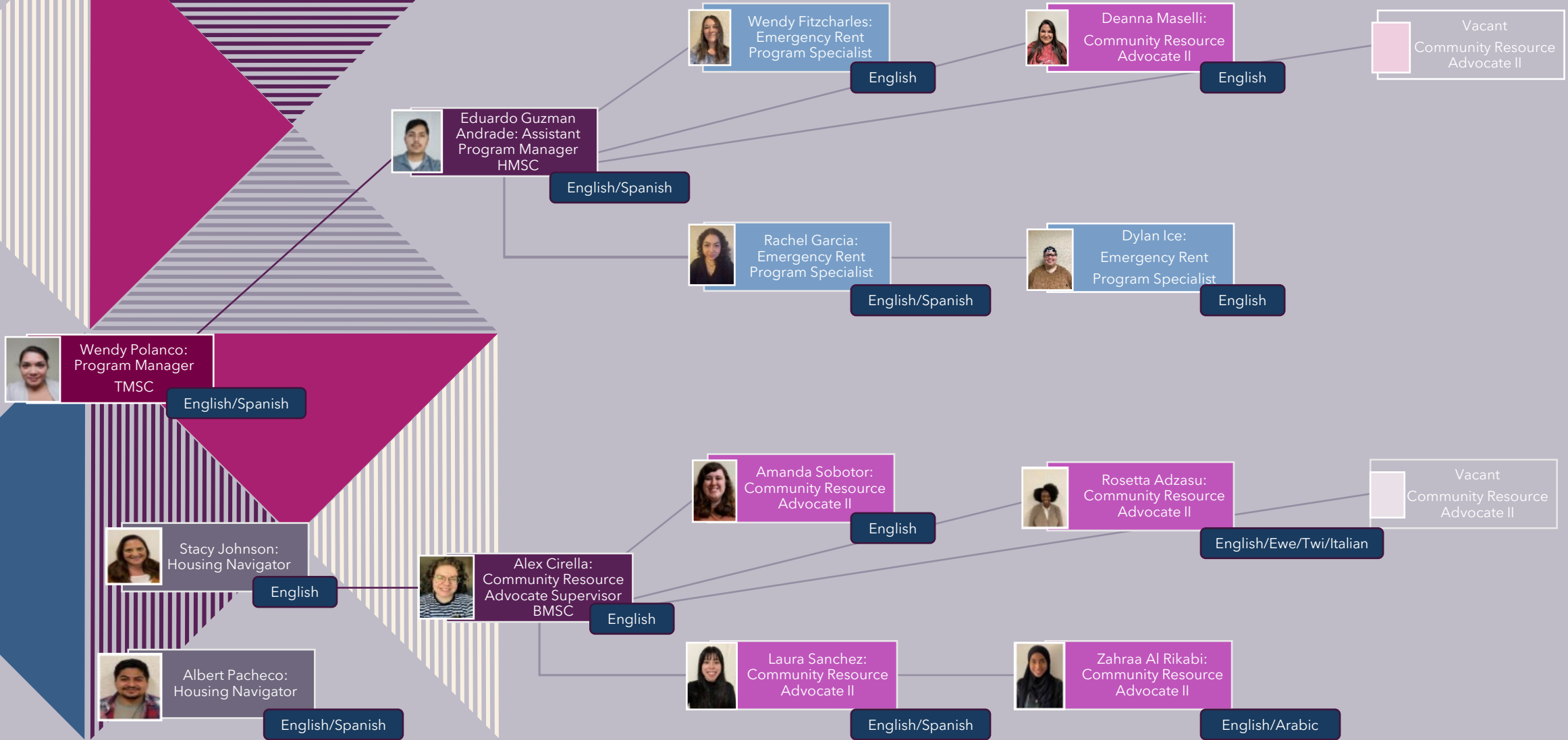
TOTAL ASSISTANCE



AVERAGE PAYMENT PER HOUSEHOLD



MEET THE TEAM



COMMUNITY ACTION - EMERGENCY RENT FLYER

COMMUNITY ACTION



Emergency Rent Assistance



OUR SERVICES

Our team may be able to assist with your past and current months of rent. Other possible assistances may include, utilities being paid directly to your landlord. If you have a pending Emergency Rental Assistance Application with our agency and need a status update of your application, Please contact us at (503) 615-0770 and leave a voice message.

Household Size	50% AMI
1	\$37,300
2	\$42,600
3	\$47,950
4	\$53,260
5	\$57,560
6	\$61,800
7	\$66,060
8	\$70,300



Monday April 3rd, 2023

ELIGIBILITY REQUIREMENTS:

- Must be a Wash Co. Resident
- Be under the 50% Area Median Income
- Have received an Eviction Notice for non payment of rent

HOW TO APPLY:

- You can call 503.615.0770 on the 8th of the month at 9:00am (if the 8th of the month fall on a weekend please call the following Monday).
- Submit an Online Prescreening Request at: <https://caowash.org/programs/housingstability/renter-support.html> on the 15th of the month at 6:00pm (if the 15th of the month fall on a weekend please visit our website the following Monday).

OREGON EMERGENCY RENTAL ASSISTANCE PROGRAM INFO:

If you've submitted an OERAP Application and need a status update, please contact OERAP at: 1(844)378-2931, or oregonera@pcgwv.com

New Eligibility Requirement Starting April 3rd, 2023 for Washington County Residents

- Have received an eviction notice for non payment for the month in which you are applying for assistance
- Are below the 50% Area Median Income

1001 SW Baseline Street ~ Hillsboro, OR 97123-3822 ~ Phone: (503) 648-6646 ~ Fax: (503) 648-4173

OTHER HELP

Are you being evicted?

If you have eviction papers from the court, contact the Eviction Defense Project. Tenants whose landlord has taken them to eviction court can call the Eviction Defense Project line (888-585-9638) or email the Project (evictiondefense@oregonlawcenter.org) to seek legal help. Tenants should leave a message on the intake line or by emailing with their name, date of birth, and eviction case number. The EDP is a joint project of Legal Aid Services of Oregon, the Oregon Law Center and the Center for Non-Profit Legal Services.

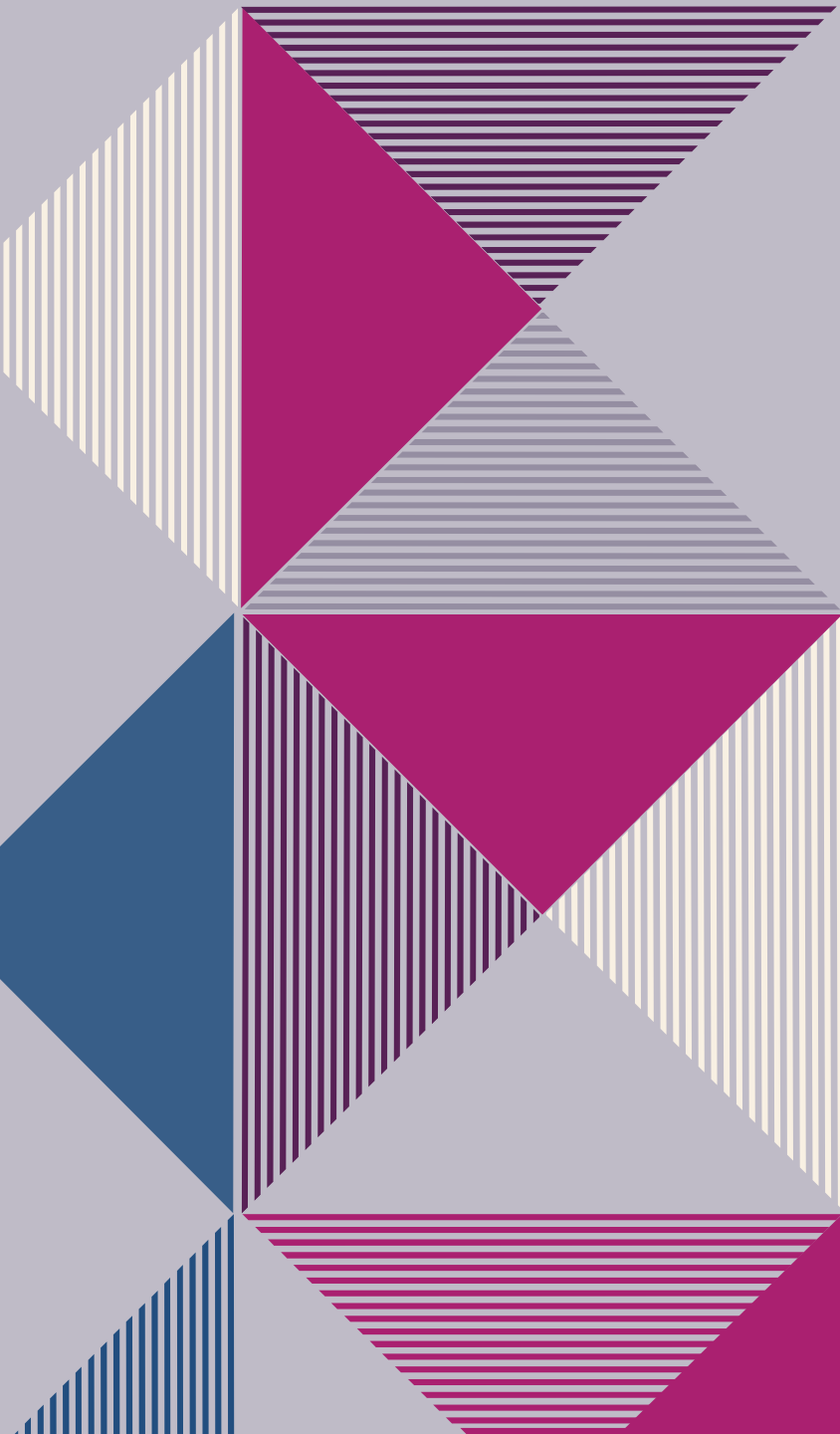
For important information about Washington County eviction court and process visit <https://www.courts.oregon.gov/courts/washington/programs-services/Pages/Landlord-Tenant.aspx> and watch this helpful video on Landlord Tenant First Appearance <https://youtu.be/XP5AyMuzPu0>

You can also Go to www.OregonRentersRights.org or www.OregonLawHelp.org for more information or to seek legal advice

For mediation services: Have tenant contact 503.526.3733 or HousingMediation@beavertonoregon.gov

Scan code for Community Action - Emergency Rent Page





QUESTIONS?