



# Washington County

## Homeless Services

May 3, 2023

Department of Housing Services

[co.washington.or.us](http://co.washington.or.us)



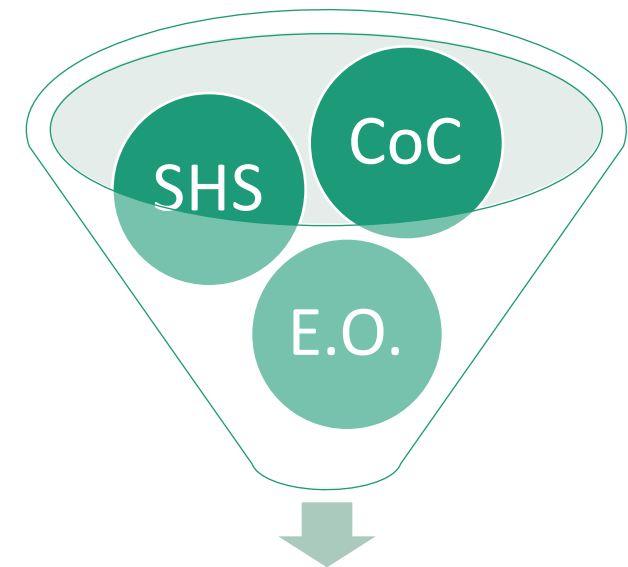
# State of our System



**Supportive Housing Services Approach** to ending homelessness through providing stable housing for all, transparent oversight, accountability and leveraging existing resources

**Governor's Executive Orders** Utilizing an ALL IN, three pronged approach to create new structures and increase coordination between state and local governments in response to the growing unsheltered crisis

**Continuum of Care** Community-wide commitment to the goal of ending homelessness. Comprised of government, non-profit and community leaders who coordinate utilization and access to mainstream programs



One Homeless Services System

# One Homeless Service System

- Street Outreach
- Emergency Shelter
  - Year-Round Shelter
    - Congregate
    - Non-congregate
    - Alternative
  - Winter Shelter
  - Inclement Weather
- Housing Programs
- Permanent Supportive Housing

*Dora moved into her apartment in November 2021 with the help of  
Greater Good Northwest*





# Emergency Shelter Programs



- Congregate Shelter
  - Individuals and Couples- no minors
  - Law Enforcement Beds
- Non-Congregate Shelter
  - Enhanced Case Management- “Bridge Shelter”
  - Not Suitable for Congregate/Medically Fragile
  - Respite
  - Families with and without minor children
- Alternative Shelter
- Youth Shelter

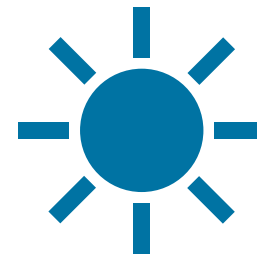
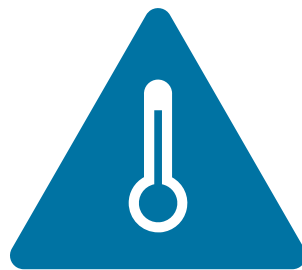




# Inclement Weather Shelter

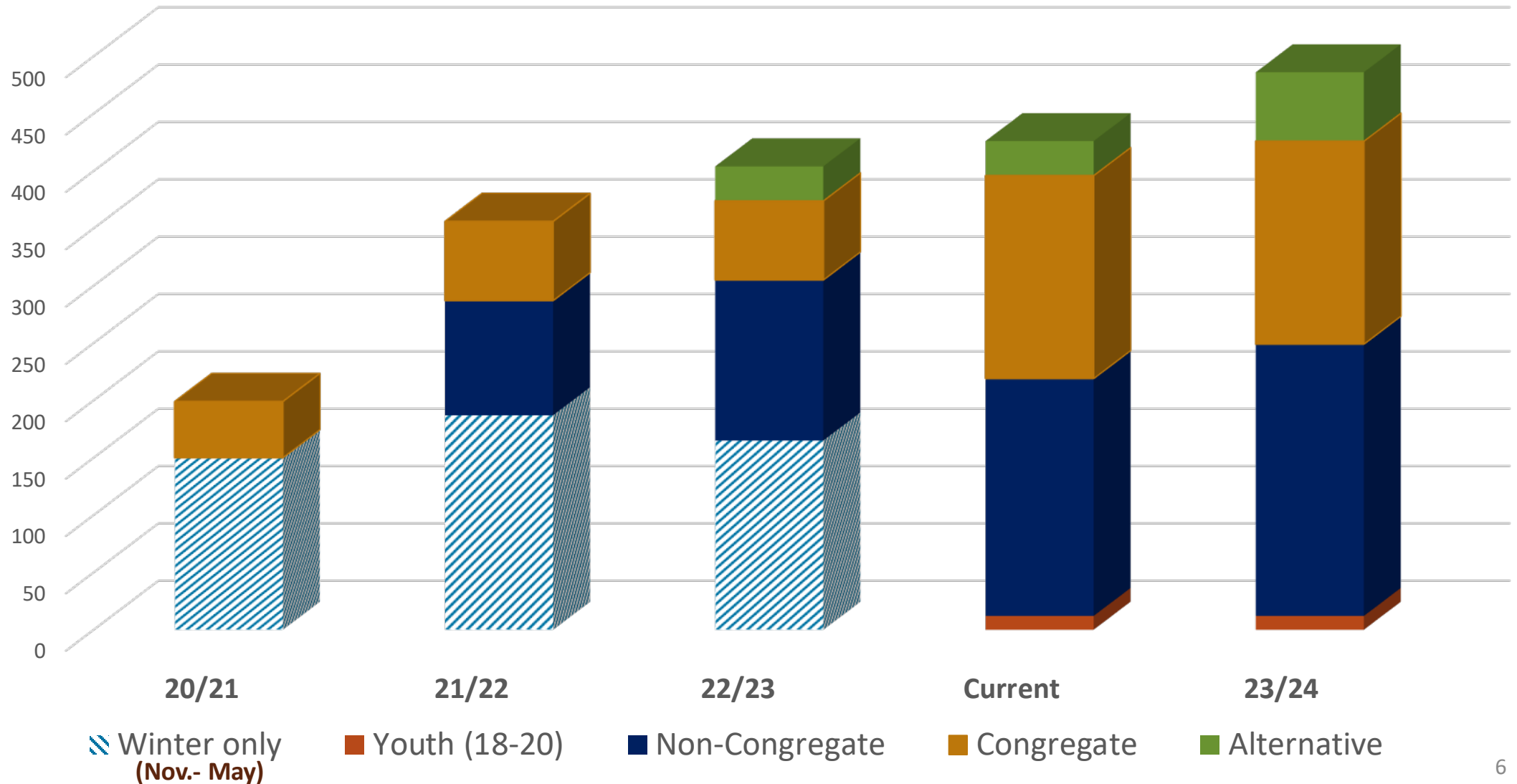


- Pop/up shelters activated for short durations due to extreme weather conditions or environmental concerns
- "No turn away" policy to protect people experiencing homelessness from the elements
- Guidelines for activation maintained through regional coordination





# Shelter System Capacity



# Shelter Capacity by Location

Location	Actual	2023-24
CoC	96	96
Hillsboro	115	115
Beaverton	85	85
Southeast WC	60	90
Western WC	70	70
TBD	0	30
<b>TOTAL WC</b>	<b>426</b>	<b>486</b>

# Shelter Capacity by Type

Type	Actual	2023-24
Congregate	177	177
Non Congregate	207	237
Alternative	30	60
Youth	12	12
<b>Total</b>	<b>426</b>	<b>486</b>



# Executive Order 23-2

On January 10th, 2023, Gov. Tina Kotek signed an executive order declaring a state of emergency in much of Oregon due to homelessness. The Governor's office is directing Oregon Housing and Community Services (OHCS) and the Oregon Department of Emergency Management (OEM) to support local Continuum of Cares (CoC) and their partners to implement this executive order and achieve the following statewide goals:

- Prevent homelessness for at least 8,750 households statewide
- Increase shelter capacity in emergency areas by 600 units, and
- Rehouse at least 1,200 households statewide.

Washington  
County EO  
Targets

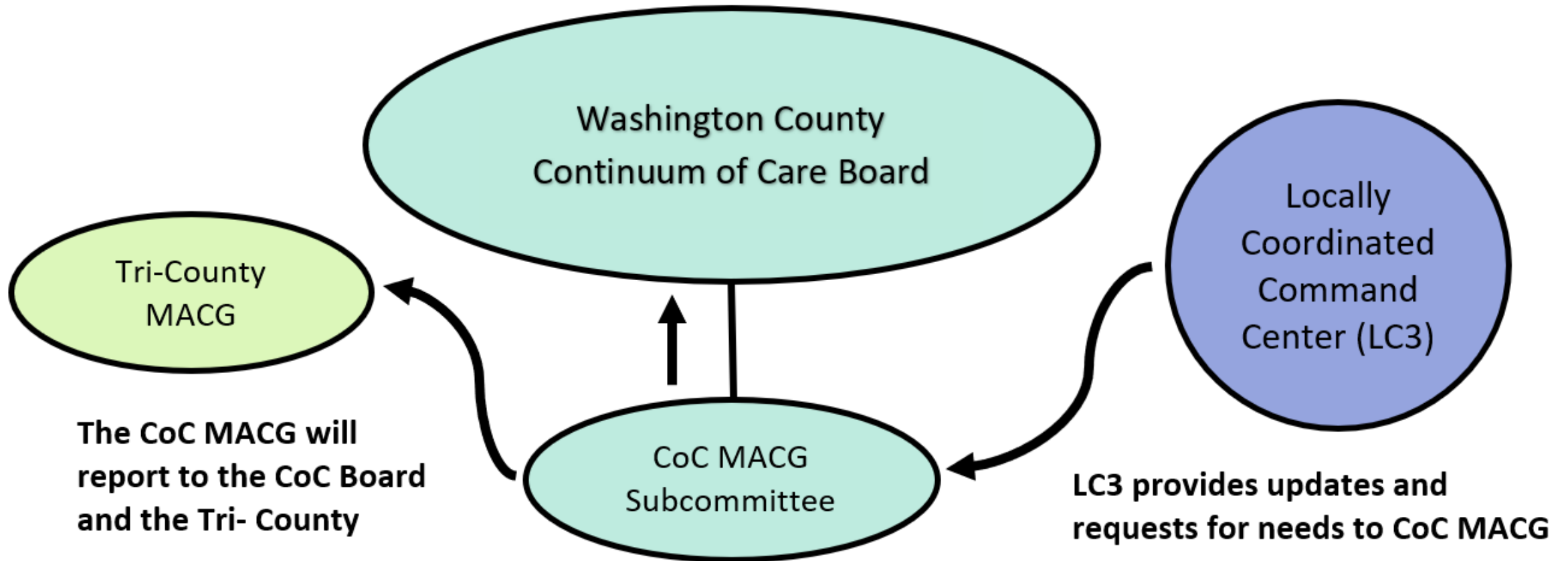
673 Households prevented from homelessness through the Oregon Eviction Diversion Prevention Program (ORE-DAP) with Community Action

60 NEW permanent shelter beds created

120 Households housed



# Multi Agency Coordinating Group



# Multi Agency Coordinating Group

---

- MAC Group Definition and Composition
  - Multiagency Coordination Groups (MAC Group) are part of the off-site incident management structure of National Incident Management System(NIMS).
- MAC Groups are also sometimes referred to as policy groups.
- MAC Group members are typically agency administrators, executives or their designees from stakeholder agencies or organizations impacted by and with resources committed to the incident. The MAC Group may also include representatives from non-governmental organizations such as businesses and volunteer organizations.

# Multi Agency Coordinating Group

---

- During incidents, MAC Groups:
  - Act as a policy-level body
  - Support resource prioritization and allocation
  - Make cooperative multi-agency decisions
  - Enable decision making among elected and appointed officials and the Incident Commander responsible for managing the incident.
- The MAC Group does not perform incident command functions, nor does it replace the primary functions of EOCs or other operations, coordination, or dispatch organizations.

# Guidance to Date- Shelter

---

- Shelter must be “low-barrier”
  - Low and no barrier policies allow homeless individuals and households to access shelter, housing and services without preconditions such as sobriety, compliance with treatment plan, no pets, or agreement to participate in specific programs, activities or classes.
  - These policies allow the most in need to have access to shelter and housing.
  - Technical assistance is available in order to modify shelter policies to meet this definition.

# Guidance to Date- Shelter

---

- Low Barrier Shelters best practices include:
  - Shelter has minimal expectations or requirements of people seeking shelter
  - Shelter focuses on addressing disruptive or dangerous behaviors rather than compliance to rules or case plans
  - Shelter welcomes self-defined family and kinship groups to seek shelter together
  - Shelter can identify financial resources that can support the adoption of low barrier policies and practices and supports extended or flexible hours and adapted service-delivery models
  - Shelter accommodates pets and belongings
  - Shelter intake process and housing navigation services coordinate closely with community-based outreach services and coordinated entry
  - Shelter creates flexible and predictable access for people seeking shelter

# Guidance to Date- Shelter

## General Shelter Habitability Requirements:

- Shelters must meet habitability requirements that include minimum safety, sanitation, and privacy standards as outlined in 24 CFR §576.403.
- Shelters must be structurally sound. Tents and other structures that do not meet these minimum standards are unallowable.
- Habitability must be documented as meeting these requirements.
- OHCS can provide technical assistance to ensure compliance with habitability requirements.

Shelter units may be in the form of non-congregate free-standing units if they meet the following criteria:

- Heat
- Electricity
- Insulation
- The ability to close and lock a door
- Hard-surface walls and roofing
- Plumbing must be available in the units



# Guidance to Date- Outreach

Encampments: “The term encampment is widely used by journalists and researchers to describe groups of people living in tents or other temporary structures in public spaces in cities across the country.”

- Features include:
  - Number of people residing at the location
  - Presence of some type of physical structures
  - Presence of personal belongings
  - Sense of social support or community.

## Note:

- Not all individuals experiencing unsheltered homelessness reside in encampments
- Responding to encampments is resource-intensive for local governments, costing cities between \$1,672 and \$6,208 per unsheltered individual per year (excludes police, fire, and health departments)

# Guidance to Date- Outreach

---

- Best Practices in Outreach:
  - Integrating housing problem-solving into street outreach
  - Flexible funding
  - Developing a “pool” of units to rehouse people directly from the encampment into a home
  - Shared housing opportunities
  - Encampments-specific prevention and shelter diversion to permanent housing or family reunification

# MAC G Funding

<b>Street Outreach</b>	<b>\$ 600,000</b>	120 Households housed - Housing-focused outreach and case management, Family reunification transportation assistance, Housing problem-solving assistance, Flexible emergency funding
<b>Emergency Shelter</b>	<b>\$ 5,750,750</b>	Establish two 30 unit pod shelters (multiple tentative locations identified), Extend 145 units of winter shelter - 80 Congregate, 65 non-congregate - slated to end 5/31/23 from 6/1/2023 to 11/1/2023 (185 nights @ \$110/night)
<b>Rapid Re-housing</b>	<b>\$ 550,565</b>	Housing Navigation and Rent Assistance for 25 Households
<b>HMIS</b>	<b>\$ 40,000</b>	Accurate data for analysis and reporting
<b>HMIS</b>	<b>\$ 10,000</b>	Additional software for non-HMIS users to share data with street outreach
<b>Administration</b>	<b>\$ 1,042,696</b>	Cover costs related to implementation
<b>Total</b>	<b>\$ 7,994,011</b>	

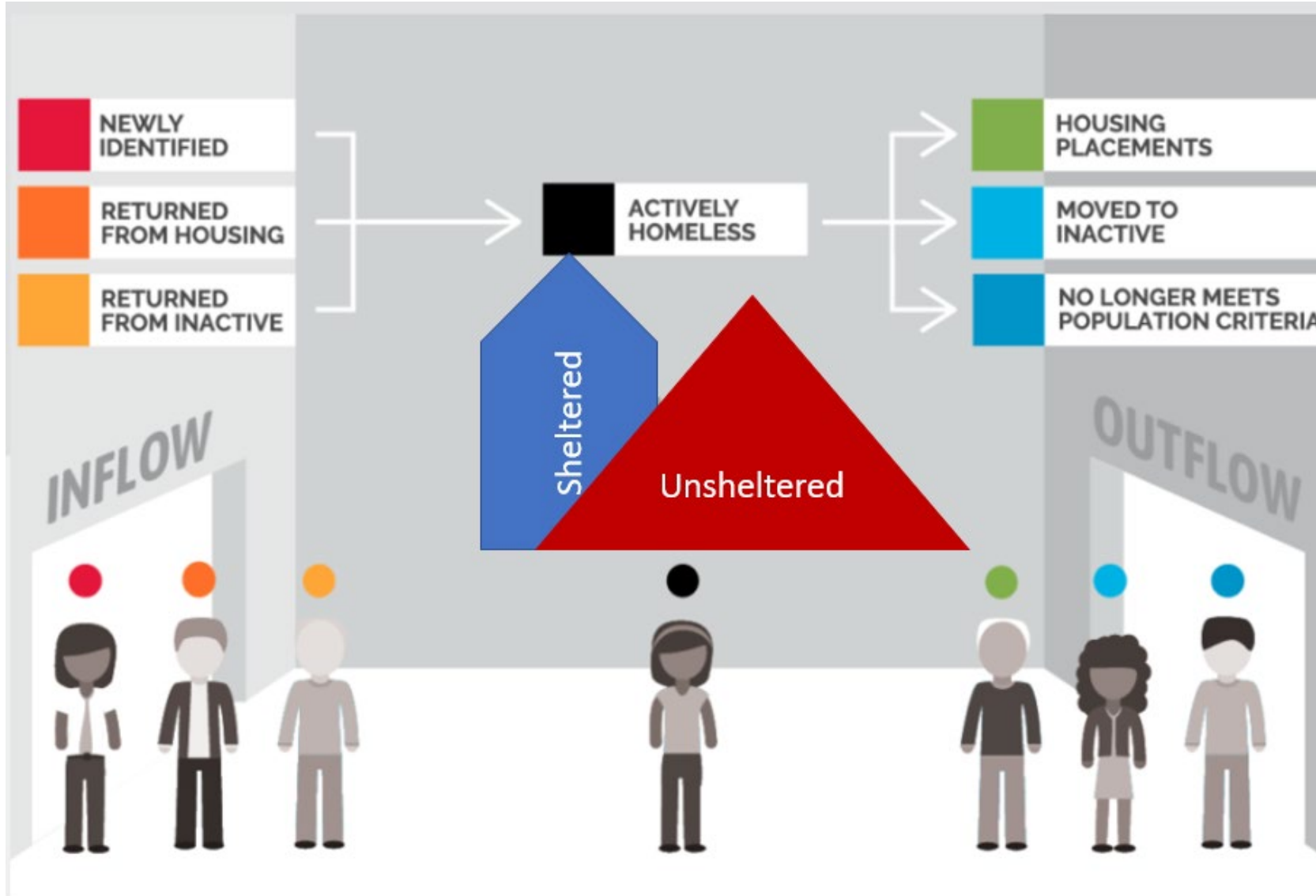


# Local Coordinated Command Center (LC3)

---



# What is Inflow and Outflow?



# LC3 Members

## County Lead(s)

- Washington County Homeless Programs Supervisor: DeAnna Negrete
- Washington County Program Manager: Katherine Galian

## Local Based Homeless Service Providers with HMIS access

- Community Connect
- Shelter
- Outreach
- Housing Program

# Intensive Weekly Meetings



Targeted Street Outreach- intensive outreach in targeted area



Outreach Updates- discussing new participants in the targeted area



By-Name List- collaborative case planning and system navigation



Referrals and Follow up- coordination and collaborative problem solving

# Weekly Meeting Structure

Tuesday (30 minutes- Virtual)

- New participants

Wednesday (90 minutes- In person)

- In depth by name list review

Thursday (30 minutes- Virtual)

- Referral and follow up

Daily Outreach Schedule

- Provided to LC3





# Location Selection Criteria

---

A network diagram is shown on a white surface. It consists of several colorful pushpins (red, blue, green, yellow) connected by thin brown string. The pushpins are arranged in a roughly circular pattern, with some string connecting them to form a network. The background is a plain white surface.

# Goals of the Selection Process

- Transparency on process
- Identify locations of priority
- Establish an objective process for prioritizing locations

# Identifying Locations



SPECIFIC LOCATION



UNSHELTERED  
INDIVIDUALS



COMMUNITY  
CONCERNS

# Location Scoring Criteria

- Each category will be given a score of 1-5
  - Weighted equally
  - Final score will be 1-100
- MACG will determine schedule based on scores
- Location can be delayed depending on readiness
- Scores are not stagnant. We will update with shifts in the population and trends.

# Criteria Categories

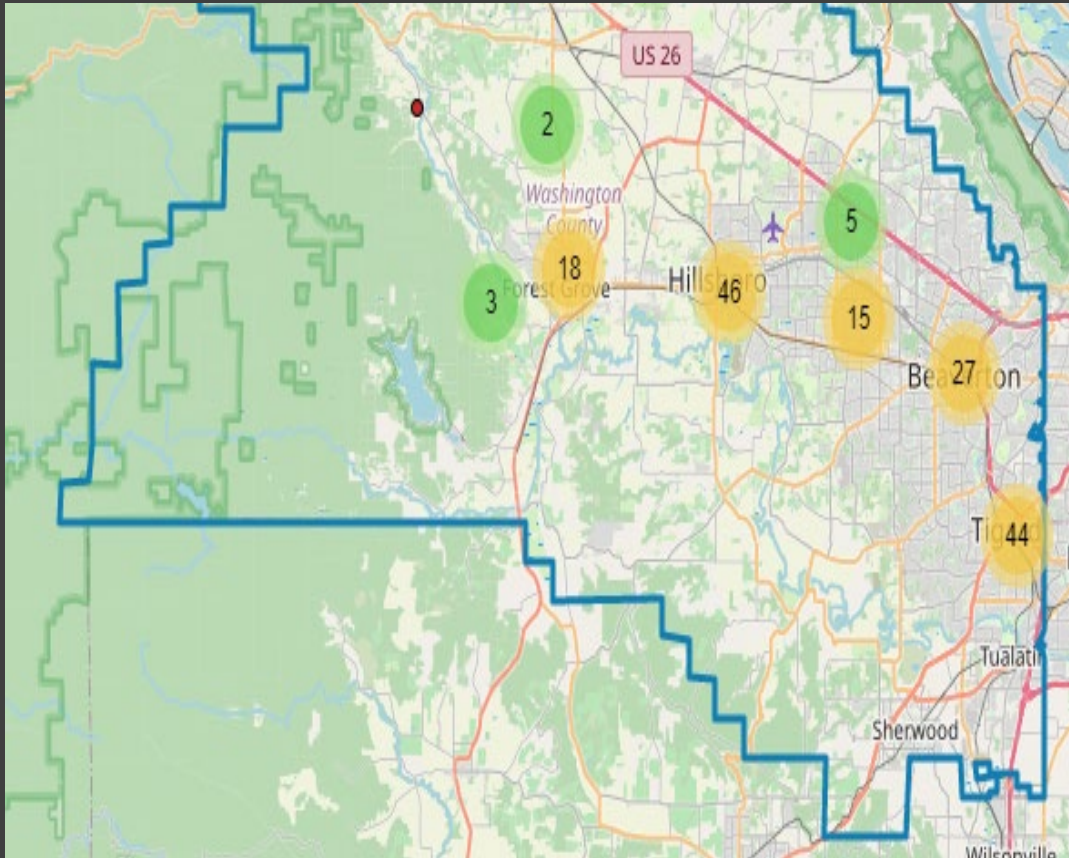
- 2023 Point in Time County Data
- Assessed Population Density
- Population Vulnerability
- Resource Deficit
- Community Prioritization



# Point in Time Count

- Ranking cities/regions in the county based on the 2023 count
  - Ranking will be assigned score
  - Any location within that city/region will be given the same score
  - If on the edge of several cities or regions highest score will be given
- Scoring
    - 5- Most dense population in city/region
    - 4
    - 3
    - 2
    - 1- Least dense population in city/region

# 2023 Point in Time Count Scoring



- Ranking and Scoring

- 5- Hillsboro: 47
- 4- Tigard/SE: 44
- 3- Western Region: 32
- 2- Beaverton: 27
- 1- Aloha: 20

# Assessed Population Density

- Understanding that the PIT count does not always capture an accurate picture of the population. This will give an opportunity to gather collateral information about the population.
- Scoring
  - 5- 40+ participants
  - 4- 30-39 participants
  - 3- 20- 29 participants
  - 2- 10-19 participants
  - 1- Less than ten participants



# Population Vulnerability

- Locations with participants that are from vulnerable populations and/or populations that are disproportionately impacted by homelessness
  - Age: under 25/older than 55 years
  - BIPOC
  - LGBTQ+
  - Chronic homelessness
  - Disabilities
  - Veterans
- Scoring
  - 5- More than 50%
  - 4- Between 40-49%
  - 3- Between 30-39%
  - 2- Between 20-29%
  - 1- Less than 20%

# Resource Deficit

- Isolated areas that are lacking resources to move individual out of homelessness
  - Lacking transportation
  - Greater distance to Homeless Service Programs
  - Access to meals/food
- Scoring
  - 5- Limited resources available and participants are difficult to locate
  - 4
  - 3
  - 2
  - 1-Resources are readily available and participants are easily located

# City Prioritization

- You are the expert(s) in your city/region
  - Considerations
    - Feedback from city departments
    - Historical concerns
  - What are areas that can be addressed after the primary area
- Scoring
    - 5- Top Priority and Concern. We cannot address this location without all of the support from the LCCC
    - 4
    - 3
    - 2
    - 1- Lowest Priority and Concern. The city/region feels confident to address this after the initial support from LCCC

# Location Selection Scorecard

Location Selection Scoring							
<b>Encampment:</b>	Highway 47	<b>Coordinates:</b>	45.530155, -123.093993				
<b>Location:</b>	Highway 47 and Porter Rd. - North side of highway.						
<b>Jurisdiction:</b>	Unincorporated Washington County						
<b>Date of scoring:</b>	4/3/2023						
<b>On-site assessment conducted by:</b>	Alli Holmes	<b>Date:</b>	4/4/2023				
<b>City/Region prioritization conducted by:</b>	Alli Holmes alli_holmes@washingtoncountyor.gov						
Criteria	Assessed Score (0 to 5)	Reported Score (0 to 5)	Weight	Assessed Weighted Score	Reported Weighted Score	Score	Notes
Point in Time Count	3	3	20	12	12		(5) Most dense population in city/region; (1) Least dense population in city/region
Assessed Population Density	5	5	20	20	20		(5) 40+ participants; (4) 4-30-39 participants; (3) 20-29 participants; (2) 10-19 participants; (1) Less than ten participants
Population Vulnerability	5	5	20	20	20		Younger than 25 and older than 55 years old represent (5) More than 50%; (4) Between 49-40%; (3) Between 39-30%; (2) Between 29-20%; (1) Less than 20%
Resource Deficit	4	4	20	16	16		(5) Limited resources available and participants are difficult to locate; (1) Resources are readily available and participants are easily located
City/Region Prioritization	5	5	20	20	20		(5) Top Priority and Concern. We cannot address this location without all of the support from the LCCC; (1) The city/region feels confident to address this after the initial support from LCCC. Lowest Priority and
<b>Total =</b>				<b>88</b>			

**NOTES:** Encampment runs from NW Martin to Sunset Dr on north side of Highway 47



Location	Jurisdiction	Coordinates	Score
Highway 47	WashCo/FG	45.530155, -123.093993	88
Brown Natural Area	Tigard	45.418936, -122.756808	84
OEA Land & 72nd	Tigard	45.437318, -122.750874	80
Main by Symposium Coffee	Tigard	45.430741, -122.771137	70
Central Beaverton	Beaverton	45.490323, -122.807042	68
Katherine St & Tigard St	Tigard	45.437318, -122.750874	66
Shute Park	Hillsboro	45.513586, -122.974639	62
SE 6th Area	Hillsboro	45.519151, -122.980788	62
NE Bennett	Hillsboro	45.557414, -122.911574	62
Dairy Creek	Hillsboro	45.519696, -123.007966	62
RR @ Pioneer Cemetery	Hillsboro	45.521733, -123.009453	60
Downtown Hillsboro	Hillsboro	45.522656, -122.988840	60
Brookwood & Ihly	Hillsboro	45.524774, -122.936533	60
Tanasbourne	Hillsboro	45.538355, -122.867642	58
Fairgrounds	Hillsboro	45.527833, -122.952583	56
Tigard Library	Tigard	45.422465, -122.764220	56
Sunset Esplanade	Hillsboro	45.505363, -122.957492	54
185th & Pheasant	WashCo	45.506068, -122.867095	48
Main & Century (Bridge)	Hillsboro	45.520417, -122.913309	42
Cornelius Pass & Wilkins	Hillsboro	45.526871, -122.899872	40
NE Birch	Hillsboro	45.528813, -122.907049	38
Cornell & 118th	WashCo	45.527087, -122.796123	32

# LC3 Timeline

Date	Location	Team
*Please note that the dates and schedule is subject to change based on direction from the MACG.		
May 8th to June 23rd	Hwy 47: Forest Grove/Unincorporated Washington County	Forest Grove Foundation Open Door
June 26th to August 11th	Brown Natural Area: Tigard	Just Compassion New Narrative
August 14th to September 30th	Downtown: Beaverton	GGNW Open Door
October 2nd to November 11th	Shute Park: Hillsboro	Open Door PHC

# Phases of LC3

## Engagement

- County Lead will reach out to community stakeholders to build LC3 team. Stakeholders include city partners, homeless service providers, and community providers.

## Active

- LC3 will be meeting three times a week to coordinate services and resources for those on the by name list for the specified location. County Lead will communicate with city partners and MACG without HMIS access.

## Transition

- Coordinate care for those participants on the by name list. Outreach teams assigned to the location will continue to provide outreach services. Additional resources will be provided based on needs. Outreach teams will continue to be supported by Washington County Housing- Homeless Services.

Week of:	24-Apr	1-May	8-May	15-May	22-May	29-May	5-Jun	12-Jun	19-Jun
<b>Location</b>	HWY 47	HWY 47	HWY 47	HWY 47	HWY 47	HWY 47	HWY 47	HWY 47	HWY 47
<b>Phase</b>	Engagement	Engagement	Active	Active	Active	Active	Active	Active	Transition
<b>County Contact</b>	DeAnna Negrete	DeAnna Negrete	DeAnna Negrete	DeAnna Negrete	DeAnna Negrete	DeAnna Negrete	DeAnna Negrete	DeAnna Negrete	DeAnna Negrete
<b>City Contact</b>									
<b>Outreach Team</b>			Forest Grove Foundation	Forest Grove Foundation	Forest Grove Foundation	Forest Grove Foundation	Forest Grove Foundation	Forest Grove Foundation	Forest Grove Foundation
<b>Outreach Team</b>			Open Door	Open Door	Open Door	Open Door	Open Door	Open Door	Open Door

# HWY 47- LC3 Timeline





Department of Housing Services  
[www.co.washington.or.us/housing](http://www.co.washington.or.us/housing)