



**OPENING IN DOWNTOWN
HILLSBORO SOON!!!**

Vision/Mission

4D Recovery Vision: 4D envisions a future where systems, communities, and individuals work together to ensure that all people receive the support needed to **find and sustain recovery from substance use.**

4D Recovery Mission: Provide a variety of recovery support services to **young people** between the ages of **18-35** in partnership with **systems, communities, and individuals.**

RECOVERY-ORIENTED SYSTEMS OF CARE (ROSC)

A ROSC is a coordinated network of community-based services and supports that is person-centered and builds on the strengths and resilience of individuals, families, and communities to achieve abstinence and improved health, wellness, and quality of life for those with or at risk of alcohol and drug problems.

Partnerships, Partnerships,
Partnerships, Partnerships,
Partnerships, Partnerships,
Partnerships, Partnerships,
Partnerships, Partnerships

Criminal
Justice
System

DHS

Health Care
(hospitals)

**Recovery
Community
Centers
Serve as
Recovery
Hubs**



Recovery
Community

Education
System

Community
(including
social media)

A&D Treatment
System: Detox,
Residential,
Out-patient.

Other
Recovery
Support
Services

What is 4D, Exactly?

4D is a **Recovery Community Organization**, an organization that is run by people in recovery **and** provides peer-based support services while advocating on behalf of recovery communities.

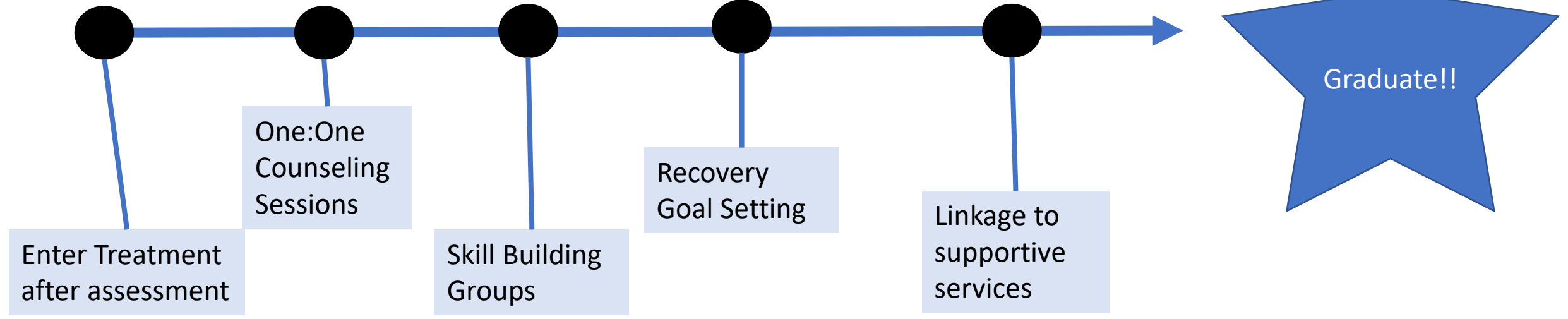
Defining Recovery Support Services

Recovery support services (RSSs) are nonclinical services that assist individuals and families to recover from alcohol or drug problems. They include social support, linkage to and coordination among allied service providers, and a full range of human services that facilitate recovery and wellness contributing to an improved quality of life. These services can be flexibly staged and may be provided prior to, during, and after treatment. RSSs may be provided in conjunction with treatment, and as separate and distinct services, to individuals and families.



4D Recovery Support Services

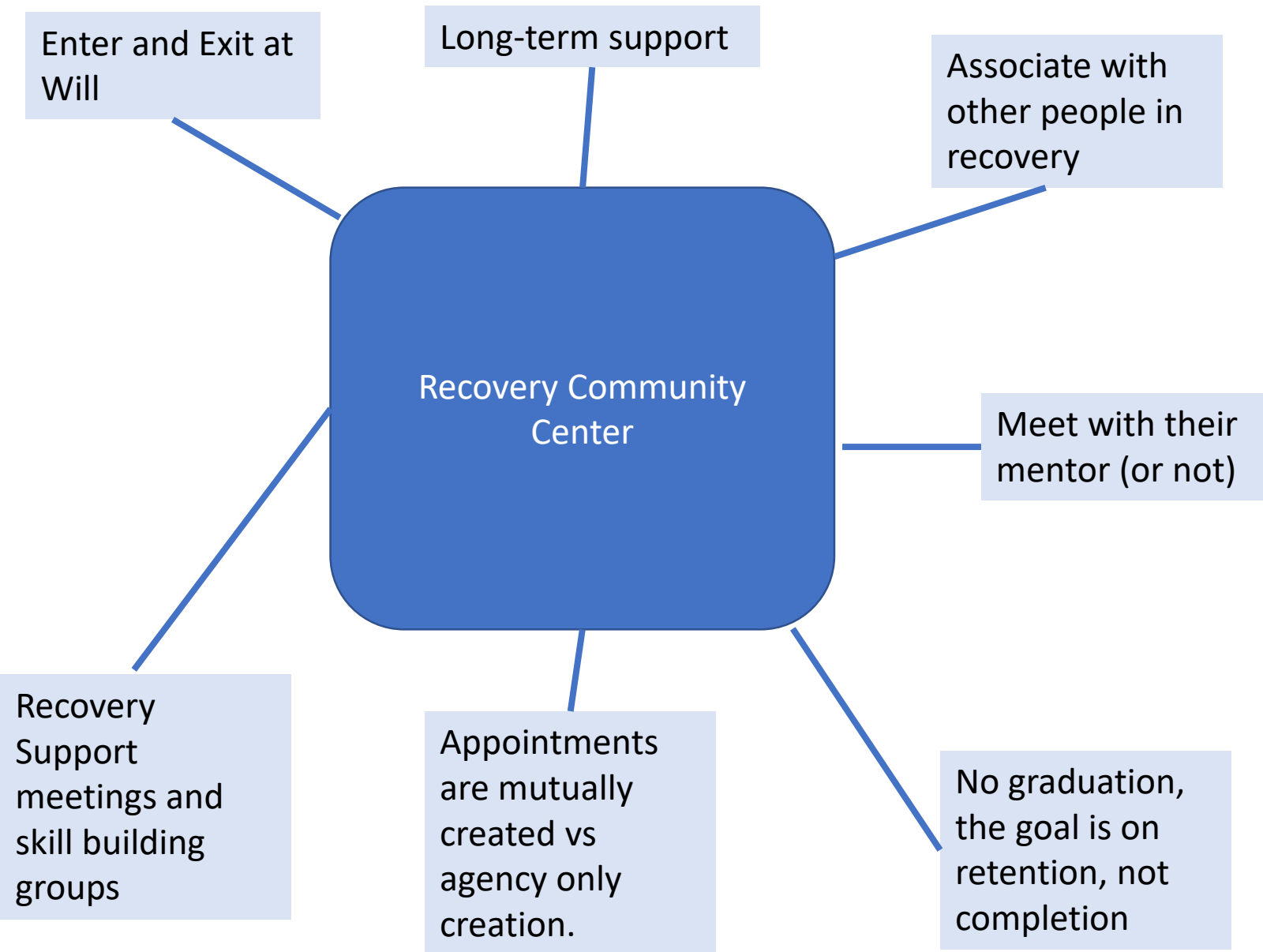
Addiction Treatment Process (Linear)



Clinically Directed

Goal is Graduation

Recovery Community Centers (unrestricted)



Client Directed

Goal is Retention

On average, 4D peer mentor clients have a 90-day retention rate of 45%.

Outpatient SUD treatment completion is about 52% and residential is about 65%, according to Treatment Episode Data Set –D.

Legislative Action



Community Education



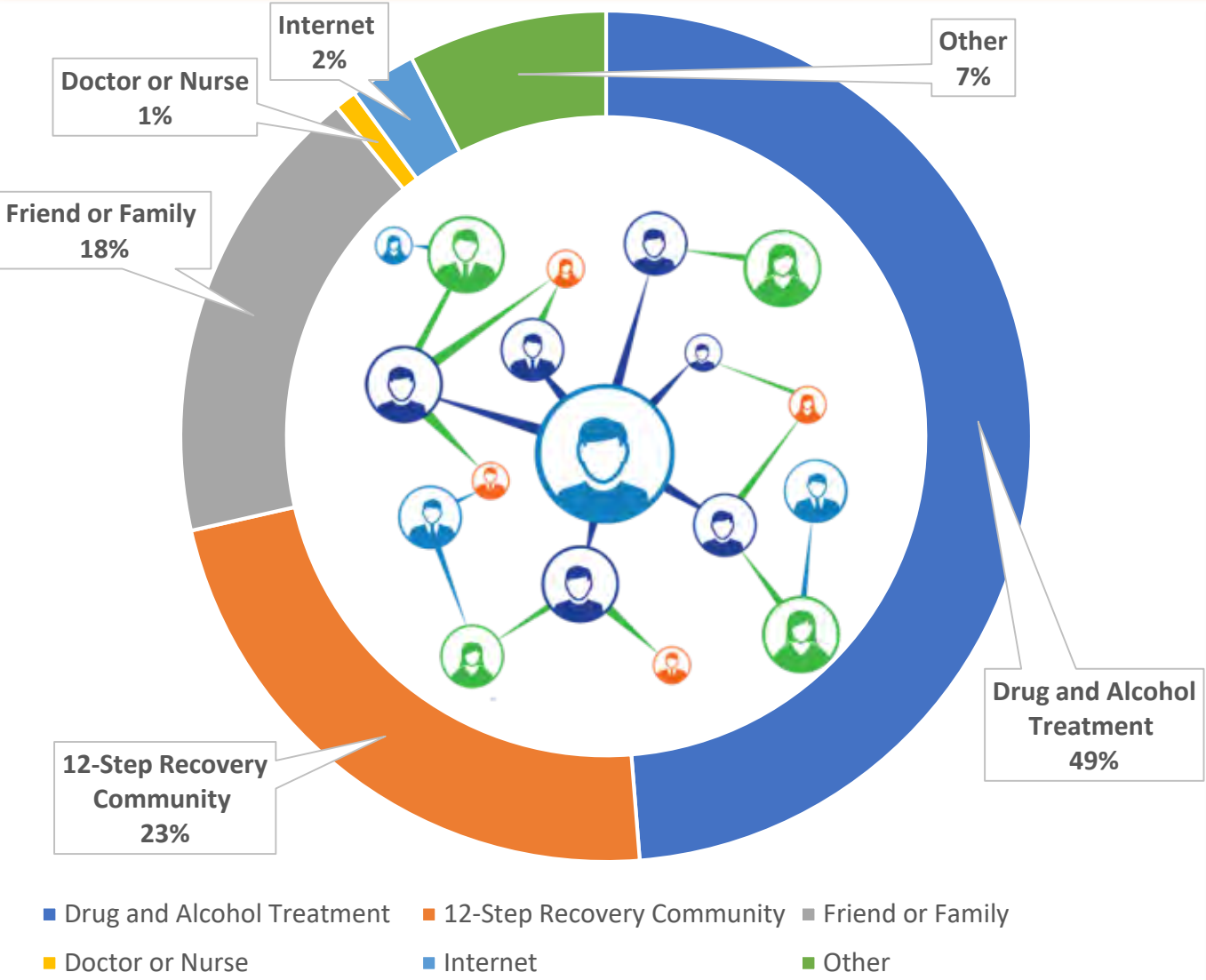
Policy Influence



Voting Literacy



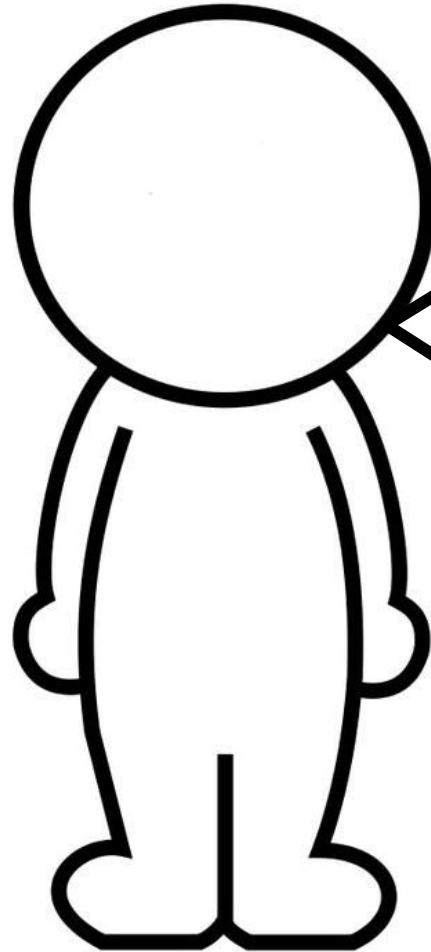
4D Recovery Center 2018 Referrals



4D Community Drop-in Center Health Insurance Demographics

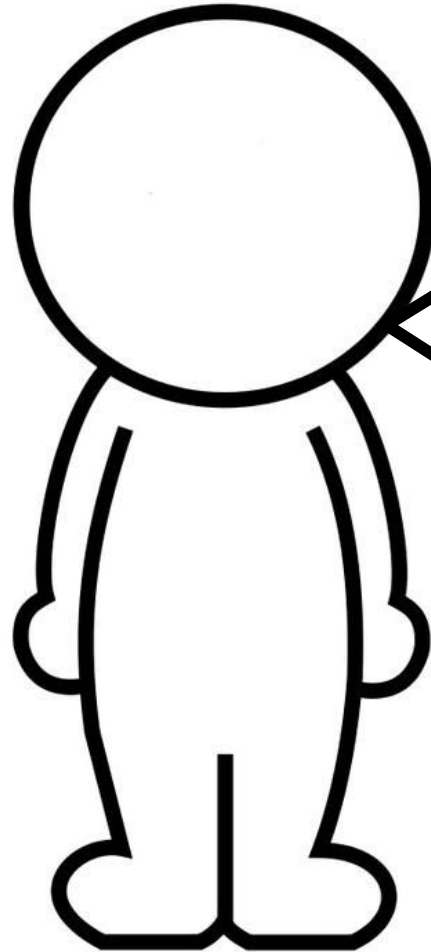
| Insurance Type | 4D 2018 |
|-------------------------|---------|
| Oregon Health Plan | 60% |
| Kaiser | 5% |
| Providence | 5% |
| Other Private Insurance | 20% |
| No insurance | 10% |

Who is
NOT a
good fit for
4D Services?



- Adolescents
- Adults over 35
- Those with little to no history of substance abuse
- Self-identifying not wanting or needing to resolve a substance use disorder (I only use once in a while, I have never experienced anything bad from using, I am mostly just depressed, etc)
- Those with only mental health, criminality, or behavioral issues
- Individuals not wanting to resolve a substance use disorder but need a place to go (dump jobs are a real thing we try to avoid)

Who *IS* a
good fit for
4D Services?



- Young adults 18-35
- Have a history of substance abuse
- Self-identify having substance use issues (I am an addict, I drink too much, drugs are really getting in the way, etc)
- Self-identifying wanting to resolve a substance use disorder (I need to quit, I want help quitting, I need treatment, I can't stop using on my own, etc.)
- Those needing recovery as a means to self-sufficiency.