

Climate Change and Public Health

Kathleen Johnson, MPH

Pronouns: She/Her

Community Environmental Health Sr. Program Coordinator

October 11, 2022



WASHINGTON COUNTY
OREGON

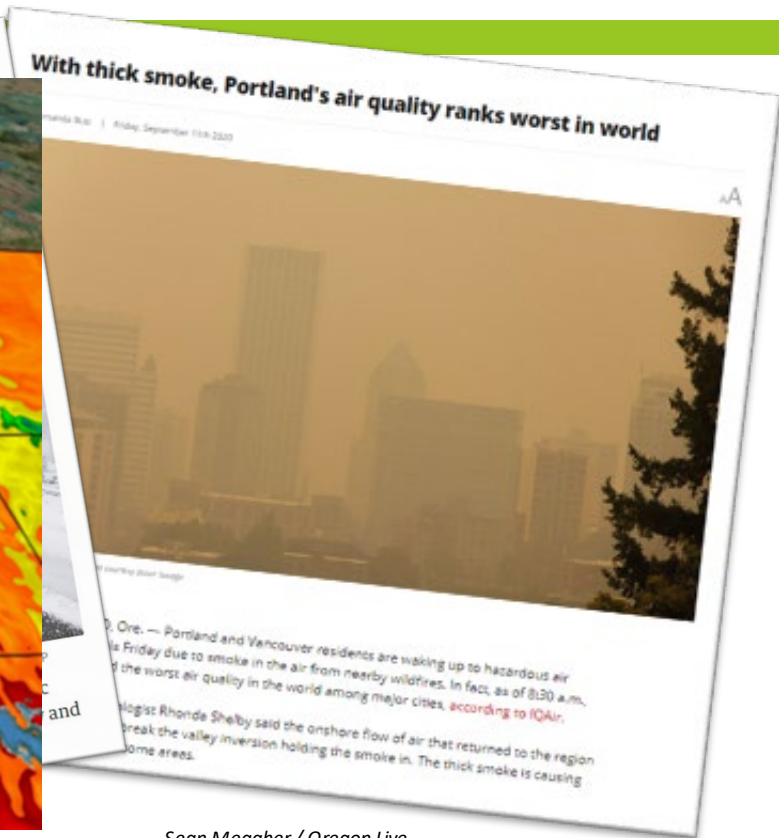
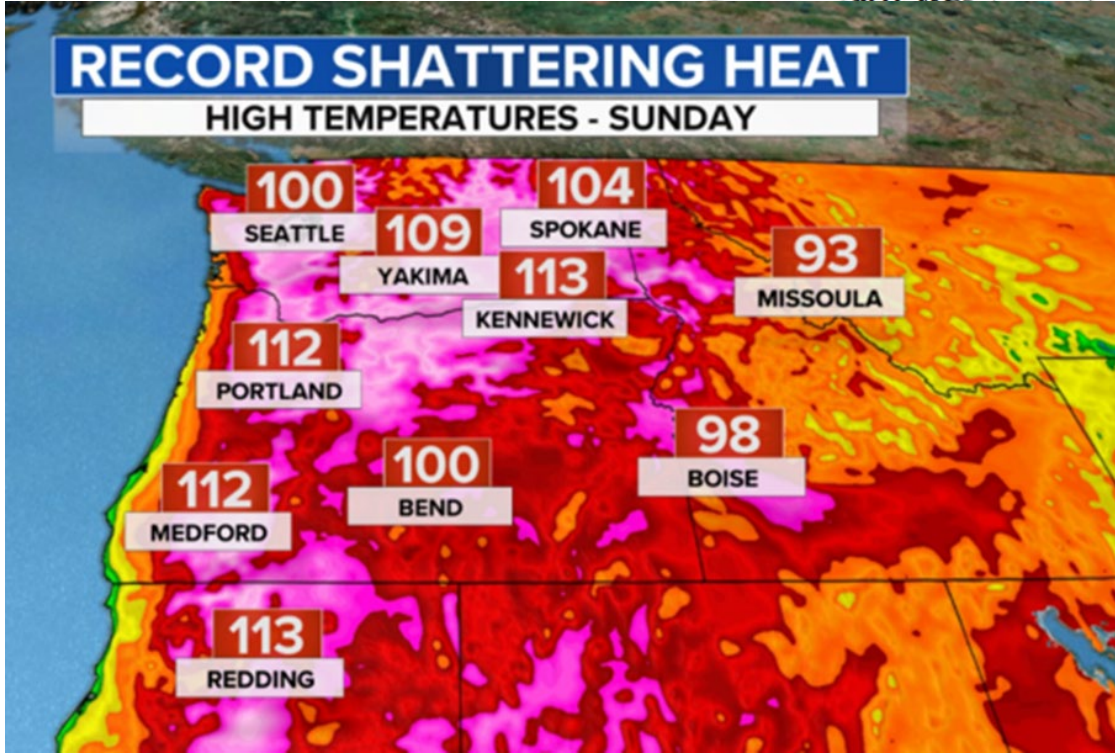
Department of Health and Human Services

Overview

2

- Climate events in Oregon
- Definitions and pathways
- Health Impacts in Washington County
- Program timelines and milestones
- Questions

Regional Climate Change Impacts



Climate and Health Definitions

4

- **Climate Change Mitigation-** avoiding and reducing emissions of heat-trapping greenhouse gases to prevent the planet from warming to more extreme temperatures
- **Climate Change and Health Adaptation-** actions to prepare for and adjust to new conditions to reduce harm and prevent illness
- **Climate Change Resilience-**the ability to survive, recover from, and even thrive in changing climatic conditions *(Public Health Institute, 2015)*

5

Exposure

The contact between a person and one or more biological, psychological, chemical, or physical stressors, including stressors affected by climate change

Sensitivity

The degree to which people or communities are affected, either adversely or beneficially, by their exposure to climate variability or change.

Adaptive Capacity

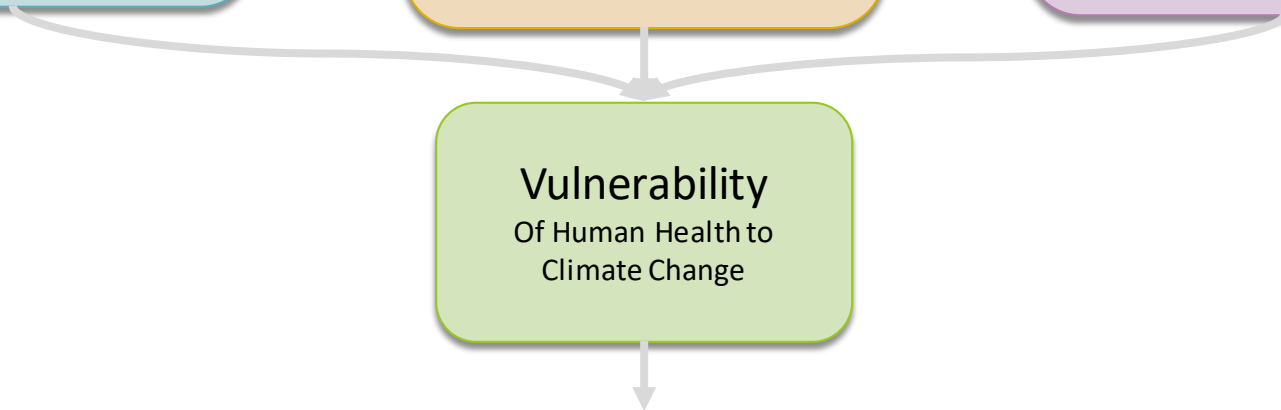
The ability of communities, institutions, or people to adjust to potential hazards such as climate change, to take advantage of opportunities, or to respond to consequences.

Vulnerability

Of Human Health to Climate Change

Health Outcomes

Injury, acute and chronic illness (including mental health and stress-related illness), developmental issues and death.



COMMUNITIES OF COLOR

Some communities of color living in risk-prone areas face cumulative exposure to multiple pollutants.

Adaptation plans that consider these communities and improve access to healthcare help address social inequities.



OLDER ADULTS

Older adults are vulnerable to extreme events that cause power outages or require evacuation.



Checking on elderly neighbors and proper emergency communication can save lives.

CHILDREN

Children have higher risk of heat stroke and illness than adults.



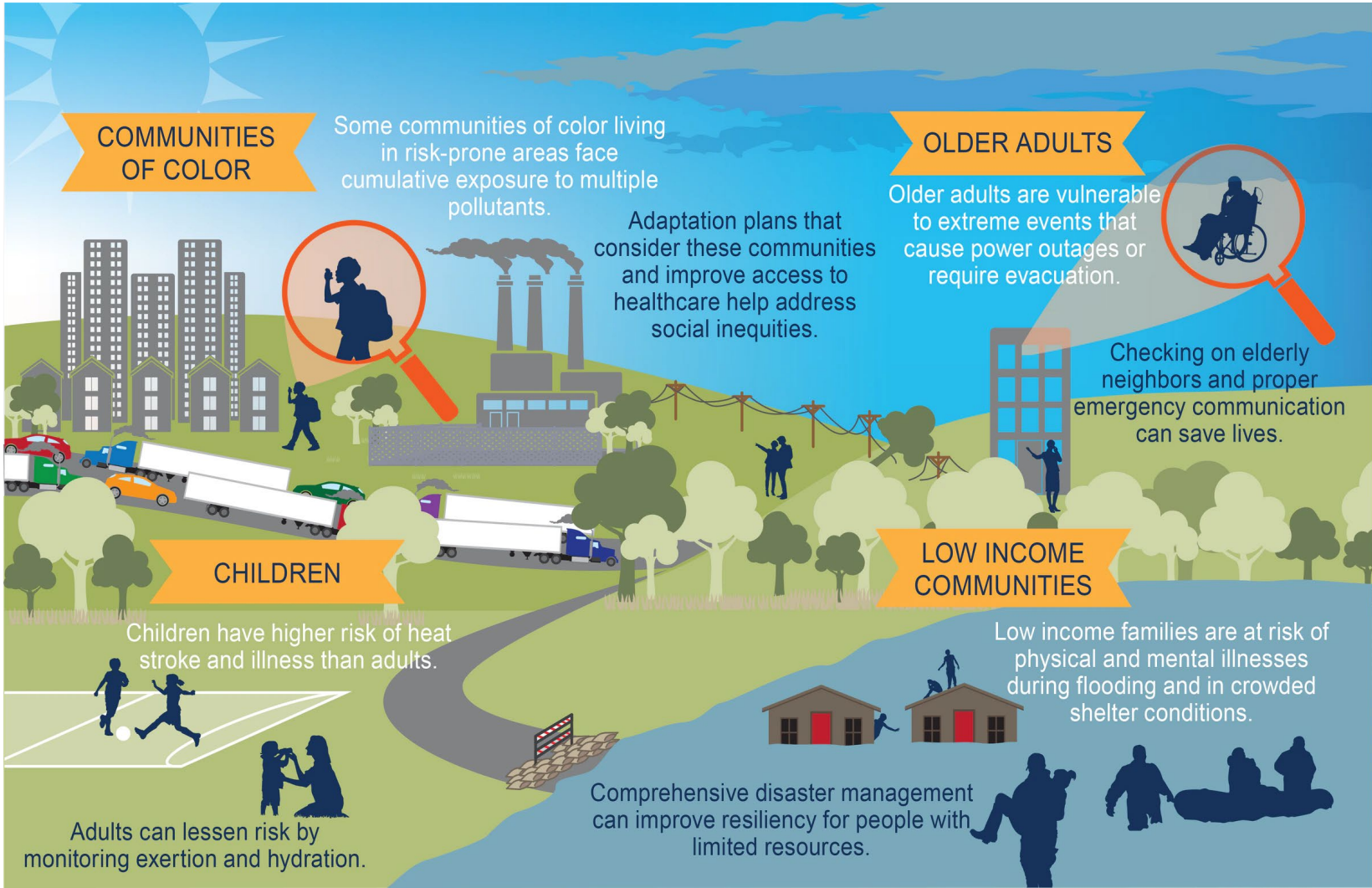
Adults can lessen risk by monitoring exertion and hydration.

LOW INCOME COMMUNITIES

Low income families are at risk of physical and mental illnesses during flooding and in crowded shelter conditions.



Comprehensive disaster management can improve resiliency for people with limited resources.



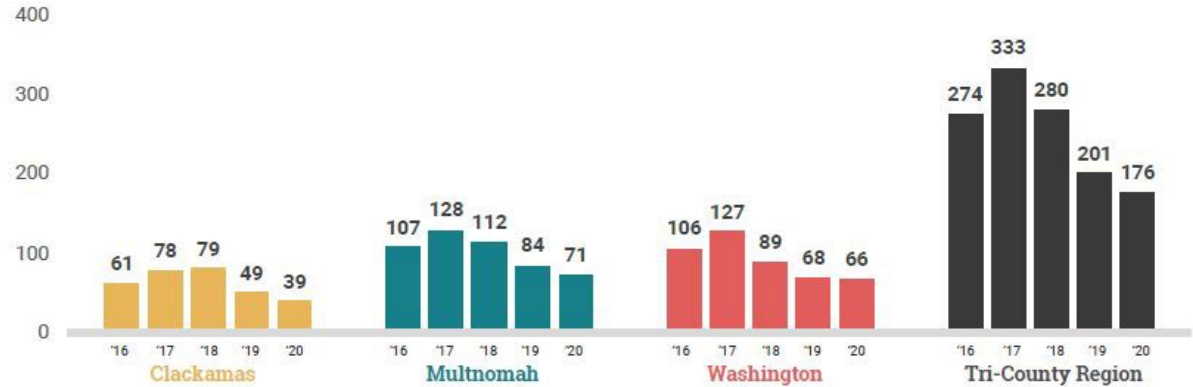
Health Impacts- Extreme Heat

7

Heat-related ED Visit Counts

May-Sept

2016-2020



Heat-related ED Visit Rates per 100,000

May-Sept

2016-2020



Health Impacts-Extreme Heat

8

- In 2021, ED visits for heat illness increased by 116% when compared to the average number of visits between 2015-2019
- In 2022, ED visits for heat illness increased by 50% when compared to the average number between 2015-2019

Health Impacts- Air Quality

Figure 18. Allergic Disease ED Visit Counts, May-Sept, 2016-2020

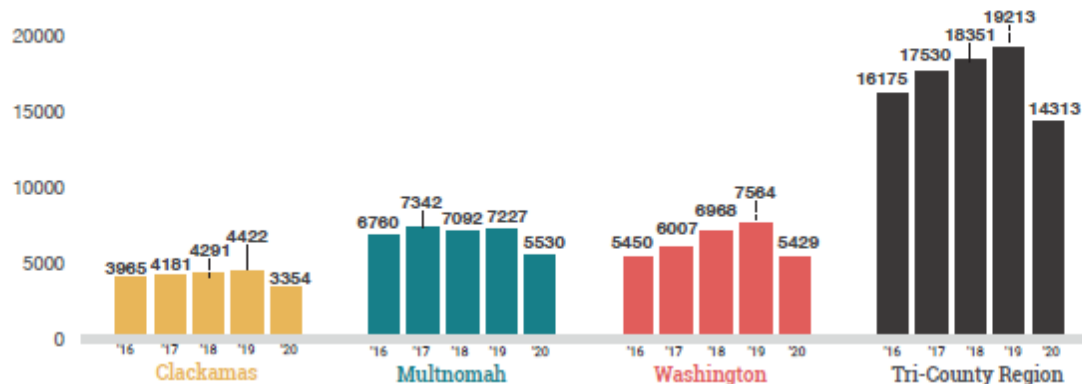
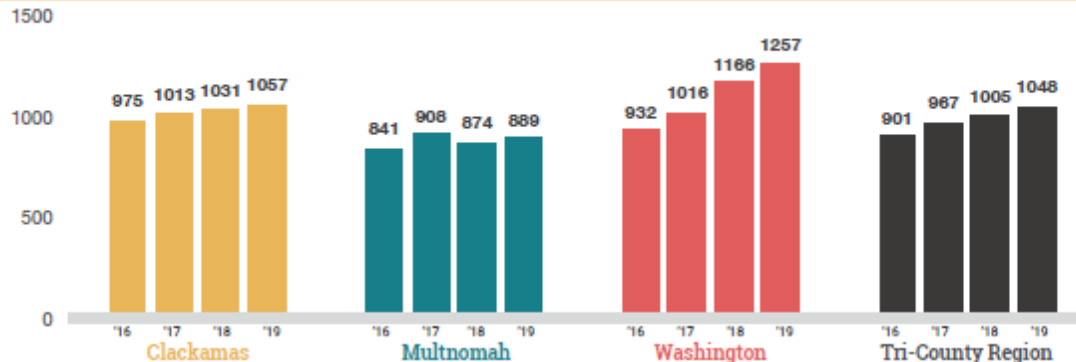


Figure 19. Allergic Disease Symptom ED Visit Rate per 100,000 Persons, May, Sept, 2016-2020

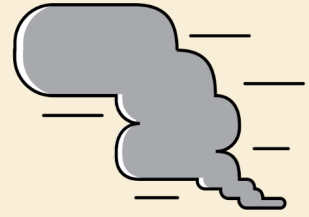
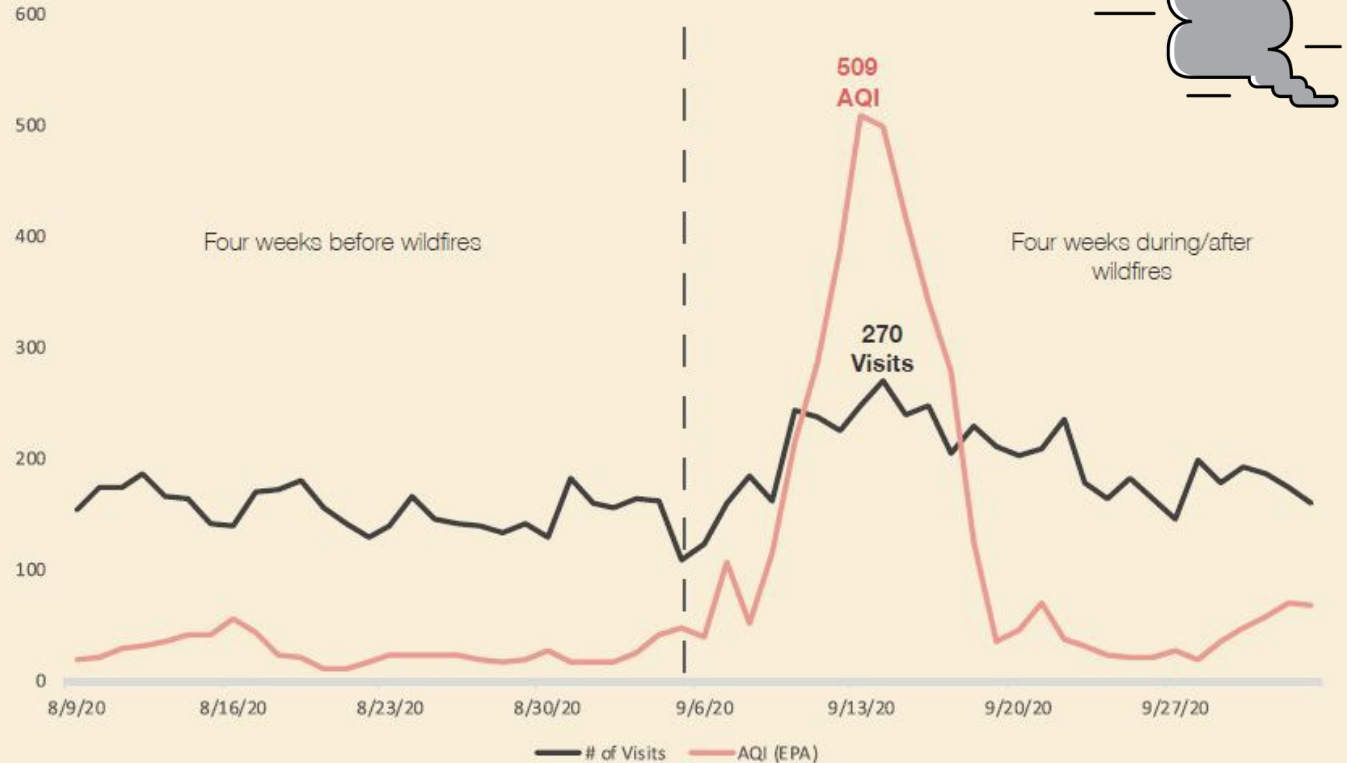


Health Impacts- Air Quality

2020 Wildfire Season

Despite an overall decrease of asthma-like symptoms visits for the year of 2020, there were direct increases in ED visits in response to the September wildfires.

Average daily visits in the tri-county area increased by **129%** the four weeks during/after the wildfire in comparison to the four weeks before.

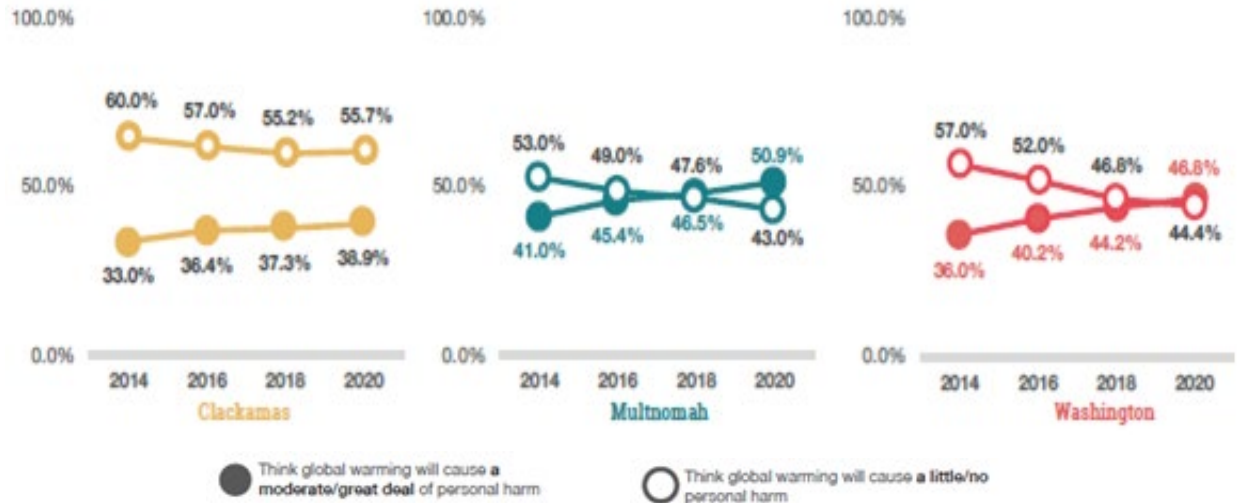


Health Impacts- Mental Health

Immediate and long-term impacts of climate change on the environment, society, and infrastructure can lead to trauma, shock, stress, anxiety, and depression.

Estimated Percentage of People Who Think Global Warming Will Cause Personal Harm

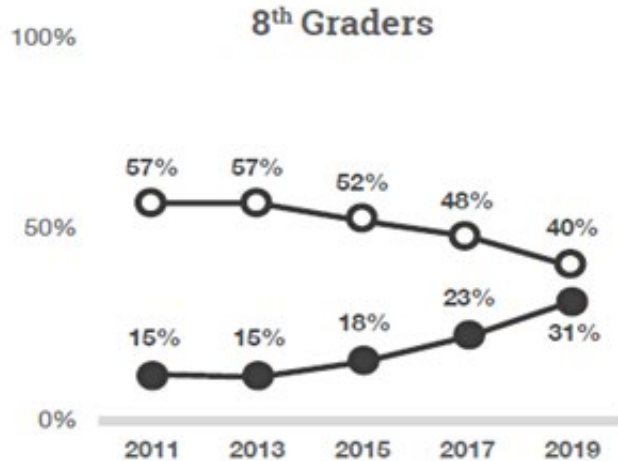
Yale Climate Opinion Survey



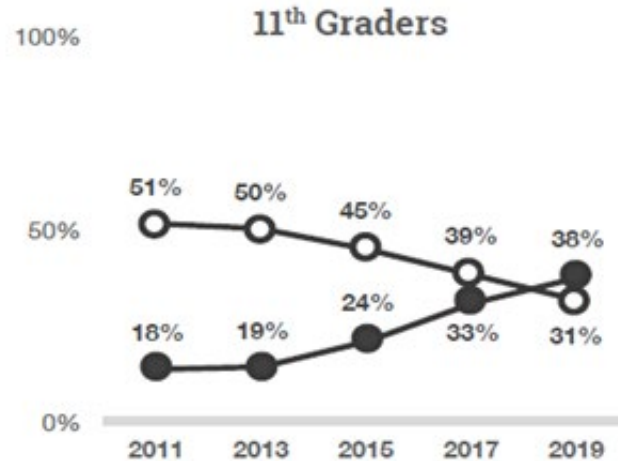
Health Impacts- Mental Health

Student Self-Rating of General Emotional and Mental Health

Oregon Healthy Teen Survey

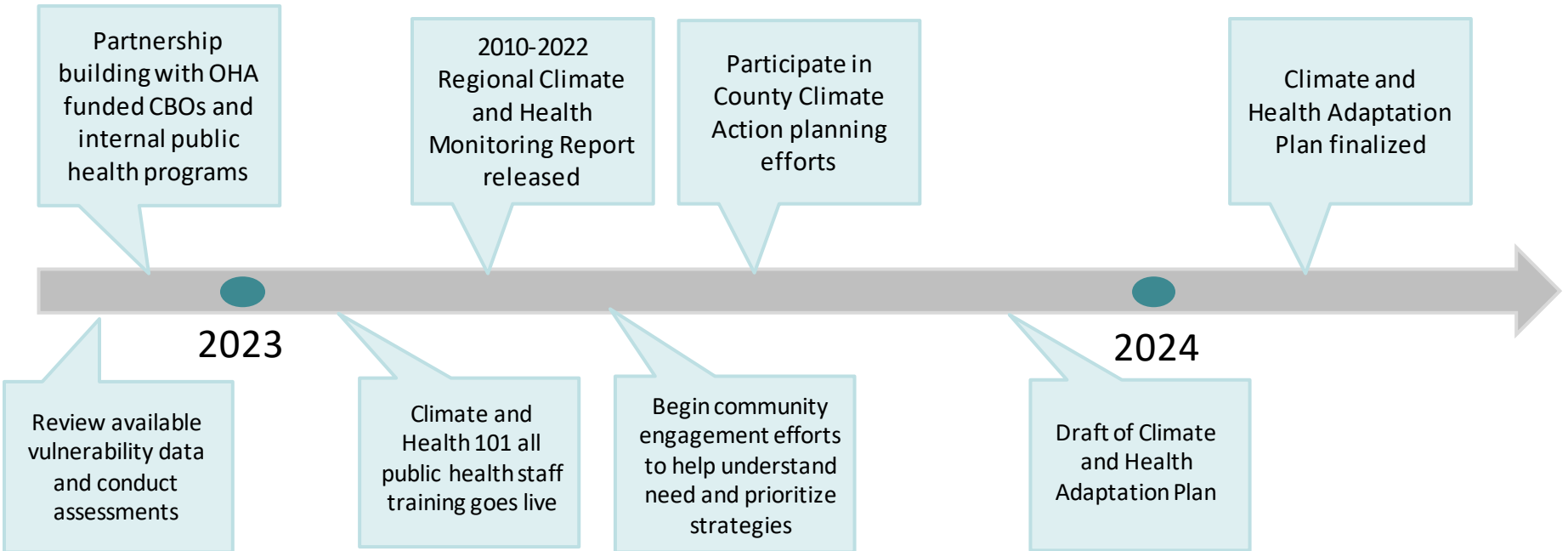


● Reported **fair or poor** emotional and mental health



○ Reported **excellent or very good** emotional and mental health

Public Health Timelines & Milestones



Questions?

Resources

15

[2021 Regional Climate and Health Monitoring Report](#)

[2022 OHA Climate and Youth Mental Health Report](#)