



# COVID-19 Pandemic Projections and Update

**Marie Boman-Davis, PhD, MPH, MCHES**  
Public Health Division Manager  
Local Public Health Administrator

**Christina Baumann, MD, MPH**  
Health Officer, Public Health Division  
Tri-County Health Officer

| June 2, 2022

Department of Health and Human Services

[www.co.washington.or.us](http://www.co.washington.or.us)

# Presentation Summary



## Background Updates

CDC community levels, Washington County level

## Common Questions

Current pandemic status and projections; summer and fall

## Planning Considerations

Seasonal surges, recovery and preparedness

# CDC COVID-19 Community Levels

COVID-19 Community Levels – Use the Highest Level that Applies to Your Community				
New COVID-19 Cases Per 100,000 people in the past 7 days	Indicators	Low	Medium	High
Fewer than 200	New COVID-19 admissions per 100,000 population (7-day total)	<10.0	10.0-19.9	≥20.0
	Percent of staffed inpatient beds occupied by COVID-19 patients (7-day average)	<10.0%	10.0-14.9%	≥15.0%
200 or more	New COVID-19 admissions per 100,000 population (7-day total)	NA	<10.0	≥10.0
	Percent of staffed inpatient beds occupied by COVID-19 patients (7-day average)	NA	<10.0%	≥10.0%

Source: <https://www.cdc.gov/coronavirus/2019-ncov/science/community-levels.html>, Updated March 24, 2022

# CDC COVID-19 Community Levels

Low	Medium	High
<ul style="list-style-type: none"> <li>Stay <u>up to date</u> with COVID-19 vaccines</li> <li><u>Get tested</u> if you have symptoms</li> </ul>	<ul style="list-style-type: none"> <li>If you are <u>at high risk for severe illness</u>, talk to your healthcare provider about whether you need to wear a mask and take other precautions</li> <li>Stay <u>up to date</u> with COVID-19 vaccines</li> <li><u>Get tested</u> if you have symptoms</li> </ul>	<ul style="list-style-type: none"> <li>Wear a <u>mask</u> indoors in public</li> <li>Stay <u>up to date</u> with COVID-19 vaccines</li> <li><u>Get tested</u> if you have symptoms</li> <li>Additional precautions may be needed for people <u>at high risk for severe illness</u></li> </ul>
<p>People may choose to mask at any time. People with <u>symptoms, a positive test, or exposure</u> to someone with COVID-19 should wear a mask. Masks are recommended in indoor public transportation settings and may be required in other places by local or state authorities.</p>		

Source: <https://www.cdc.gov/coronavirus/2019-ncov/science/community-levels.html>, Updated March 24, 2022

# CDC COVID-19 Community Levels

## Washington County, Oregon

[State Health Department](#) 

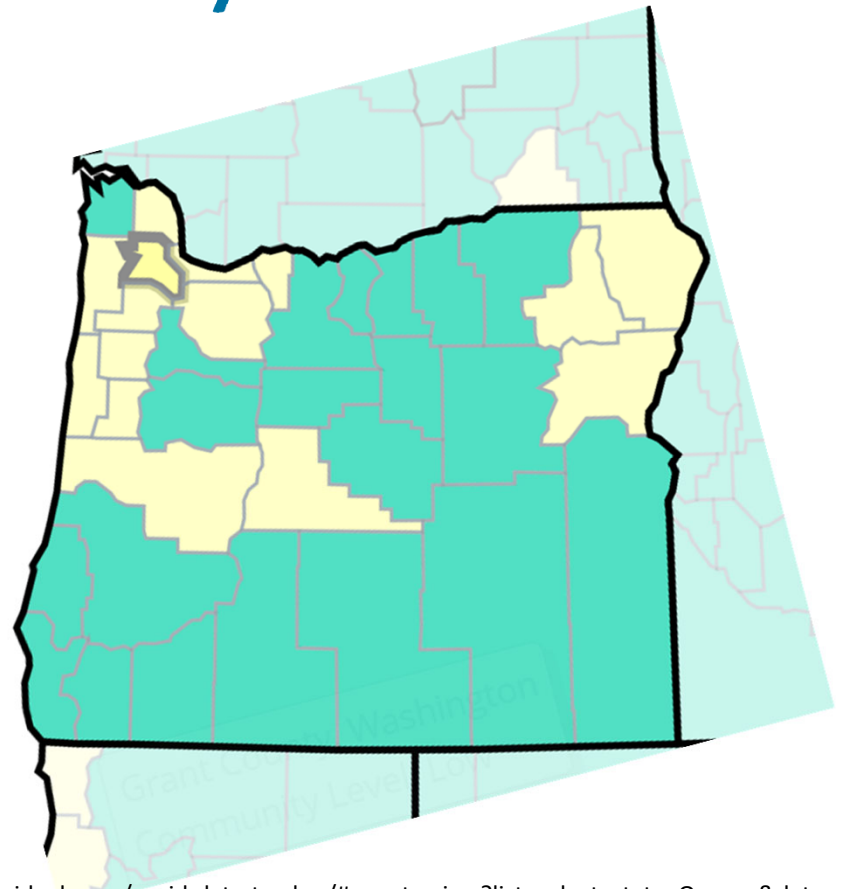
**COVID-19 Community Level** ● Medium

### Recommended actions based on current level

Stay [up to date](#) with COVID-19 vaccines. [Get tested](#) if you have symptoms. Wear a mask if you have symptoms, a positive test, or exposure to someone with COVID-19. Wear a mask on [public transportation](#). You may choose to wear a mask at any time as an additional precaution to protect yourself and others. If you are at [high risk for severe illness](#), consider wearing a mask indoors in public and taking [additional precautions](#).

### Weekly Metrics Used to Determine the COVID-19 Community Level

Case Rate per 100,000 population	314.83
New COVID-19 admissions per 100,000 population	7.4
% Staffed inpatient beds in use by patients with confirmed COVID-19	4.4%



Source: [https://covid.cdc.gov/covid-data-tracker/#county-view?list\\_select\\_state=Oregon&data-type=CommunityLevels&null=CommunityLevels&list\\_select\\_county=41067](https://covid.cdc.gov/covid-data-tracker/#county-view?list_select_state=Oregon&data-type=CommunityLevels&null=CommunityLevels&list_select_county=41067), Updated 5/25/2022

# CDC COVID-19 Booster Recommendations

Three COVID-19 vaccines are used in the United States to prevent COVID-19. Pfizer-BioNTech or Moderna (COVID-19 mRNA vaccines) are preferred. You may get Johnson & Johnson's Janssen COVID-19 vaccine [in some situations](#).

## Who Can Get a Booster

### Recommended 1 Booster

- Everyone ages 5 years and older should get 1 booster after completing their [COVID-19 vaccine primary series](#).

Learn when you should get your 1st booster below.

### Recommended 2 Boosters

- Adults ages 50 years and older
- People ages 12 years and older who are [moderately or severely immunocompromised](#)

Learn when you should get your 2nd booster below.

Source: <https://www.cdc.gov/coronavirus/2019-ncov/vaccines/booster-shot.html>, Updated 5/24/22



# Addressing Common Questions

What is the status of the pandemic?

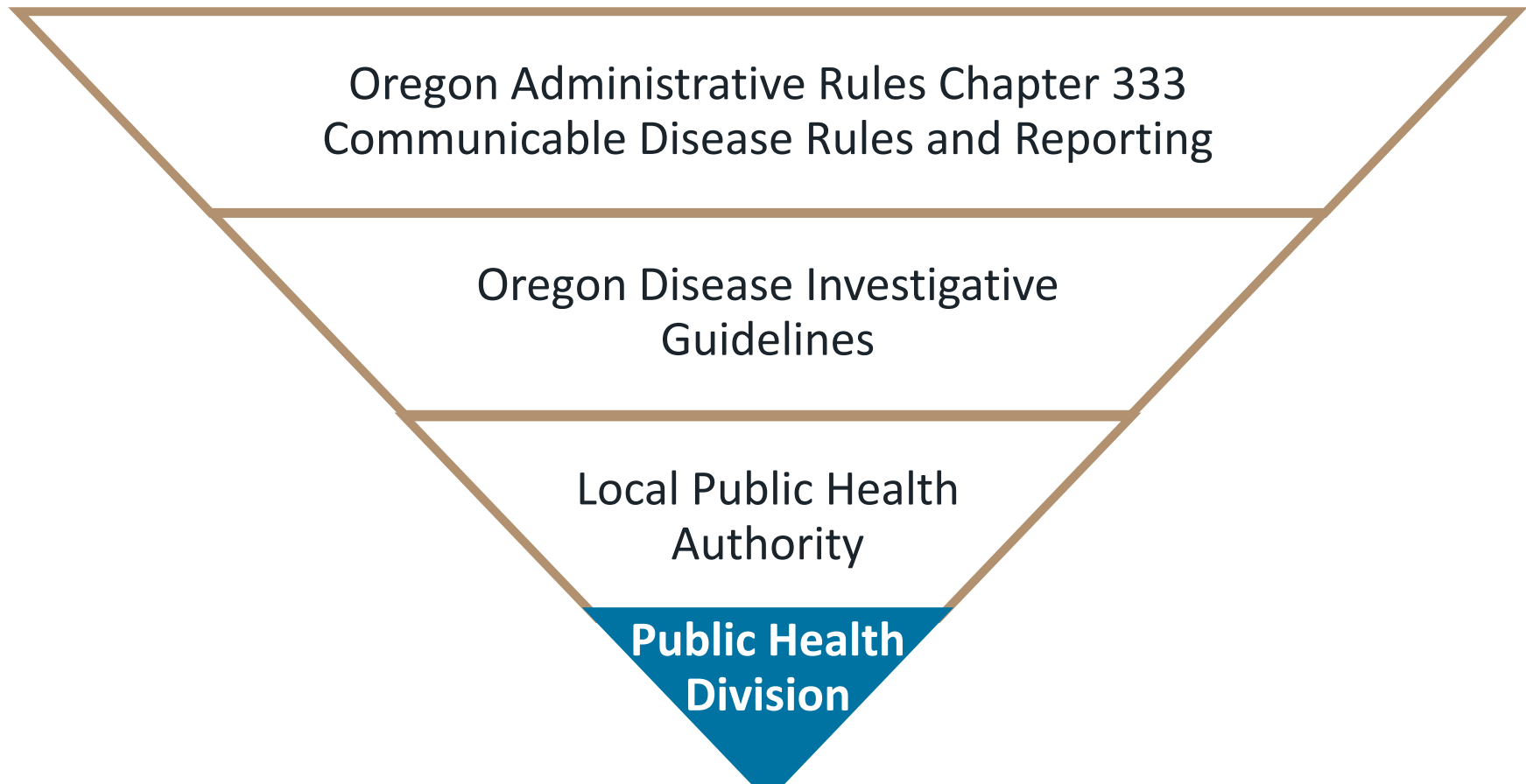
What indicators should we be watching?



What should we expect in summer/fall?

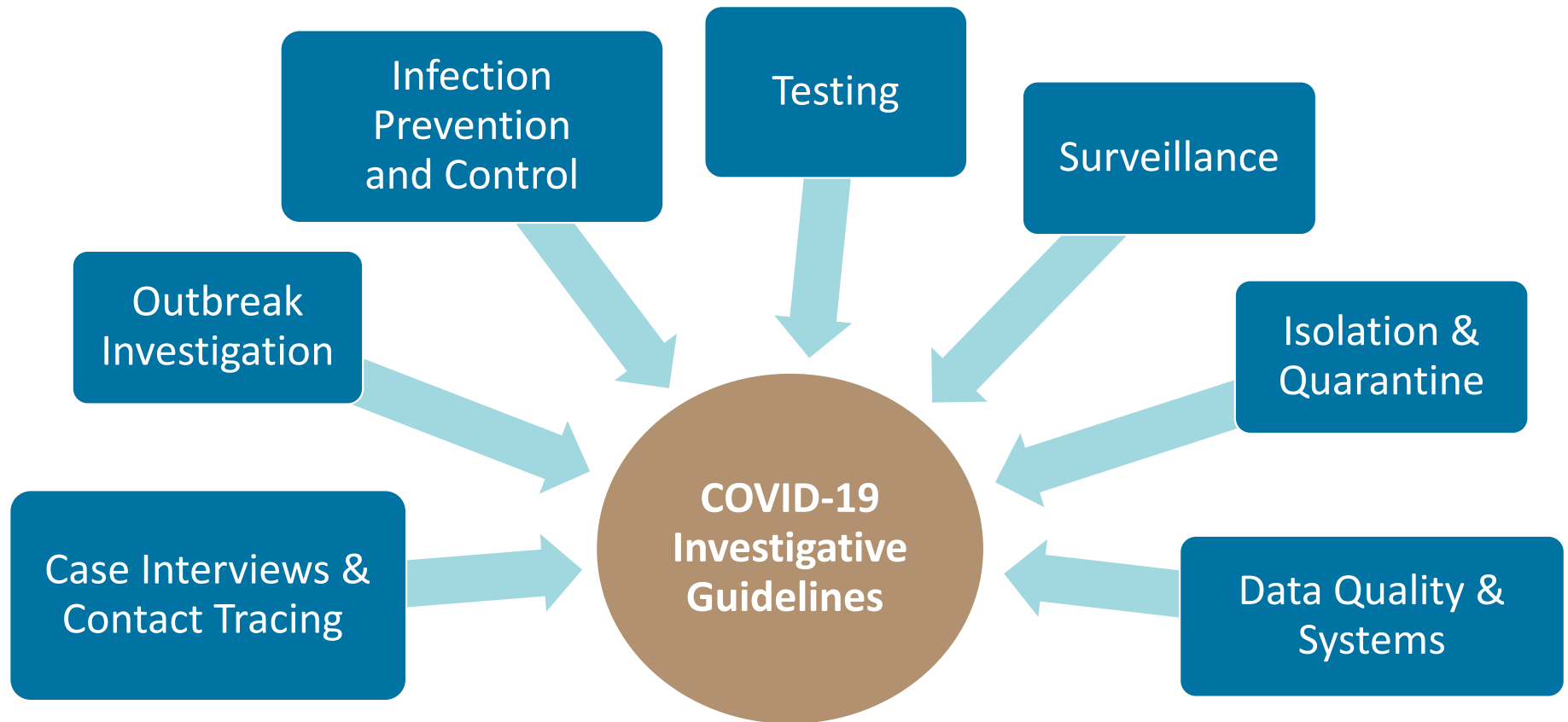


# COVID-19: Nationally Notifiable Disease



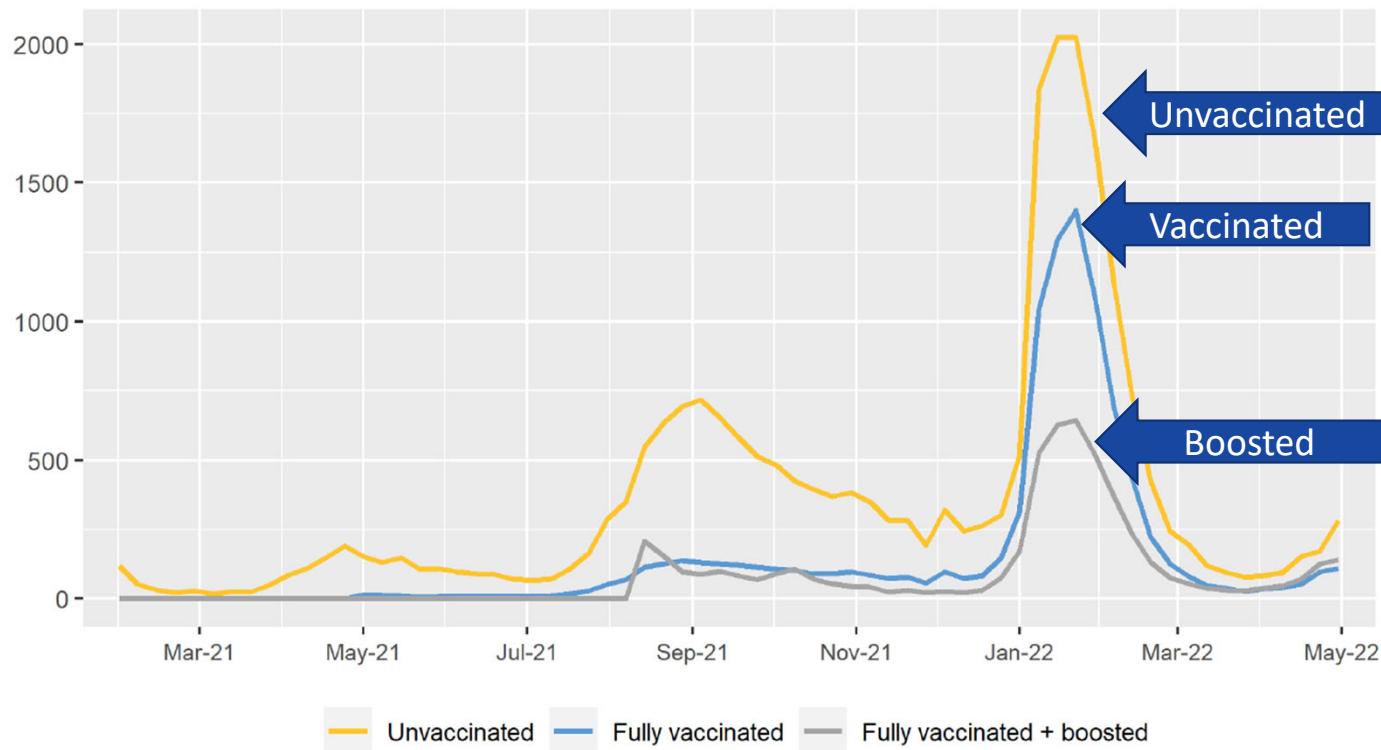


# COVID-19 Investigative Guidelines



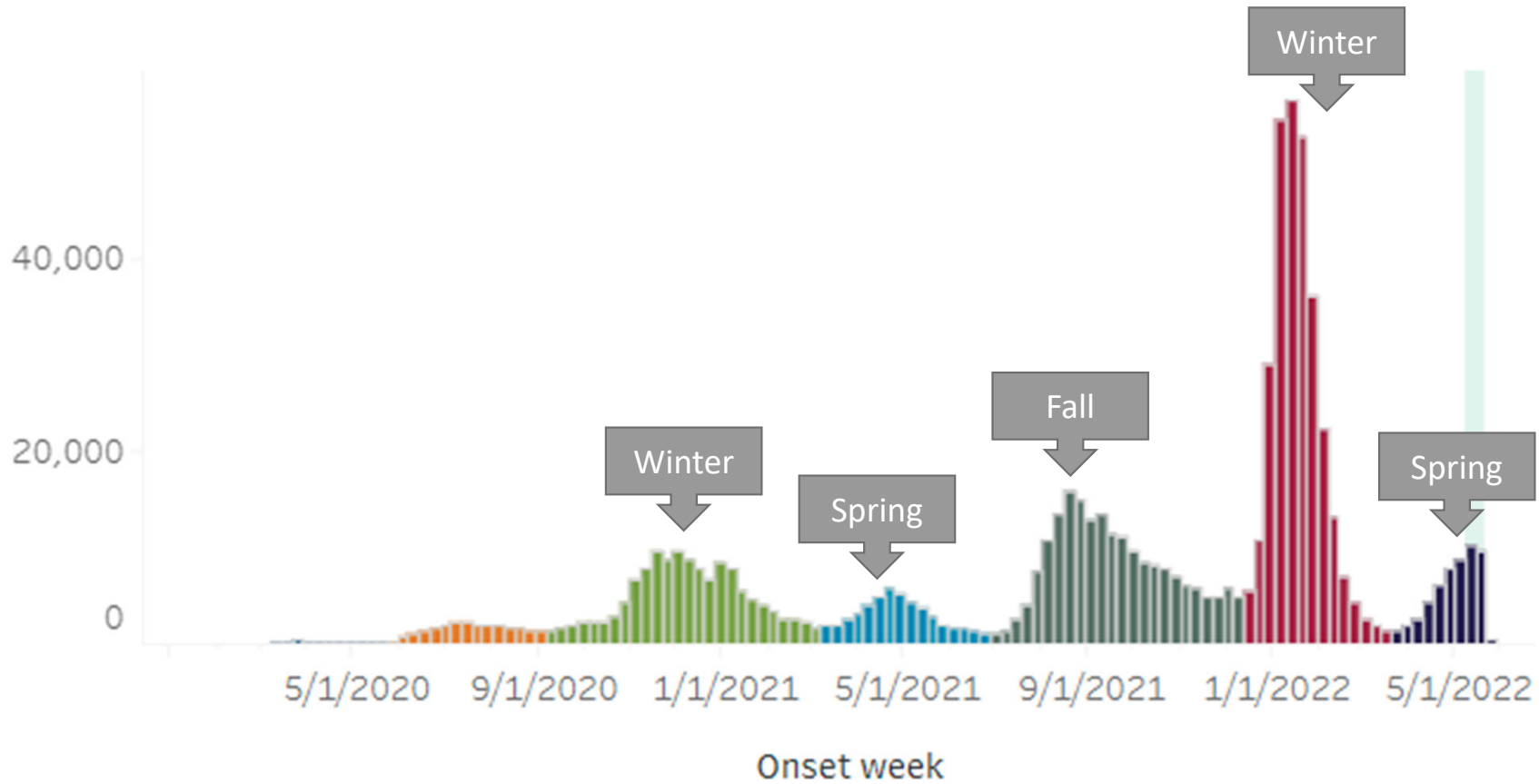
# Pandemic Status: Oregon COVID-19 Cases by Vaccination Status

Figure 1. Incident COVID-19 cases per 100,000 per week in adults, by vaccination status<sup>5</sup>



Source: <https://www.oregon.gov/oha/covid19/Documents/DataReports/Breakthrough-Case-Report.pdf> April 2022

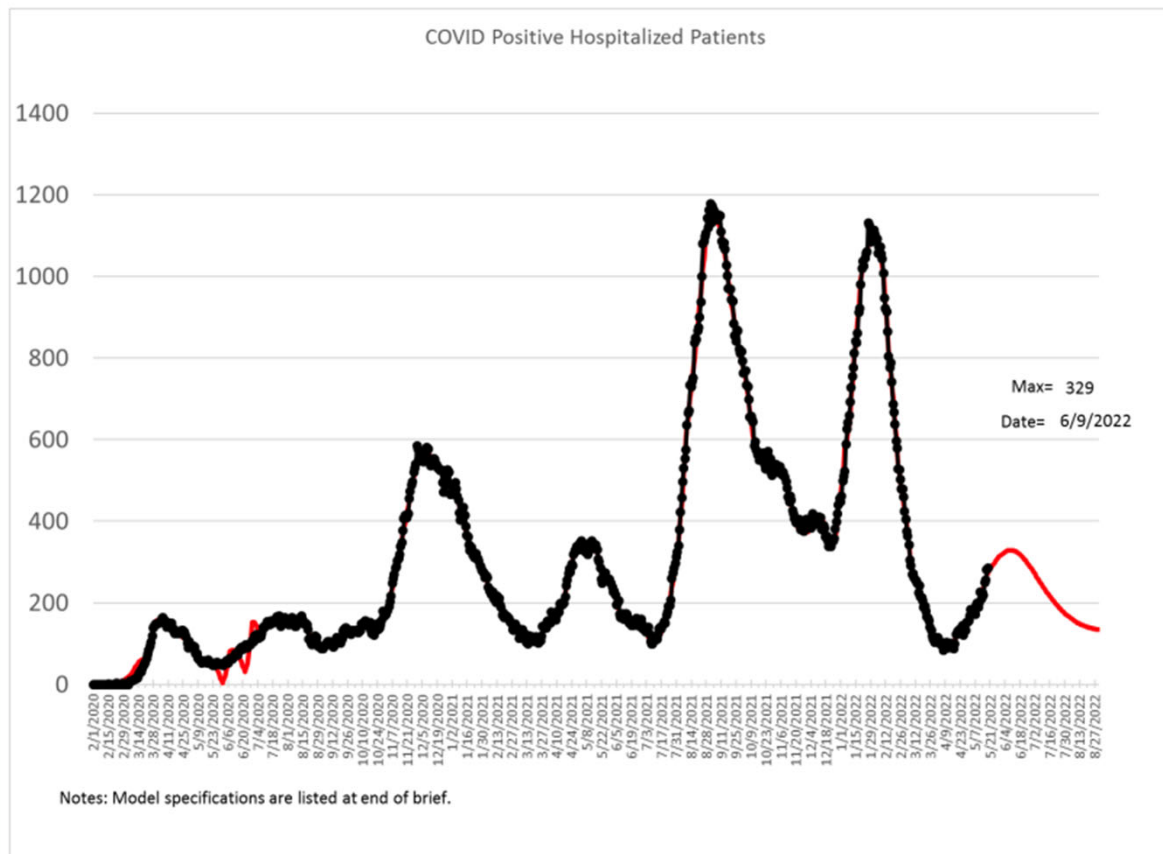
# Oregon's Seasonal Surges



Source: Oregon Health Authority's Oregon's Epidemiological Curve (5/25/22)

<https://public.tableau.com/app/profile/oregon.health.authority.covid.19/viz/OregonHealthAuthorityCOVID-19DataDashboard/COVID-19EPICases>

# Pandemic Status: OHSU Hospitalization Forecast 5/20/22

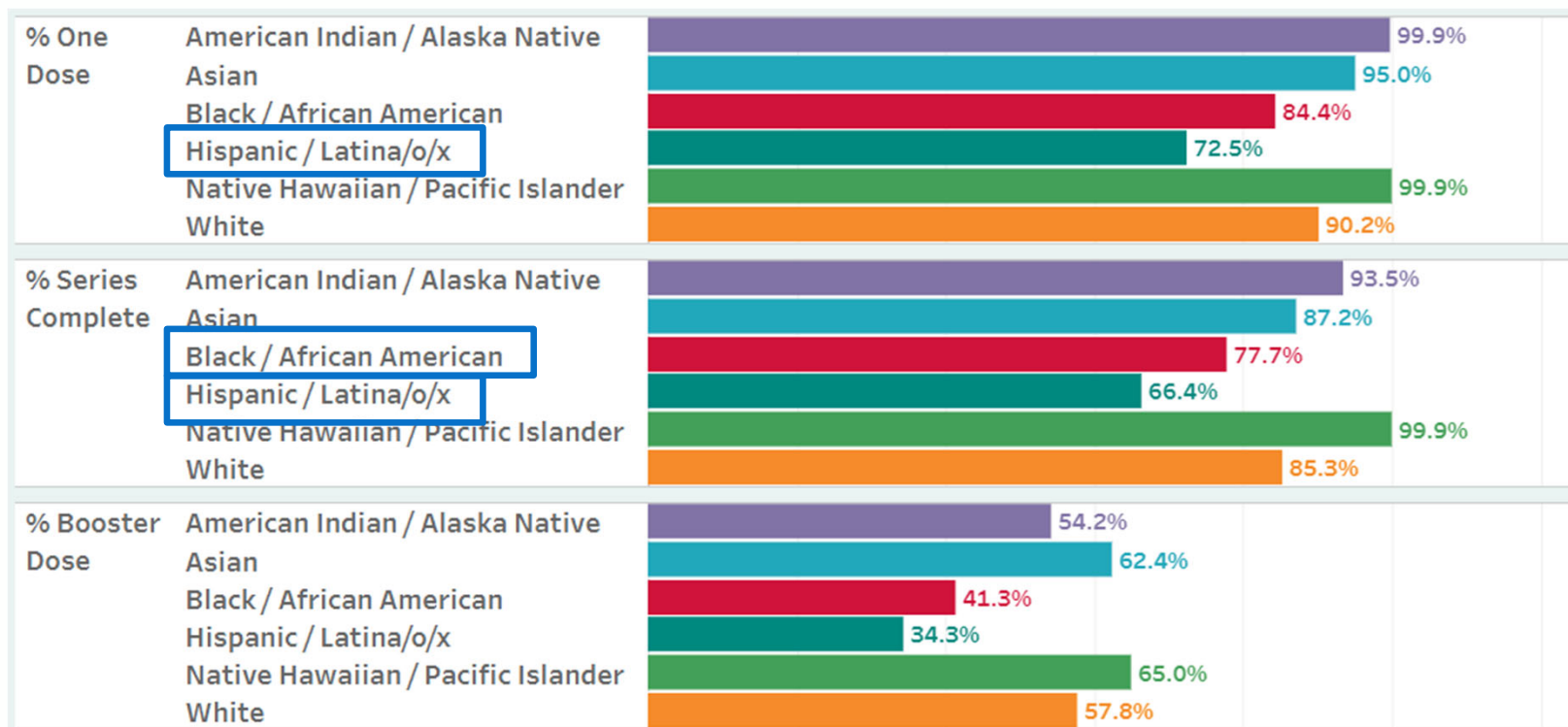


- Slight increase in hospitalized patients
- Below previous Delta and Omicron hospitalizations
- Peak expected June 9th

Source: OHSU Office of Advanced Analytics  
<https://www.ohsu.edu/sites/default/files/2022-05/OHSU-COVID-Forecast-May20-2022.pdf>

# COVID-19 Vaccinations: Communities are still not equally protected

## VACCINATION IN WASHINGTON COUNTY – Update 5/25/2022



80%  
Goal

Source: Oregon Health Authority COVID-19 Vaccination Metrics (5/25/22)

<https://public.tableau.com/app/profile/oregon.health.authority.covid.19/viz/OregonCOVID-19VaccineEffortMetrics/RaceandEthnicityData>

## What should we expect this summer/fall?



**Multiple** viruses (e.g., influenza, norovirus) spreading **in addition to** COVID-19. Continued decreases in reported COVID-19 resulting from **increased** home tests. Reliance on **hospital admissions**.



Increased **need to center equity** in response and recovery to prevent and address inequities.



New COVID-19 **variants**, continued **masking** recommendations, vaccination and booster **protection against** severe disease and hospitalization.



Continued **workforce and supply chain** problems



**Boosters for kids and vaccinations for younger kids**

# Planning Considerations



## **We are operating in seasonal surges**

Impacts will vary – we are staying on top of modeling and monitoring

## **We have more work to do to address disparities**

The disease has disproportionate burdens on marginalized populations

## **We continue to monitor new variants**

Our systems must be responsive and flexible, and proactively address inequities



**THANK YOU**



Board of County Commissioners  
Community-based organizations  
Service partners  
Partner jurisdictions  
ARPA programs staff  
Public Health staff

For your continued work in pandemic response and recovery