



Public Health
Prevent. Promote. Protect.



MARIJUANA LEGALIZATION

The landscape of marijuana and
public health policy in Oregon
and Washington County

Gwyn Ashcom, MPH, MCHES
Tobacco Prevention Coordinator
Washington County Public Health



**WHAT'S
LEGAL?**

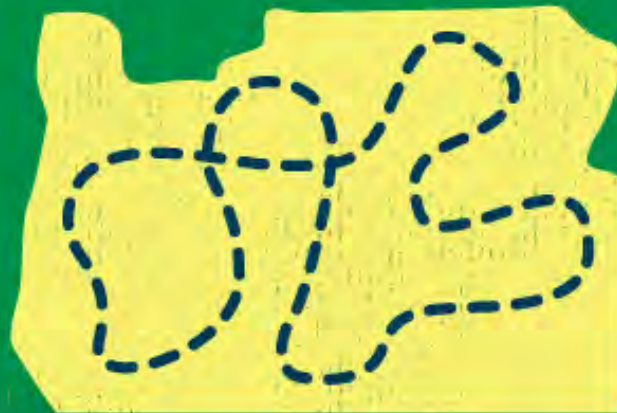


21+

You can possess, use and buy recreational marijuana if you are 21 and older. If you are younger, it's illegal.



Adults 21 and older can use recreational marijuana at home or on private property. You can't use recreational marijuana in public places.



**You cannot take marijuana in or
out of the state, even to other
states where it is legal.**



There are limits to how much recreational marijuana you may possess, both in public or in private.



one gram



eighth ounce



quarter ounce



half ounce



one gram

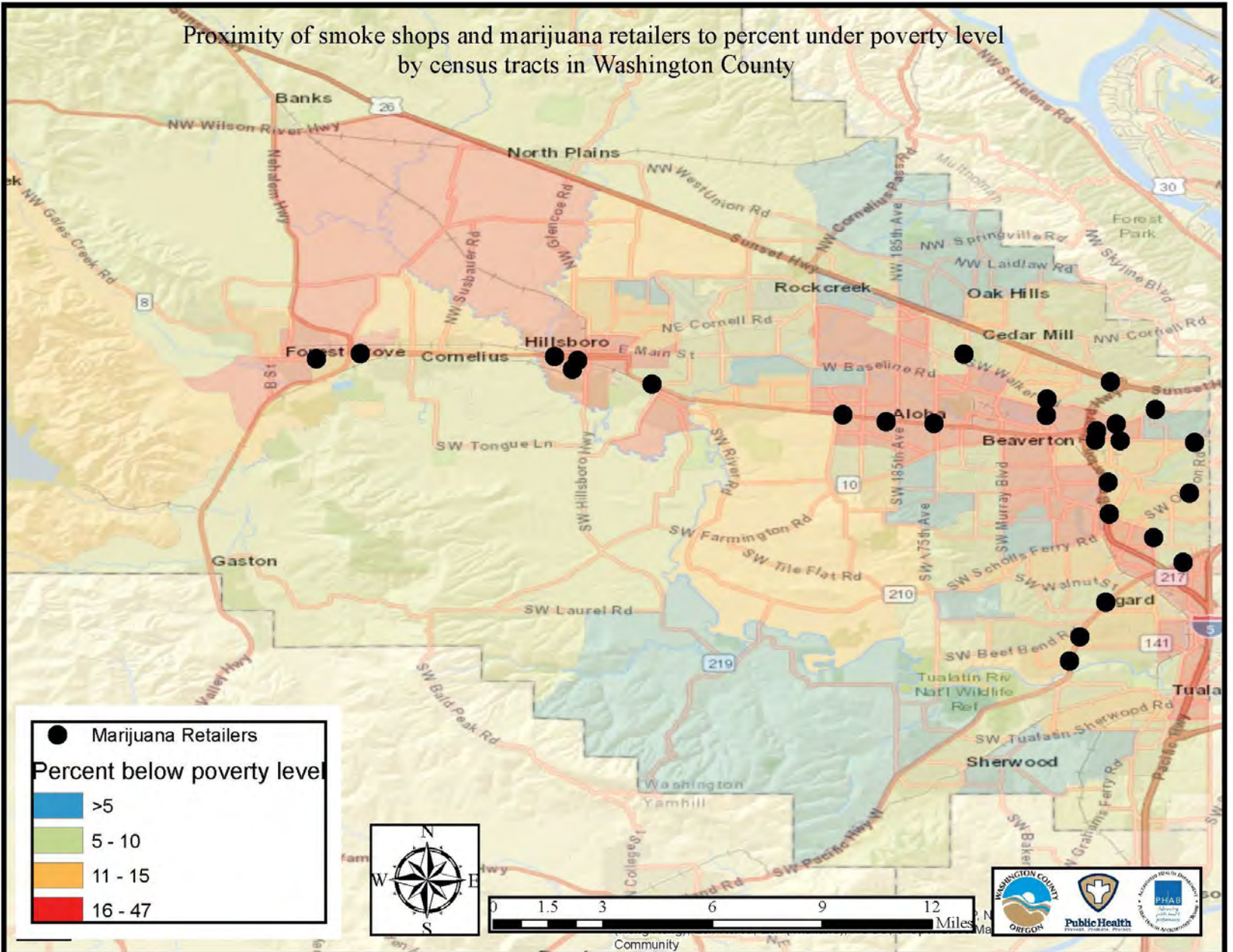
half gram



one ounce



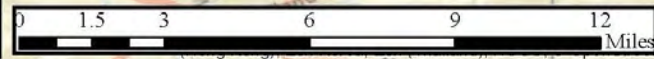
Proximity of smoke shops and marijuana retailers to percent under poverty level by census tracts in Washington County



● Marijuana Retailers

Percent below poverty level

- >5
- 5 - 10
- 11 - 15
- 16 - 47



7 Reasons to Care – the marijuana and tobacco connection

1. Co-Use
2. Overlapping methods of use and products
3. Compounding Health Effects
4. Potential impacts on quitting
5. Potential impacts on smokefree air laws
6. Potential impacts on social norms and youth use
7. Potential industry overlap

Washington State & King County

1. Broaden the evidence base
2. Prevent youth use and ensure access to treatment
3. Inform pregnant and breastfeeding women about potential risks
4. Protect people from injury, poisoning and death
5. Ensure environmental health and safety
6. Promote racial equity and healthy communities

Broaden the Evidence Base



Prevent Youth Use



Inform Pregnant and Breastfeeding Women About Potential Risks



Protect People From Injury, Poisoning and Death



Ensure Environmental Health and Safety



Promote Racial Equity and Healthy Communities



Biggest Take Aways

- It's not a matter of if, but when for all the states to legalize marijuana.
- What have we learned from dealing with the alcohol and tobacco industries and what can be applied to marijuana.
- We can be proactive or reactive.
- There are still a lot of unanswered questions.

Thank you!

Gwyn Ashcom, MPH, MCHES
Tobacco Prevention Coordinator
Washington County Public Health

Gwyn_Ashcom@co.washington.or.us

503-846-4544