

LONG-TERM CARE FACILITIES INFLUENZA PREVENTION PROJECT

September 10th 2019

Sue Liong and
Nike
Neuvenheim

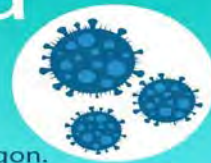


WASHINGTON COUNTY
OREGON

Department of Health and Human Services



Influenza impact



on the elderly and long-term care facilities in Washington County, Oregon.

75,000+

Washington County residents
65 and older



1 in 3

Washington County residents
age 65 and older has a
disability and may live in
a long-term care facility

~40%



of Oregon long-term care facility outbreaks
caused by influenza



Healthy People 2020 goal

90%

immunization rate
for influenza in
patients 65 and older

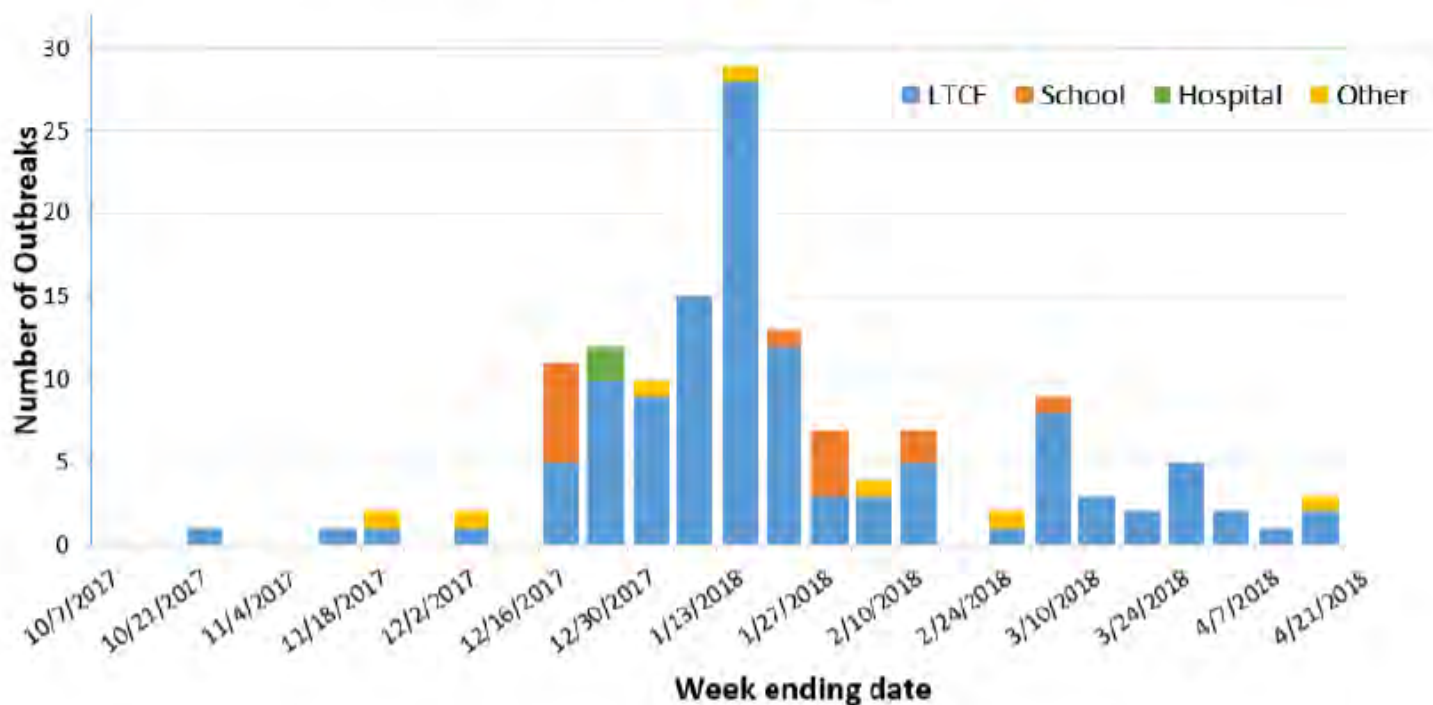


WASHINGTON COUNTY
OREGON

Department of Health and Human Services

Outbreak Update: There were no influenza-like illness outbreaks reported to the Oregon Health Authority during week 16 of the 2017–2018 flu season. There have been a total of 141 influenza-like illness outbreaks reported this flu season, with 84% occurring in long-term care facilities and 10% occurring in schools.

Number of Influenza or ILI Outbreaks in Oregon, by Setting, 2017–2018



Disease Control and Prevention Program awarded grant to improve vaccine rates in Long Term Care Facilities (LTCF) in Washington County.



MARYVILLE AND ELITE CARE AT FANNO CREEK FACILITIES



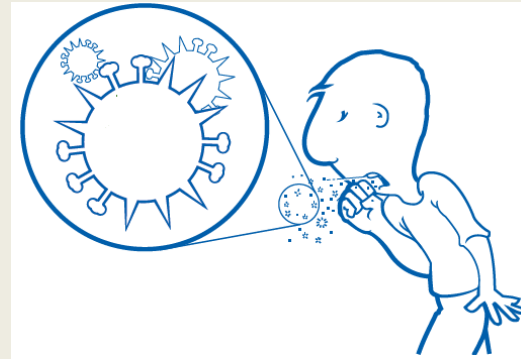
WASHINGTON COUNTY
OREGON

Department of Health and Human Services



Washington County Public Health: Disease Control and Prevention Program

Final Report: Enhancing Flu Vaccine in Long Term Care Facilities



WASHINGTON COUNTY
OREGON

Department of Health and Human Services

LTCF INFLUENZA PREVENTION TOOLKIT

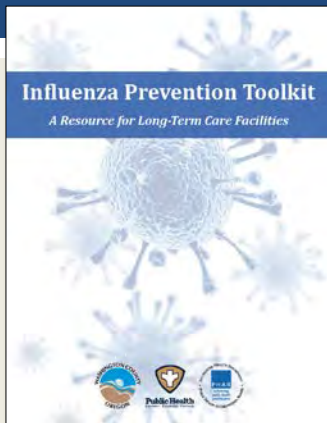


TABLE OF CONTENTS

Introduction	1
Educational Materials, Tools and Resources	2
Influenza Vaccination Campaign Guide	6
Proposed Flu Campaign Schedule	6
How to Order Vaccine	7
Setting Up the Immunization Event	7
Reporting: When to Call Washington County Public Health	11
Surveillance	12
Acknowledgments and Contact Information	13

INFLUENZA VACCINATION CAMPAIGN GUIDE

PROPOSED FLU CAMPAIGN SCHEDULE

Adapted from Veterans Health Administration, U.S. Department of Veterans Affairs.

Available at: <https://www.publichealth.va.gov/docs/flu/flu-campaign-calendar.pdf>

May:	Plan your campaign by answering these questions: <ul style="list-style-type: none"> • What is the available budget? • Who are your campaign team members? • Who is your target audience? • What do you need for the campaign? (promotional materials, vaccine, supplies, etc.) • When should things happen? • Where should events be held? • Who is responsible for what? • What are the strengths and weakness of previous campaigns?
June:	Start preparing for your campaign. Start surveillance on influenza activity for the whole season.
July:	Start promoting your campaign. Begin education on vaccine benefits and availability.
August:	Finalize plans for campaign. Update immunization policies and protocol. Train HCP for vaccine administration and record keeping.
September to April:	Hold a kick-off event and promote vaccination. Monitor efficiency and participation. Maintain records on immunizations. Analyze vaccination rate for your HCP and residents. Evaluate campaign's strengths, weaknesses, challenges and success.



EDUCATIONAL MATERIALS, TOOLS AND RESOURCES

Here are some educational materials, tools and resources for LTCF providers, health care personnel, residents and visitors to provide information, answer questions, and address myths and misinformation about the flu.

INFLUENZA: INFECTION PREVENTION AND CONTROL

Description: Basic slides discussing influenza infection prevention and control for HCP and resident training and education

Available at: <https://www.co.washington.or.us/HSIS/CommunicableDiseases/lrcf.cfm>

Source: Washington County Disease Control and Prevention



INFLUENZA FACT SHEET

Description: One-page printable handout about influenza

Available at: <https://www.co.washington.or.us/HSIS/>



ISOLATION CART

This is a mobile cart that contains personal protective equipment (PPE) with the flexibility to move outside the room of a resident who is ill. PPE should be readily available to prevent the spread of the flu. It is important to wear PPE when interacting with sick residents and to disinfect all surfaces.

- The isolation cart contains:
- Examination gloves
 - Facemasks
 - Facemasks with eye shield
 - Examination gowns
 - Disinfectant wipes
 - Hand sanitizer
 - Isolation Precaution Cards

<https://washington-state-hospital-association.myshopify.com/collections/isolation-precautions>

Source: Washington State Hospital Association



Found at:

<https://www.co.washington.or.us/CommunicableDiseases/lrcf.cfm>
WASHINGTON COUNTY
OREGON
 Department of Health and Human Services

LTCF INFLUENZA PREVENTION TOOLKIT

Available at: <https://www.co.washington.or.us/HHS/CommunicableDiseases/lpcf.cfm>

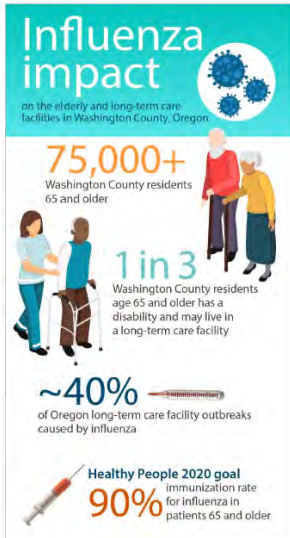
INTRODUCTION

This toolkit was developed with the goal to provide a standardized influenza prevention campaign and to serve as a guide for long-term care facilities (LTCF) in Washington County.

As the rate of Washington County's aging population continues to grow, and the need for the provision of an all-inclusive set of services for individuals with chronic illnesses or disabling conditions increases, the demands placed upon LTCF providers and the utilization of their services will continue to rise.

Washington County Public Health's Disease Control and Prevention (DCAP) program, aims to strengthen collaborative partnerships with LTCF providers to prevent the emergence and spread of infectious disease among health care personnel (HCP) and residents by identifying barriers and implementing evidence-based strategies, such as influenza vaccination.

Important note: This toolkit includes some extremely long hyperlinks. The document is meant to be used electronically, rather than printed out.



1 | Page

EDUCATIONAL MATERIALS, TOOLS AND RESOURCES

Here are some educational materials, tools and resources for LTCF providers, health care personnel, residents and visitors to provide information, answer questions, and address myths and misinformation about the flu.

INFLUENZA: INFECTION PREVENTION AND CONTROL

Description: Basic slides discussing influenza infection prevention and control for HCP and resident training and education

Available at: <https://www.co.washington.or.us/HHS/CommunicableDiseases/lpcf.cfm>

Source: Washington County Disease Control and Prevention



INFLUENZA FACT SHEET

Description: One-page printable handout about influenza

Available at: <https://www.co.washington.or.us/HHS/CommunicableDiseases/lpcf.cfm>

Source: Washington County Disease Control and Prevention



FLU AND YOU

Description: Basic overview of seasonal flu.

Available at:
English: https://www.cdc.gov/flu/resource-center/images/multi-language-pdfs/flu_and_you_english_508.pdf
Spanish: https://www.cdc.gov/flu/resource-center/images/multi-language-pdfs/flu_and_you_spanish.pdf
Other languages: <https://www.cdc.gov/flu/resource-center/flu-resources/multi-language-factsheets.html>

Source: CDC



2 | Page

INFLUENZA VACCINATION CAMPAIGN GUIDE

PROPOSED FLU CAMPAIGN SCHEDULE

Adapted from Veterans Health Administration, U.S. Department of Veterans Affairs.

Available at: <https://www.publichealth.va.gov/docs/flu/flu-campaign-calendar.pdf>

- May:** Plan your campaign by answering these questions:
- What is the available budget?
 - Who are your campaign team members?
 - Who is your target audience?
 - What do you need for the campaign? (promotional materials, vaccine, supplies, etc.)
 - When should things happen?
 - Where should events be held?
 - Who is responsible for what?
 - What are the strengths and weakness of previous campaigns?
- June:** Start preparing for your campaign.
Start surveillance on influenza activity for the whole season.
- July:** Start promoting your campaign.
Begin education on vaccine benefits and availability.
- August:** Finalize plans for campaign.
Update immunization policies and protocol.
Train HCP for vaccine administration and record keeping.
- September to April:** Hold a kick-off event and promote vaccination.
Monitor efficiency and participation.
Maintain records on immunizations.
Analyze vaccination rate for your HCP and residents.
Evaluate campaign's strengths, weaknesses, challenges and success.

Free campaign promotion materials are available from the CDC at: <https://www.cdc.gov/flu/resource-center/freeresources/index.htm>.



WASHINGTON COUNTY
OREGON

Department of Health and Human Services

NEXT STEPS:

FEEDBACK, DISTRIBUTION, & PARTNERSHIP

GOAL:

PREVENT AND CONTROL INFLUENZA IN
FRAIL ELDERLY



WASHINGTON COUNTY
OREGON

Department of Health and Human Services



Hi Sue –

We are interested in talking with you about funding you to get this product ready to share across Oregon's LTCF and local public health communities.

Mimi Luther

Provider Services Team Manager

[Oregon Immunization Program](#)

Lydia.m.luther@state.or.us

971-673-0296



Vaccines and Immunization

Oregon Immunization Program

ACKNOWLEDGMENTS

Washington County Public Health would like to thank the following individuals and organizations for their input and participation in developing this toolkit.

- Sue Liong, BSN, RN
- Nike Neuenheim, MPA
- Nathan Roberts: Intern from Pacific University
- Carrie Shuler, DVM, MPH
- Elite Care at Fanno Creek
- Maryville Nursing Home
- HealthInsight / Comagine
- Oregon Health Authority,
- Oregon Immunization Program

