

Washington County Community Health Improvement Plan Forum



Agenda

Welcome and Orientation

History and Context of the CHIP

How Data and Community Inform
the CHIP

Plan for Next CHIP

Acronyms

- Take a photo with your phone or take a screenshot on your computer:
 - MacOS: Command + Shift + 4, then click and drag to select area
 - Windows: Windows + Shift + s, then click and drag to select area
- Tome una foto con su teléfono o tome una captura de pantalla en su computadora:
 - MacOS: Command + Shift + 4, luego pulse y arrastre para seleccionar el área
 - Windows: Windows + Shift + s, luego pulse y arrastre para seleccionar el área

Acronyms / Siglas	English	Español
CHA/CHNA	Community Health (Needs) Assessment	Evaluación (Necesidades) de Salud Comunitaria
CHIP	Community Health Improvement Plan	Plan de Mejoramiento de la Salud Comunitaria
HCWC	Healthy Columbia Willamette Collaborative	Colaboración Saludable de Columbia Willamette
HEAP	Health Equity Action Plan	Plan de Acción de Equidad en Salud
HHS	Health and Human Services	Salud y Servicios Humanos
PHM	Public Health Modernization	Modernización de la Salud Pública
SHIP	State Health Improvement Plan	Plan Estatal de Mejora de la Salud
WCPH	Washington County Public Health	Salud Pública del Condado de Washington

Washington County CHIP Forum Planning Team



Laura Daily



Kelly Linss



Chandra Greenberg



Genevieve Ellis



Alicia Aquino



Big Picture: History and Context of the CHIP

What is a CHIP?

- Strategic plan for the community's health
- Identifies priority issues on health and goals/strategies to address those issues
- Collaborative planning process
- Based on a community health needs assessment (CHNA)
- Required for Public Health Accreditation

Identified health priorities based on Community Health Assessment

Timelines & roles

Measurable objectives

Policy recommendations aimed at alleviating health inequities

Strategies & Activities

Identification of community asset & resources

Tracking processes

Evidence of implementation & documenting results

Live Well Washington County

A Strategic Plan for the Community's Health

- Completed in 2014, 2017, and 2020
- 2020 Foundational Goals
 - Improve Health Equity
 - Address disparities
 - Use trauma-informed approach
- 2020 Priorities Areas:
 - Improve Access to Care
 - Improve Behavioral Health Outcomes
 - Build Systems to Improve Wellbeing



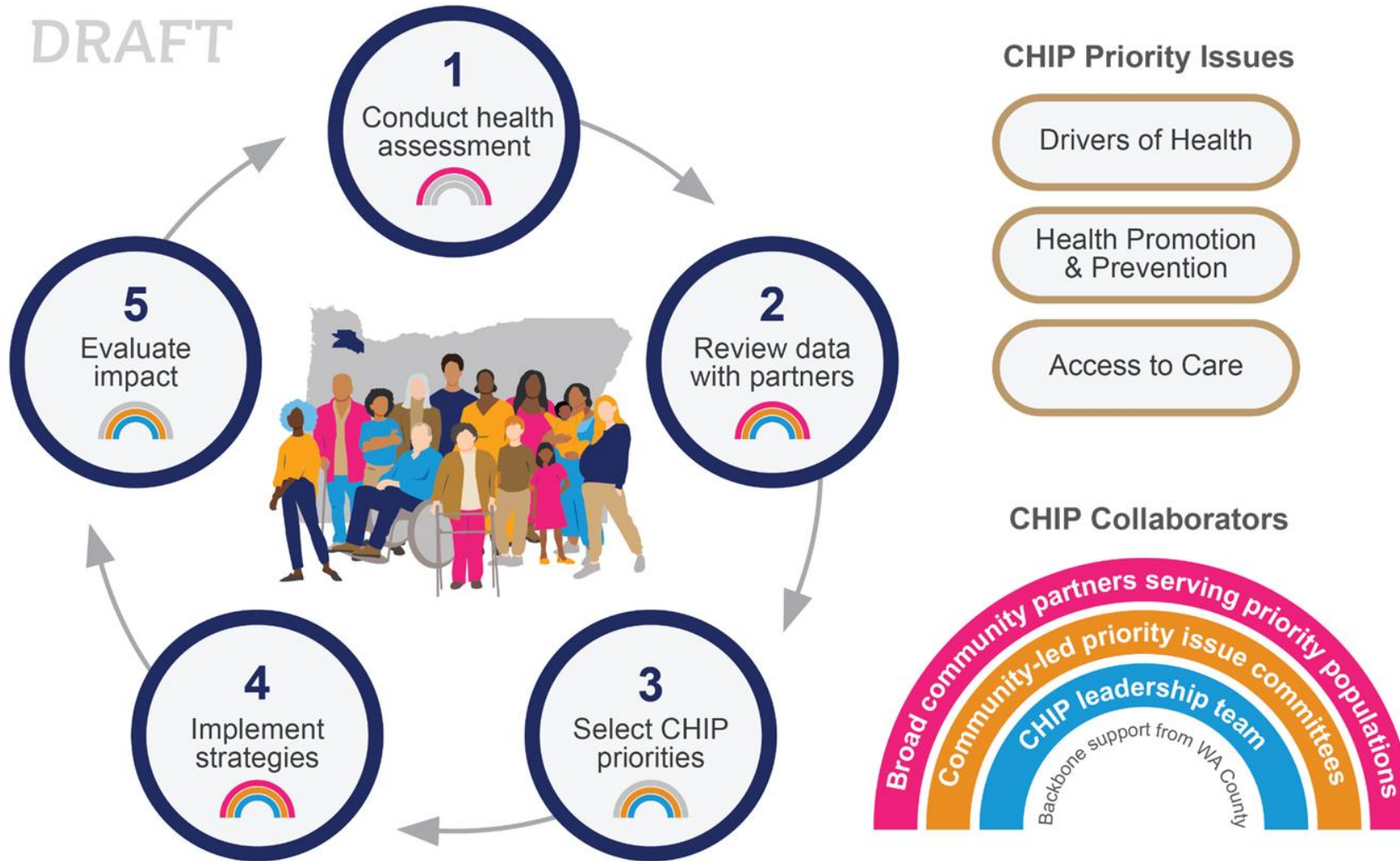


Zooming In: How Data and Community Inform the CHIP

Washington County: Community Health Improvement Plan

The Community Health Improvement Plan (CHIP) is a strategic plan for the community's health.

DRAFT



HCWC Regional CHNA

- HCWC conducts a regional community health needs assessment (CHNA)
- Once the CHNA is released, we add in other local data from partners or other sources
- **How you can be involved:** Let us know if you have community-specific data that we should know about for the CHIP



Reviewing Data Together

- In the past, we presented Washington County data to committees to hear feedback
- Will be working with partners over the next year to determine best process for bringing data to them for review
- **How you can be involved:** Look out for opportunities to provide feedback on processes this spring!



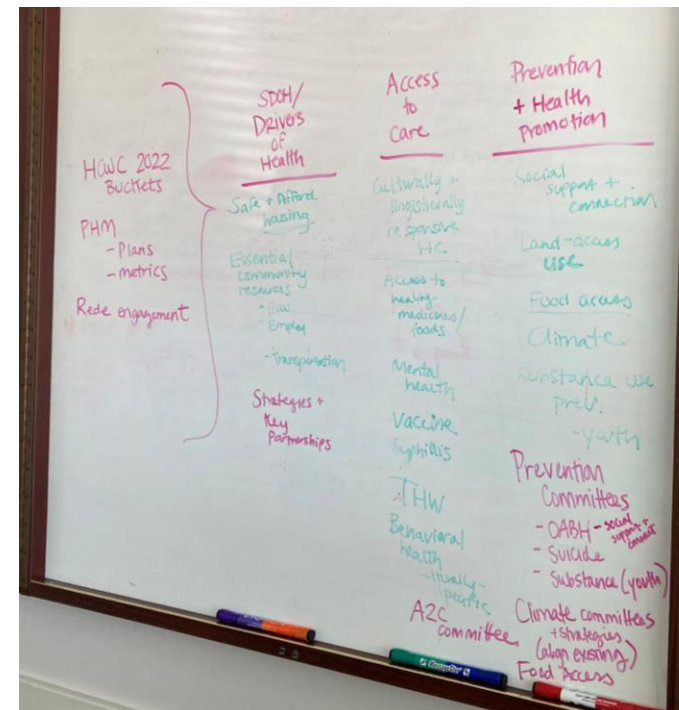
Priorities Selection

CHIP Priority Issues

- Drivers of Health
- Health Promotion & Prevention
- Access to Care

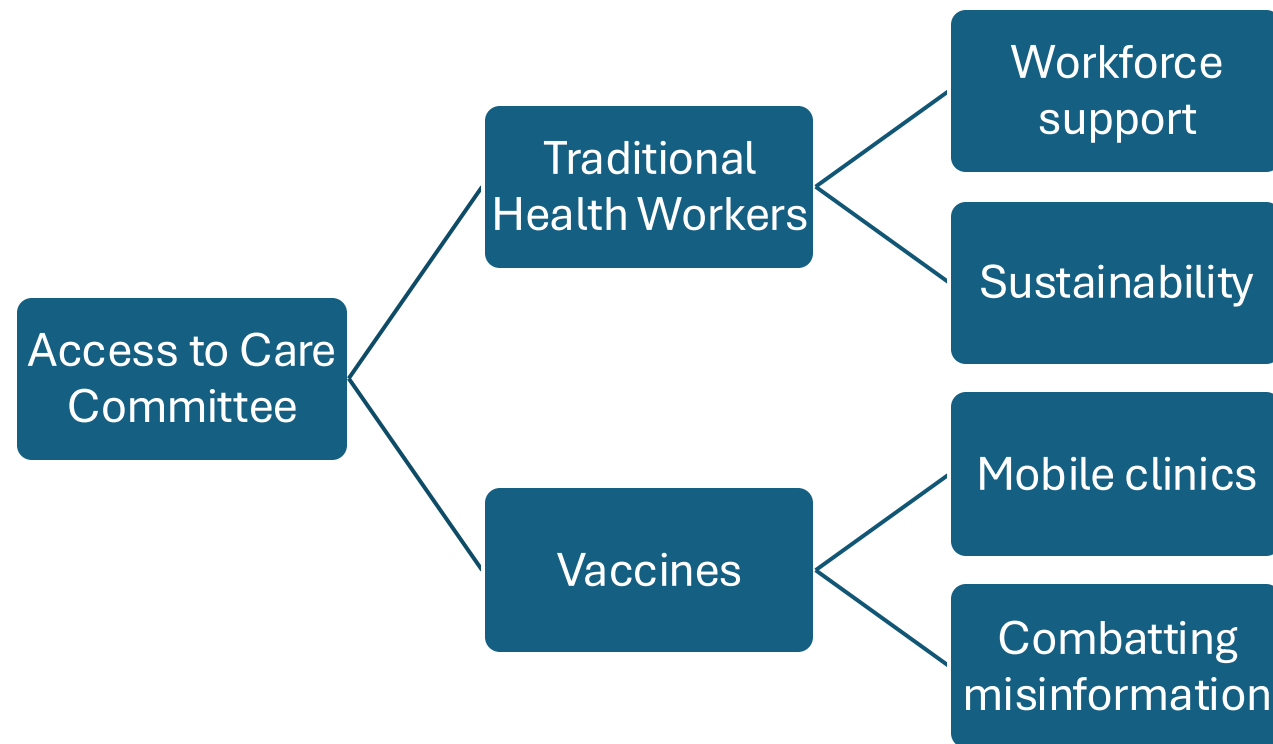


- Role of CHIP Committees and Leadership Team
- Questions and discussion about data – what does this mean for your community?
- Hoping to refine process through the next year.
- **How you can be involved:** Stay tuned and sign up for a committee next fall!



Select and Implement Strategies

- Committee work
- CHIP grants
- Prioritizing CHIP funding
- **How you can be involved:** Attend committee meetings to review the data and decide which strategies to focus on.



Evaluation

- Thinking about evaluation from the beginning
- Draw from discussions with partners as well as existing frameworks/tools to determine how we want to measure impact
- We will develop/refine/propose framework over the next year
- **How you can be involved:** Look out for opportunities this spring to provide input on evaluation process!

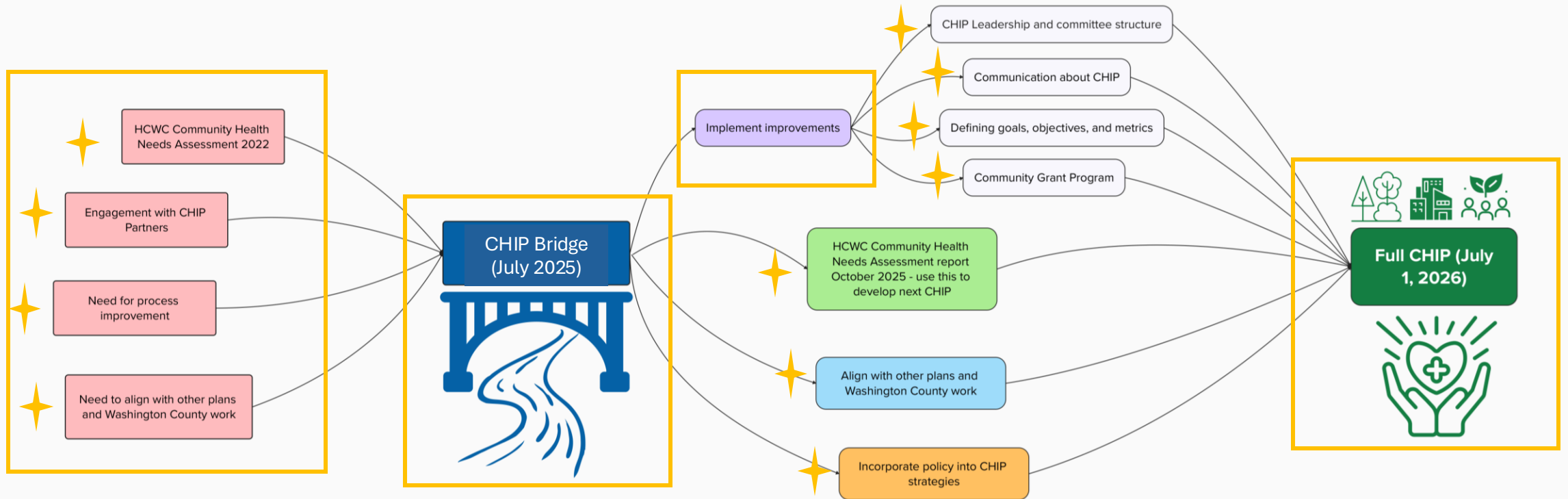




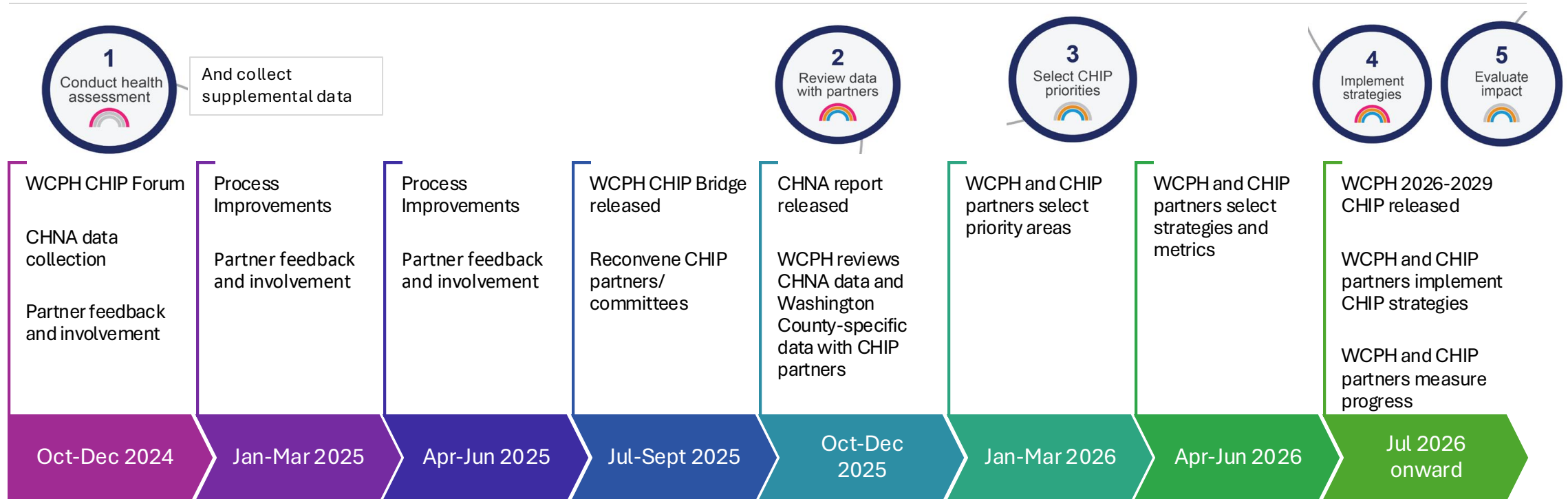
Plan for the Next CHIP

Bridge CHIP to Full CHIP

Washington County Public Health Community Health Improvement Plan Timeline, November 2024 to July 2026



Tentative CHA/CHIP Timeline



Get involved!



To stay connected to the CHIP, take the partner survey and look out for opportunities to provide input this spring!

https://www.washingtoncounty-or.com/jfe/form/SV_ac1pMF83suazckm

Learn more at:

<https://www.washingtoncountyor.gov/hhs/community-health-improvement-plan>



Thank you!

For questions or feedback, email
CHIP@washingtoncountyor.gov