



American Rescue Plan Act (ARPA) Framework and Immediate Pandemic Response Investments

Washington County Public Health Advisory Council Meeting

Dorian Russell, ARPA Senior Program Coordinator
Dorian_Russell@co.washington.or.us

| August 10, 2021

Washington County Administrative Office

www.co.washington.or.us

ARPA Landscape Overview

Individuals & Families

- Stimulus checks
- Extended unemployment
- Child tax credit expansion
- Emergency rental and homeowner assistance
- Utility assistance

Businesses

- Paycheck protection program expansion
- Shuttered venue relief
- Restaurant relief
- Paid leave credits
- Employee retention credit

Education

- Elementary and secondary school emergency funding
- Head Start program expansion
- Homeless youth services

Health

- Extensive additions to various block grants including substance abuse, mental health, behavioral health, and childcare and development
- SNAP expansion
- Vaccine distribution

State & Local Governments

- Cities
- **Counties**
- States, territories, & Tribal governments
- Capital projects

ARPA Landscape Overview

Individuals & Families

Stimulus checks

- \$1400 to individuals, with adult dependents and full-time students eligible

Extended unemployment

- Unemployment payments up to \$10,200 are not tax exempt this year
- \$300 enhancement per week extended through September 2021

Child tax credit expansion

- Fully refundable child tax credit for 2021
- \$3,600 per child under age 6; \$3,000 for children ages 6-17

Emergency rental and homeowner assistance

- Allocated to the State for distribution
- Emergency Rental Assistance Program funding for high-need grantees
- Renter and homeowner relief assistance for eligible households

Utility assistance

- Allocated to State for distribution
- Utility relief assistance for eligible households

ARPA Landscape Overview

Businesses

Paycheck protection program expansion

- More inclusive eligibility and additional funding

Shuttered venue relief

- Additional funding for businesses in performing arts and non-sports entertainment

Restaurant relief

- New SBA Restaurant Revitalization Fund
- Broad eligibility across food carts, bars, restaurants, and other businesses with less than 20 locations and which are not publicly traded
- Prioritizes small businesses owned by marginalized individuals

Paid Leave Credits

- Extended through September
- Increase from \$10k to \$12k per employee
- Eligible leave reasons now include vaccination

Employee Retention Credit

- Extended through remainder of 2021
- Expanded eligibility

ARPA Landscape Overview

Education

Elementary and secondary school emergency funding

- 20% or more of funding toward addressing learning loss
- Remainder for ventilation, space modification, hiring, PPE, and more
- Assistance available to private schools if they have a significant percentage of low-income students
- Maintenance of equity requirement – states cannot cut funds for low income areas below 2019 levels, does not allow state per-pupil budget cuts at a rate steeper than overall cut

Head Start

- Funding for the early childhood program

Homeless youth services

- Funding for identifying, enrolling, and ensuring participation of homeless students

Emergency Connectivity Fund

- Emergency Connectivity Fund for schools, libraries for internet connectivity and devices for remote learning
- Funding for internet connectivity and devices for remote learning at schools and libraries

ARPA Landscape Overview

Health

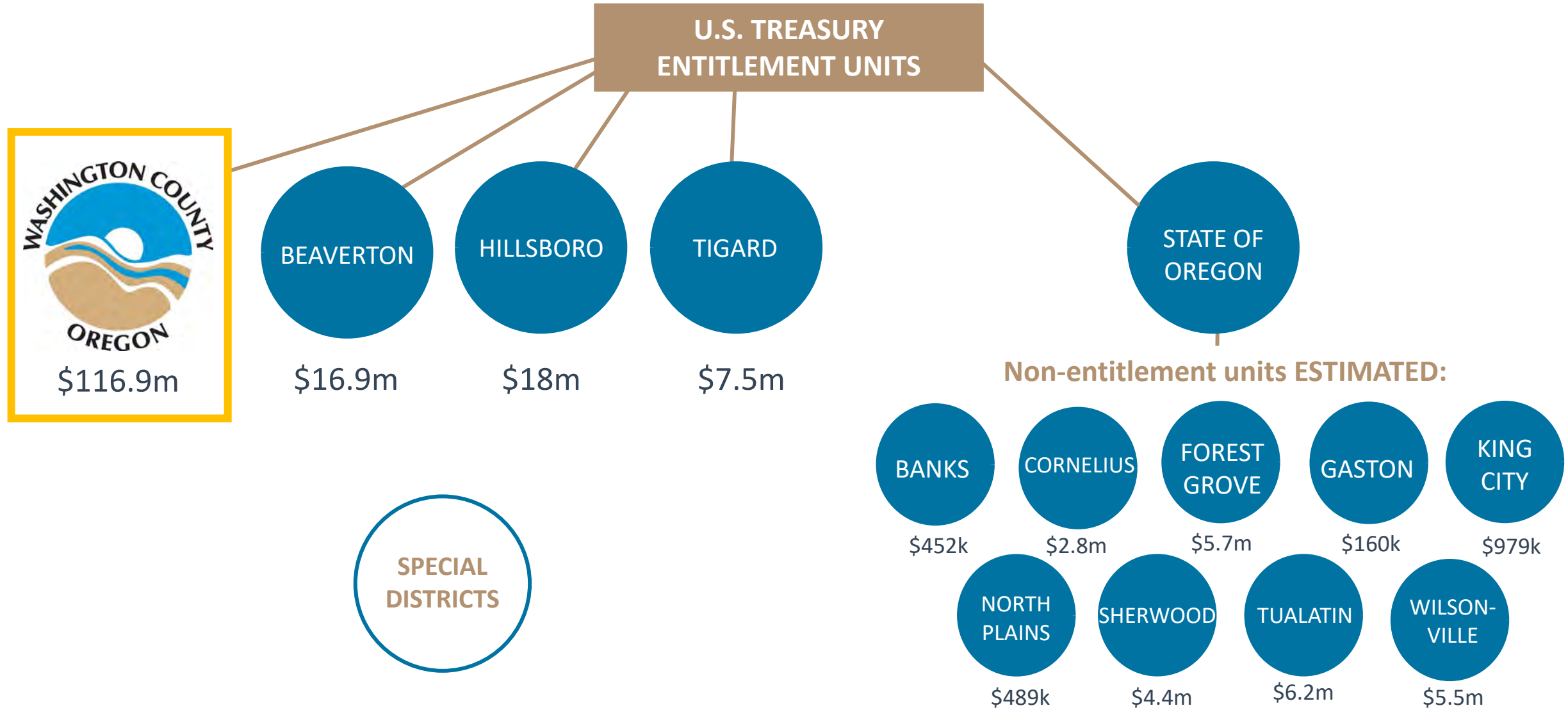
Washington County is still seeking clarity on what health funding may pass through the State of Oregon to counties for our ongoing pandemic response efforts.

ARPA funding areas:

- Substance abuse
- Mental health
- Behavioral health
- Child care and development
- SNAP expansion
- Vaccine distribution
- COVID-19 testing and tracing
- Health department and workforce support
- Emergency food and shelter support (separate from emergency rental assistance program)

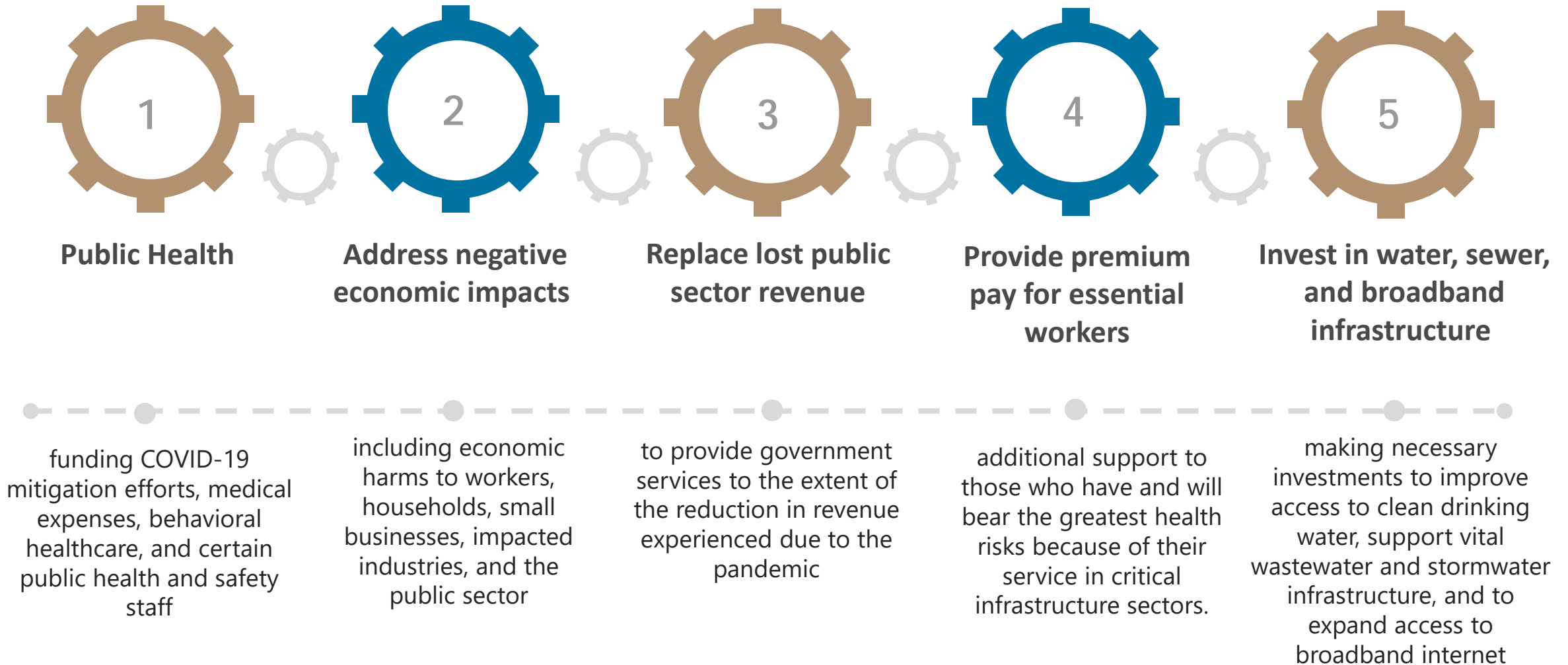
ARPA State and Local Fiscal Recovery Funds

Local Allocations

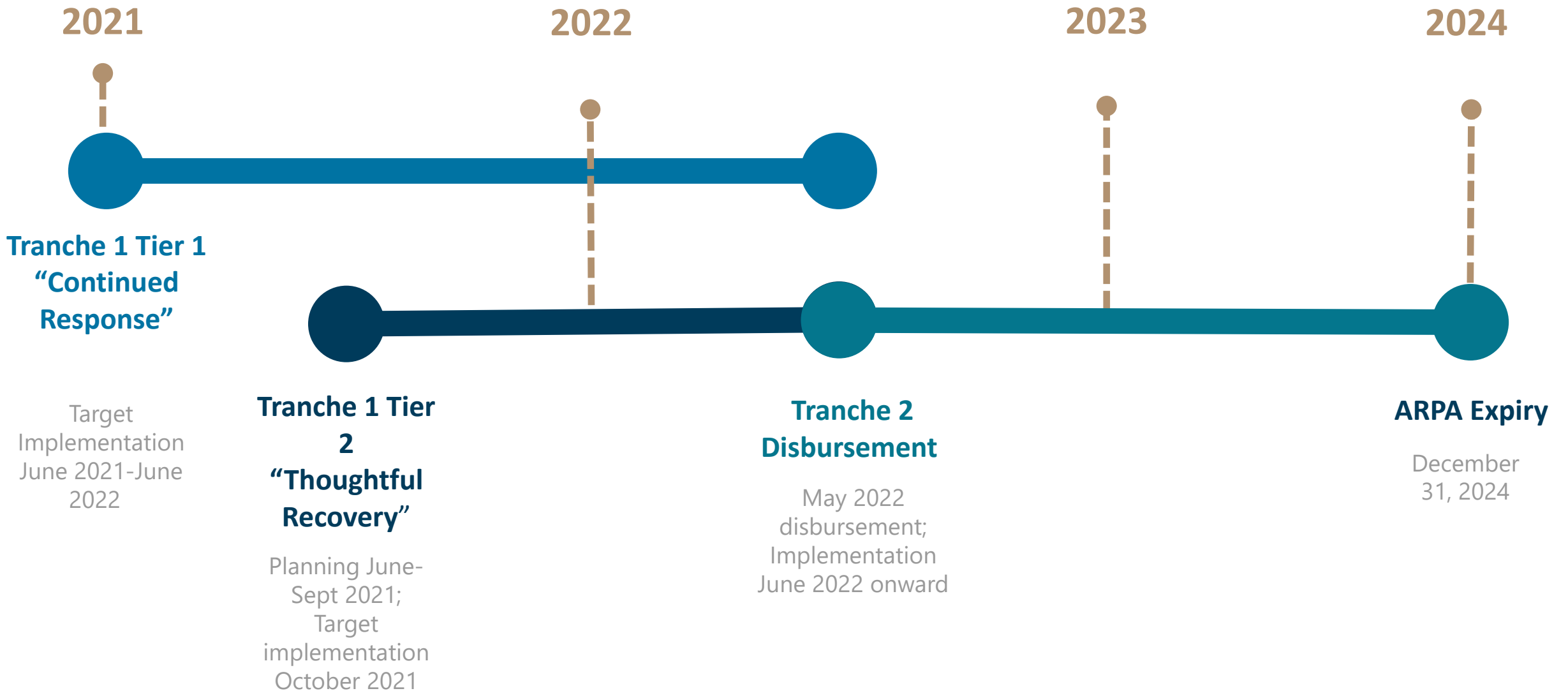


How can we use ARPA funds?

Allowable uses of ARPA funding for states, counties, cities, and other governments



Washington County ARPA Schedule At-A-Glance

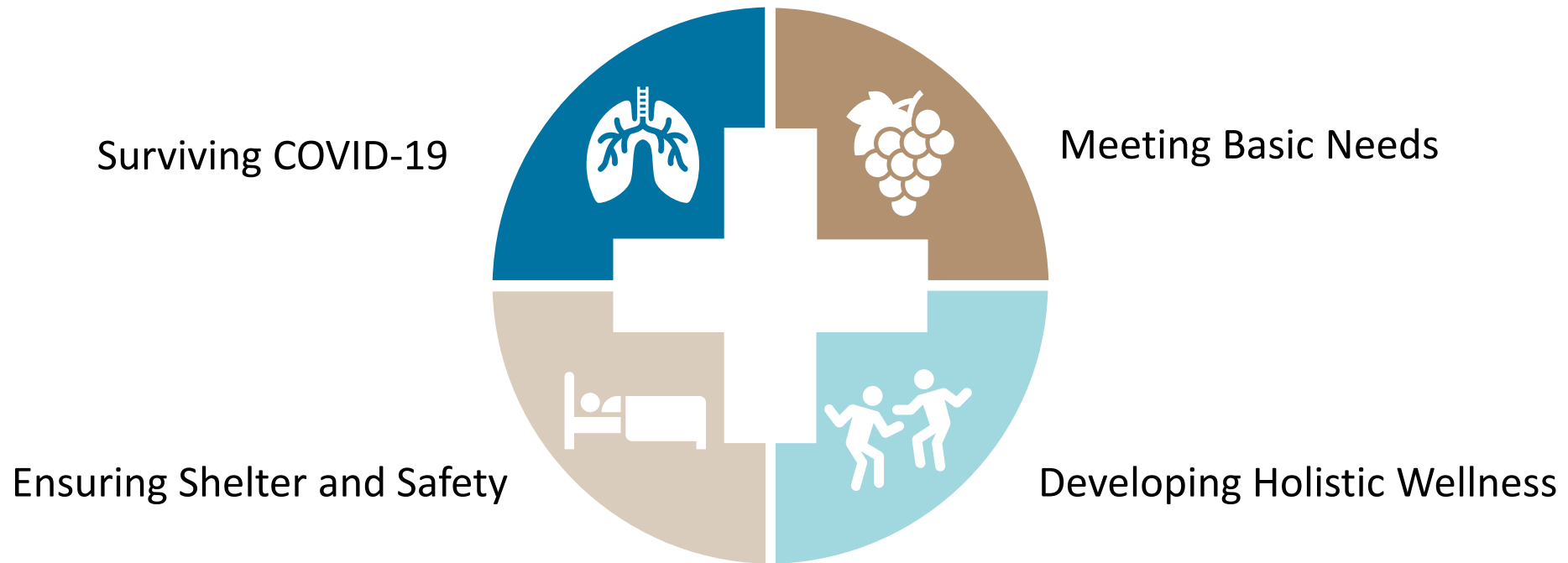


Washington County is Saving Lives

Our role is to protect public health *first*.

We are using ARPA dollars to invest in *people*.

We are already investing over *\$40M* for public health and community wellness in tranche one.



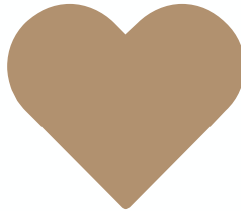
Learning to Live Amid COVID-19

Our “continued response” phase and “thoughtful recovery” phase are intertwined, rather than discrete.



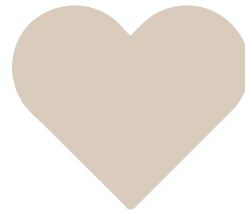
Protect Health First

The delta variant of the coronavirus further underscores our approach in protecting public health.



Promote Resilience

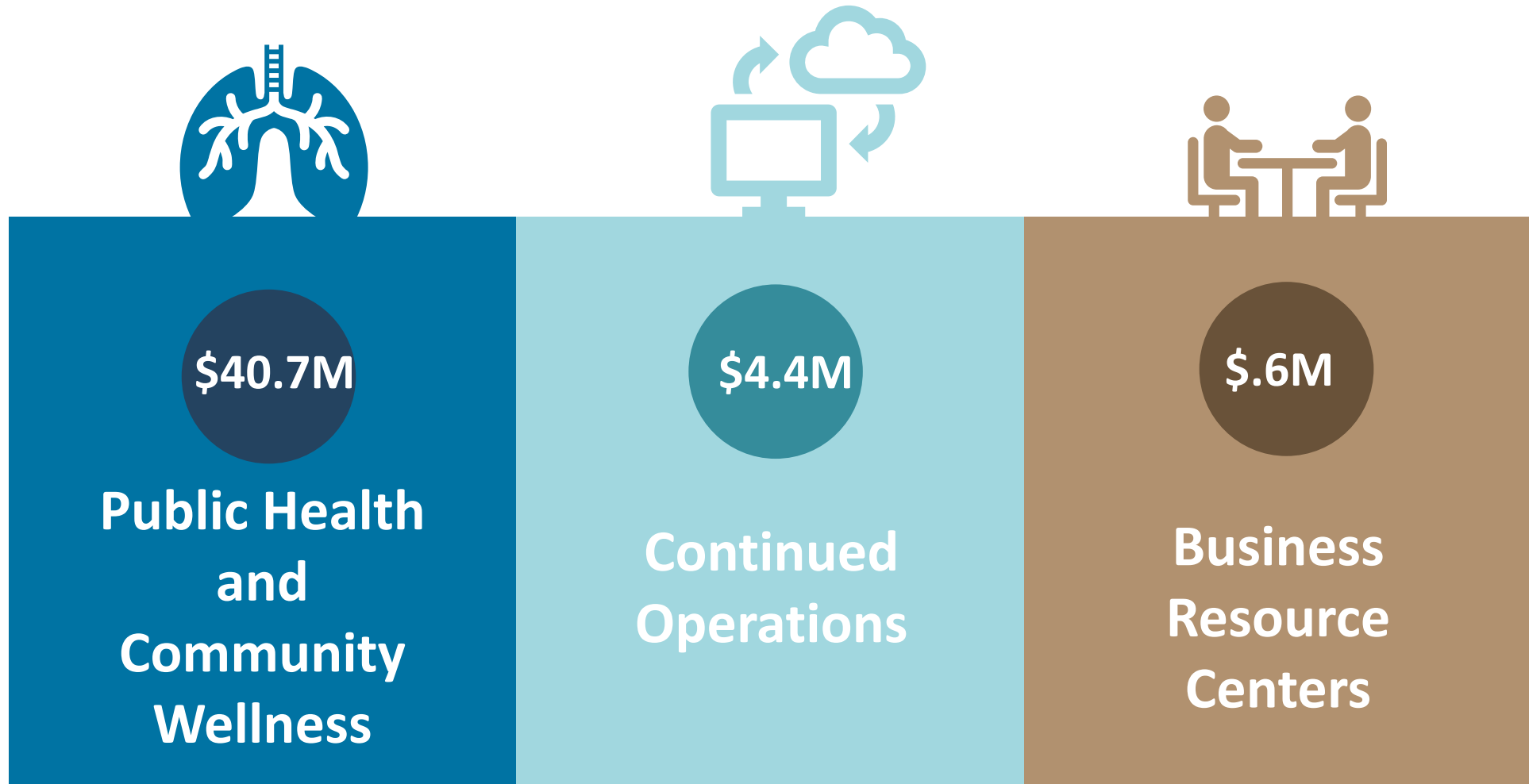
We continue to promote community resilience through reliable services despite uncertainty.



Stabilize and Support

We are holistically stabilizing our communities with public health and economic recovery investment

Current ARPA Spending: Continued Response



BUILDING ON A STRONG FOUNDATION

ARPA Tier 1 “Continued Response” areas grew directly out of lessons learned from the County’s pandemic response to date

- Relationships with 120+ community-based organizations
- Racial Equity Advisory Group collaborating on vaccination response
- A comprehensive community engagement plan will be forthcoming for ARPA Tier 2

Lift Us Up, Keep Us Going

Washington County’s Use of
Coronavirus Relief Funds 2020





SURVIVING COVID-19

The pandemic is not over; we are still investing in life-saving activities.

Budget:

- Isolation and quarantine support including contracts with community partners: **\$7,080,000**
- Community engagement and education: **\$2,625,000**
- Contracts: **\$17,000,000**
- Staffing: **\$8,795,000**

Equity Considerations:

- Support offered through culturally responsive partner organizations

*Gap remaining after other confirmed funding: **\$31,457,000***



MEETING BASIC NEEDS

The pandemic has exacerbated high-priority health challenges through new barriers to basic needs access. In turn, these challenges can compound COVID-19-related risks in our communities.

Budget:

- Meeting basic needs (food, diapers, and other products), including their distribution through multiple modes, and through culturally specific networks: **\$4,354,743**

Equity Considerations:

- Support for culturally specific foods and culturally specific information and assistance
- Support for migrant and seasonal farmworker communities

*Gap remaining after other confirmed funding: **\$2,471,000***



ENSURING SHELTER AND SAFETY

Facing housing insecurity and homelessness in a pandemic poses heightened risks, and pandemic-related economic factors have increased the number of individuals facing these risks.

Budget:

- Staffing, encampment outreach, sanitation, hygiene needs for homeless communities, and respite shelter costs: **\$1,956,533**

*Gap remaining after other confirmed funding: **\$1,467,000***



DEVELOPING HOLISTIC WELLNESS

The safety, availability, and capacity of health services for behavioral health, childcare, and family support services are facing severe challenges. A full recovery entails integrating the social, economic, and environmental factors that impact holistic wellness in our communities.

Budget:

- Behavioral health staffing, contracts with community partners, suicide and homelessness prevention: **\$1,842,113**
- Community health nurses (English/Spanish) for infant, child, and family support, including specialization for BIPOC prenatal and early childhood support: **\$1,070,000**
- Childcare development through an assessment of the current capacity, grant programs for new and existing providers, and the development of focused childcare networks for communities of color and non-English speakers: **\$2,840,000**

Equity Considerations:

- Development of 10 focused childcare networks for Spanish, Somali, Arabic, Vietnamese, and other language speakers
- Culturally responsive community nurses will mitigate the exacerbated health disparities for BIPOC families

*Gap remaining after other confirmed funding: **\$5,304,000***

QUESTIONS?

