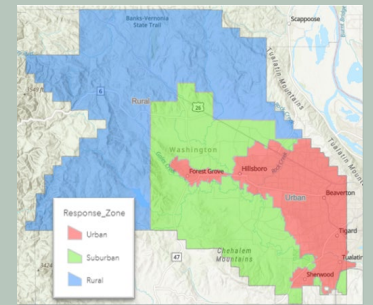




Washington County Emergency Ambulance Services Franchise Agreement Monthly Operational Compliance Report - May - July 2024

Monthly Performance Assessment is one mechanism of monitoring the EMS system for the County, and serves as a feedback tool for AMR. Compiled data from these reports represent AMR's performance for each metric listed.



Percent in compliance

Cardiac Arrest Performance

Results for clinical compliance will be calculated every other month. If the number of cases is not enough to reasonably apply calculations, WCEMS may extend the timeframe by one month on a case-by-case basis. ☒ ☒

Compression	<i>The average annotated rate of chest compressions on adult patients shall be within 100 to 120 per minute (target range), in at least 80% of cases.</i>	88.0
	<i>The average annotated compression fraction on an adult resuscitation case shall be at least 60% (target range), in at least 80% of cases.</i>	100.0
	<i>No single pause shall exceed 10 seconds per case (target range), in at least 80% of cases.</i>	20.0
Ventilation	<i>The annotated average rate of ventilation on adult patients shall be within 4-12 per minute (target range), in at least 80% of cases.</i>	76.0