



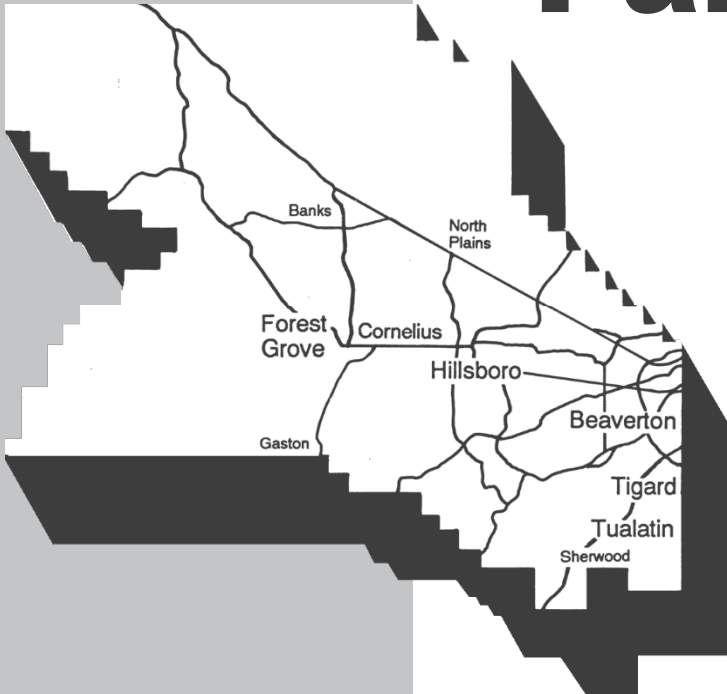
Elections Division
2925 NE Alcock Dr #170
Hillsboro, OR 97124-7523

www.washcovotes.org

B

Washington County Voters' Pamphlet

**SPECIAL
ELECTION
November 7, 2023**



Washington County Board of County Commissioners

Kathryn Harrington, Chair
Nafisa Fai, District 1
Pam Treece, District 2
Roy Rogers, District 3
Jerry Willey, District 4

ATTENTION

This is your county voters' pamphlet. Washington County Elections prints information as submitted. We do not correct spelling, punctuation, grammar, syntax, errors, or inaccurate information. This pamphlet contains information for several districts and there may be candidates/measures that are not included on your ballot. If you have any questions, call 503-846-5800.



Dear Voters,

Selected portions of this county voters' pamphlet are available in Arabic, Simplified Chinese, Korean, Russian, Spanish, and Vietnamese. These translations can be found online at oregonvotes.gov/WashingtonVP

تتوفر أجزاء مختارة من كتيبات الناخبين لهذه المقاطعة باللغة العربية يمكن العثور على هذه الكتيبات عبر الإنترنت على [.oregonvotes.gov/WashingtonVP](http://oregonvotes.gov/WashingtonVP)

本县选民手册的部分内容提供简体中文版本。可以访oregonvotes.gov/WashingtonVP获取译本。

주 유권자 팜플렛의 선택된 부분은 한국어 준비되어 있습니다. 번역은 온라인 oregonvotes.gov/WashingtonVP에서 찾아볼 수 있습니다.

Отдельные части брошюр избирателей этого округа доступны на русском языке. С данными переводами можно ознакомиться в Интернете по адресу: oregonvotes.gov/WashingtonVP

Algunas secciones de este folleto para votantes del condado están disponibles en español. Estas traducciones están disponibles en línea en oregonvotes.gov/WashingtonVP

Các phần được chọn trong tập thông tin cho cử tri quận này có bản ngôn ngữ tiếng Việt. Bản dịch có thể xem trực tuyến tại oregonvotes.gov/WashingtonVP

Department of Assessment & Taxation, Elections Division

2925 NE Aloclek Dr., Suite 170

Hillsboro OR 97124-7523

Phone: 503-846-5800 Fax: 503-846-5810

Email: elections@washingtoncountyor.gov Website: www.washcovotes.org

Gaston Rural Fire Protection District

Measure No. 34-326

Ballot Title

Renewal of 5-Year Local Option Levy for Capital and Operations

Question: Shall the District increase the Local Option Levy at the rate of \$1.01 per \$1,000 assessed value beginning in FY2024/2025? This measure may cause property taxes to increase by more than three percent.

Summary: This measure will replace the current Local Option Levy of \$0.67 and increase it by \$0.34 per \$1,000 assessed value beginning fiscal year 2024/2025. The proposed total Local Option Levy of \$1.01 per \$1,000 assessed value will support the annual cost of fire and emergency medical services and capital costs.

The District operates one station that responded to approximately 759 calls for service to the communities of Cherry Grove, Laurelwood, and the City of Gaston during 2022. The District began staffing the station 24/7 which has improved the response times.

The new levy would:

- Maintain a 24/7 staffing model at the fire station.
- Allow the District to sufficiently cover costs associated with the goal of maintaining adequate response times.
- Provide protective clothing, equipment, and training for volunteer membership.
- Acquire, upgrade, renovate, and improve apparatus and equipment.
- Upgrade technology equipment and software

The new Local Option Levy would raise approximately: \$468,097 in 2025-2026, \$482,140 in 2026-2027, \$496,605 in 2027-2028, \$511,503 in 2028-2029, and \$526,848 in 2029-2030

Explanatory Statement

The Gaston Fire District's permanent tax rate is \$1.0921 per \$1,000 of assessed value. This rate was set by the Oregon Department of Revenue as a result of Measure 50 in 1998. This rate was insufficient to meet the rising costs, in November 2004, voters approved a five-year local option levy (LOL) of \$0.42 per \$1,000 of assessed value to allow for the District to meet its operational expenses and to allocate reserve funds. In November of 2008, voters approved a renewal of the LOL at \$0.67 per \$1,000. The District has operated with this level of funding without asking the community for an increase for the past 16 years.

The District Board of Directors has prioritized 24/7 staffing to provide an immediate response to emergency calls and recognized that the cost of providing emergency response to a growing community is outpacing the income generated from the permanent rate and the LOL. Therefore, they are asking voters to replace the LOL with an increase of \$0.37 per \$1,000. This would provide the District with a LOL of \$1.01 per \$1,000.

If approved, the LOL would generate the revenue necessary to maintain staffing levels that meet the demands for service, provide for costs associated with a nearly 48% increase in 911 calls over the past 5 years, outfit our volunteer firefighters with up-to-date protective clothing, support the implementation of required technology, and grow the apparatus replacement fund so that the district can purchase a fire engine to replace aging apparatus.

Who does Gaston Fire District serve?

Gaston Fire District provides 911 emergency fire, rescue, and medical services to the communities of Laurelwood, Cherry

Grove, and the City of Gaston. Their response area is 55 square miles and is in both Washington and Yamhill counties.

How many firefighters does Gaston Fire District have?

Gaston Fire District has three career firefighters and about 25 volunteer firefighters. The station is staffed 24/7 by a career firefighter and a resident volunteer. Volunteers will respond to the station from home and respond as additional resources are needed.

What has the district done to provide a quick response to emergency calls for help?

In June of 2022, the district moved its staffing from daytime staffing to 24/7 staffing. There is a career firefighter and a resident volunteer on duty 24 hours a day. This allows for a crew of at least two firefighters to respond from the station moments after the call for help comes in. Prior to this change, the average response time was over 10 minutes. With the 24/7 staffing, the average response time decreased by more than 8 minutes with an average response time of less than 2 minutes.

What has changed to require the additional funds?

To meet the call volume the District has increased the volunteer ranks from 8 to about 25, technology is constantly changing with associated expenses not experienced in the past, and an aging fire engine needs to be replaced in the next 5 years.

Submitted by:

Michael Pedemonte
GRFPD Board of Directors, President

No Arguments in Opposition of this measure were filed.

Gaston Rural Fire Protection District

Measure No. 34-326 Arguments

Argument in Favor

As a community member, I have been a part of the Gaston and Cherry Grove all my life. I enjoy our rural town.

In September 2020, a significant fire event threatened our family. The Power Line fire started on a neighboring property and was one of several significant fires that restricted access to resources locally. Gaston Fire District was the initial response to this fire, and it was amazing watching our communities come together to deal with this event. These fires threatened our way of life, and I was grateful for the response from the district and the resources that they were able to bring in to help fight fires.

After the fire I wanted to find out what I could do to prepare for future fires and emergencies. Before long I became a volunteer firefighter and went through the extensive training required of all volunteers. I did not realize how much our Gaston Firefighters had to learn. They are prepared to handle medical emergencies, car wrecks, hazardous materials accidents, animal rescues, wildland fires, house fires, water rescues, and technical rescues. If it's not a police problem and you call 911, Gaston Firefighters most likely will be called to help you.

When I became a firefighter, the department had career firefighters on duty during the daytime with a volunteer workforce of 8 volunteers who would respond to the station to handle calls after hours. I was surprised to learn that in the evenings and nights, it could be 10 to 15 minutes before a fire engine would leave the station and those times that no volunteers were available, we had to rely on neighboring departments to respond to our emergencies.

Please join me in supporting Measure 34-326 to support our fire department as they continue to meet the increased call volume and expenses associated with meeting the demands of a growing community and the ongoing threat of wildfires around us.

This information furnished by:
Rachel Tarnowski

Argument in Favor

GASTON VOLUNTEER FIREFIGHTERS SUPPORT THE LEVY RENEWAL

Volunteers are critical to every community, and our volunteer firefighters are critical to the Gaston community. Over 20 of us spend hundreds of hours every year working to keep our community safe.

When our pagers go off we respond to your call for service, but like many in our community most of us work outside of the community, which means we need a good balance of career and volunteer firefighters to help protect our homes and families. Passing this Option Levy, does just that by ensuring that our career personnel can continue to staff the fire station 24x7 and our volunteers can supplement the response. This keeps our response times low, ensuring that you quickly receive the help you need, when you need it.

This Levy will also provide funding for future replacement of some of our aging equipment that we use to respond to your fire and medical emergencies.

That is why we are supporting Gaston Fire Department's replacement levy. Please join us by voting yes on Measure 34-326

Gaston Volunteer Firefighters Association

Lorne Vaught, President

This information furnished by:
Lorne Vaught
Gaston Volunteer Firefighter's Association

Argument in Favor

Gaston Rural Fire Board Supports Measure 34-326

As the voter-elected Board of Directors for Gaston Rural Fire Protection District, we are asking you to vote YES on Measure 34-326

For the past 16 years, the Gaston community has generously supported our local fire department with a levy of \$0.67 per \$1,000 of assessed value to meet the operational expenses and to allocate reserve funds. In return, the fire district has provided the community with an excellent level of service for fire and health emergencies, traffic accidents, smoke investigations, lift assistance, property inspections for fire mitigation, and assorted other responses. Please consider the following...

- Gaston's call volume has increased 48% in the last five years. The district responded 510 times in 2017 and responded to 759 calls in 2022.
- Response times have come down dramatically in the last year as we have moved to a 24/7 staffing model. Before the change we had an average 10-minute response time, we now have an average response time of less than 2 minutes.
- We maintain a staff of about 25 volunteers, 3 career firefighters, and a part-time chief. We also have added 6 resident volunteer positions to bolster our response times.
- Equipment and personnel costs have increased significantly. We need to replace fire engines and other essential equipment in the next 5 years and build reserves for future equipment needs.

We are asking you to support an increase of \$0.34 per \$1,000 of assessed value to continue providing excellent service and plan for future needs while protecting our firefighters.

Please join in supporting Measure 34-326. VOTE YES

Michael Pedemonte, Chair

This information furnished by:
Michael Pedemonte



Washington County Official Ballot Drop Boxes

Return your voted ballot to an official ballot drop box by 8:00 p.m. on Election Day. No postage is required.

All of the official drop boxes listed below are open 24 hours a day until the 8:00 p.m. deadline on Election Day.

CORNELIUS:

Cornelius City Hall
1355 N. Barlow St
Cornelius, OR 97113

FOREST GROVE:

Forest Grove City Library
Pacific Ave & Birch St
Forest Grove, OR 97116

HILLSBORO:

Washington County Elections
2925 NE Aloclek Dr, Ste 170
Hillsboro, OR 97124

TUALATIN:

Tualatin City Hall
18880 SW Martinazzi Ave
Tualatin, OR 97062

Scan this QR code to see these drop box locations on a map:



You may drop off your ballot at any official ballot drop box or elections office in the State of Oregon.

Voter Registration Information

The logo features a large, bold checkmark to the left of the word "Voter". Below "Voter" are the words "Registration" and "Information" stacked vertically.

Registering to vote

You are qualified to register to vote in Oregon if you can answer yes to the following questions:

- ✓ Are you a resident of Oregon?
- ✓ Are you a US citizen?
- ✓ Are you at least 16 years of age?

If you are 16 years of age, you will not receive a ballot until an election occurs on or after your 18th birthday.

How to register

Register to vote online at **oregonvotes.gov** or pick up a voter registration card at any of the following places:

- Any County Elections Office
- The Secretary of State's Office
- Some state agencies such as the Division of Motor Vehicles
- A voter registration drive
- Some locations of the US Postal Service
- Libraries

After completing your registration card, mail or bring it to our office in person.

The deadline for new registrations and party changes is 21 days prior to Election Day.

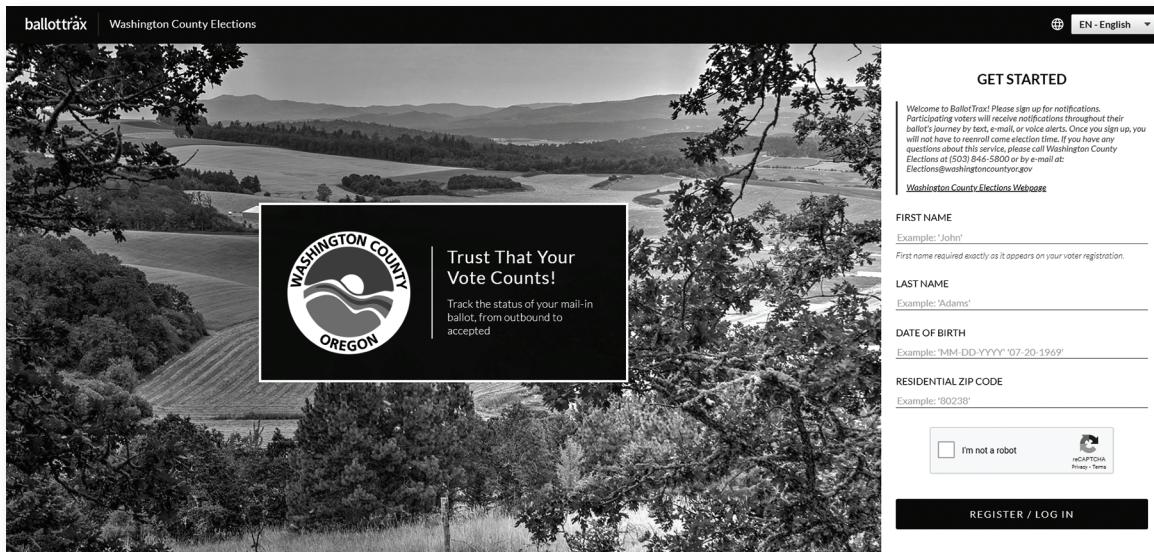
What information is required to register?

To complete your registration, you must provide the following:

- Full legal name
- Home address
- Mailing address (if applicable)
- Date of birth
- Signature
- Oregon Driver's License number, Identification Card number, or a Social Security number

Track Your Ballot!

Sign up to receive updates and notifications about your ballot from Washington County Elections. Receive text, email, or voice alerts when we have mailed your ballot, when your ballot has been received at the Elections office, and when your ballot has been accepted and counted.



Sign up at
washcovotes.ballottrax.net/voter
or scan this QR code

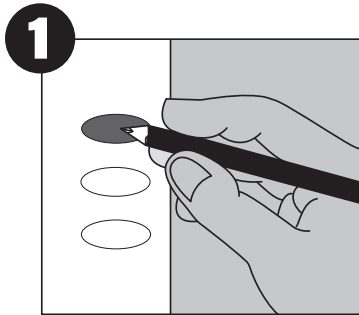


The Washington County ballot tracking program is a partnership with i3ballot.
If you have any questions about this service, please call
Washington County Elections at **(503) 846-5800** or email us at
elections@washingtoncountyor.gov

**Sign up today to begin receiving
notifications on your ballot!**

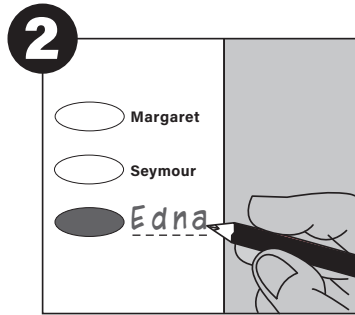
Complete your ballot

Carefully read and follow all instructions printed on your ballot.



To vote, completely fill in the oval next to your choice.

You do not have to vote on all contests. Those you do vote on will still count.



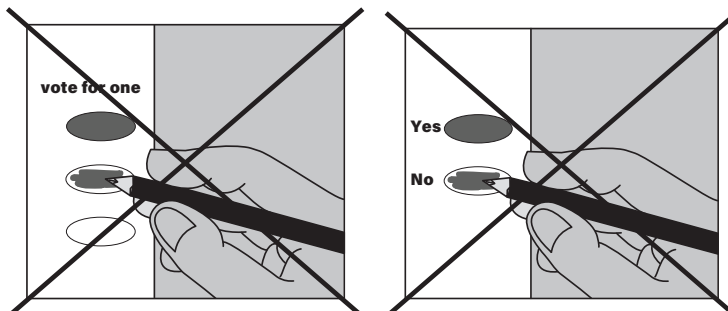
To write-in a candidate:

→ Clearly print their name on the blank line provided on the ballot

-and-

→ Fill in the oval next to the name you wrote-in

Check for errors



If you vote for more than one option, your vote **will not count** for that candidate or measure.



Check your ballot carefully

You can not change your vote after you have returned your ballot.

Contact Washington County Elections at **(503) 846-5800** or **elections@washingtoncountyor.gov** to request a replacement ballot if:

→ you make a mistake

→ you lose your ballot

→ your ballot is damaged or spoiled

→ or for any other reason.

It's against the law to:

- ✗ sign another person's ballot return envelope for them
- ✗ vote more than once in an election or cast a fraudulent ballot
- ✗ vote a ballot if you are not legally qualified to do so
- ✗ coerce, pressure or otherwise unduly influence another voter
- ✗ sell, offer to sell, purchase or offer to purchase another voter's ballot
- ✗ obstruct an entrance of a building in which a voting booth or official ballot dropsite is located
- ✗ deface, remove, alter or destroy another voter's ballot, a posted election notice or election equipment or supplies
- ✗ attempt to collect voted ballots within 100 feet of an official ballot dropsite
- ✗ establish a dropsite without displaying a sign stating "Not An Official Ballot Dropsite"

Any violations of the identified election laws are subject to penalties ranging from Civil Penalties (Up to \$250 per violation), Class A Misdemeanors or Class C Felonies.

For more information about voting in Oregon or if you think your rights as a voter have been violated:

oregonvotes.gov

1 866 673 VOTE / 1 866 673 8683

se habla español

1 800 735 2900

for the hearing impaired