



## **Washington County Developmental Disabilities**

*If you need help with any of the documents  
in this packet, please let us know.  
We can help!*

*Call us 503-846-4737*

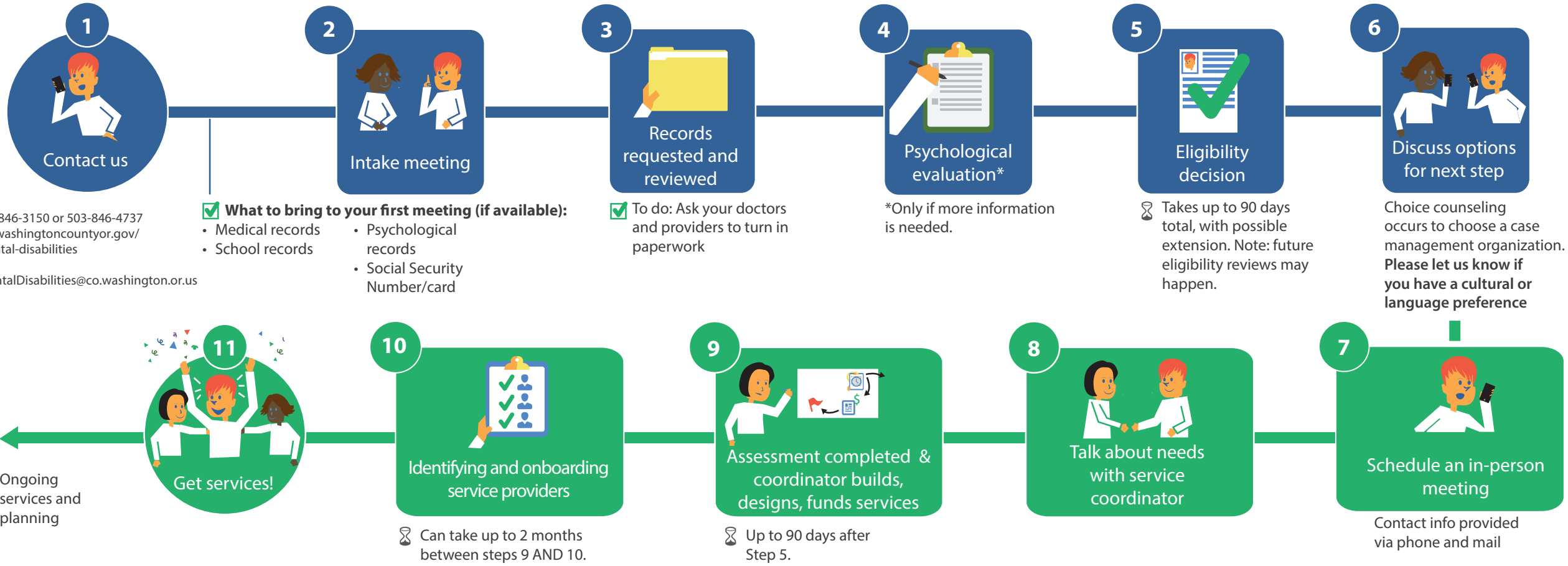
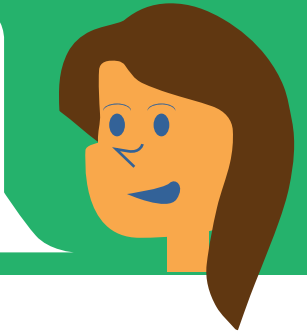
*Si necesita ayuda para llenar cualquiera de  
los documentos en esta aplicación, por  
favor, déjenoslo saber. Nosotros podemos  
ayudarle.*

*Llámenos al 503-846-4737*

# The Path to Intellectual & Developmental Disability Services

"In this moment when you are just... trying to survive it may not seem like the time and paperwork investment up front is worth it. But I would encourage you to press on because on the other side it is...life-giving."

- Jillana, parent of child receiving IDD services



**Ongoing Medicaid is Required for Services:** Having Medicaid before step 6 speeds up the process by 2-3 months. If you don't have Medicaid ask about how you can enroll.

We're here to help every step along the way. Here's who to contact at Washington County with questions:

Name \_\_\_\_\_

Phone number \_\_\_\_\_



**DEVELOPMENTAL DISABILITIES DEFINED**

<p><b>Intellectual Disability</b> Established by Law ORS 427</p>	<p><b>Other Developmental Disabilities</b> Established by federal definition State of Oregon develops guide- lines for interpretation.</p>
<p>1. History of an intellectual disability must be in place by the 18<sup>th</sup> birthdate</p> <p>2. IQ of 75 is cap for clearly defining intellectual disability</p> <p>3. IQ 66-75 <i>may be</i> eligible as a person with an intellectual disability <b>if</b> there is a significant impairment in adaptive behavior that is <i>directly</i> related to the intellectual disability.</p> <p>4. The adaptive behavior <b>cannot</b> be <i>primarily</i> attributed to other conditions, including but not limited to mental or emotional disorders, sensory impairments, motor impairments, substance abuse, personality disorder, learning disability, or ADHD</p> <p>5. The condition must be expected to last indefinitely.</p>	<p>1. History of the other developmental disability must be in place by the 22<sup>nd</sup> birthdate.</p> <p>2. IQ scores are not used in verifying the presence of non-intellectual disability developmental disability.</p> <p>3. There must be either a <i>medical or clinical diagnosis</i> of the neurological disability <b>and</b> significant impairments in adaptive behavior that are <i>directly</i> related to the other developmental disability.</p> <p>4. The neurological condition must originate and directly affect the brain</p> <p>5. The significant impairments in adaptive behavior <i>cannot</i> be primarily attributed to other conditions, including but not limited to mental or emotional disorders, sensory impairments, motor impairments, substance abuse, personality disorder, learning disability, or ADHD.</p> <p>6. There must be training and support needs that are similar to an individual with an intellectual disability.</p>
<p><u>Most frequent other developmental disabilities:</u> Cerebral palsy, down syndrome, Prader Willi, autism spectrum disorders, fragile X syndrome, fetal neurological disorders (alcohol, lead, drugs, disease), Klinefelter, traumatic/acquired brain injuries</p>	

# Washington County Developmental Disability Division

5240 NE Elam Young Pkwy. Ste. 150  
Hillsboro, OR 97124



**Hawthorne Farm MAX Station  
Service at Stop ID 9839. Blue Line**



“For afterhours document drop off, use the white drop box closest to our office door.”