

Steering Committee

January 19, 2023



**Center for Addictions
Triage and Treatment**
Washington County



WASHINGTON COUNTY
OREGON

Department of Health and Human Services

Meeting Overview

- Welcome and introductions
- Updates
- CATT health services
- Next steps



**Center for Addictions
Triage and Treatment**
Washington County



Update: Architectural Design

Evergreen/Intensive Services Building (ISB)

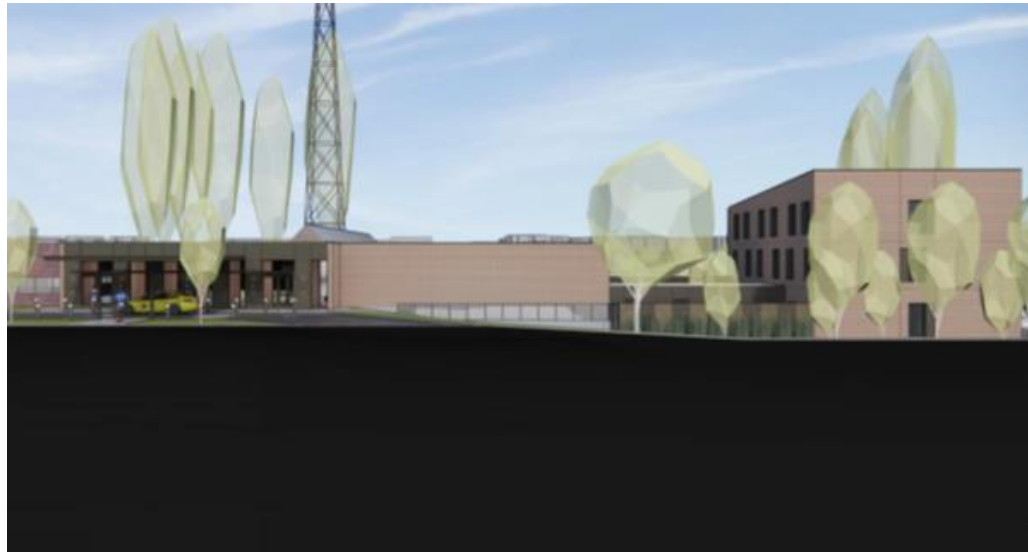
- Will hold sobering, detox, residential treatment and transitional supports
- Existing building will be expanded from 24,000 sq ft to 42,000
- Addition to be built next to existing structure

Update: Architectural Design

Evergreen Building (currently)



With New Addition





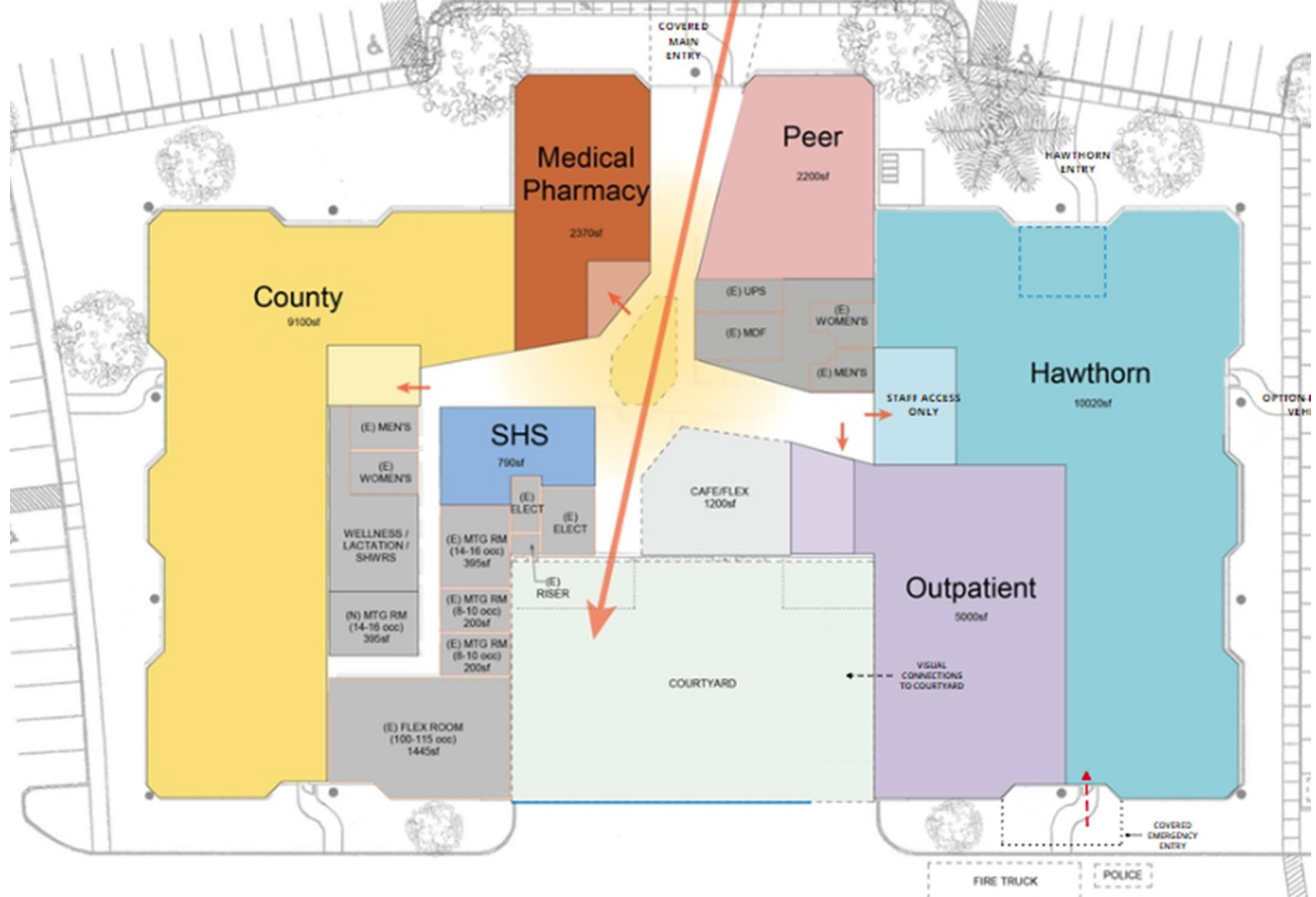
Update: Architectural Design

Elam Young/Community
Services Building (current)



Community Services Building
new entrance





Elam Young Interior



Medical and
Pharmacy

Peer
Services

Outpatient
Services

Wash. County &
Conference Rooms

Hawthorn Entrance and Plaza



Pause for Questions



Update: Outpatient Services

- Request for Letters of Interest published in November
- Priority criteria for culturally specific organizations/services
- Four organizations submitted letters of interest
- **Solutions Group NW** selected



Update: Funding

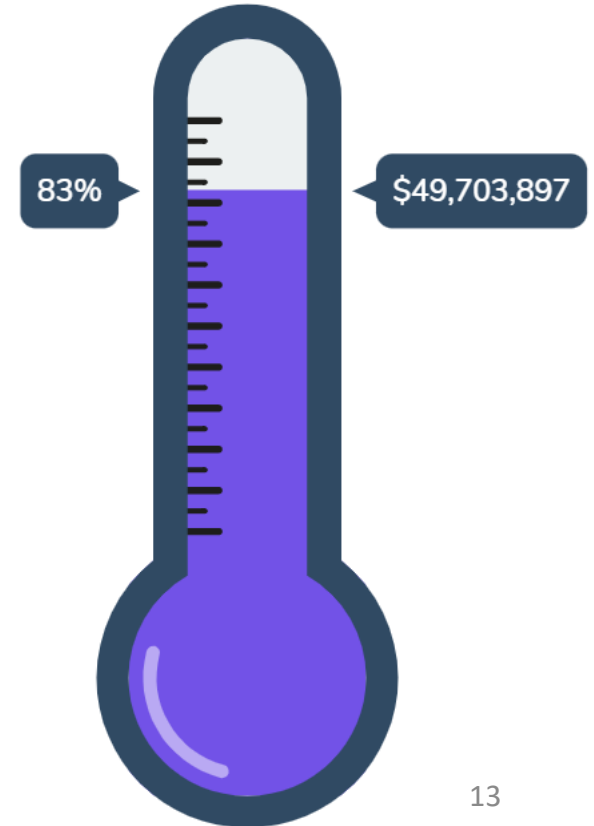
- Original estimate in feasibility study (May 2021): \$62-72M
- Revised estimate after preliminary space planning (January 2022): \$41.5M
- Current estimate following schematic design (December 2022): \$62M

Target Budget: \$60,000,000

Funding: Resources

Fund	Budget Amount
Measure 110	\$ 5,129,277
Residential Grant	\$ 2,300,000
Providence Grant	\$ 500,000
CareOregon/HSO Grant	\$ 7,600,000
BH Reserves General	\$ 17,830,282
Hawthorn Reserves	\$ 7,567,565
Opioid Settlement	\$ 8,776,773
Marijuana Tax	\$ 500,000
Total	\$ 49,703,897
GAP	\$ 10,296,103

GOAL: \$60,000,000



Funding: Opportunities

- Measure 110 extension (\$3M)
- Federal earmark request (\$2M?)
- Legislative funding request (?)
- Additional fundraising (?)
- Financing



Update: Community Engagement Planning

- The ISB planning process requires a community meeting
- Will present to NAC in March
- Plan to hold an open house in April
- Open house stations will include:
 - Meet the provider
 - See the design
 - Meet with public safety personnel



Pause for Questions



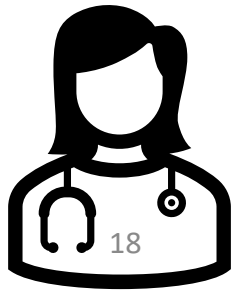
CATT Health Services

- The Program Development Work Group prioritized incorporating health services at the CATT
- Type of service not yet determined
- Information gathered from:
 - OHSU
 - Virginia Garcia
 - Hawthorn Walk-In Center
 - CODA
 - Central City Concern
 - WC Public Health
 - WC Supported Housing
 - Lifeworks NW

CATT Health Services

Considerations:

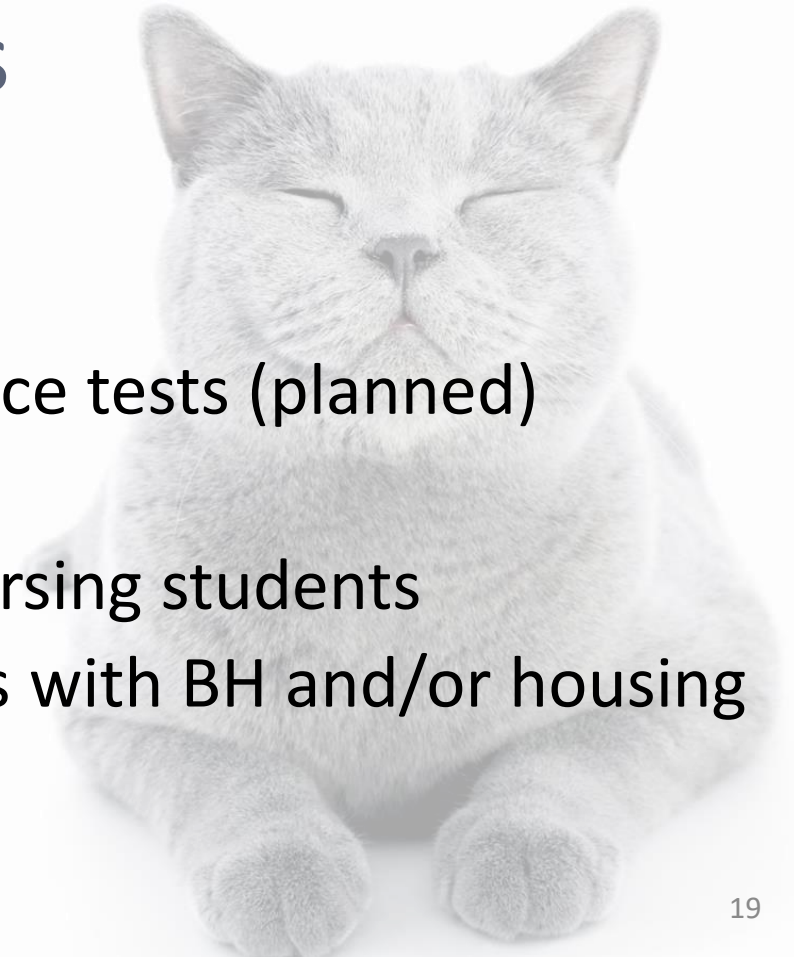
- Most people served at CATT will have primary care assigned, but may not be accessing it
- Scheduled appointments can be a barrier to care
- Many of the people served at CATT will also be involved in the shelter system
- Funding will be a challenge



CATT Health Services

Service options identified:

- Pharmacy (planned)
- Lab space for point of service tests (planned)
- Immediate care services
- Wound care clinics with nursing students
- Primary care for individuals with BH and/or housing instability



CATT Health Services

Opportunities?

- Care-coordination approach such as the I-CAN program at OHSU
- Use advanced practice nursing students to offer occasional specialty care clinics
- No-appointment immediate care service that is focused on CATT and shelter clients

Virginia Garcia and Central City Concern both interested in some sort of partnership with the CATT.

Discussion

- Are we considering the right things?
- Are there other opportunities to partner that we should consider?



Meeting Wrap Up



- Next meeting is March 16, 3-4 pm
- Are there topics you would like us to cover in the next meeting?